

BURBANK TO LOS ANGELES PROJECT SECTION

ENVIRONMENTAL PROCESS



ENVIRONMENTAL COMPLIANCE

CALIFORNIA HIGH-SPEED RAIL

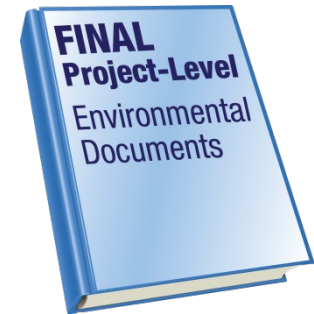
State Compliance

- California Environmental Quality Act (CEQA)
- Environmental Impact Report (EIR) document

Federal Compliance

- National Environmental Policy Act (NEPA)
- Environmental Impact Statement (EIS) document

Draft & Final Project-Level Environmental Documents

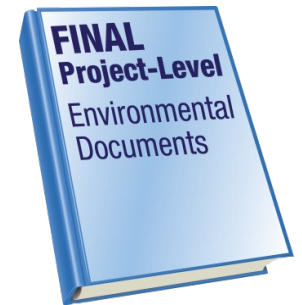


BURBANK TO LOS ANGELES ENVIRONMENTAL

CALIFORNIA HIGH-SPEED RAIL

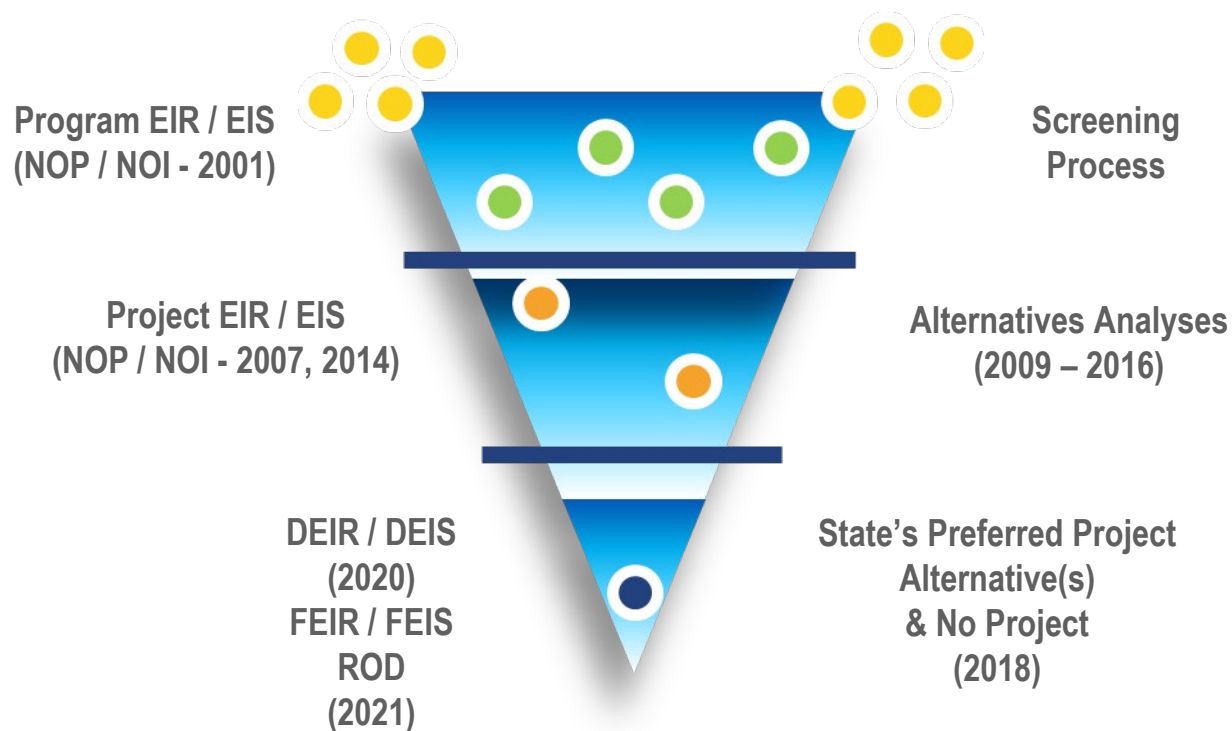
Environmental Documents Analyze These Topics

- Aesthetics & Visual Quality
- Air Quality & Global Climate Change
- Biological Resources & Wetlands
- Capital & Operating Costs
- Cultural Resources
- Cumulative Impacts
- Electromagnetic Interference/Fields (EMI/EMF)
- Environmental Justice
- Geology, Soils, Seismicity & Paleontology
- Hazardous Materials & Wastes
- Hydrology & Water Resources
- Noise & Vibration
- Parks, Recreation & Open Space
- Public Utilities & Energy
- Regional Growth
- Safety & Security
- Station Planning, Land Use & Development
- Section 4(f) & Section 6(f) Evaluations
- Socioeconomics & Communities
- Train Operations
- Transportation



RANGE OF ALTERNATIVES FROM TIERING PERSPECTIVE

CALIFORNIA HIGH-SPEED RAIL



2005 STATEWIDE PROGRAM EIR/EIS

CALIFORNIA HIGH-SPEED RAIL

Considered & Eliminated Several Corridors

- LAX vs LA Union Station Terminus Evaluation
- I-5 Corridor
- Metro-Metrolink Corridor
- Combined I-5/Metro-Metrolink Corridor

ADVANCED: Alignment Alternative

- Metro-Metrolink Corridor

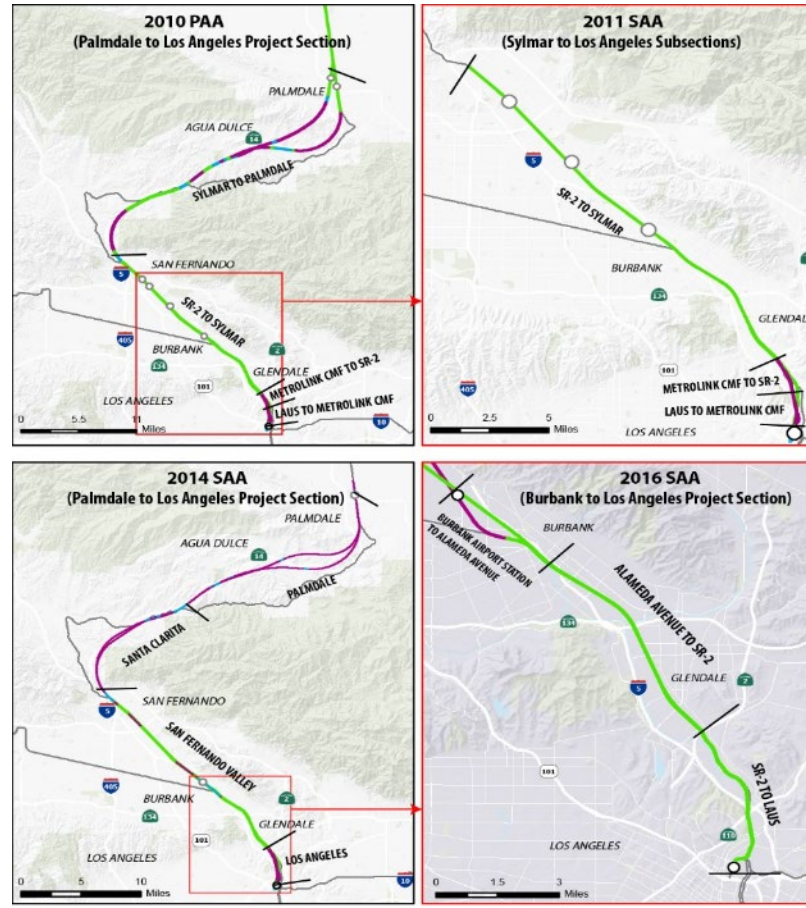
ADVANCED: Station Options

- Burbank Airport Station (Sun Valley & Downtown Burbank)
- LA Union Station (3 Options)



ALTERNATIVES ANALYSIS 2010-2016

CALIFORNIA HIGH-SPEED RAIL

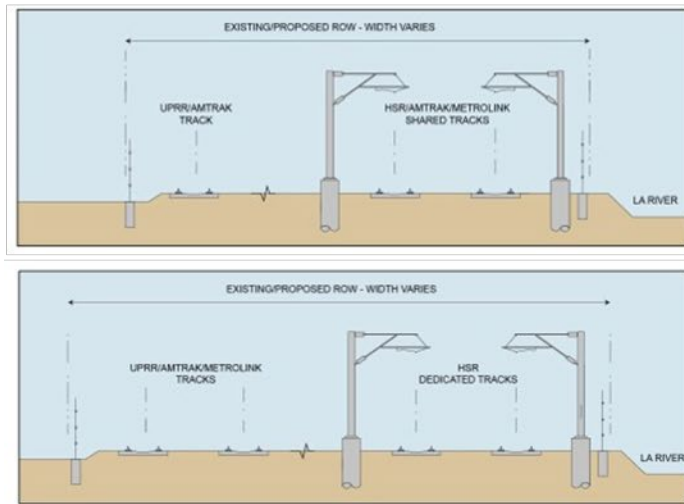


2016 SUPPLEMENTAL ALTERNATIVES ANALYSIS

CALIFORNIA HIGH-SPEED RAIL

ADVANCED

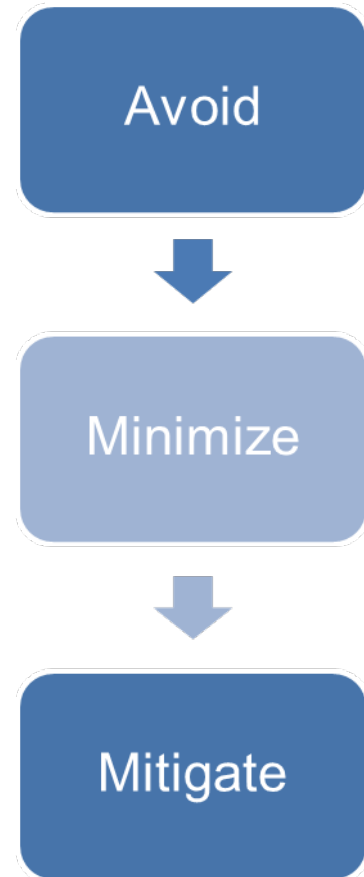
- Surface (Reduced Speeds) with 2 Operational Options (Shared & Operations)
- LAPT1 (Tunnel)
- LAPT3 (Tunnel)



Avoid, Minimize & Mitigate Potential Environmental Impacts

Authority strives to:

- **Avoid** adverse impacts
- **Minimize** impacts, when they cannot be avoided
- **Mitigate** impacts, when they cannot be avoided or minimized



KEY AVOIDANCE & MINIMIZATION ACCOMPLISHMENTS

CALIFORNIA HIGH-SPEED RAIL

- **Lockheed/West Burbank Channels** – Refined engineering to minimize permanent impacts to Section 404/408 resources
- **Grade Separations Refinements** – Reduced grade separation footprints in Glendale and Atwater Village which are in close proximity to each other and to sensitive areas
- **Historic Glendale Metrolink Station** – Refined HSR alignment design to avoid direct impacts to existing historic station
- **Eliminate Flyover Structure** – Refined operations model to eliminate flyover rail structure and avoid significant right-of-way takes
- **Taylor Yard/G2 parcel** – Refined alignment design to avoid directly impacting proposed park
- **LA River Railroad Crossings** – Designed alignment that shares existing railroad bridges in order to avoid directly impacting LA River
- **Main Street** – Refined design to avoid impacting known resources



STATE'S PREFERRED ALTERNATIVE

CALIFORNIA HIGH-SPEED RAIL

- One alignment alternative (Build Alternative) will be evaluated in the Draft EIR/EIS, along with the No Project Alternative
- Federal NEPA processes encourage federal and state agencies to identify a Preferred Alternative *before* the release of the Draft Environmental Documents
- The Authority's Board of Directors identified the State's Preferred Alternative in November 2018
- Staff recommended that the Build Alternative be identified as the State's Preferred Alternative because it best achieves the goals in the Purpose and Need



“...provide the public with electric-powered HSR service that offers predictable and consistent travel times between major urban centers...”

-HSR EIR/EIS Purpose and Need



STATE'S PREFERRED ALTERNATIVE

CALIFORNIA HIGH-SPEED RAIL

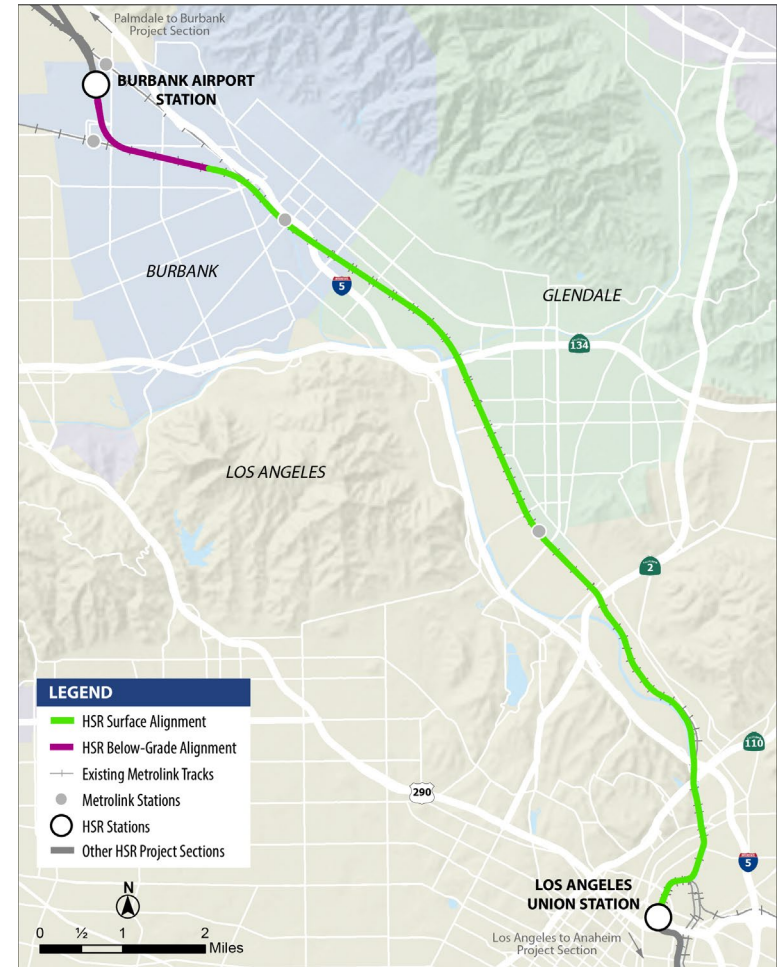
Approximately 14 miles

Two Stations

- Burbank Airport Station below-ground
- Los Angeles Union Station at-grade

Alignment Features

- Below-ground portion outside rail corridor near Hollywood Burbank Airport
- At-grade throughout remainder of corridor
- Shared corridor with Metrolink, Amtrak, and UPRR
- Shift existing tracks to north/east for freight movement
- Add two new electrified tracks on south/west to share with passenger rail
- 6 new grade separations (3 elevated)*
- Upgraded corridor protection via fencing
- One new bridge over LA River at Main Street



* Some grade separations could be completed prior to HSR operations as independent early investment projects.



BURBANK TO LOS ANGELES STAKEHOLDER ENGAGEMENT

CALIFORNIA HIGH-SPEED RAIL

Community Open House & SWG Series

- Fall 2015, Winter 2016, Spring 2017 & Summer 2018
- 800+ community members attended
- Interpreter services for up to 8 languages
- Bilingual and webcast meetings
- Social media presence & information sharing (Facebook, Twitter ads in English & Spanish)



Stakeholder Working Group

- 400+ organizations invited

Ongoing Community Activities

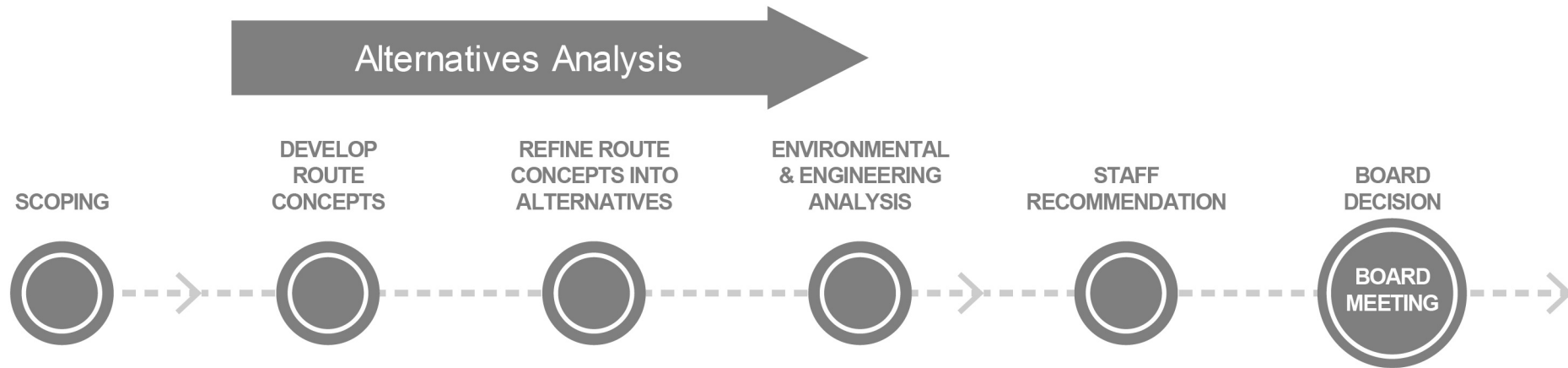
- 120+ meetings with key stakeholders and community organizations
- 60+ information booths at various community events
- Multi-faceted, bilingual approach focused on reaching all communities
- 24/7 public online commenting



BURBANK TO LOS ANGELES ENVIRONMENTAL

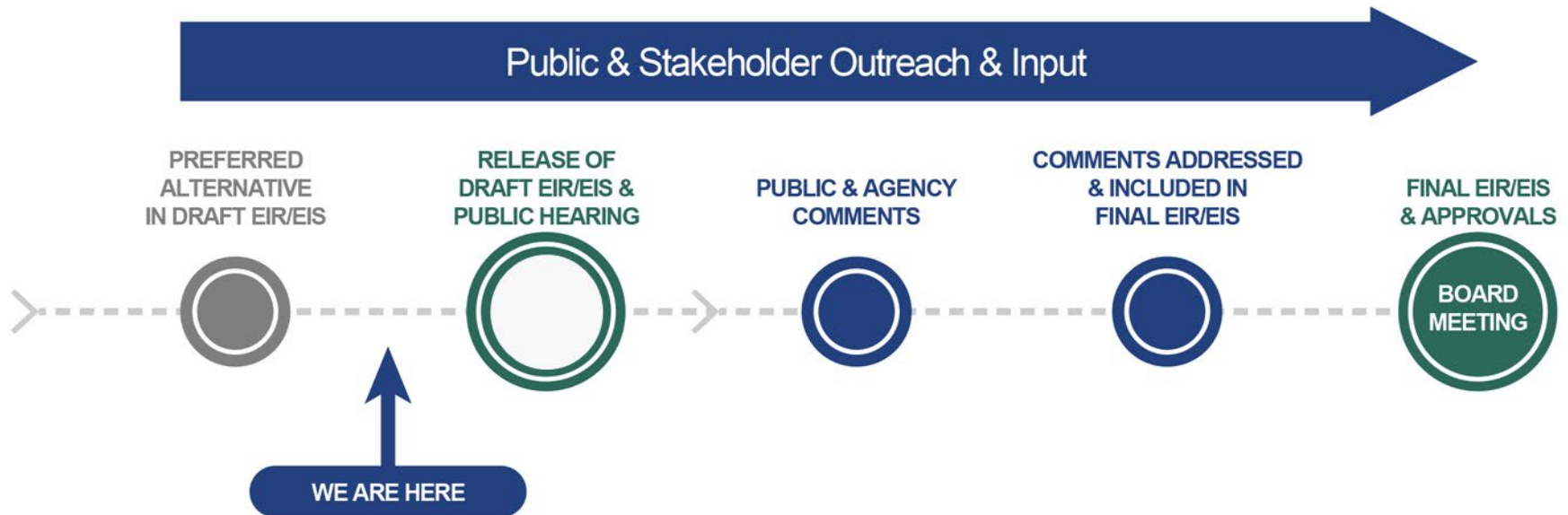
CALIFORNIA HIGH-SPEED RAIL

Where We've Been – Alternatives Analysis



BURBANK TO LOS ANGELES ENVIRONMENTAL CALIFORNIA HIGH-SPEED RAIL

Next Steps in Defining Full Phase 1 Route



ENVIRONMENTAL NEXT STEPS

CALIFORNIA HIGH-SPEED RAIL

Environmental Document Release

Draft EIR/EIS Release May 2020

- Document provides an opportunity to comment
- Public hearings will be held after Draft EIR/EIS document release
- Minimum 45-day review and comment period
- Draft EIR/EIS will be available at www.hsr.ca.gov

Subscribe

- Notification via USPS and email will be sent out around the release
- Make sure to subscribe on the Authority website under “Contact Us” to receive high-speed rail notifications

Opportunities to submit public comments on the Draft EIR/EIS

- At public hearings
- Online via the Authority website at www.hsr.ca.gov
- Email to Burbank_Los.Angeles@hsr.ca.gov with the subject line “Draft EIR/EIS Comment”
- U.S. Mail to:
“Burbank to Los Angeles Draft EIR/EIS Comment”
770 L Street, Suite 620 MS-1, Sacramento, CA 95814



NEXT STEPS ENVIRONMENTAL

CALIFORNIA HIGH-SPEED RAIL

Contents of Environmental Documents

Draft EIR/EIS Structure

- **Executive Summary:** Includes the major conclusions and areas of controversy.
- **Purpose & Need Statement:** Explains the reason the agency is proposing the action and what the agency expects to achieve.
- **Alternatives:** Describes the alternatives environmentally evaluated.
- **Affected Environment, Environmental Consequences & Mitigation Measures:** Describes the affected environment, the environmental impacts caused by the alternatives and the mitigation measures to avoid or reduce the impacts.
- **Section 4(f)/6(f):** Evaluates if the project would have impacts on Section 4(f)/6(f) resources.
- **Environmental Justice:** Evaluates if the project would have disproportionately high and adverse impacts on environmental justice populations.
- **Costs & Operations:** Presents the capital and operating costs of the project.
- **Other CEQA/NEPA Considerations:** Identifies the significant and unavoidable impacts of the project.
- **Preferred Alternative:** Identifies the Preferred Alternative.
- **Public Agency & Involvement:** Summarizes the outreach and engagement with the public and agencies.
- **Distribution List:** Provides a list of locations where the document is available for review.
- **List of Preparers:** Provides a list of preparers of the document.
- **References, Glossary, Index, Acronyms:** Provides sources and definitions of terms.
- **Appendices:** Provide background materials prepared in connection with the Draft EIR/EIS.



ENVIRONMENTAL NEXT STEPS

CALIFORNIA HIGH-SPEED RAIL

Where to Review Environmental Documents

Printed copies of the Draft EIR/EIS will be available for review:

- At local public libraries
- At the Southern California Regional Office (Los Angeles)
- At the California High-Speed Rail Office (Sacramento)
- Upon request via records@hsr.ca.gov
- Electronic copies will be available at www.hsr.ca.gov

The Notice of Availability and Executive Summary will also be available in Spanish, Japanese, Chinese, Tagalog, Armenian, Arabic, Korean & Vietnamese



ENVIRONMENTAL NEXT STEPS

CALIFORNIA HIGH-SPEED RAIL

Final Environmental Document Process

After conclusion of the public comment period, the Authority will:

- Prepare responses to comments
- Revise the environmental document as needed and include responses to comments
- Release the Final EIR/EIS
- Consider approval of the project and issue a Record of Decision (NEPA) and Notice of Determination (CEQA)



STAY INVOLVED

CALIFORNIA HIGH-SPEED RAIL

Burbank to Los Angeles Project Section

(877) 977-1660

Burbank_Los.Angeles@hsr.ca.gov

Southern California Regional Office

California High-Speed Rail Authority

355 S. Grand Avenue, Suite 2050

Los Angeles, CA 90071

www.hsr.ca.gov



@cahsra



facebook.com/CaliforniaHighSpeedRail



@cahsra



youtube.com/CAHighSpeedRail

