

CALIFORNIA HIGH-SPEED RAIL: FRESNO HISTORIC STATION RETROFIT REQUEST FOR QUALIFICATIONS PRE-BID

Virtual Pre-Bid
June 17, 2021



WELCOME AND AGENDA

- **HSR Project Overview**

- » Toni Tinoco, Central Valley Deputy Regional Director

- **Procurement Overview**

- » Meg Cederoth, Director of Planning and Sustainability

- » James Deane, Station Lead, Rail and Operations Delivery Branch, Rail Engineering Section

- **Small Business Program Overview**

- » Katrina Blair, Chief, Process and Program Development Branch



PROCUREMENT PROCESS DETAILS

- RFQ advertised on Tuesday, June 8, 2021
- Questions due by Wednesday, June 23, 2021
- Statement of Qualifications due Tuesday, August 24, 2021
- The RFQ can be downloaded from the Cal eProcure website:

» <https://caleprocure.ca.gov/event/2665/0000019951>

» Please note: *When linking to the DGS Cal eProcure site you may be directed to a log-in screen. If that happens, please refresh the page to be redirected to the HSR20-36 Historic Fresno Station Design procurement page.*



QUESTIONS AND RESOURCES

- Written questions regarding the procurement can be emailed to:

» capitalprocurement@hsr.ca.gov

- Answers to questions and any RFQ updates will be posted to Cal eProcure.

- Station Procurement Webpage:

» https://hsr.ca.gov/business-opportunities/contractors/historic_fresno_station_design/

» Can be found by going to:

- hsr.ca.gov
- Select: Business Opportunities
- Listed under: Contractors

The screenshot shows the California High-Speed Rail Authority website. The header includes the logo and navigation links: About, Programs, High-Speed Rail in California, Business Opportunities, Jobs, Communications & Outreach. The main content area is titled 'Design Services for Historic Fresno Station Seismic and Accessibility Renovations' and features an aerial photograph of the station site. Below the photo, text describes the procurement for architectural and engineering (A&E) services to make required seismic and accessibility improvements to existing historic structures at the Southern Pacific Railroad Depot in Fresno, California. It also mentions that the contract includes support services to the Authority during the anticipated procurement of a construction contractor. A link to the RFQ is provided: <https://calprocure.ca.gov/event/2665/0000019951>. A note at the bottom states: '(When linking to the DGS Cal eProcure site you may be directed to a log-in screen. If that happens, please refresh the page to be redirected to the HSR20-36 Historic Fresno Station Design procurement page.)' On the right side, there is a blue sidebar with links: 'Contracts Out for Bid', 'Design-Build Construction Packages', and 'Track & Systems'. Below this is a 'RESOURCES' section with links to 'Cal eProcure', 'Small Business Program', 'Design-Builder Jobs/Employment', and 'Construction Contracts'.



CALIFORNIA HIGH-SPEED RAIL: FRESNO HISTORIC STATION RETROFIT REQUEST OF QUALIFICATIONS PRE-BID

Toni Tinoco
Central Valley Deputy Regional Director



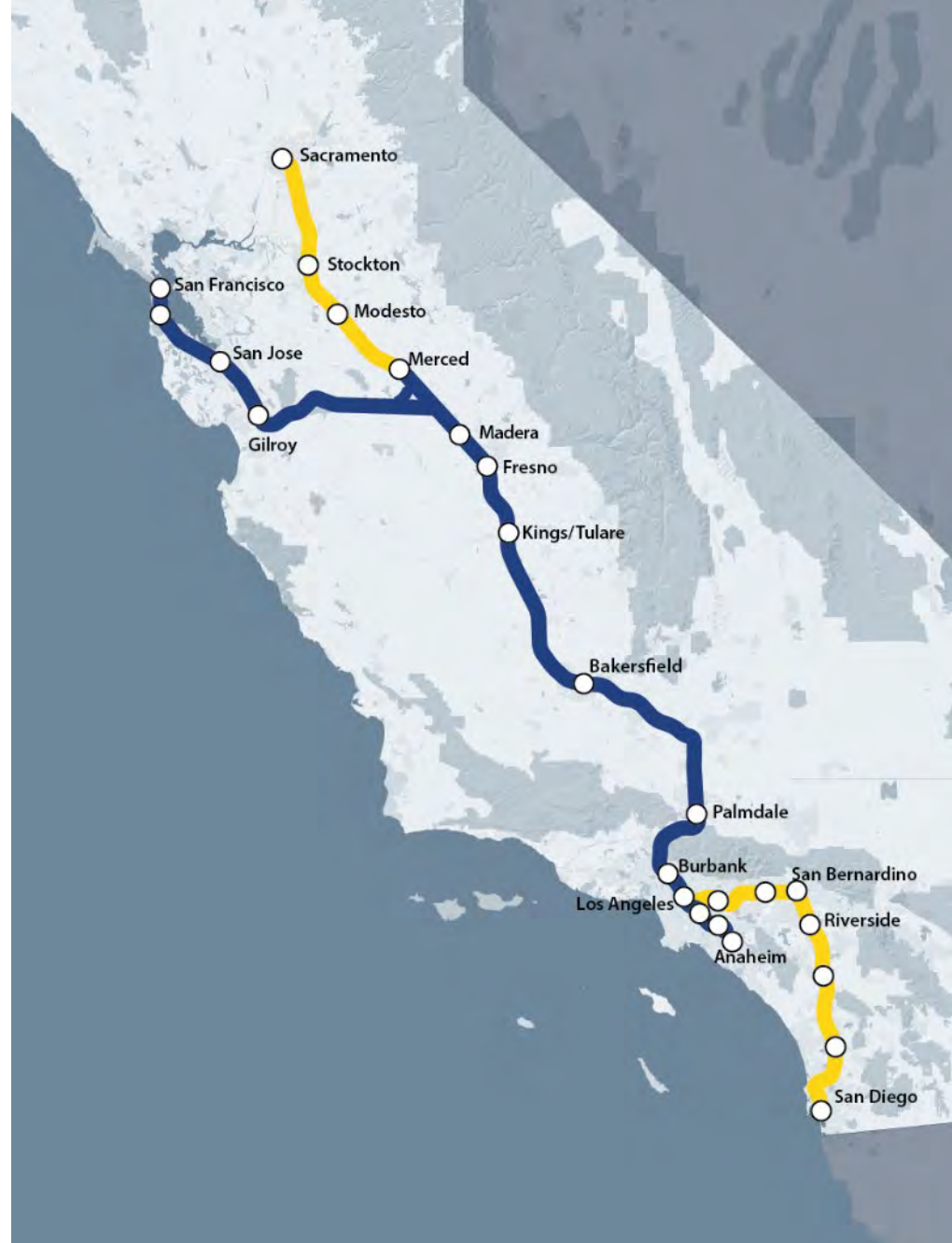
MISSION

CALIFORNIA HIGH-SPEED RAIL

To initiate the construction of a high-speed train system that utilizes an alignment and technology capable of sustained speeds of 200 miles per hour or greater.

Three principles guide our decisions:

1. Initiate high-speed rail service in California as soon as possible.
2. Make strategic, concurrent investments that will be linked over time and provide mobility, economic and environmental benefits at the earliest possible time.
3. Position ourselves to construct additional segments as funding becomes available.



PROJECT SCOPE

CALIFORNIA HIGH-SPEED RAIL

Phase I:

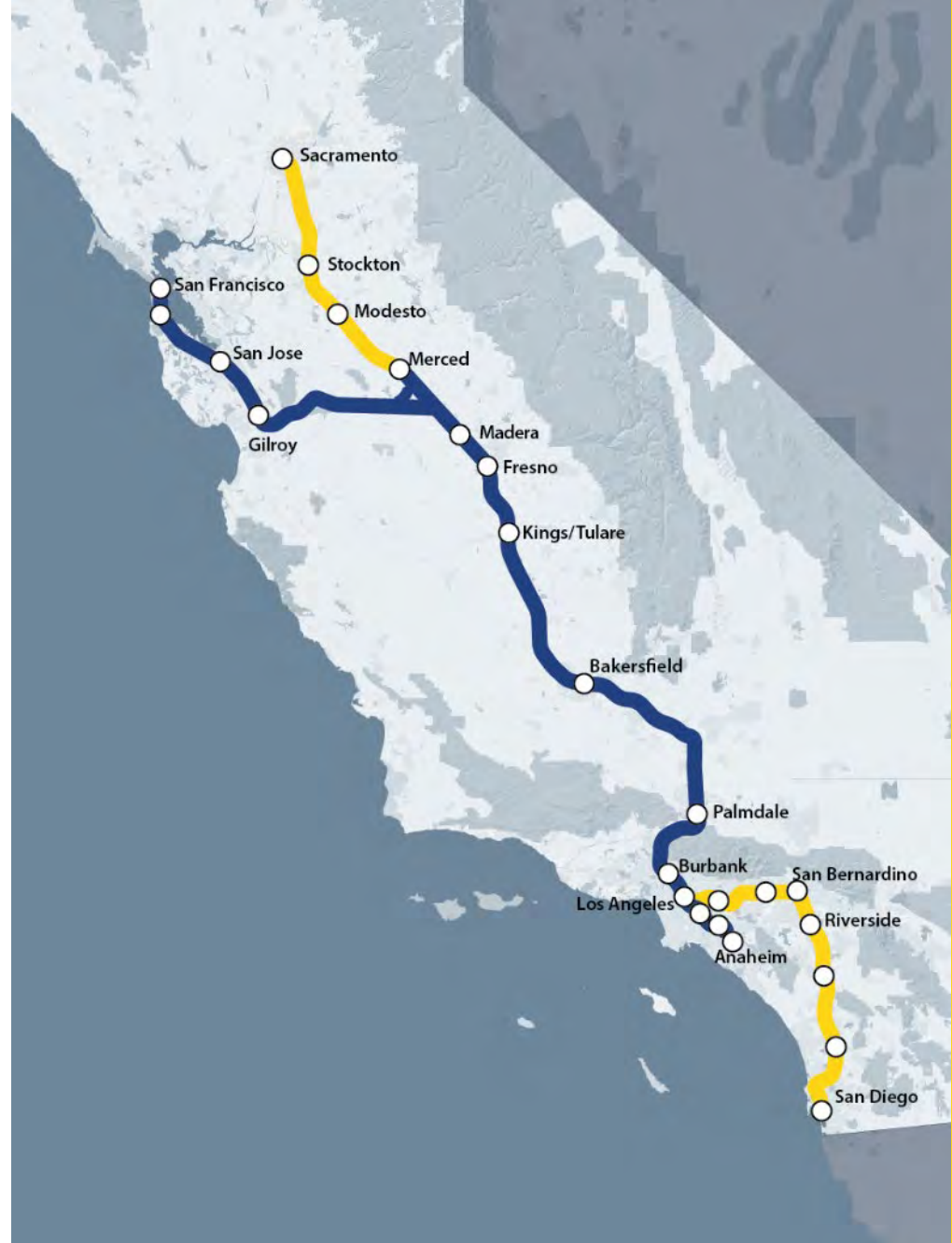
- » 520 Miles
- » San Francisco to Los Angeles/Anaheim

Phase II:

- » Extends 300 Miles
- » Connections to Sacramento and San Diego

At Least 200 mph

Up to 24 Stations



PROGRAM PROGRESS

CALIFORNIA HIGH-SPEED RAIL

Today:

- » 199 miles environmentally cleared
- » 119 miles under construction
- » Caltrain electrification construction underway
- » Funding committed for LAUS improvements
- » MOU with Brightline West
- » Environmentally clearing full 500 miles between LA- SF
- » Station planning



CURRENT CONSTRUCTION IN THE CENTRAL VALLEY

CONSTRUCTION PACKAGE 1

SAN JOAQUIN RIVER VIADUCT



- Construction Package 1 (CP 1) is the first construction contract executed on the Initial Operating Section
- Extends 32-miles between Avenue 19 in Madera County to East American Avenue in Fresno County
- Includes 22 grade separations, 3 viaducts, a major river crossing over the San Joaquin River and 2 trenches. Estimated Completion Date: December 2023



CURRENT CONSTRUCTION IN THE CENTRAL VALLEY

CONSTRUCTION PACKAGE 2-3

Conejo Avenue Viaduct



- Construction Package 2-3 (CP 2-3) is the second significant construction contract executed on the Initial Operating Section
- Extends approximately 65 miles from the terminus of Construction Package 1 at East American Avenue in Fresno to one mile north of the Tulare-Kern County line
- Includes approximately 36 grade separations in the counties of Fresno, Tulare and Kings, including viaducts, underpasses and overpasses.
Estimated Completion Date: December 2023



CURRENT CONSTRUCTION IN THE CENTRAL VALLEY

CONSTRUCTION PACKAGE 4

Wasco Viaduct



- Construction Package 4 (CP 4) is the third significant construction contract executed on the Initial Operating Section
- 22-mile stretch bounded by a point approximately one mile north of the Tulare/Kern County Line at the terminus of Construction Package 2-3 and Poplar Avenue to the south
- Will include construction of at-grade, retained fill and aerial sections of the high-speed rail alignment and the relocation of four miles of existing Burlington Northern Santa Fe (BNSF) tracks Estimated Completion Date: April 2022



PROGRAM UPDATE

PROGRAM HIGHLIGHTS

- **5,500 + construction jobs created since construction began**
 - » 3,700 National Targeted Worker hiring (disadvantaged communities)
- **621 small businesses employed**
- **CA High-Speed Rail will be 100% electric run on renewable energy**
 - » Currently using Tier IV equipment
 - » Will provide mode shift
 - » Will reduce VMT (taking 400k cars off the road annually)



CALIFORNIA HIGH-SPEED RAIL: FRESNO HISTORIC STATION RETROFIT REQUEST FOR QUALIFICATIONS PRE-BID

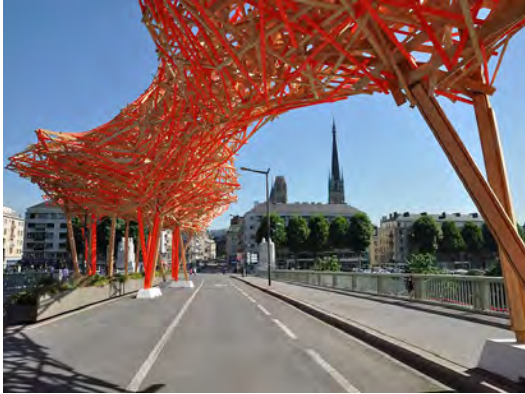
Meg Cederoth, Director of Planning and Sustainability

James Deane, Rail and Operations Delivery Branch,
Rail Engineering Section, Station Lead



STATION SITE ACTIVATION

Create a place with Amenities and Businesses



Public Art



Farmers Market



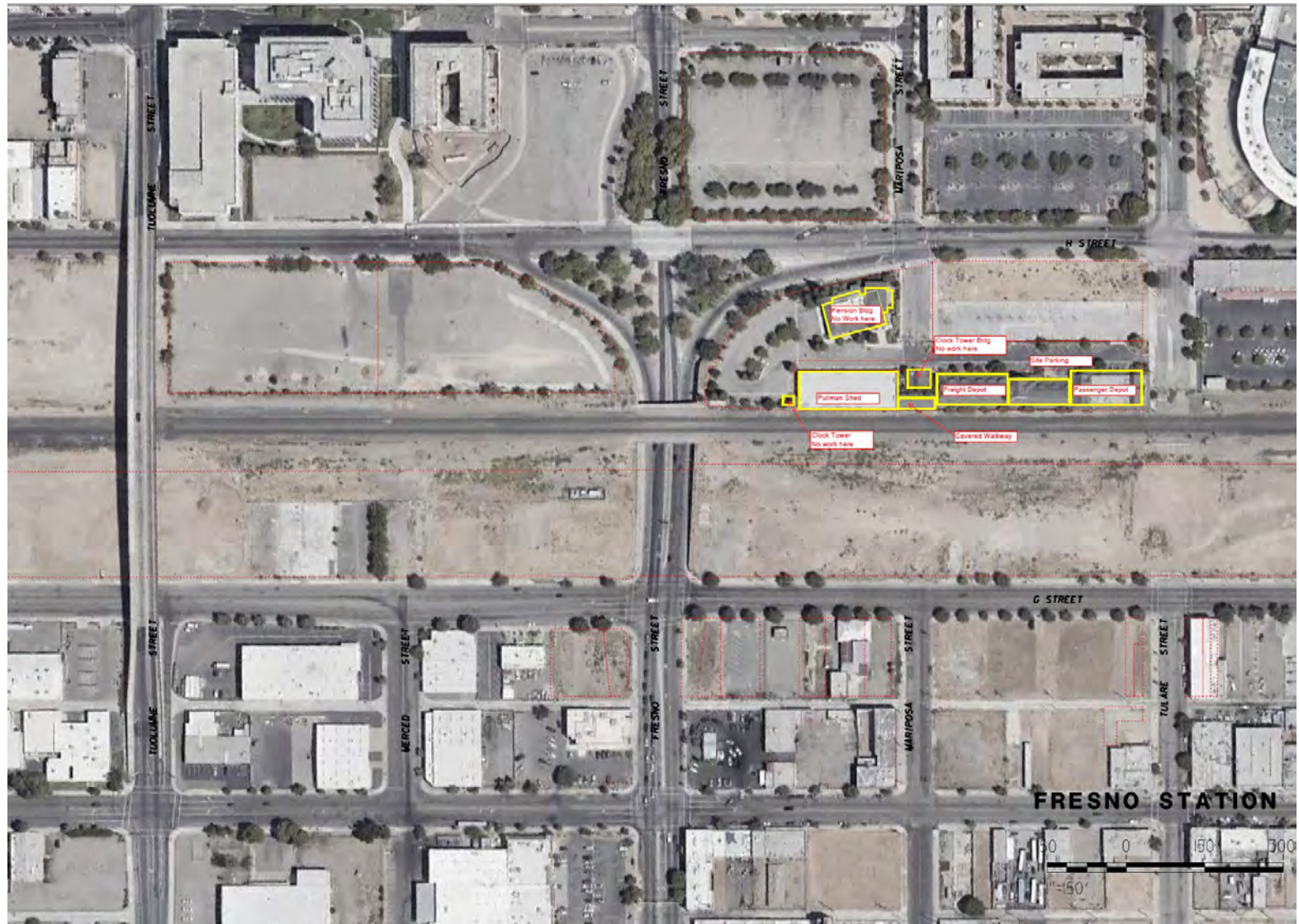
Outdoor Festival



Shade Structure Showcase



SITE



HISTORIC BACKGROUND



- The Project Site is made up of existing historic structures that the Authority plans to use as part of its proposed high-speed rail station in Fresno, California.
- The existing structures were nominated to the National Register of Historic Places in 1977 and are currently listed on the National, State, and Fresno Historic Registers.
- The structures have been renovated several times over their life in ways that have impacted their historic elements, including minor maintenance renovations and, most recently, a change of use in 1985.
- The Project Site structures now require investigation and renovations to bring them into compliance with federal, State, and local regulations for seismic, life safety, and accessibility for the disabled in a manner that maintains historical integrity.



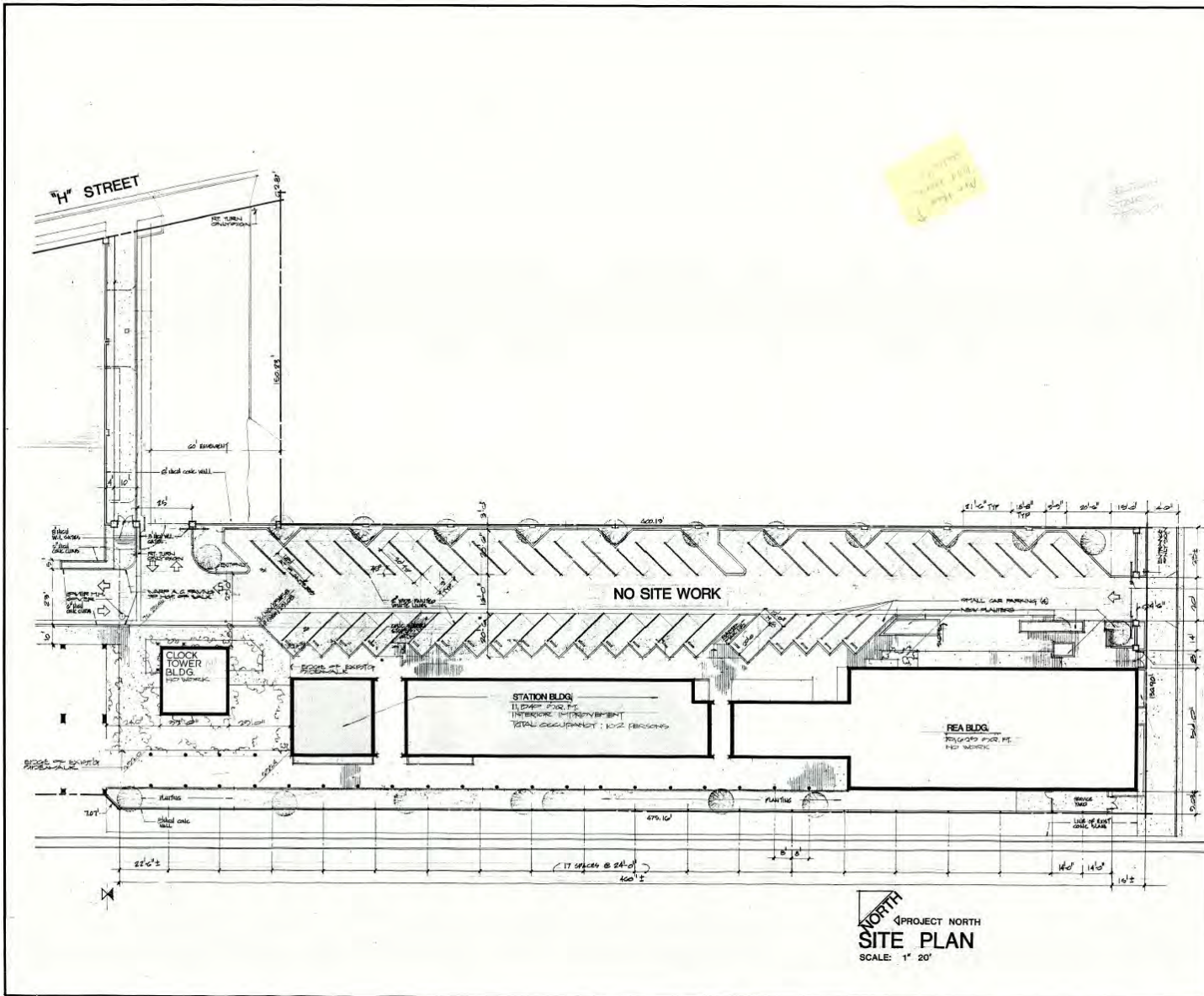
HISTORIC BACKGROUND



- The existing structures were built in approximately 1890 and consist of clay tile roof and plaster/stucco walls.
- The Passenger Depot, Freight Depot, and Connecting Walkway structures are comprised of wood and steel framing, wood roof diaphragms and wood shear walls and reinforced concrete foundations.
- These structures cover approximately 25,000 square feet. The Pullman Shed is a cast in place concrete structure covering approximately 24,000 square feet.



SITE







GENERAL NOTES

- All fire sprinkler pipe will be allowed to be painted or coated after inspection and approval.
- Will comply with all conditions of Site Plan Review #1.
- Ramp slopes to meet code requirements for physically handicapped 1:8 without handrails 1:12 with handrails.
- Elevator facilities shall meet code requirements for physically handicapped.
- Prior to issuance of a building permit, the Architect will have on file a certificate of Workers' Compensation issued by the Dept. of Planning and Inspection made out to the contractor to whom the building permit is to be issued.
- Exit door hardware will meet requirements of UBC 705.4.3.
- Provide portable fire extinguishers as per NFPA 704.
- Provide fire and draft stops 12" vertical and 20" horizontal in enclosed areas.
- Provide plans for alarm for automatic fire sprinklers upon prior to installation.
- Install a reduced pressure principle backflow device on the domestic water supply as per Public Works Standard.
- Floor drains shall be provided with trap primers.
- All interior hose bibbs to be provided with vacuum protection.
- Pressure relief discharge valve shall be located in the vicinity of the building in a downwind position. (See H.M.C. Section).
- All high priced masonry to comply with V.F.C., Art. 24.

PROJECT DATA

TYPE Y ONE BR. CONSTRUCTION
FIRE ZONE 2

TOTAL BUILDING AREA	
FIRST FLOOR	9,136 SQ. FT.
SECOND FLOOR	1,438 SQ. FT.
TOTAL	10,574 SQ. FT.

TOTAL OCCUPANTS 106
SPRINKLED THROUGHOUT

THIS BUILDING IS ON THE NATIONAL REGISTRY OF HISTORICAL PLACES

R.E.A. BUILDING INTERIORS

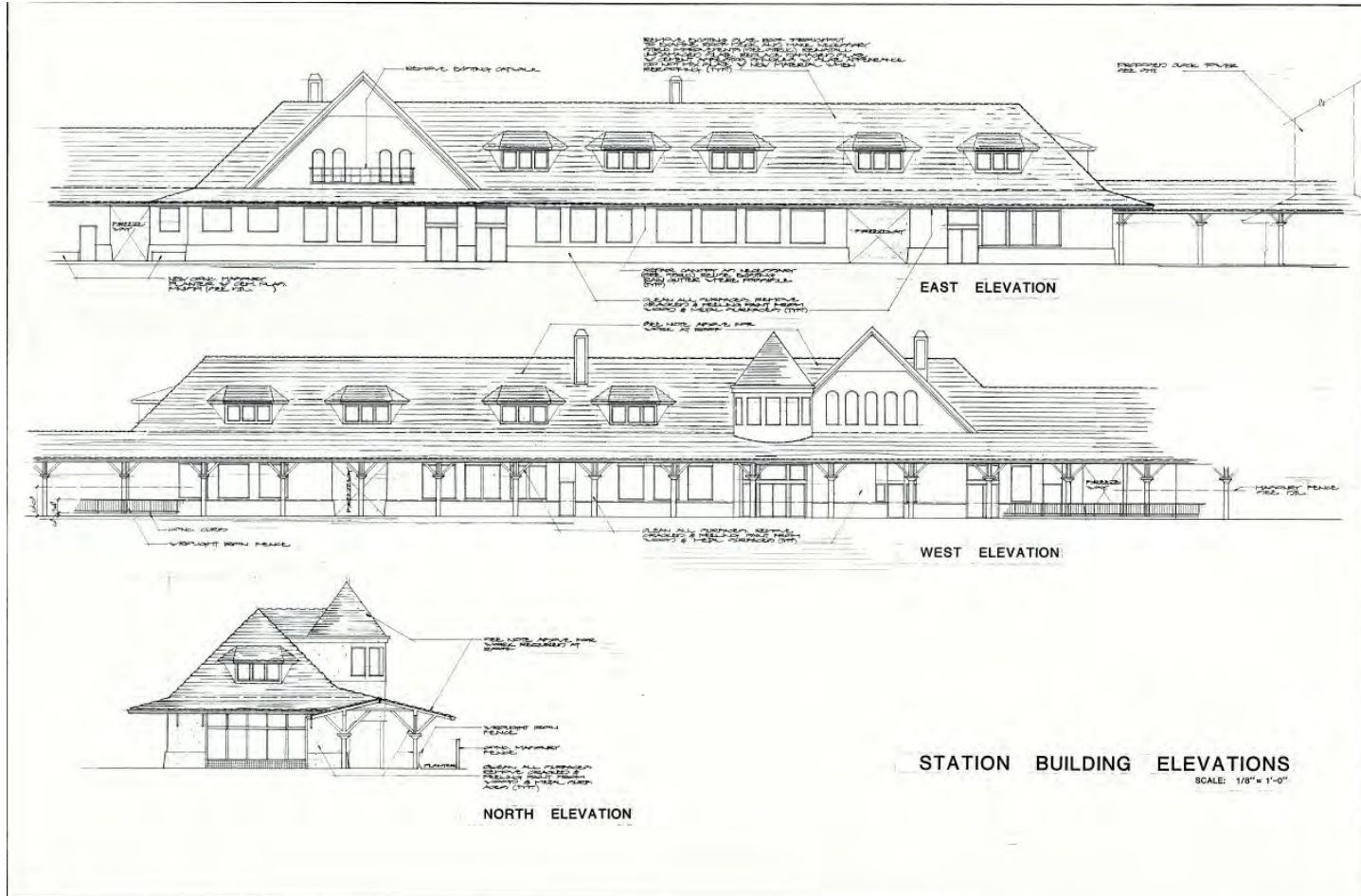
NORTH

FIRST FLOOR
9,136 SQ. FT.

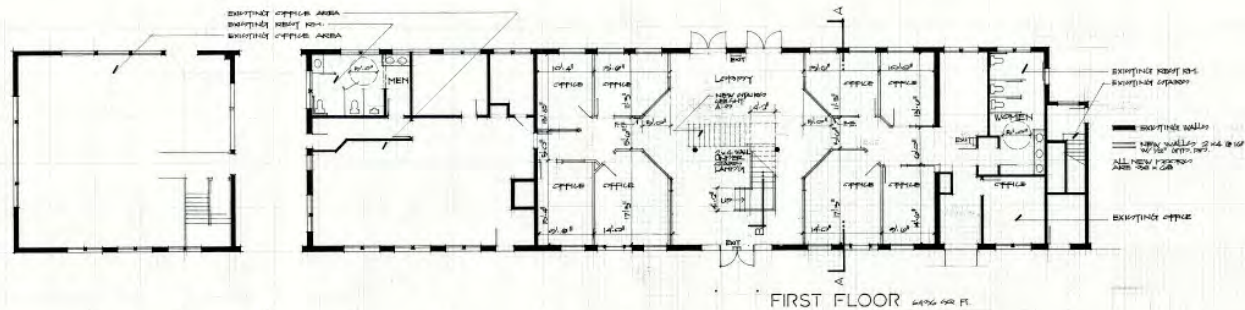
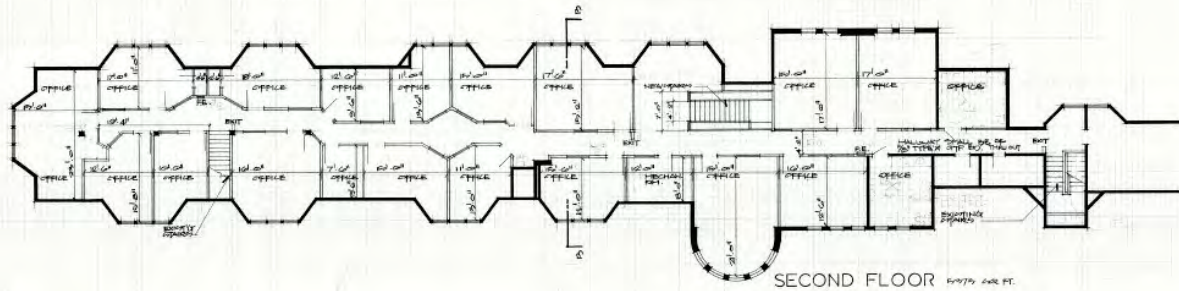
LEGEND:
EXISTING WALL
NEW PARTIAL WALL
ALL NEW DOORS ARE 2 1/4" GP

DETAILS:
A - TYPICAL OFFICE SECTION
B - TYPICAL CORRIDOR SECTION
C - BASE
D - WINDOW SILL AND FINISHES
E - WINDOW SILL AND FINISHES
F - WINDOW SILL AND FINISHES
G - WINDOW SILL AND FINISHES
H - WINDOW SILL AND FINISHES
I - WINDOW SILL AND FINISHES
J - WINDOW SILL AND FINISHES
K - WINDOW SILL AND FINISHES
L - WINDOW SILL AND FINISHES
M - WINDOW SILL AND FINISHES
N - WINDOW SILL AND FINISHES
O - WINDOW SILL AND FINISHES
P - WINDOW SILL AND FINISHES
Q - WINDOW SILL AND FINISHES
R - WINDOW SILL AND FINISHES
S - WINDOW SILL AND FINISHES
T - WINDOW SILL AND FINISHES
U - WINDOW SILL AND FINISHES
V - WINDOW SILL AND FINISHES
W - WINDOW SILL AND FINISHES
X - WINDOW SILL AND FINISHES
Y - WINDOW SILL AND FINISHES
Z - WINDOW SILL AND FINISHES

ELEVATIONS- PASSENGER STATION



PLANS- PASSENGER STATION



NOTES:
 1. NEW, APPROVED BUT CHANGES CONSTRUCTION.
 2. NEW, APPROVED BUT CHANGES CONSTRUCTION.
 3. NEW, APPROVED BUT CHANGES CONSTRUCTION.
 4. NEW, APPROVED BUT CHANGES CONSTRUCTION.
 5. NEW, APPROVED BUT CHANGES CONSTRUCTION.
 6. NEW, APPROVED BUT CHANGES CONSTRUCTION.
 7. NEW, APPROVED BUT CHANGES CONSTRUCTION.
 8. NEW, APPROVED BUT CHANGES CONSTRUCTION.
 9. NEW, APPROVED BUT CHANGES CONSTRUCTION.
 10. NEW, APPROVED BUT CHANGES CONSTRUCTION.

STATION BUILDING
 FLOOR PLANS

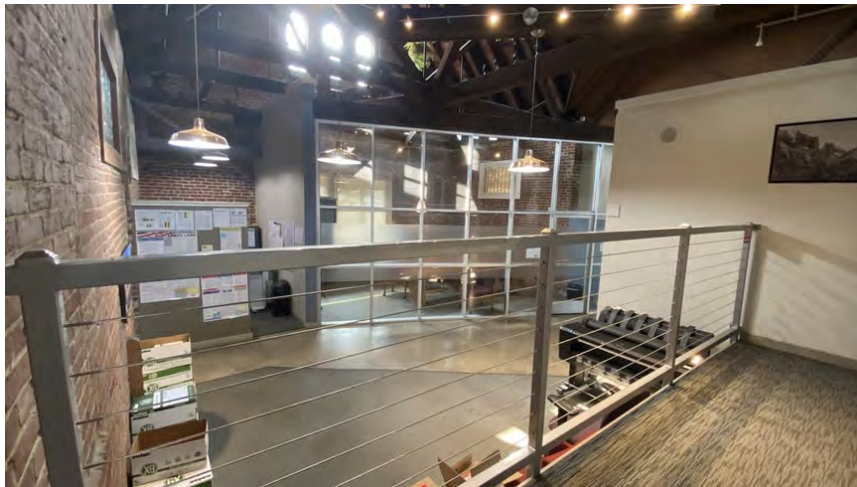
SCALE: 1/8" = 1'-0"



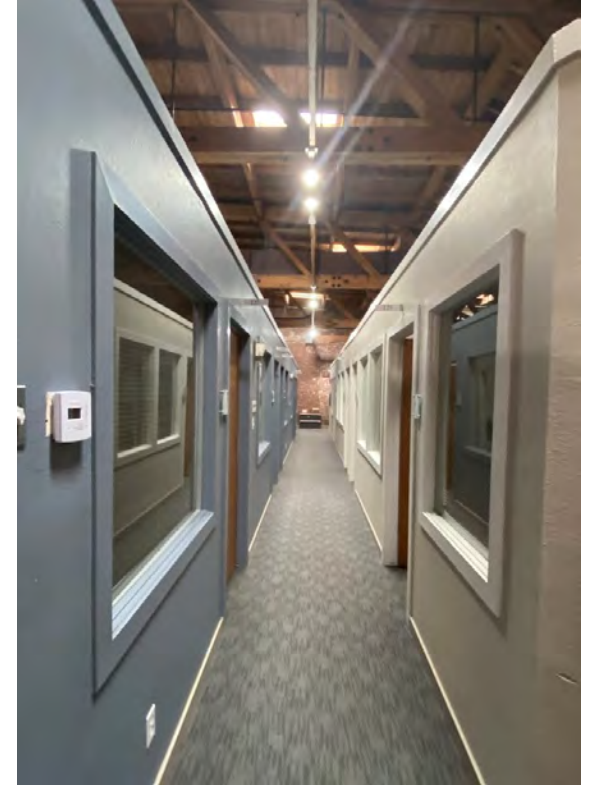
ADDITIONAL STATION IMAGES – EXTERIORS



ADDITIONAL STATION IMAGES – INTERIORS



ADDITIONAL STATION IMAGES – INTERIORS



SCOPE OF WORK- SUMMARY

- **Accessibility:**

- » Consultant shall investigate, analyze, and prepare construction documents that identify all work required to bring the Project Site into compliance with federal, State, and local regulatory requirements for accessibility based on their current uses as public employee office space, business, and storage.

- **Seismic:**

- » Consultant shall investigate, analyze, and prepare construction documents that identify all work required to bring the Project Site into compliance with federal, State, and local regulatory requirements for life safety and seismic.



SCOPE OF WORK

- **Activity 1: Contract Management**

- » Consultant shall develop a management plan to document how Consultant will deliver the Work.

- **Activity 2: Pre-Design Services**

- » Consultant shall collect and analyze information about the facilities to develop repair and renovation recommendations for the Authority.

- **Activity 3: Design Services**

- » Consultant shall prepare all design documents required to define and document the required repairs and retrofits. Consultant shall prepare all documents required to obtain all required Regulatory Approvals and make all required revisions to the work to satisfy all regulatory agencies.

- **Activity 4: Construction Support**

- » Consultant shall support the Authority with the procurement of a Construction Contractor. Consultant shall support the Authority during construction to observe the work and resolve design issues.



SCOPE OF WORK- ACTIVITIES AND TASKS

- **Activity 1: Contract Management**

- » Task 1 Project Management Plan

- **Activity 2: Pre-Design Services**

- » Task 1: Investigation

- » Task 2: Analysis

- **Activity 3: Design Services**

- » Task 1: Design Documentation

- » Task 2: Regulatory Approvals

- » Task 3: Ready to Bid Documents

- **Activity 4: Construction Support**

- » Task 1: Bid Support

- » Task 2: As-Bid Documents

- » Task 3: Construction Support



SCHEDULE

Activity/Task	Anticipated Duration (in Business Days):
Activity 1: Contract Management	20 days
Task 1: Project Management Plans	15 days
Authority Review and Approval	5 days
Activity 2- Pre-Design Services	100 days
Task 1: Investigation	30 days
Task 2: Analysis	30 days
Authority Review and Approval	10 days
Local and SHPO Review and Approval	30 days
Activity 3- Design Services	105 days
Task 1: 100% Design Documentation	30 days
Authority Review and Approval	10 days
Task 2: Regulatory Approvals	30 days
Authority Review and Approval	10 days
Task 3: Ready to Bid Documents	15 days
Authority Review and Approval	10 days
Activity 4: Construction Support	160 days
Task 1: Bid Support	30 days
Task 2: As-Bid Documents	10 days
Task 3: Construction Support	120 days



DOCUMENTS AVAILABLE

- **Existing Drawings**

- » Existing Floorplans Centerline Design Project 08-192.
- » Existing Drawings Jeffery Baird Loring Architects 1985.

- **Seismic Report**

- » Seismic Evaluation Report High-Speed Rail Authority Historic Train Depot – Compliance Studies 1713 Tulare Street Fresno, CA 93721 California Department of General Services Job # 000000000005213.

- **Accessibility Report**

- » Accessibility Report High-Speed Rail Authority Historic Train Depot – Compliance Studies State of California Department of General Services Job # 000000000005213, October 17, 2019.

- **Historic Facility Reports**

- » US Department of the Interior National Park Service National Register of Historic Places Inventory – Nomination Form PH0507776
- » CHSRA Annual Report for State-Owned Historical Resources in Compliance with section 5024 and 5024.5 of the California Public Resources Code Reporting Period: March 10, 2015–June 30, 2018, August 2018.
- » CHSRA Final Fresno to Bakersfield Section, section 106 Built Environment Treatment Plan 2012.
- » Pre-Construction Condition Assessment Report for 1713 Tulare Street, December 2014.
- » Plan For Protection And Stabilization And Response Plan For Unanticipated Effects And Inadvertent Damage For 1713 Tulare Street, December 2016.
- » 1713 Tulare Street, Plan For Protection And Stabilization And Response Plan For Unanticipated And Inadvertent Damage, March 24, 2022.
- » Programmatic Agreement Among The Federal Railroad Administration, The Advisory Council On Historic Preservation, The California State Historic Preservation Officer, And The California High-Speed Rail Authority Regarding Compliance With Section 106 Of The National Historic Preservation Act, As It Pertains To The California High-Speed Train Project.
- » CHSRA Mitigation Monitoring and Enforcement Plan Merced to Fresno Section September 2012 Revision 1 April 2014.
- » California High-Speed Rail Authority Fresno to Bakersfield Section Supplemental Record of Decision April 2018.



CALIFORNIA HIGH-SPEED RAIL: FRESNO HISTORIC STATION RETROFIT REQUEST FOR QUALIFICATIONS PRE-BID

Catrina Blair

Chief, Process and Program Development Branch



SMALL BUSINESS PROGRAM

SMALL BUSINESS PARTICIPATION

AS OF APRIL 2021



- **30% Goal for Small Business Participation**

- » 10% Disadvantaged Business Enterprises (DBE)
- » 3% Disabled Veteran Business Enterprises (DVBE)

- **Ashley Mistler**

- » Small Business Advocate
- » Small Business & Title VI Program Manager
- » SBAdvocate@hsr.ca.gov



COMMITMENT TO DIVERSE SMALL BUSINESSES

- **Certifications That Count Toward the Overall Goal:**
 - » **California Department of General Services**
 - » Small & Micro Businesses
 - » Disabled Veteran Business Enterprises
 - » **California Unified Certification Program**
 - » Disadvantaged Business Enterprises
 - » **US Small Business Administration**
 - » 8(a) Disadvantaged Business Program



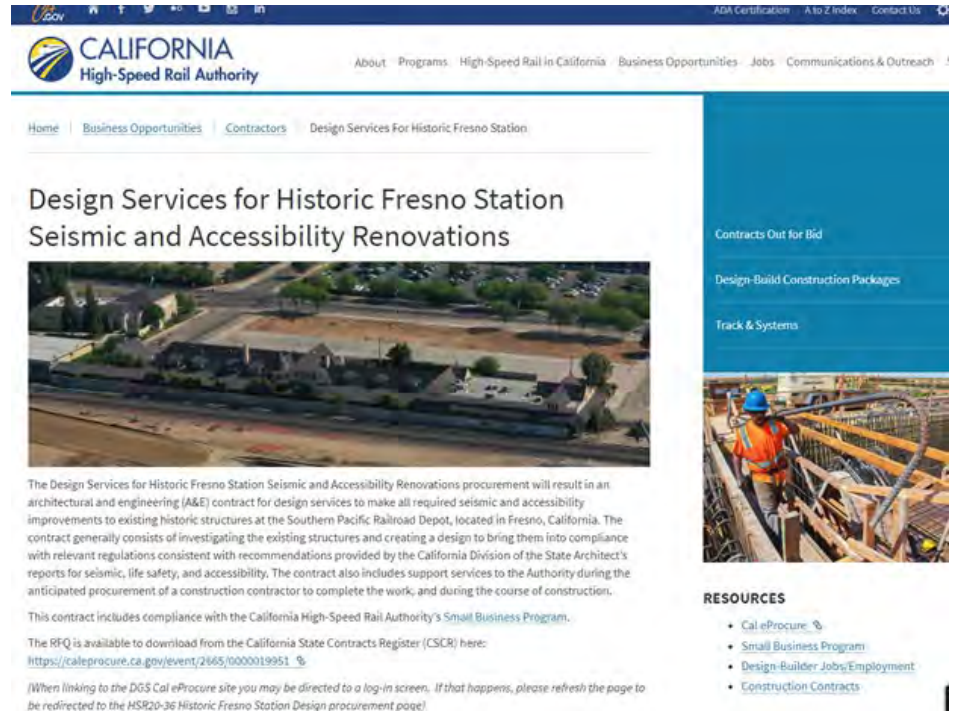
CONNECT HSR: HIGH-SPEED RAIL VENDOR REGISTRY

- Free Online Tool to Connect with Business Opportunities
- Open to All Businesses, Both Large & Small
- Describe Your Business:
 - » Type of Business
 - » Services Offered or Supplies Sold
 - » Service Counties
 - » Certifications
- Learn About:
 - » Future Contracting Opportunities
 - » Trainings/Workshops
- Register at www.connecthsr.com
- All State Contracts are Advertised Through:
<https://caleprocure.ca.gov>



QUESTIONS AND RESOURCES

- Written questions regarding the procurement can be emailed to:
 - » capitalprocurement@hsr.ca.gov
- Answers to questions and any RFQ updates will be posted to Cal eProcure.
- Station Procurement Webpage:
 - » https://hsr.ca.gov/business-opportunities/contractors/historic_fresno_station_design/
 - » Can be found by going to:
 - hsr.ca.gov
 - Select: Business Opportunities
 - Listed under: Contractors
- Registration list and PPT will be posted to the Webpage



The screenshot shows the California High-Speed Rail Authority website. The header includes the logo and navigation links: Home, Business Opportunities, Contractors, Design Services For Historic Fresno Station, About, Programs, High-Speed Rail in California, Business Opportunities, Jobs, Communications & Outreach. The main content area is titled "Design Services for Historic Fresno Station Seismic and Accessibility Renovations" and features an aerial photograph of the station site. Below the photo, text describes the procurement: "The Design Services for Historic Fresno Station Seismic and Accessibility Renovations procurement will result in an architectural and engineering (A/E) contract for design services to make all required seismic and accessibility improvements to existing historic structures at the Southern Pacific Railroad Depot, located in Fresno, California. The contract generally consists of investigating the existing structures and creating a design to bring them into compliance with relevant regulations consistent with recommendations provided by the California Division of the State Architect's reports for seismic, life safety, and accessibility. The contract also includes support services to the Authority during the anticipated procurement of a construction contractor to complete the work, and during the course of construction. This contract includes compliance with the California High-Speed Rail Authority's Small Business Program. The RFQ is available to download from the California State Contracts Register (CSCR) here: <https://caleprocure.ca.gov/event/2665/0000019951> (When linking to the DGS Cal eProcure site you may be directed to a log-in screen. If that happens, please refresh the page to be redirected to the HSR20-36 Historic Fresno Station Design procurement page).

 On the right side, there is a blue sidebar with links: "Contracts Out for Bid", "Design-Build Construction Packages", and "Track & Systems". Below these links is a photograph of a construction worker in an orange safety vest and blue hard hat working on a steel structure. At the bottom of the sidebar, there is a "RESOURCES" section with links: "Cal eProcure", "Small Business Program", "Design-Build Jobs/Employment", and "Construction Contracts".

CALIFORNIA HIGH-SPEED RAIL



Headquarters

California High-Speed Rail Authority

770 L Street, Suite 800

Sacramento, CA 95814

www.hsr.ca.gov

