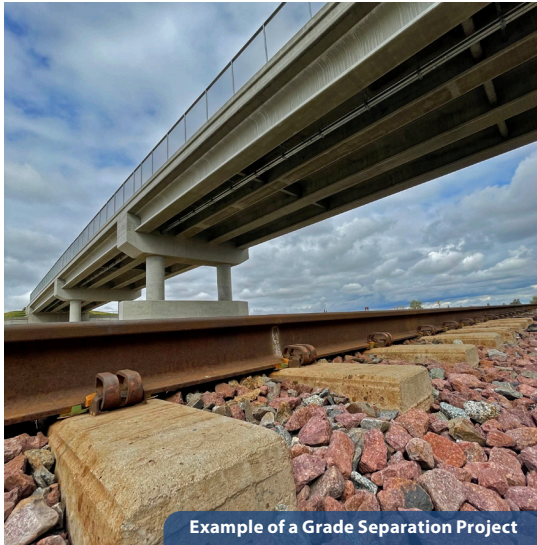




CALIFORNIA HIGH-SPEED RAIL: SIX GRADE SEPARATIONS IN THE CITY OF SHAFTER



Example of a Grade Separation Project



Central Valley Training Center



Conceptual Rendering

The California High-Speed Rail Authority is applying for a grant from the FY22 Railroad Crossing Elimination Program. This grant is intended to improve the health and safety of underserved communities in California's Central Valley. It will help eliminate highway-rail and pathway-rail grade crossings in the City of Shafter that are frequently blocked by trains. Money from this grant will also be used to reduce the environmental and health impacts that freight movement and railroad operations have on the surrounding community.

The California High-Speed Rail Authority's grant application will contribute to the elimination of six at-grade crossings of the BNSF freight line within the City of Shafter. Configuration-level design work in the region is underway and the request will allow the Authority to do the following:

- Construct two grade separations at Poplar Avenue and Riverside Avenue;
- Complete design and purchase right-of-way for four additional grade separations at Fresno Avenue, Shafter Avenue, Central Avenue, and East Lerdo Highway; and
- Continue funding support for the Central Valley Training Center in Selma, California.

This application is part of a holistic federal-state partnership strategy to leverage the significant investments the State of California has made to build the nation's first high-speed rail line.

To date, California has demonstrated significant funding commitment to the project with more than \$9 billion of general obligation bonds approved by California voters (Proposition 1A in 2008), and over \$5.2 billion to-date in dedicated portions of California's innovative Cap-and-Trade greenhouse gas reduction auction program revenues (through August 2022). California is the only state in the country to have committed this level of funding and to have advanced electrified, 220 mph high-speed rail this far.

This grant application for **\$67,217,252** builds on the federal government's prior investments of approximately \$3.5 billion that have contributed to the project's advancement in California's Central Valley. This federal partnership has provided vital financial support and has resulted in significant job opportunities in the State of California.