

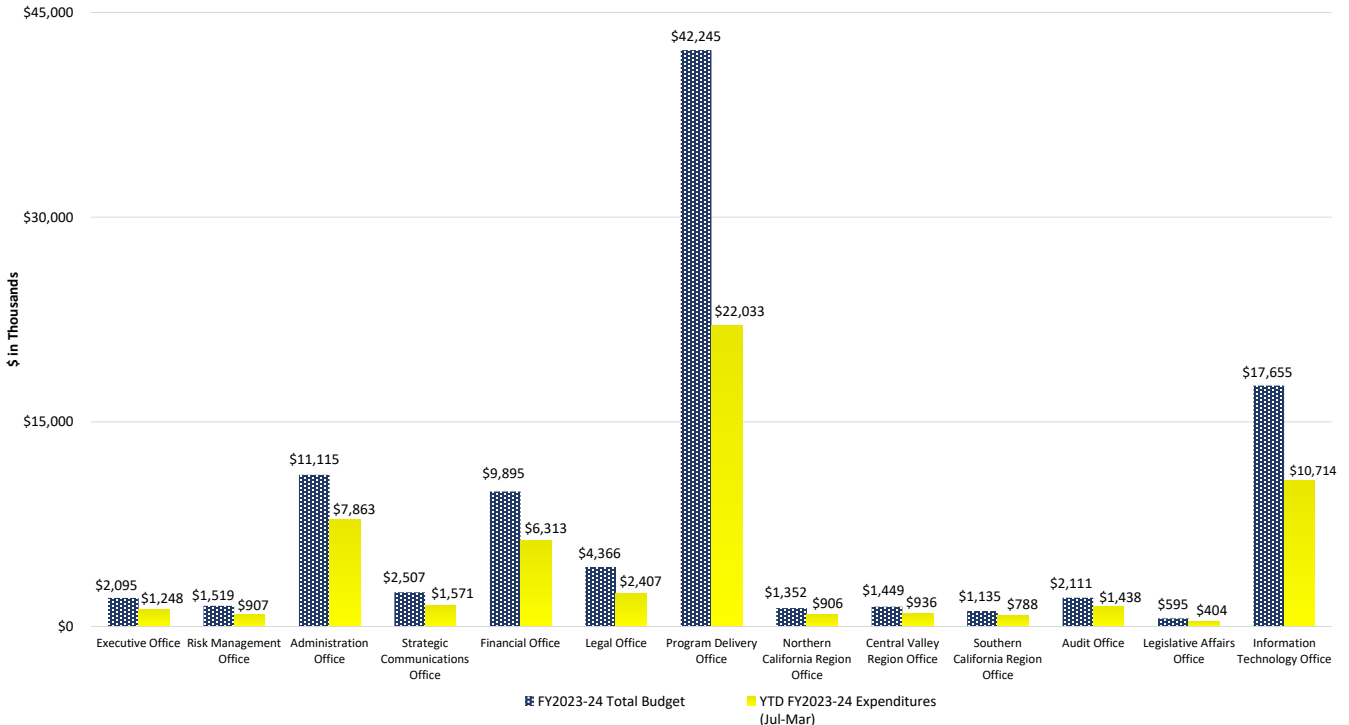
Data through March 31, 2024

Percentage of Fiscal Year Completed: 75.0%

**FY2023-24 Administrative Budget and Expenditures Summary**

Current Year 2023-24 (\$ in Thousands)	Notes	FY2023-24 Total Budget A	Monthly Expenditures (Mar) B	YTD FY2023-24 Expenditures (Jul - Mar) C	Total Remaining Budget (A - C)	YTD % of Budget Expended (C / A)	FY2023-24 Forecast (Apr - Jun) D	FY2023-24 YTD Expenditures & Forecast (C + D)
Executive Office		\$2,095	\$165	\$1,248	\$848	59.5%	\$596	\$1,843
Risk Management Office		\$1,519	\$102	\$907	\$612	59.7%	\$378	\$1,286
Administration Office		\$11,115	\$695	\$7,863	\$3,252	70.7%	\$2,702	\$10,565
Strategic Communications Office		\$2,507	\$189	\$1,571	\$936	62.7%	\$739	\$2,311
Financial Office		\$9,895	\$685	\$6,313	\$3,581	63.8%	\$3,281	\$9,594
Legal Office		\$4,366	\$319	\$2,407	\$1,960	55.1%	\$1,647	\$4,053
Program Delivery Office		\$42,245	\$2,550	\$22,033	\$20,212	52.2%	\$13,000	\$35,033
Northern California Region Office		\$1,352	\$111	\$906	\$446	67.0%	\$342	\$1,248
Central Valley Region Office	2	\$1,449	\$98	\$936	\$514	64.6%	\$362	\$1,297
Southern California Region Office		\$1,135	\$72	\$788	\$347	69.4%	\$257	\$1,045
Audit Office		\$2,111	\$168	\$1,438	\$673	68.1%	\$529	\$1,967
Legislative Affairs Office	2	\$595	\$51	\$404	\$191	67.9%	\$195	\$599
Information Technology Office		\$17,655	\$969	\$10,714	\$6,941	60.7%	\$6,047	\$16,761
<b>TOTAL</b>	<b>1, 2</b>	<b>\$98,040</b>	<b>\$6,175</b>	<b>\$57,528</b>	<b>\$40,512</b>	<b>58.7%</b>	<b>\$30,075</b>	<b>\$87,604</b>

**Expenditures vs. Total Budget  
FY2023-24**



#

**Footnotes**

- Statewide employee bargaining contracts are negotiated with the Administration on a periodic basis. Changes to these agreements impact the Authority's budget and updates to the budget are reflected subsequently at the appropriate reporting time. In some instances, forecast can exceed budget due to timing but will ultimately be trued up once DOF approves the additional funding.
- In March-24, various Transfer of Budget Allotments (TBA's) were completed to accommodate position reclasses and/or operating expenditures. These budget shifts result in a net-zero impact to the overall Administrative Budget.

Data through March 31, 2024

Percentage of Fiscal Year Completed: 75.0%

**FY2023-24 Administrative Budget Expenditures Summary  
 by Line Item Detail**

Description	Notes	FY2023-24 Total Budget	Monthly Expenditures (Mar)	YTD Expenditures (Jul - Mar)	Total Remaining Budget	FY2023-24 Forecast (Apr - Jun)	YTD Expenditures & Forecast
Salaries and Wages	1, 2	\$53,336,439	\$3,666,730	\$33,184,275	\$20,152,164	\$12,604,894	\$45,789,169
Benefits	1, 2	\$26,029,536	\$1,971,319	\$16,980,283	\$9,049,253	\$6,160,095	\$23,140,378
<b>TOTAL PERSONAL SERVICES</b>	<b>1, 2</b>	<b>\$79,365,975</b>	<b>\$5,638,049</b>	<b>\$50,164,558</b>	<b>\$29,201,417</b>	<b>\$18,764,989</b>	<b>\$68,929,547</b>
General Expense	2	\$539,298	\$10,816	\$136,496	\$402,802	\$402,802	\$539,298
Board Costs		\$49,000	\$18,859	\$37,546	\$11,454	\$11,454	\$49,000
Printing		\$238,000	\$0	\$5,284	\$232,716	\$232,716	\$238,000
Communications		\$651,000	\$71,719	\$348,311	\$302,689	\$302,689	\$651,000
Postage		\$20,000	\$2,586	\$8,941	\$11,059	\$11,059	\$20,000
Travel, In-State	2	\$696,197	\$34,062	\$348,130	\$348,067	\$348,067	\$696,197
Travel, Out-Of-State	2	\$91,466	\$0	\$23,045	\$68,421	\$68,421	\$91,466
Training	2	\$464,667	\$18,320	\$139,569	\$325,098	\$325,098	\$464,667
Rent - Building and Grounds		\$2,696,722	\$48,472	\$2,124,216	\$572,506	\$572,506	\$2,696,722
Consulting and Professional Services: Interdepartmental		\$3,452,715	\$69,921	\$416,692	\$3,036,023	\$3,036,023	\$3,452,715
Consulting and Professional Services: External		\$5,090,960	\$158,805	\$1,293,296	\$3,797,664	\$3,797,664	\$5,090,960
Consolidated Data Centers		\$1,963,000	\$89,891	\$673,774	\$1,289,226	\$1,289,226	\$1,963,000
Information Technology		\$2,721,000	\$13,505	\$1,808,438	\$912,562	\$912,562	\$2,721,000
<b>TOTAL OPERATING EXP AND EQUIP</b>		<b>\$18,674,025</b>	<b>\$536,956</b>	<b>\$7,363,737</b>	<b>\$11,310,288</b>	<b>\$11,310,288</b>	<b>\$18,674,025</b>
<b>TOTALS</b>	<b>1, 2</b>	<b>\$98,040,000</b>	<b>\$6,175,004</b>	<b>\$57,528,296</b>	<b>\$40,511,705</b>	<b>\$30,075,277</b>	<b>\$87,603,572</b>

Category	Percentage
Percentage of Personal Services Budget Expended	63.2%
Percentage of Operating Expenses & Equipment Budget Expended	39.4%
<b>Percentage of Total Budget Expended</b>	<b>58.7%</b>
Percentage of Fiscal Year Completed	75.0%

#

**Footnotes**

- 1 Statewide employee bargaining contracts are negotiated with the Administration on a periodic basis. Changes to these agreements impact the Authority's budget and updates to the budget are reflected subsequently at the appropriate reporting time. In some instances, forecast can exceed budget due to timing but will ultimately be trued up once DOF approves the additional funding.
- 2 In March-24, various Transfer of Budget Allotments (TBA's) were completed to accommodate position reclasses and/or operating expenditures. These budget shifts result in a net-zero impact to the overall Administrative Budget.

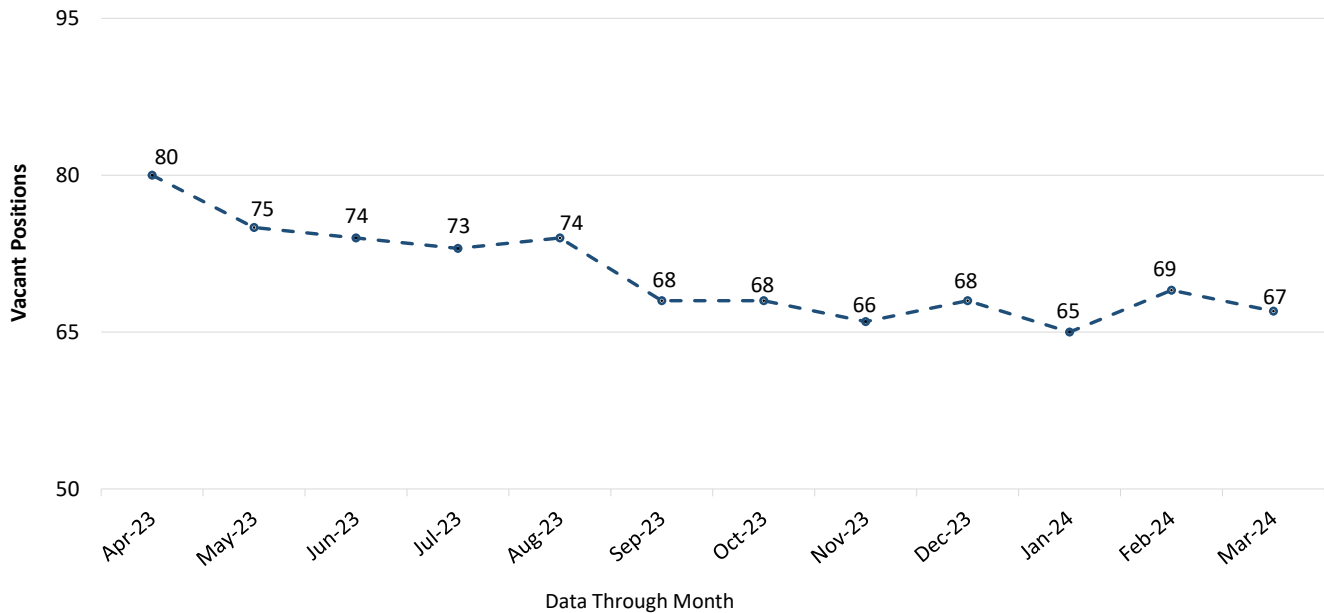
Data through March 31, 2024

Percentage of Fiscal Year Completed: 75.0%

**FY2023-24 Position Summary  
 All Offices**

All Offices	Notes	Total Authorized Positions	Total Filled Positions	Prior Month Vacant Positions	Prior Month Vacancy Rate	Total Vacant Positions	Total Vacancy Rate
Executive Office		9	8	1	11.1%	1	11.1%
Risk Management Office		6	5	1	16.7%	1	16.7%
Administration Office		52	45	7	13.5%	7	13.5%
Strategic Communications Office		14	13	1	7.1%	1	7.1%
Financial Office		59	55	5	8.5%	4	6.8%
Legal Office		13	11	2	15.4%	2	15.4%
Program Delivery Office		169	132	38	22.5%	37	21.9%
Northern California Region Office		8	8	0	0.0%	0	0.0%
Central Valley Region Office		8	7	1	12.5%	1	12.5%
Southern California Region Office		6	6	0	0.0%	0	0.0%
Audit Office		13	12	1	7.7%	1	7.7%
Legislative Affairs Office		3	3	0	0.0%	0	0.0%
Information Technology Office		69	57	12	17.4%	12	17.4%
<b>Total</b>	<b>3</b>	<b>429</b>	<b>362</b>	<b>69</b>	<b>16.1%</b>	<b>67</b>	<b>15.6%</b>

**Vacancies Trend**



#  
 3 This report reflects State employees only.

**Footnotes**

Data through March 31, 2024

Percentage of Fiscal Year Completed: 75.0%

FY2023-24 Vacancy Report  
 All Offices

Office	Notes	Total Vacant Positions
<b>Executive Office</b>		
Staff Services Manager I		1
<b>Executive Office Total</b>		<b>1</b>
<b>Risk Management Office</b>		
Supervising Transportation Engineer		1
<b>Risk Management Office Total</b>		<b>1</b>
<b>Administration Office</b>		
Staff Services Manager II (Supervisory)		1
Staff Services Manager I		2
Associate Governmental Program Analyst		1
Senior Personnel Specialist		1
Staff Services Analyst		1
Office Technician (Typing)		1
<b>Administration Office Total</b>		<b>7</b>
<b>Strategic Communications Office</b>		
Information Officer I (Specialist)		1
<b>Strategic Communications Office Total</b>		<b>1</b>
<b>Financial Office</b>		
Deputy Director of Business Analytics and Strategic Planning		1
Associate Accounting Analyst		2
Staff Services Analyst		1
<b>Financial Office Total</b>		<b>4</b>
<b>Legal Office</b>		
Attorney III		1
Staff Services Analyst		1
<b>Legal Office Total</b>		<b>2</b>
<b>Program Delivery Office</b>		
Director of Engineering		1
Director of Contracts Administration (C.E.A.)		1
Director of Program Safety and Security (C.E.A.) B		1
Deputy Director of Real Property (C.E.A.)		1
Deputy Director (C.E.A.) A		1
Deputy Director of Architecture (C.E.A.) B		1
Principal Transportation Engineer		4
Supervising Transportation Engineer		6
Senior Transportation Electrical Engineer		1
Senior Transportation Engineer		11
Transportation Engineer (Civil)		1
Senior Environmental Scientist (Supervisory)		1
Supervising Right of Way Agent		1
Associate Right of Way Agent		1
Supervising Environmental Planner		1
Staff Services Manager I		1
Structural Design Technician II		1
Associate Governmental Program Analyst		2
<b>Program Delivery Office Total</b>		<b>37</b>
<b>Central Valley Region Office</b>		
Associate Governmental Program Analyst		1
<b>Central Valley Region Office Total</b>		<b>1</b>
<b>Audit Office</b>		
Associate Management Auditor		1
<b>Audit Office Total</b>		<b>1</b>
<b>Information Technology Office</b>		
Information Technology Manager II		1
Information Technology Supervisor II		2
Information Technology Specialist II		1
Information Technology Specialist I		3
Information Technology Associate		4
Graphic Designer II		1
<b>Information Technology Office Total</b>		<b>12</b>
<b>Total Vacancies</b>	<b>3</b>	<b>67</b>

#

3 This report reflects State employees only.

Footnotes