

California High-Speed Rail Authority

Palmdale to Burbank Project Section

Final Environmental Impact Report/
Environmental Impact Statement

Appendix 3.7-D Jurisdictional Aquatic
Resources

April 2024



The environmental review, consultation, and other actions required by applicable federal environmental laws for this project are being or have been carried out by the State of California pursuant to 23 U.S.C. 327 and a Memorandum of Understanding dated July 23, 2019, and executed by the Federal Railroad Administration and the State of

This page intentionally left blank

TABLE OF CONTENTS

Figures

Figure 3.7-D-1 Waters of the U.S. and Waters of the State (Map 1 of 10)..... 1

Figure 3.7-D-2 Waters of the U.S. and Waters of the State (Map 2 of 10)..... 2

Figure 3.7-D-3 Waters of the U.S. and Waters of the State (Map 3 of 10)..... 3

Figure 3.7-D-4 Waters of the U.S. and Waters of the State (Map 4 of 10)..... 4

Figure 3.7-D-5 Waters of the U.S. and Waters of the State (Map 5 of 10)..... 5

Figure 3.7-D-6 Waters of the U.S. and Waters of the State (Map 6 of 10)..... 6

Figure 3.7-D-7 Waters of the U.S. and Waters of the State (Map 7 of 10)..... 7

Figure 3.7-D-8 Waters of the U.S. and Waters of the State (Map 8 of 10)..... 8

Figure 3.7-D-9 Waters of the U.S. and Waters of the State (Map 9 of 10)..... 9

Figure 3.7-D-10 Waters of the U.S. and Waters of the State (Map 10 of 10)..... 10

Figure 3.7-D-11 CDFW Regulated Areas (Map 1 of 10) 11

Figure 3.7-D-12 CDFW Regulated Areas (Map 2 of 10) 12

Figure 3.7-D-13 CDFW Regulated Areas (Map 3 of 10) 13

Figure 3.7-D-14 CDFW Regulated Areas (Map 4 of 10) 14

Figure 3.7-D-15 CDFW Regulated Areas (Map 5 of 10) 15

Figure 3.7-D-16 CDFW Regulated Areas (Map 6 of 10) 16

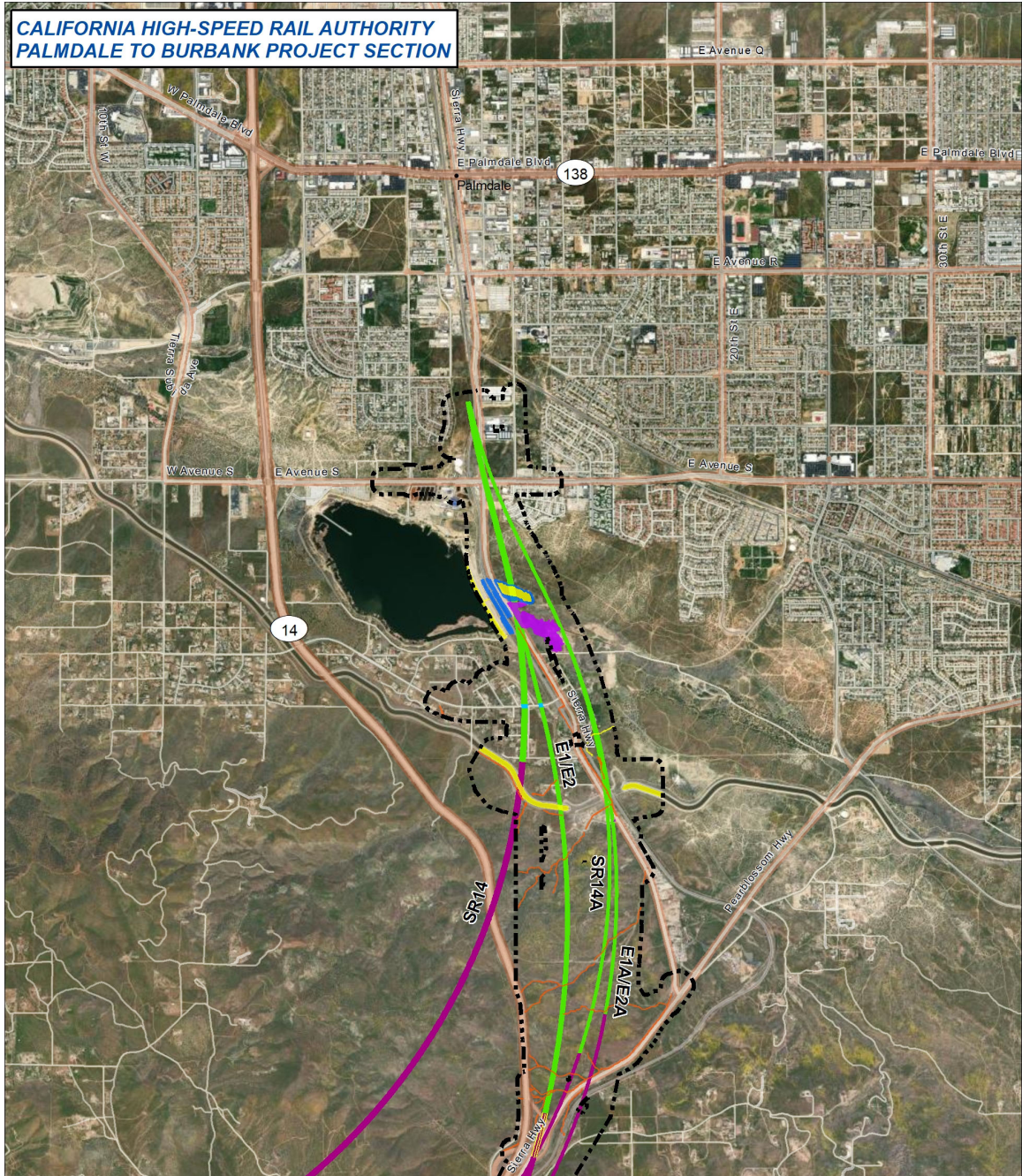
Figure 3.7-D-17 CDFW Regulated Areas (Map 7 of 10) 17

Figure 3.7-D-18 CDFW Regulated Areas (Map 8 of 10) 18

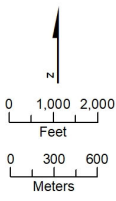
Figure 3.7-D-19 CDFW Regulated Areas (Map 9 of 10) 19

Figure 3.7-D-20 CDFW Regulated Areas (Map 10 of 10) 20

This page intentionally left blank



PRELIMINARY DRAFT/SUBJECT TO CHANGE - HSR ALIGNMENT IS NOT DETERMINED
 Source: ICF International
 Imagery Source: Esri



- | | |
|-----------------------|---|
| Alignment | Waters of the U.S./Waters of the State |
| — At Grade | --- Aquatic Resources Study Area |
| — Viaduct | ■ Wetland Waters of the U.S.* |
| — Retained Cut/Trench | ■ Wetland Waters of the State* |
| — Tunnel | ■ Non-wetland Waters of the U.S.* |
| | ■ Non-wetland Waters of the State* |
| | *Features are not drawn to scale |

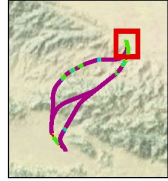


Figure 3.7-D-1 Waters of the U.S. and Waters of the State (Map 1 of 10)

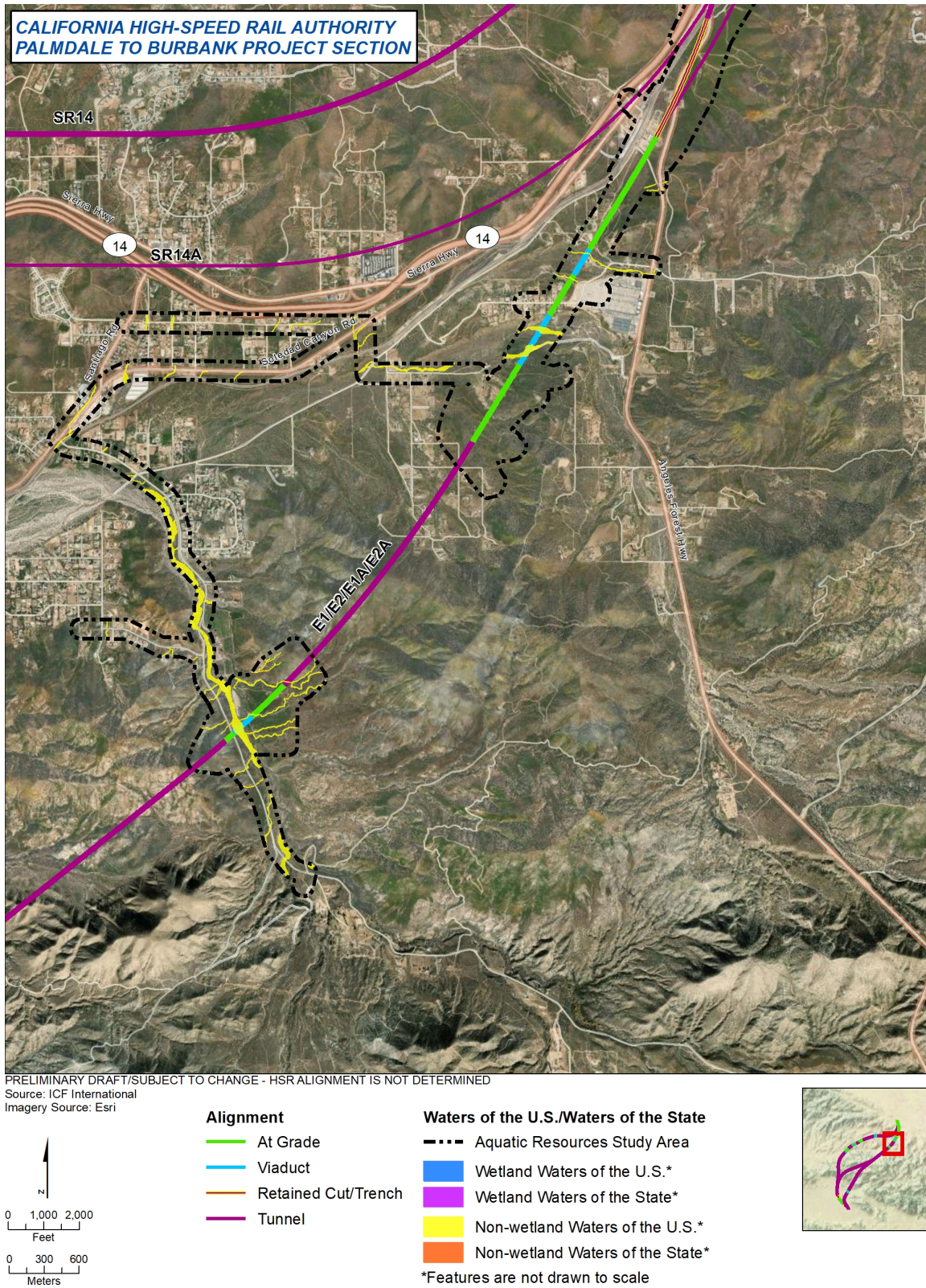


Figure 3.7-D-2 Waters of the U.S. and Waters of the State (Map 2 of 10)

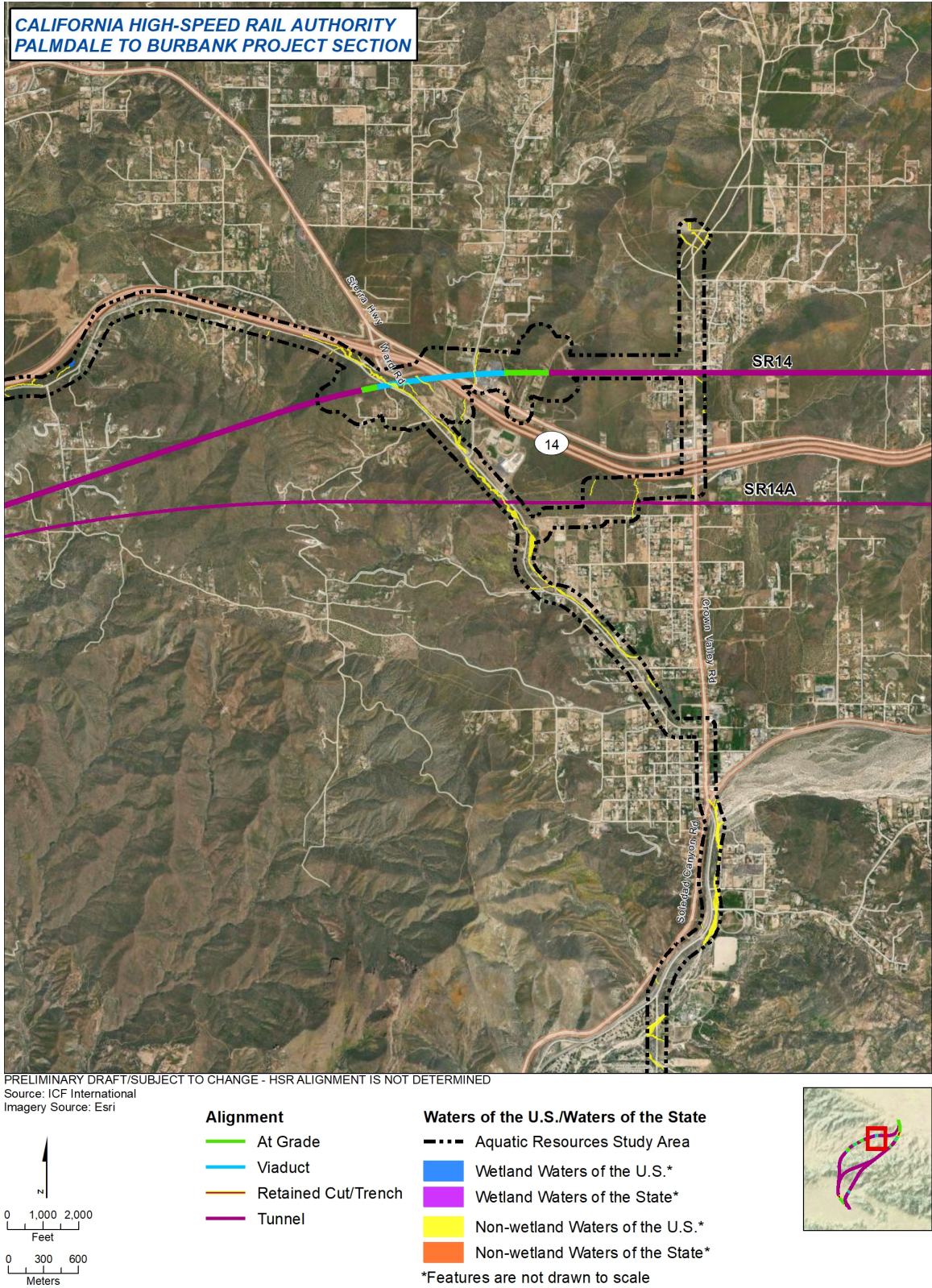


Figure 3.7-D-3 Waters of the U.S. and Waters of the State (Map 3 of 10)

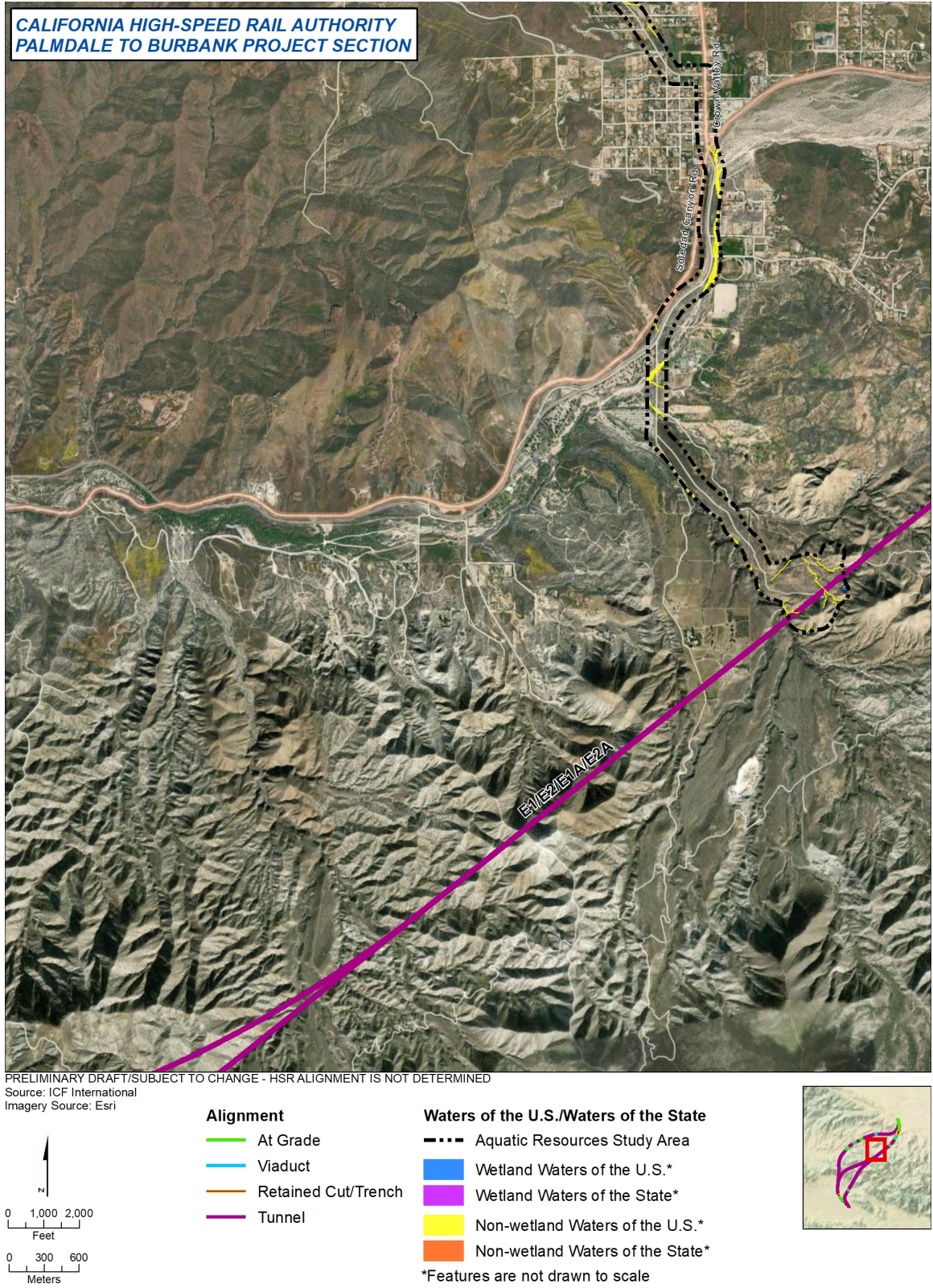


Figure 3.7-D-4 Waters of the U.S. and Waters of the State (Map 4 of 10)

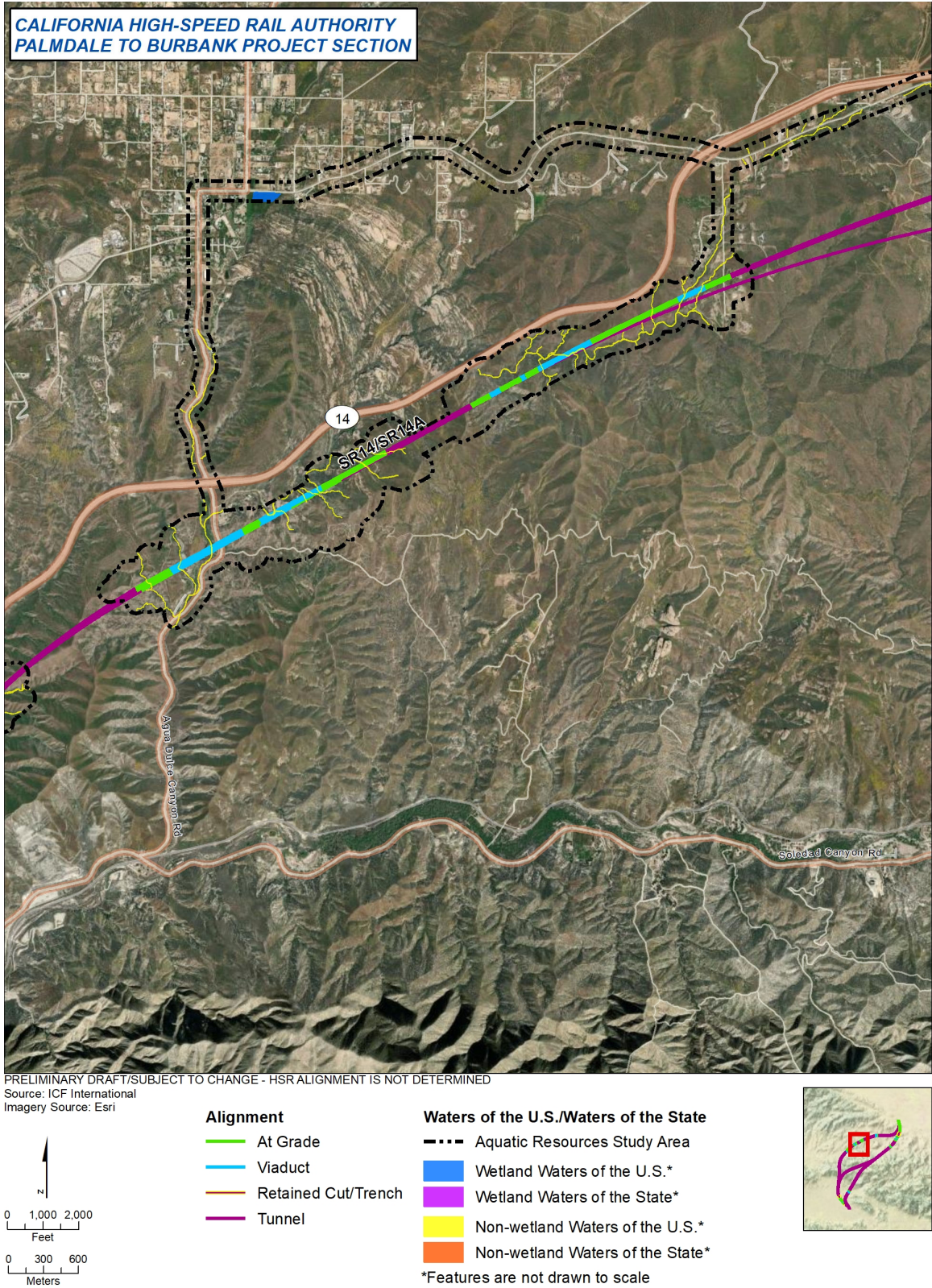


Figure 3.7-D-5 Waters of the U.S. and Waters of the State (Map 5 of 10)

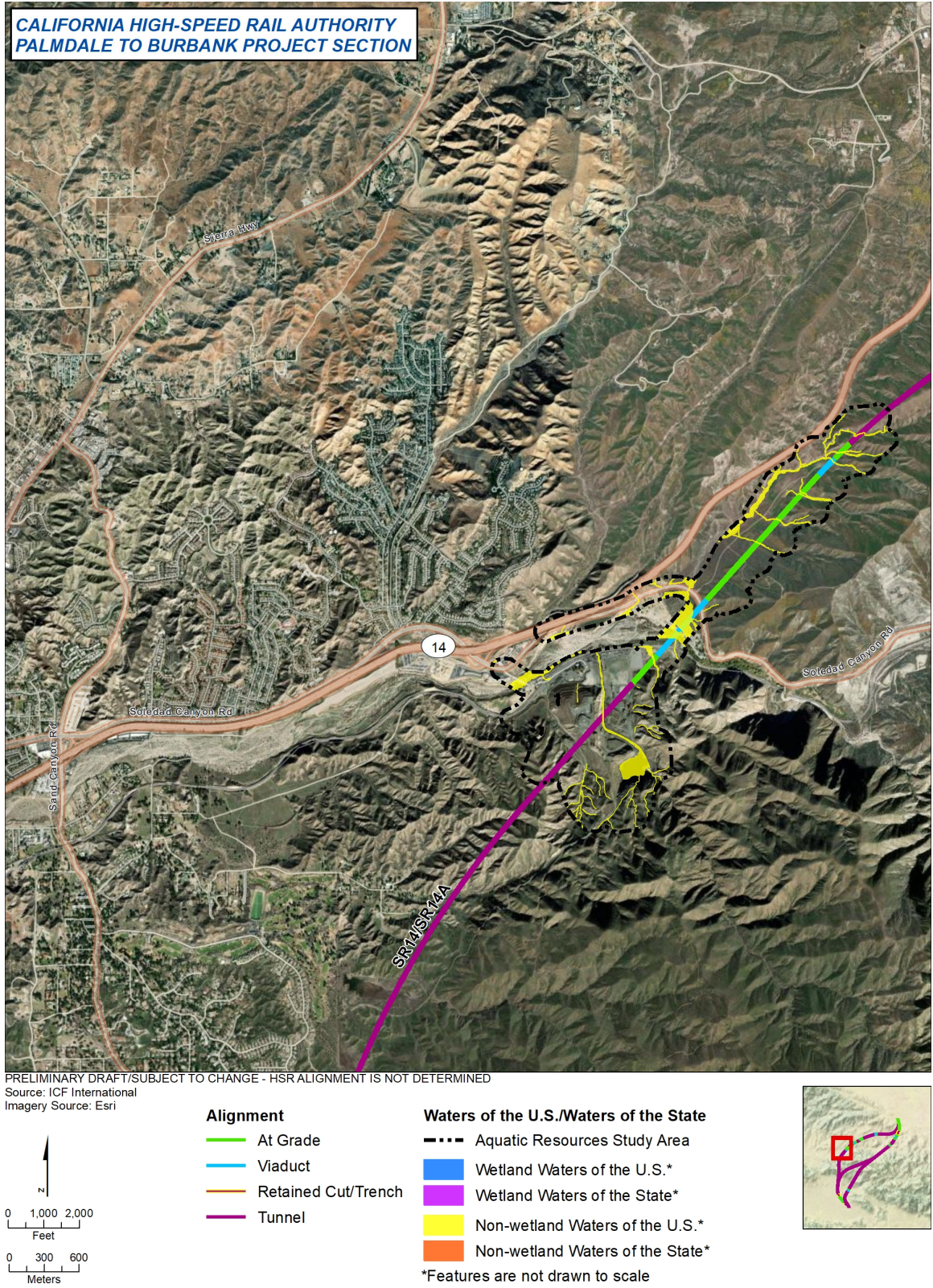


Figure 3.7-D-6 Waters of the U.S. and Waters of the State (Map 6 of 10)

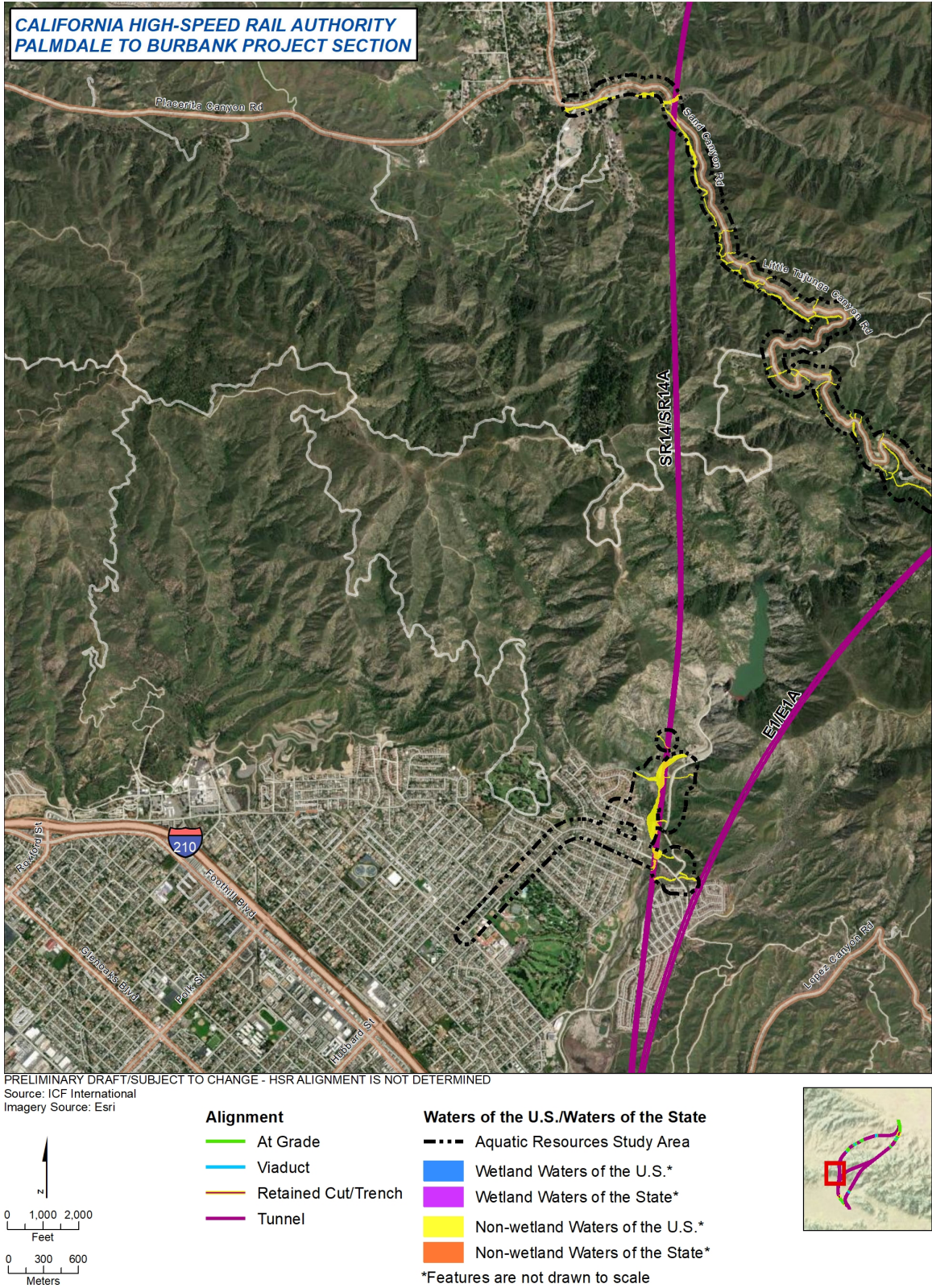


Figure 3.7-D-7 Waters of the U.S. and Waters of the State (Map 7 of 10)

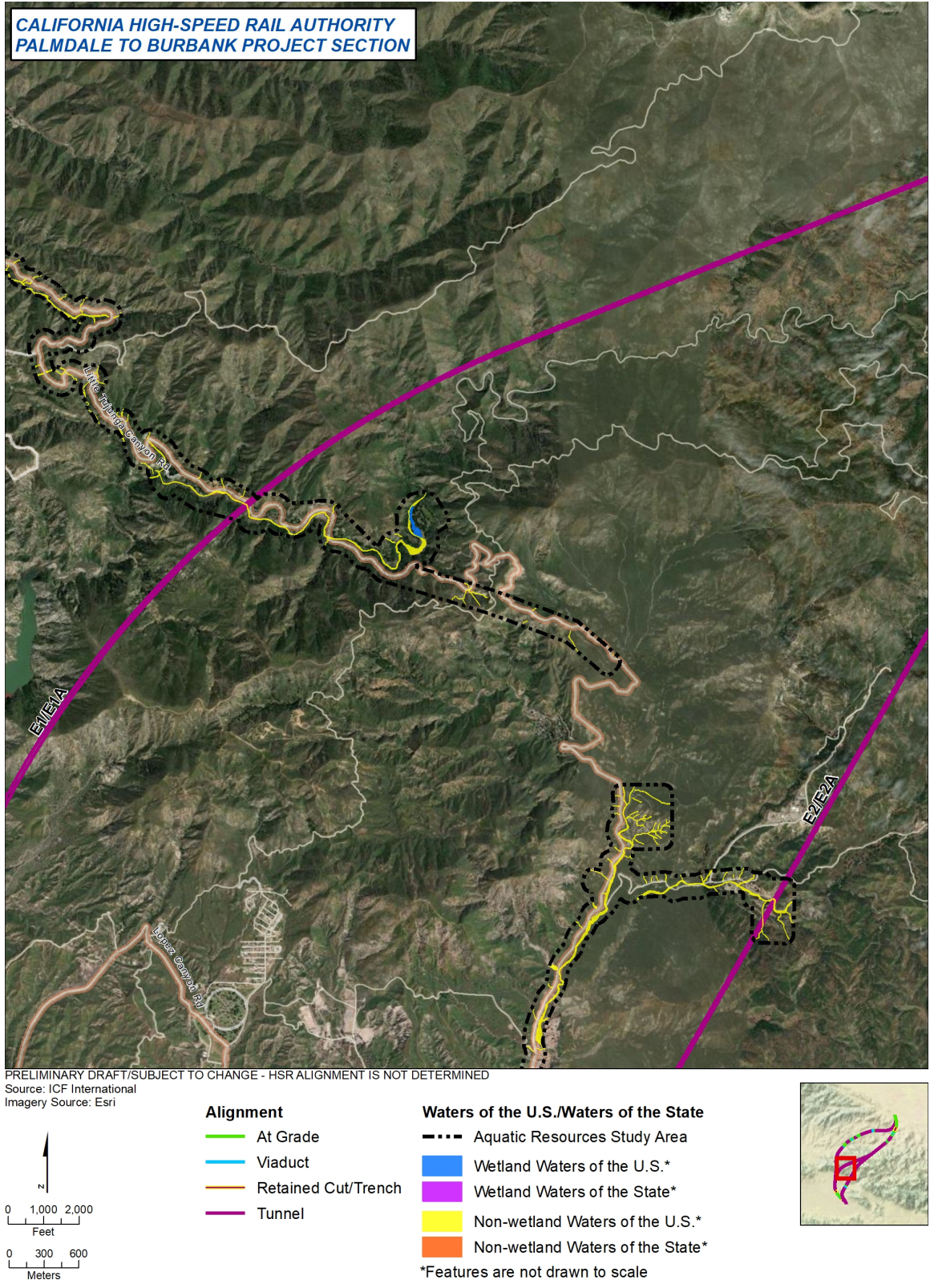


Figure 3.7-D-8 Waters of the U.S. and Waters of the State (Map 8 of 10)

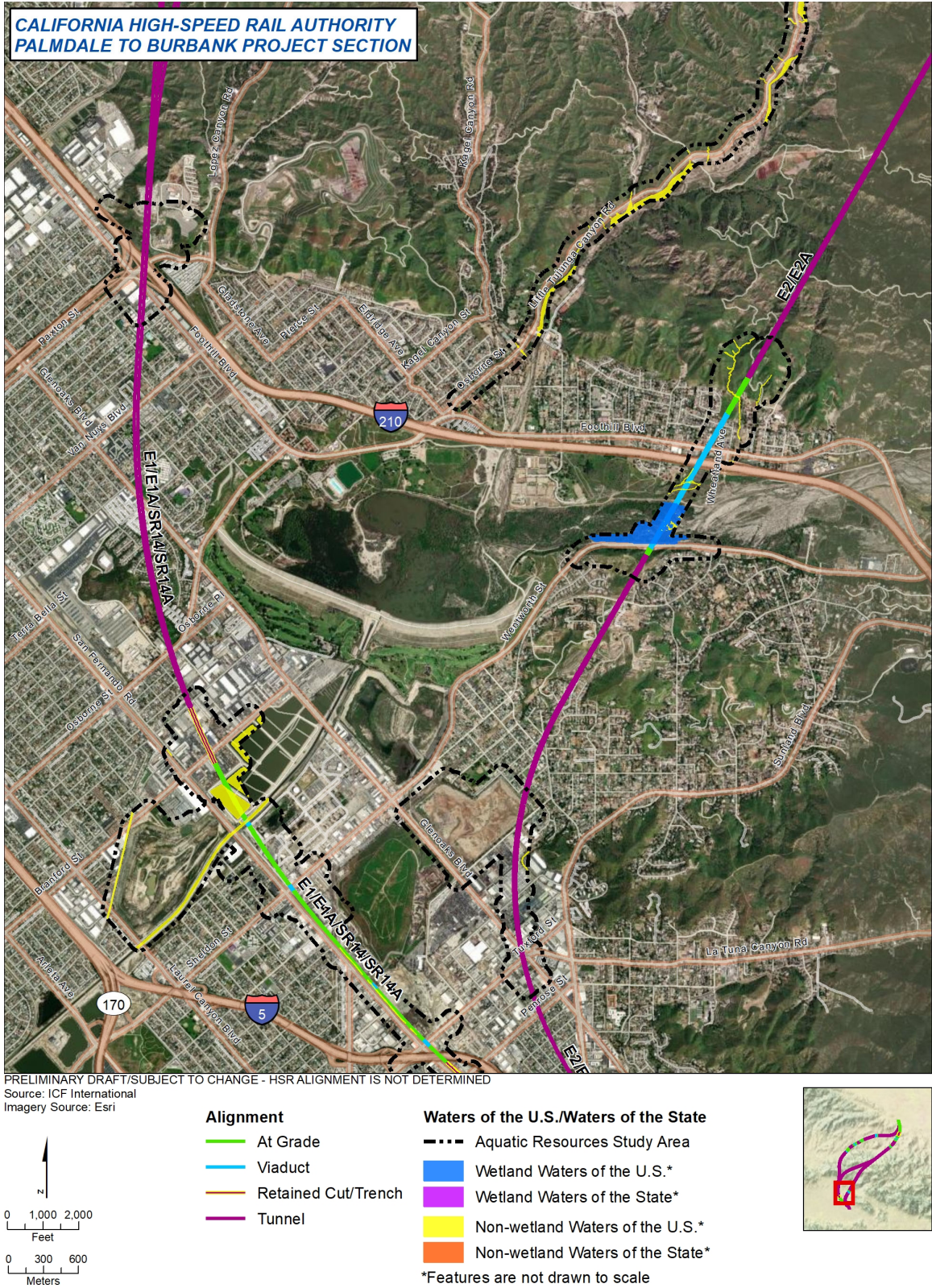
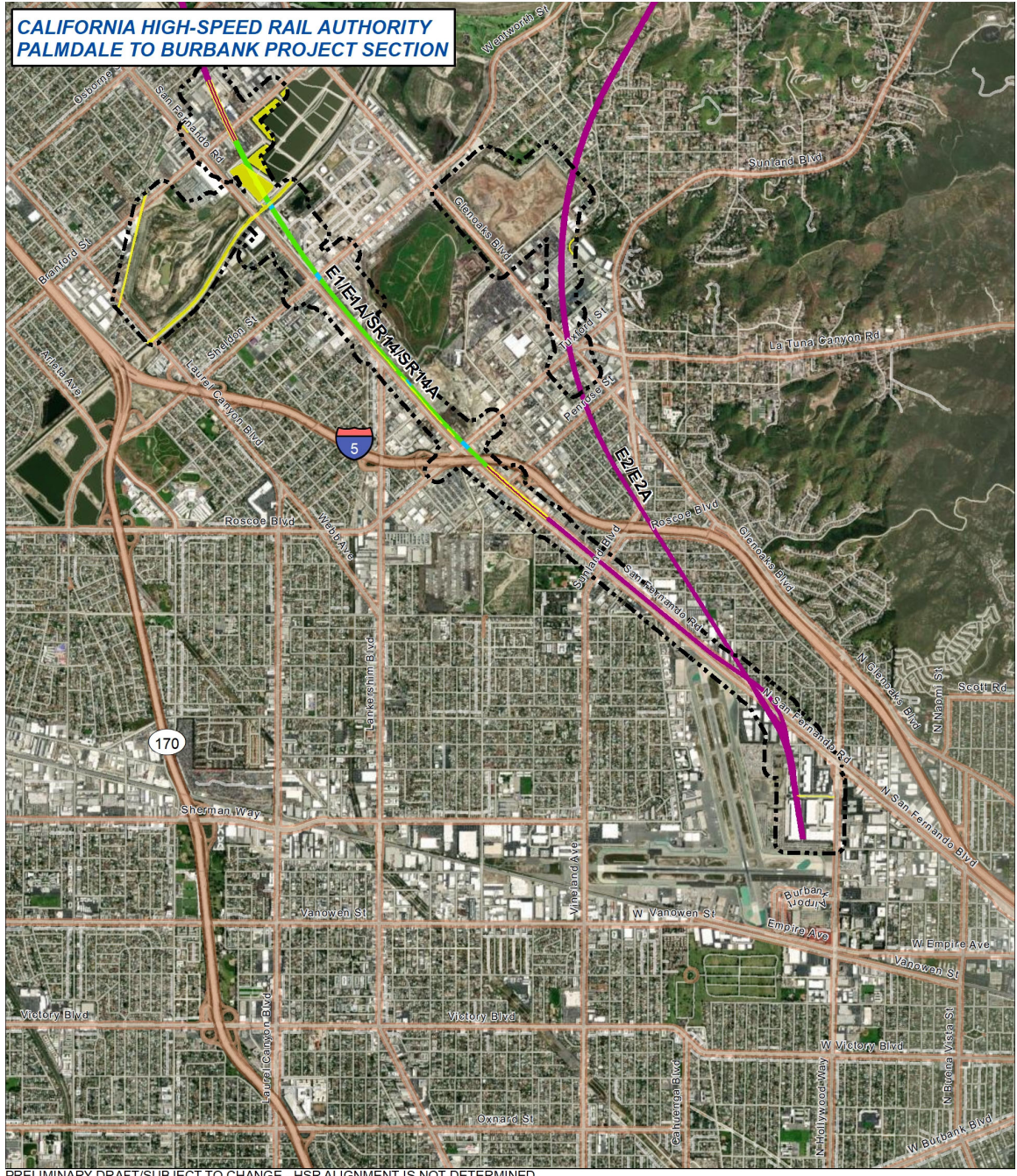


Figure 3.7-D-9 Waters of the U.S. and Waters of the State (Map 9 of 10)



PRELIMINARY DRAFT/SUBJECT TO CHANGE - HSR ALIGNMENT IS NOT DETERMINED
 Source: ICF International
 Imagery Source: Esri

	Alignment	Waters of the U.S./Waters of the State
	At Grade	Aquatic Resources Study Area
	Viaduct	Wetland Waters of the U.S.*
	Retained Cut/Trench	Wetland Waters of the State*
	Tunnel	Non-wetland Waters of the U.S.*
		Non-wetland Waters of the State*
		*Features are not drawn to scale

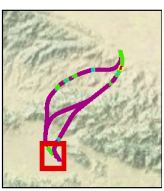


Figure 3.7-D-10 Waters of the U.S. and Waters of the State (Map 10 of 10)

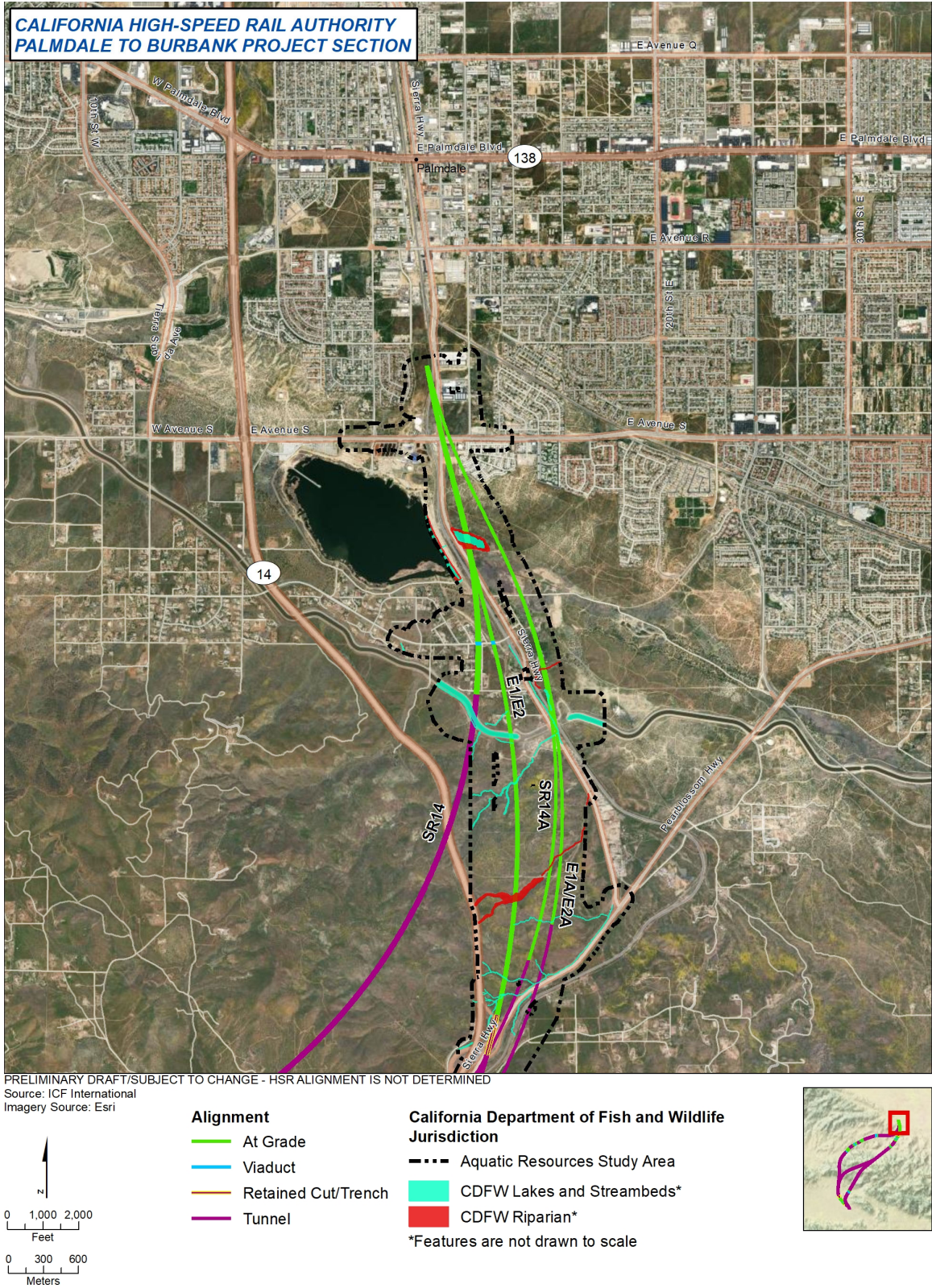
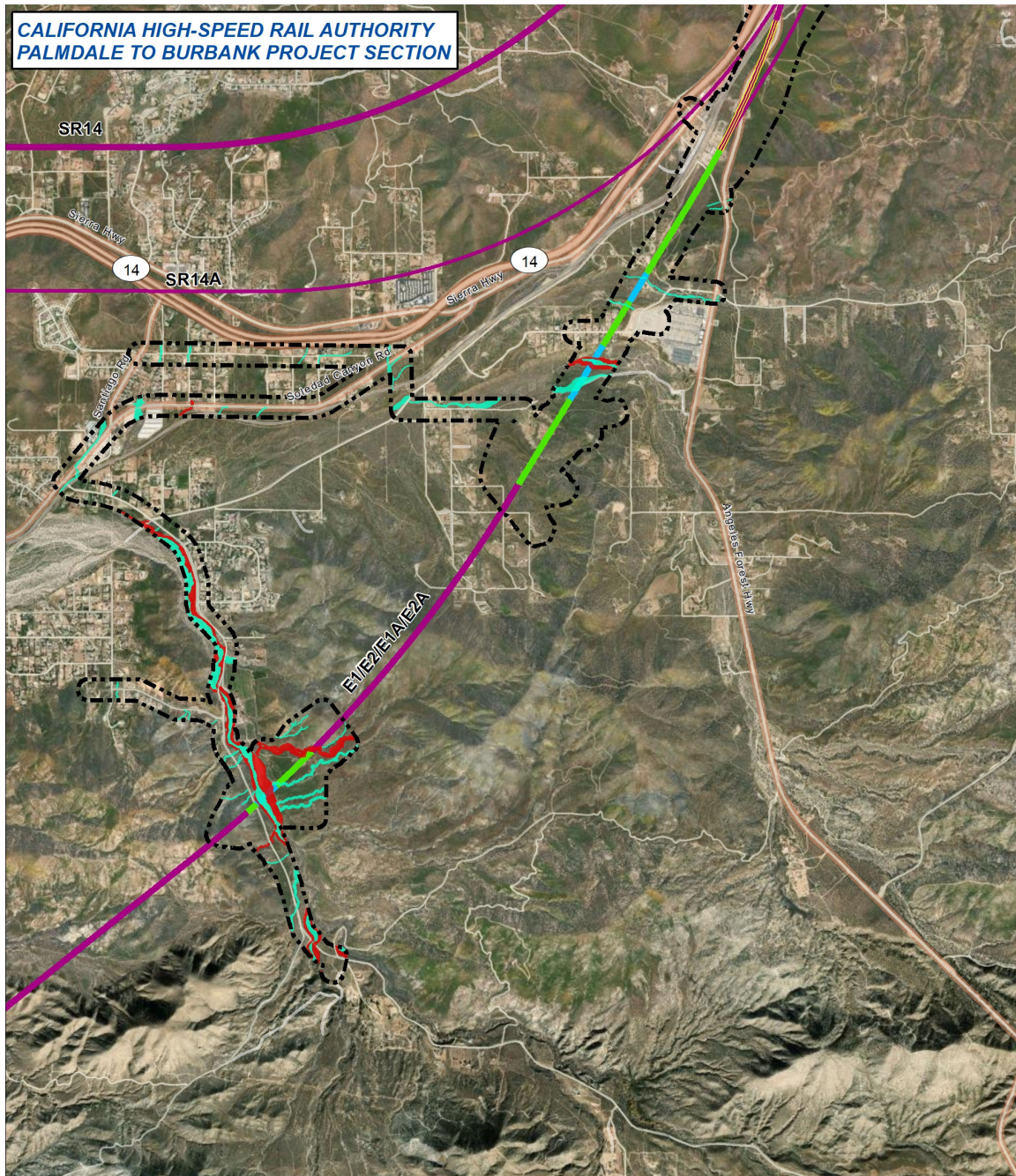
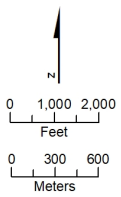


Figure 3.7-D-11 CDFW Regulated Areas (Map 1 of 10)



PRELIMINARY DRAFT/SUBJECT TO CHANGE - HSR ALIGNMENT IS NOT DETERMINED
 Source: ICF International
 Imagery Source: Esri



- | | |
|---|---|
| <p>Alignment</p> <ul style="list-style-type: none"> — At Grade — Viaduct — Retained Cut/Trench — Tunnel | <p>California Department of Fish and Wildlife Jurisdiction</p> <ul style="list-style-type: none"> Aquatic Resources Study Area CDFW Lakes and Streambeds* CDFW Riparian* <p>*Features are not drawn to scale</p> |
|---|---|

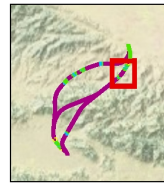


Figure 3.7-D-12 CDFW Regulated Areas (Map 2 of 10)

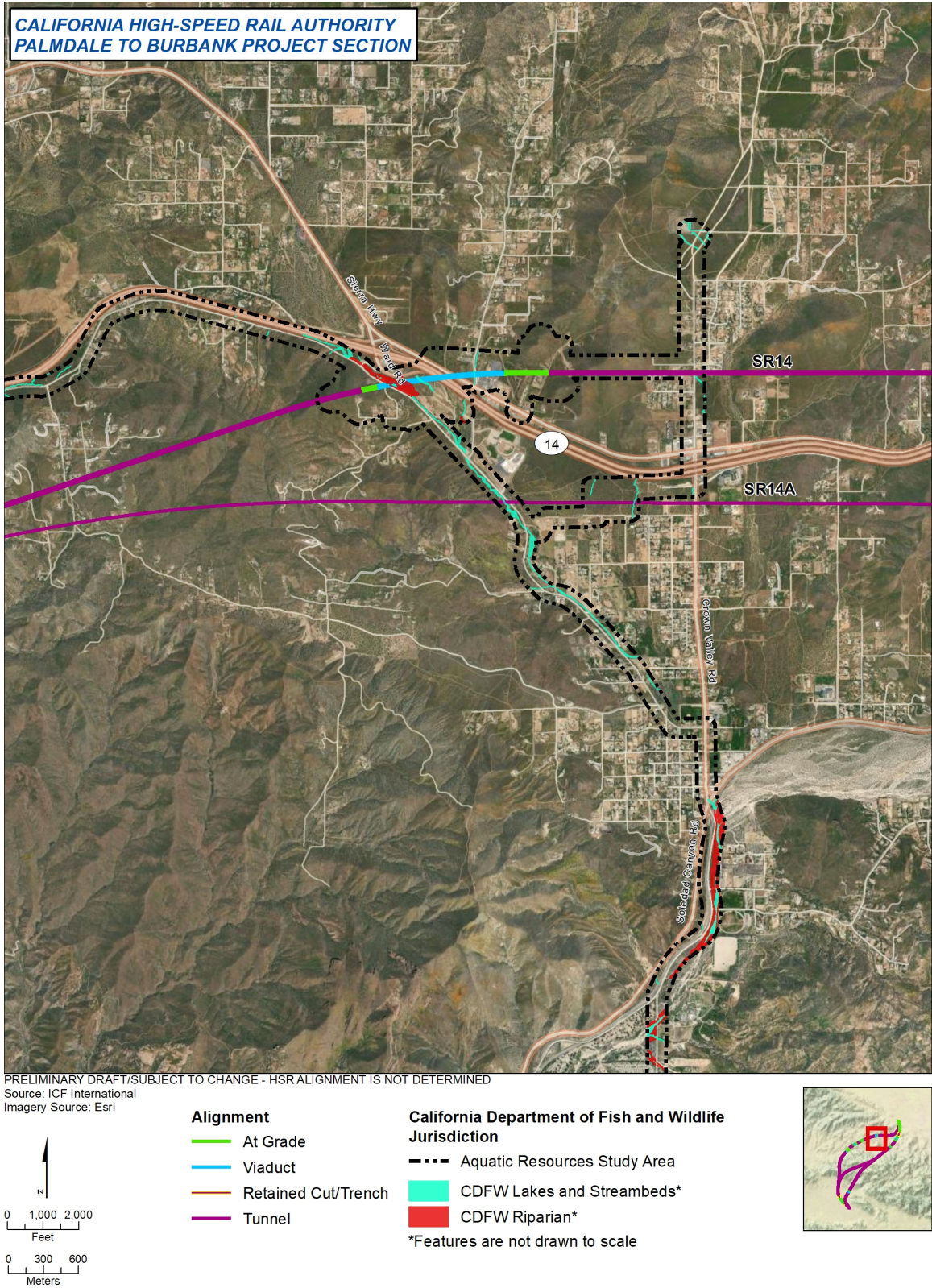


Figure 3.7-D-13 CDFW Regulated Areas (Map 3 of 10)



Figure 3.7-D-14 CDFW Regulated Areas (Map 4 of 10)

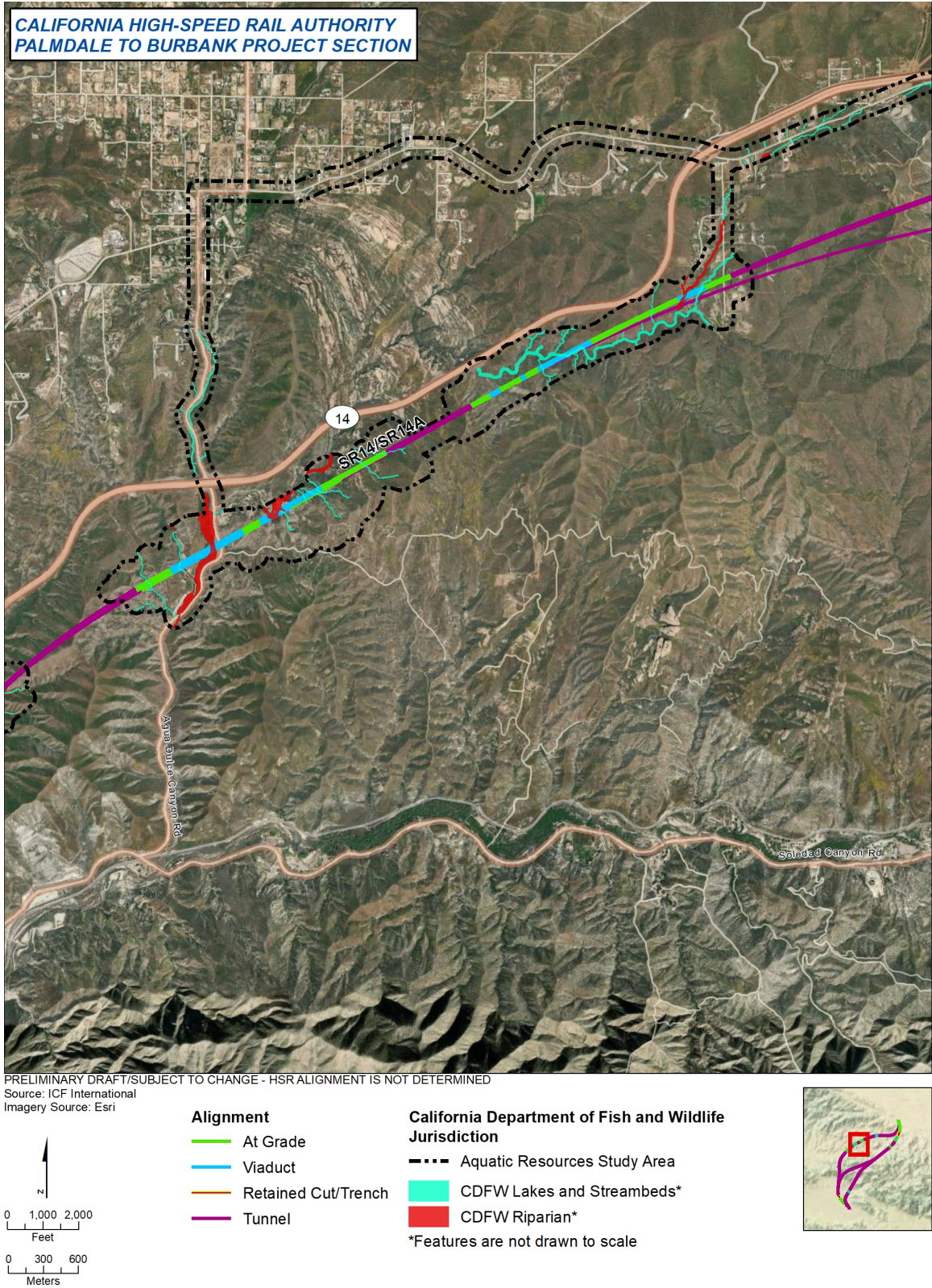


Figure 3.7-D-15 CDFW Regulated Areas (Map 5 of 10)

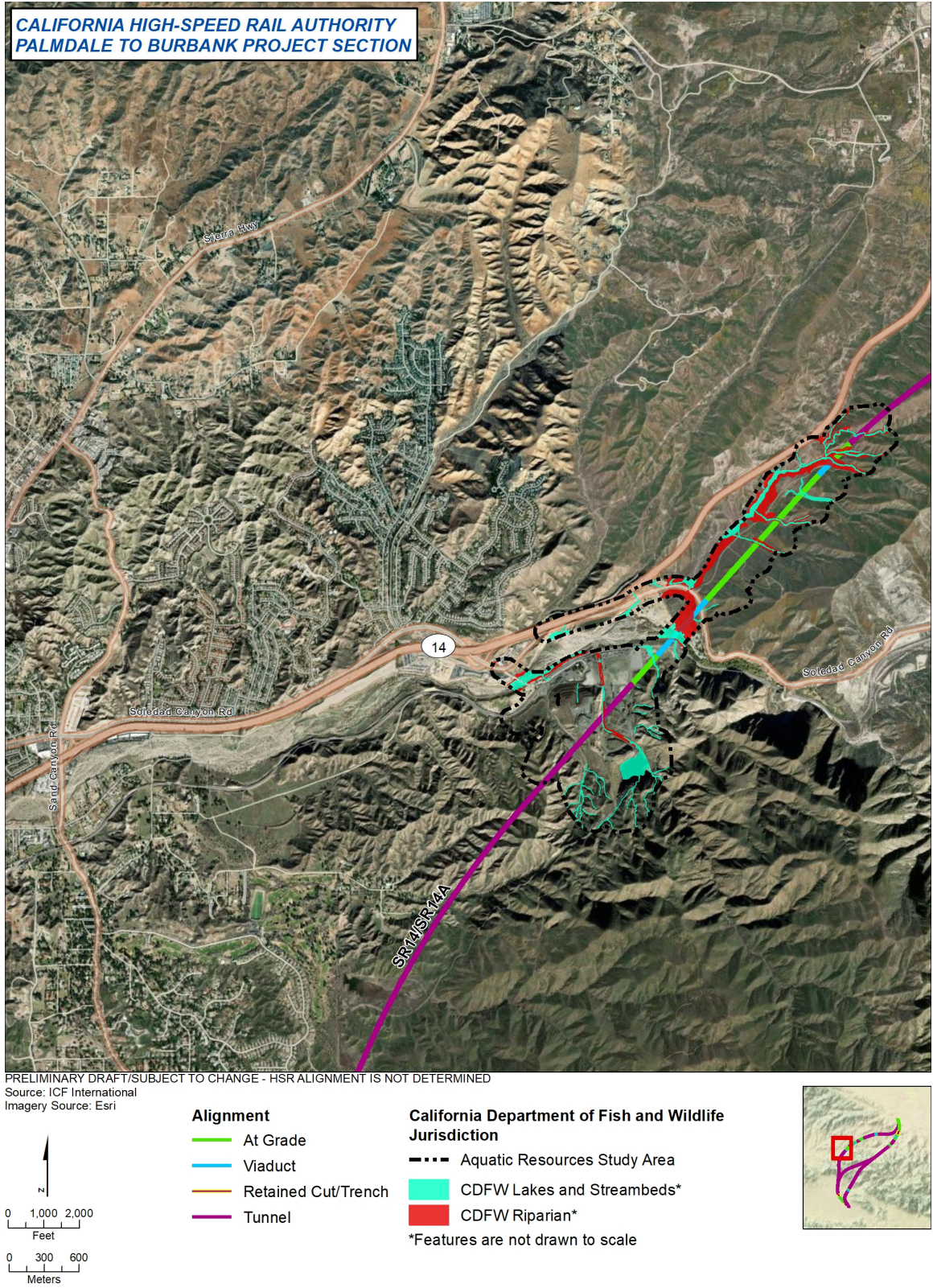


Figure 3.7-D-16 CDFW Regulated Areas (Map 6 of 10)

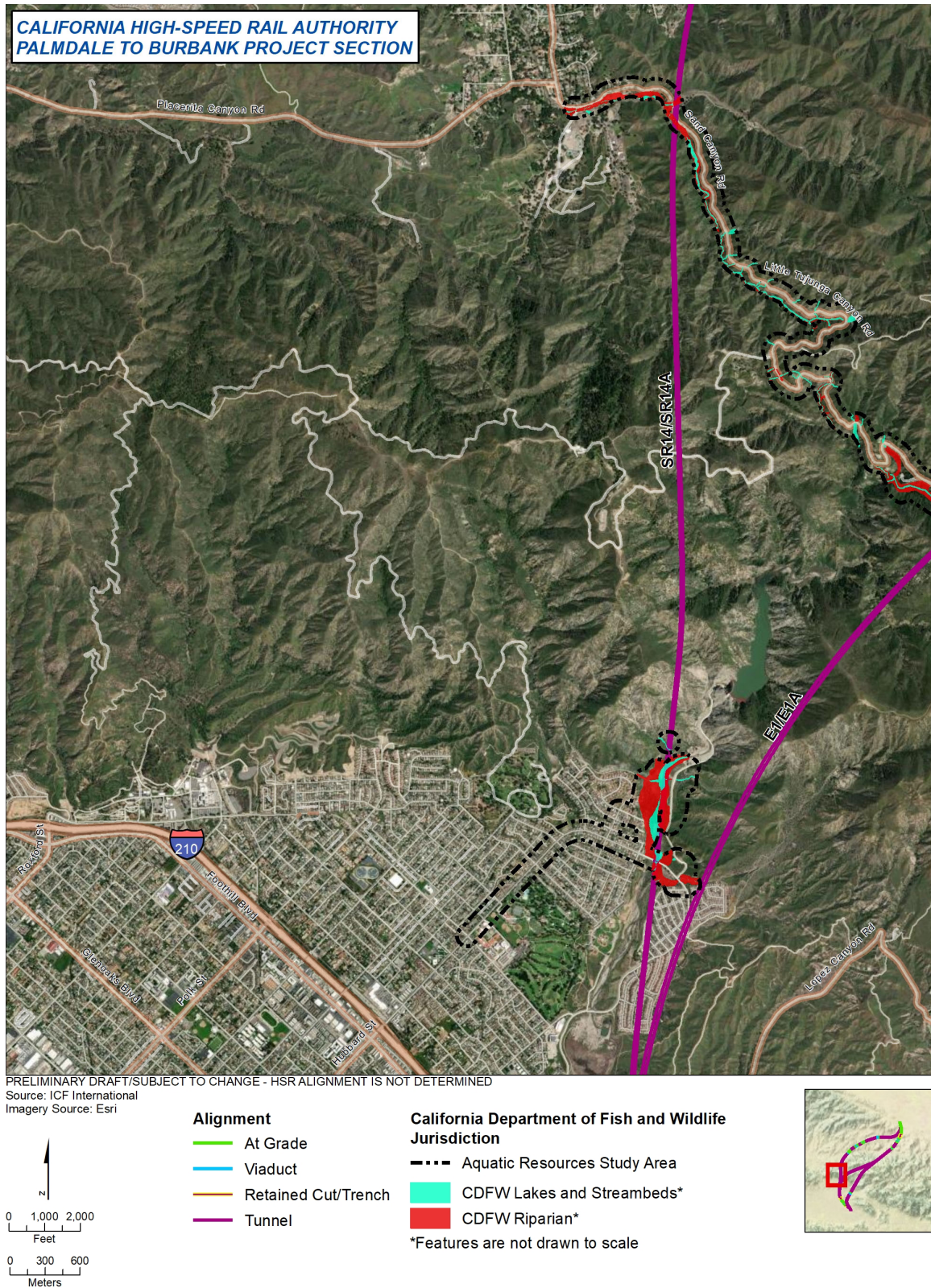


Figure 3.7-D-17 CDFW Regulated Areas (Map 7 of 10)

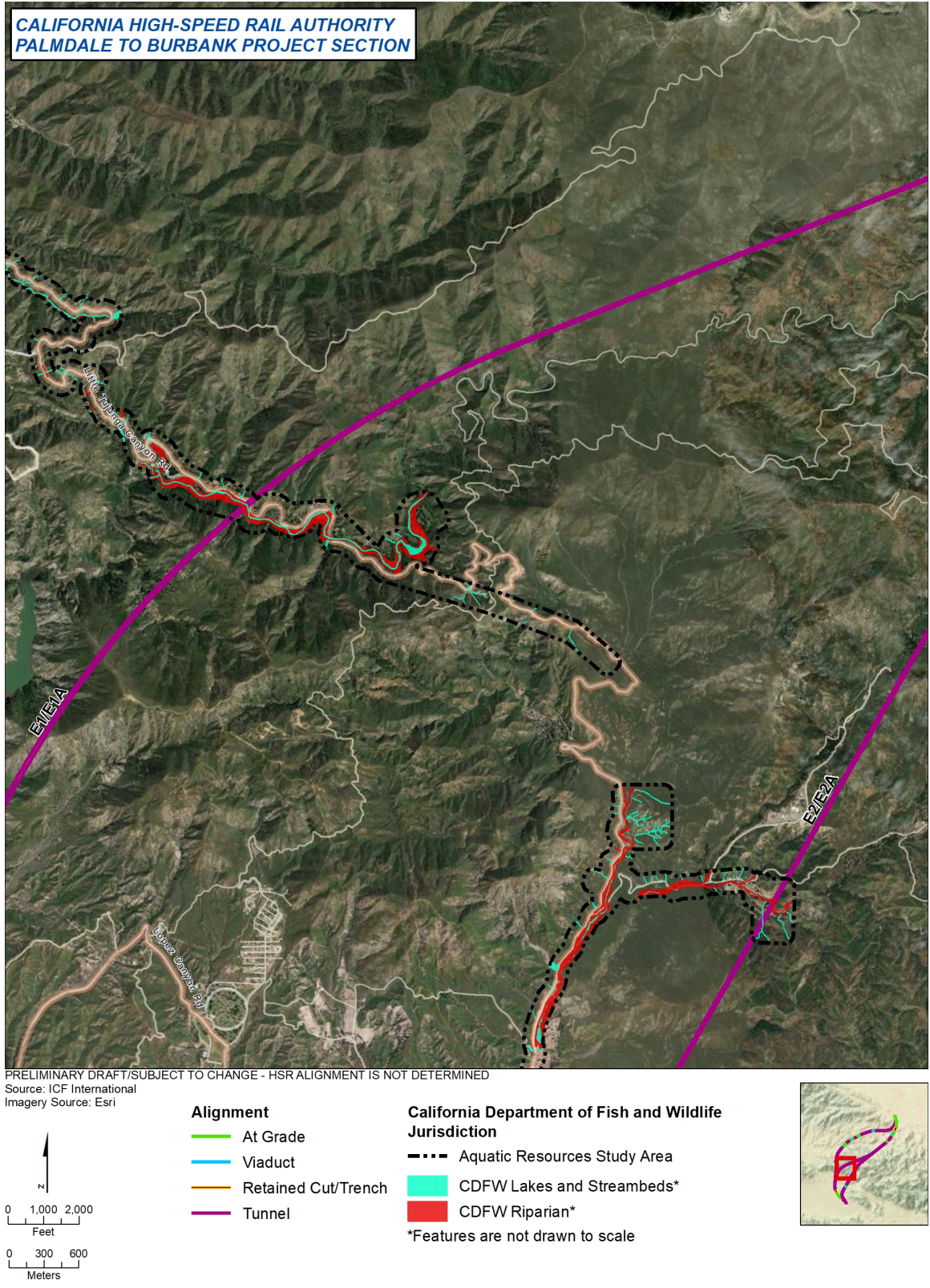


Figure 3.7-D-18 CDFW Regulated Areas (Map 8 of 10)

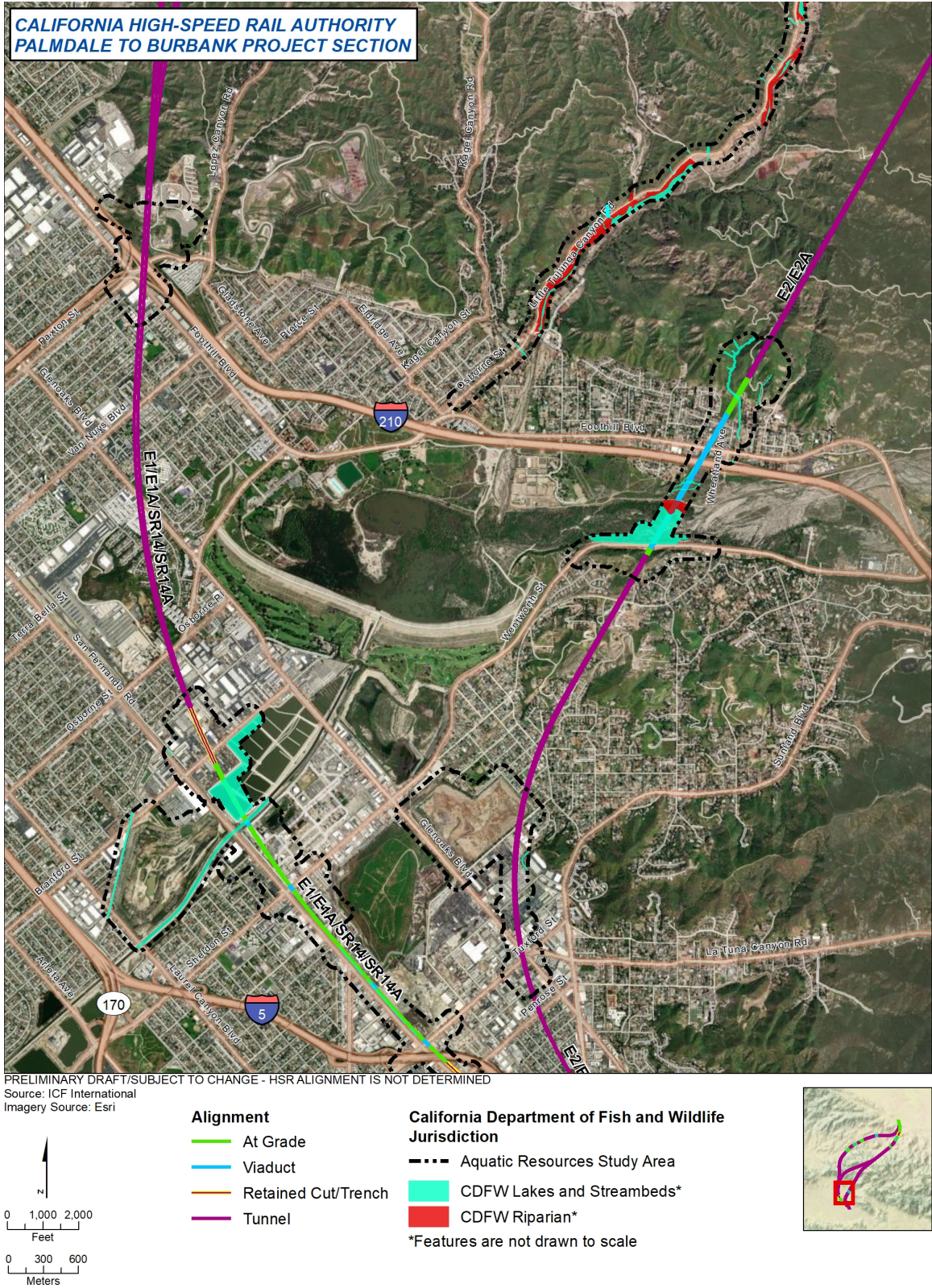


Figure 3.7-D-19 CDFW Regulated Areas (Map 9 of 10)

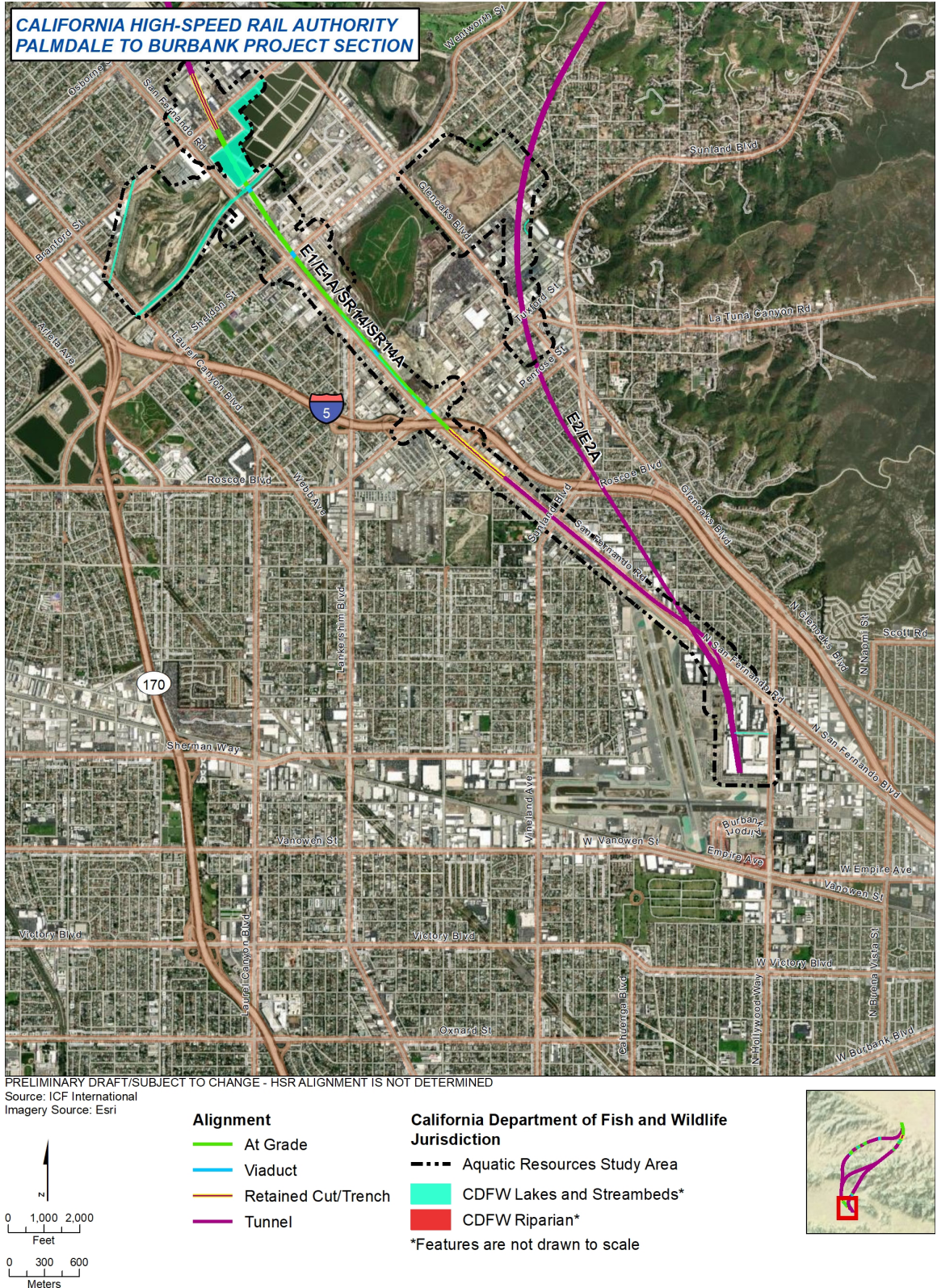


Figure 3.7-D-20 CDFW Regulated Areas (Map 10 of 10)