

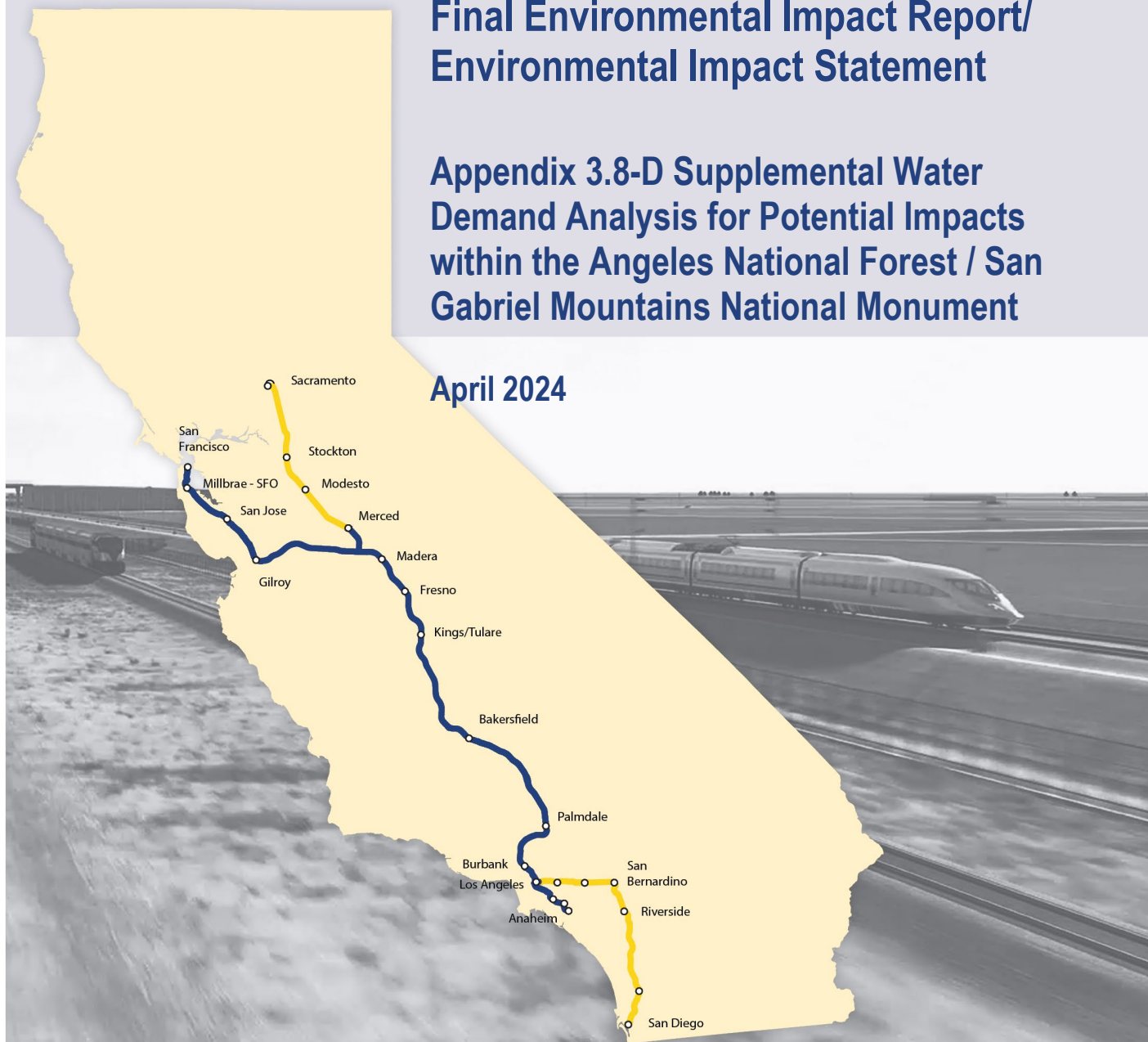
California High-Speed Rail Authority

Palmdale to Burbank Project Section

Final Environmental Impact Report/
Environmental Impact Statement

Appendix 3.8-D Supplemental Water
Demand Analysis for Potential Impacts
within the Angeles National Forest / San
Gabriel Mountains National Monument

April 2024



The environmental review, consultation, and other actions required by applicable federal environmental laws for this project are being or have been carried out by the State of California pursuant to 23 U.S.C. 327 and a Memorandum of Understanding dated July 23, 2019, and executed by the Federal Railroad Administration and the State of California.

This page intentionally left blank

TABLE OF CONTENTS

1	INTRODUCTION	1
2	SUPPLEMENTAL WATER DEMAND ANALYSIS	3
2.1	Use of Regional Scientific Data	3
2.2	Methods	3
3	POTENTIAL SOURCES OF SUPPLEMENTAL WATER	15
3.1	Existing Regional Water Supply Infrastructure and Facilities	15
3.2	Recycled Construction Water	18
3.3	Dedicated Water Supply Wells	19
4	ACCESS AND INFRASTRUCTURE FOR CONVEYANCE AND TRANSPORT OF SUPPLEMENTAL WATER	21
5	REFERENCES	23

Tables

Table 1	Annual Precipitation at Big Tujunga Dam and Estimated Transpiration Rates of Oak Woodland.....	8
Table 2	Estimated Number of Gallons of Water per Day for Each Subwatershed and For Each Month – High Risk Areas E1/E1A-4	10
Table 3	Estimated Number of Gallons of Water per Day for Each Subwatershed and For Each Month – High Risk Area Refined SR14/SR14A-4.....	11
Table 4	Estimated Water Demand for Supplemental Water at Three High Risk Areas within the Angeles National Forest	13
Table 5	Water Distributors and Suppliers in the Central Subsection and Maintenance Facility Resource Study Area.....	16
Table 6	Estimated Construction Phase Water Demand Summary – Central Subsection and Maintenance Facility area.....	18
Table 7	Risk Areas and Associated Groundwater Basins	19
Table 8	Water Truck Needs and Accessibility for Example Risk Areas	22

Figure

Figure 3.8-D-1	Subwatershed Impacts – High Risk Areas Refined SR14/SR14A-4	5
Figure 3.8-D-2	Subwatershed Impacts – High Risk Areas E1/E1A-4	6
Figure 3.8-D-3	Subwatershed Impacts – High Risk Areas E2/E2A-4	7
Figure 3.8-D-4	High Risk Areas	14

ACRONYMS AND ABBREVIATIONS

AMMP	Adaptive Management and Monitoring Plan
ANF	Angeles National Forest
Authority	California High Speed Rail Authority
SGMNM	San Gabriel Mountains National Monument

1 INTRODUCTION

Since publication of the Palmdale to Burbank Project Section Draft Environmental Impact Report/Environmental Impact Statement (Draft EIR/EIS), Appendix 3.8-D has been updated to include additional information about the High Risk Area for the Refined SR14 and SR14A Build Alternatives (High Risk Areas Refined SR14/SR14A-4). Additionally, a map of High Risk Areas for the E2 and E2A Build Alternatives was added to Section 2.2 Methods.

The California High Speed Rail Authority (Authority) will implement an Adaptive Management and Monitoring Plan (AMMP) pursuant to mitigation measure HYD-MM#4 to address certain hydrologic impacts that could occur within the Angeles National Forest (ANF), including the San Gabriel Mountains National Monument (SGMNM). The purpose of the AMMP is to detect and respond to adverse effects on subsurface and surface water resources and associated habitat within the ANF caused by tunnel construction activities associated with the project. The AMMP is set out in Appendix 3.8-C. This Supplemental Water Demand Analysis discusses the options, logistics, and feasibility of implementing the response actions that may be implemented in accordance with the AMMP. Specifically, this analysis describes the methodology used to estimate potential remedial water needs and discusses various scenarios that would necessitate that supplemental water, the potential sources of that supplemental water, and the logistical considerations regarding the conveyance and delivery of that supplemental water.

As shown in Table 7, towards the end of this Appendix, the Refined SR14 and SR14A Build Alternatives would cross one High Risk Area; the E1 and E1A Build Alternatives would cross two High Risk Areas; and the E2 and E2A Build Alternatives would cross six High Risk Areas. For purposes of evaluating the options, logistics, and feasibility of implementing the response actions that may be implemented in accordance with the AMMP, three High Risk areas were selected, one each along the Refined SR14/SR14A alignment alternatives, E1/E1A alignment alternatives and E2/E2A alignment alternatives. Risk Areas are defined in Chapter 3.8, Table 3.8-2, of the Final EIR/EIS. Each Risk Area (regardless of it being low, medium, or high risk) has been given a number. Throughout this Appendix, the Authority will make reference to Refined SR14/SR14A-4; E1/E1A-4; and E2/E2A-4, which are the three High Risk Areas selected for this evaluation. The number “4” represents the risk area number for the Build Alternative.

This page is intentionally left blank

2 SUPPLEMENTAL WATER DEMAND ANALYSIS

As discussed in the AMMP (Appendix 3.8-C), an approach and methods have been developed for determining water requirements to potentially sustain surface water resources and associated habitat that are adversely affected by changes to the quantity and availability of water resources caused by tunnel construction.

2.1 Use of Regional Scientific Data

Subwatersheds for the High Risk areas identified for this analysis were delineated and the acreages of the vegetation communities within those subwatersheds were identified and quantified using GIS. Available literature was reviewed to estimate the transpiration rates of the identified vegetation communities in similar arid southwest communities. Transpiration is the process of water vapor loss through the leaves that allows the plant to absorb water from the soil. The transpiration rate is the amount of water loss/uptake as a percentage of available water. Where such studies were not available, studies on other vegetation communities whose conditions were expected to be similar and that align with the conditions in the Risk Areas were used. This information was used to approximate community transpiration rates for those vegetation communities within Risk Areas as a percentage of annual precipitation. Average monthly rainfall totals were identified using data from weather stations closest to the Risk Areas, and average monthly and daily transpiration rates were established for the vegetation community. A conservative value for the estimated water demand in acre-feet per year was calculated for the Risk Area, which allowed for a determination of the potential volume of supplemental water that may be needed for response actions in the case of identified effects on vegetation communities.

2.2 Methods

1. Subwatersheds within the High Risk area identified for this analysis and the vegetation communities within each subwatershed of the High Risk area were identified (Figure 3.8-D-1, Figure 3.8-D-2, and Figure 3.8-D-3), and the acreages of each vegetation community per subwatershed were calculated using GIS.
2. The oak woodland and montane hardwood-conifer communities were the focus of the analysis, as those communities would most likely be affected by disruption in groundwater availability. The other native community—mixed chaparral—is more drought-tolerant than the two woodland communities and would not be as affected by disruption in groundwater availability.
3. A search was conducted for transpiration rate studies conducted for southern California vegetation communities similar to those that occur in the project alignment, but relevant information was not available. One paper by Folliott et al. (2008), “Transpiration of Oak Trees in the Oak Savannahs of the Southwest Borderlands Region,” provided information for a study of transpiration rates for mature oak woodlands that was conducted in southwestern New Mexico, an area that generally aligned with the conditions in the Risk Area. This information was used to approximate the oak woodland and montane hardwood-conifer community transpiration rates in the Risk Area, which are expected to be the most sensitive to precipitation levels of the vegetation communities identified within this Risk Area, further described below. Folliott et al. found that transpiration rates of mature oak woodland communities are approximately 50 percent of annual precipitation.
4. Information regarding average monthly rainfall totals for between 1932 and 2016 in the Big Tujunga Dam (closest weather station to the High Risk Area) was collected.
 - a. Annual precipitation at Big Tujunga Dam = 26.73 inches.

- b. Using the monthly rainfall totals and the transpiration rate of oak woodland, the estimated transpiration amounts of oak woodland and montane hardwood-conifer will be 13.36 inches per year (50 percent of annual precipitation). From this, the daily transpiration rates were also calculated, shown in Table 1.
- c. Table 1 breaks down the rainfall amounts per month, transpiration rates per month, and transpiration amounts per day (in inches).

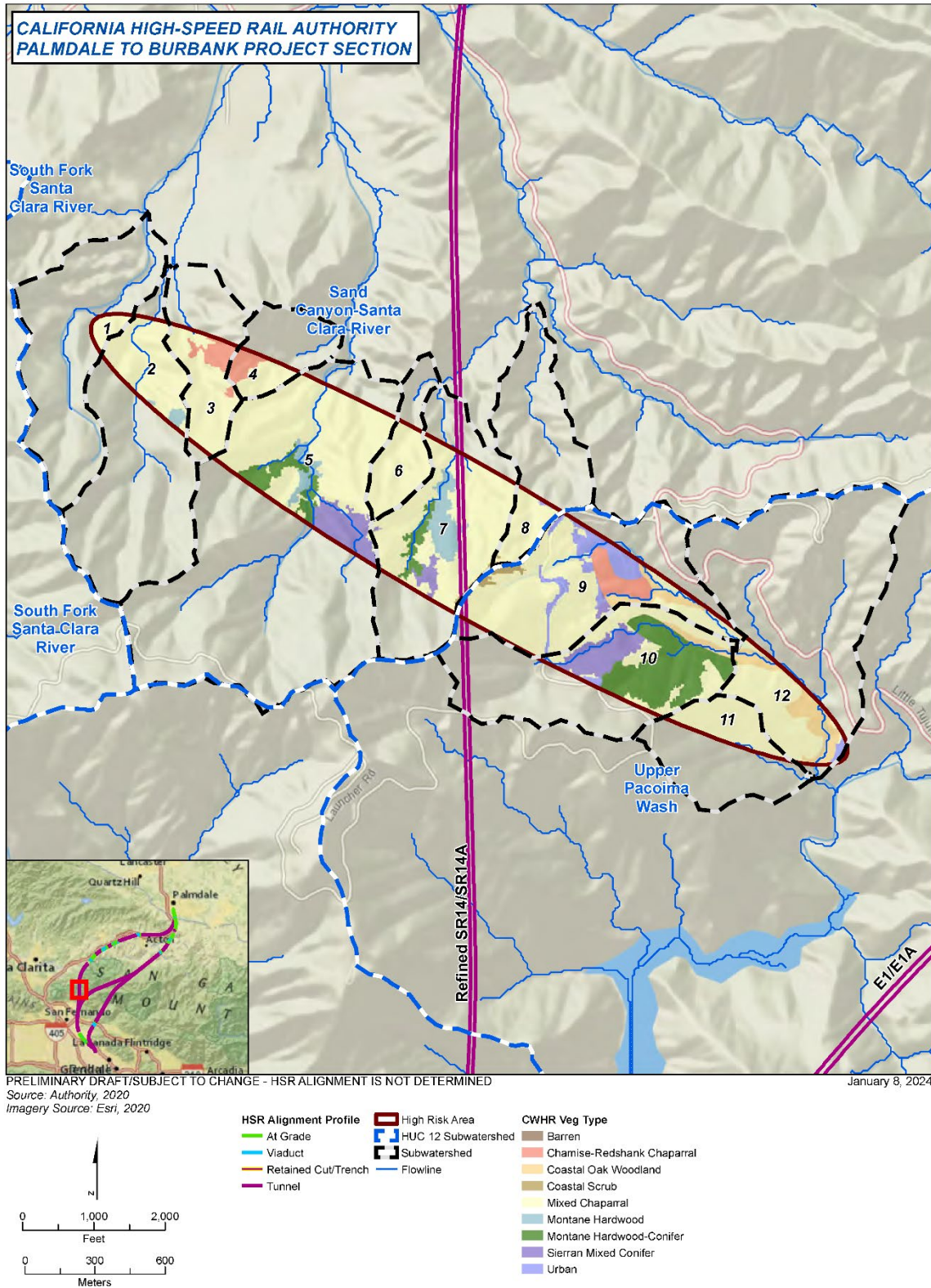


Figure 3.8-D-1 Subwatershed Impacts – High Risk Areas Refined SR14/SR14A-4

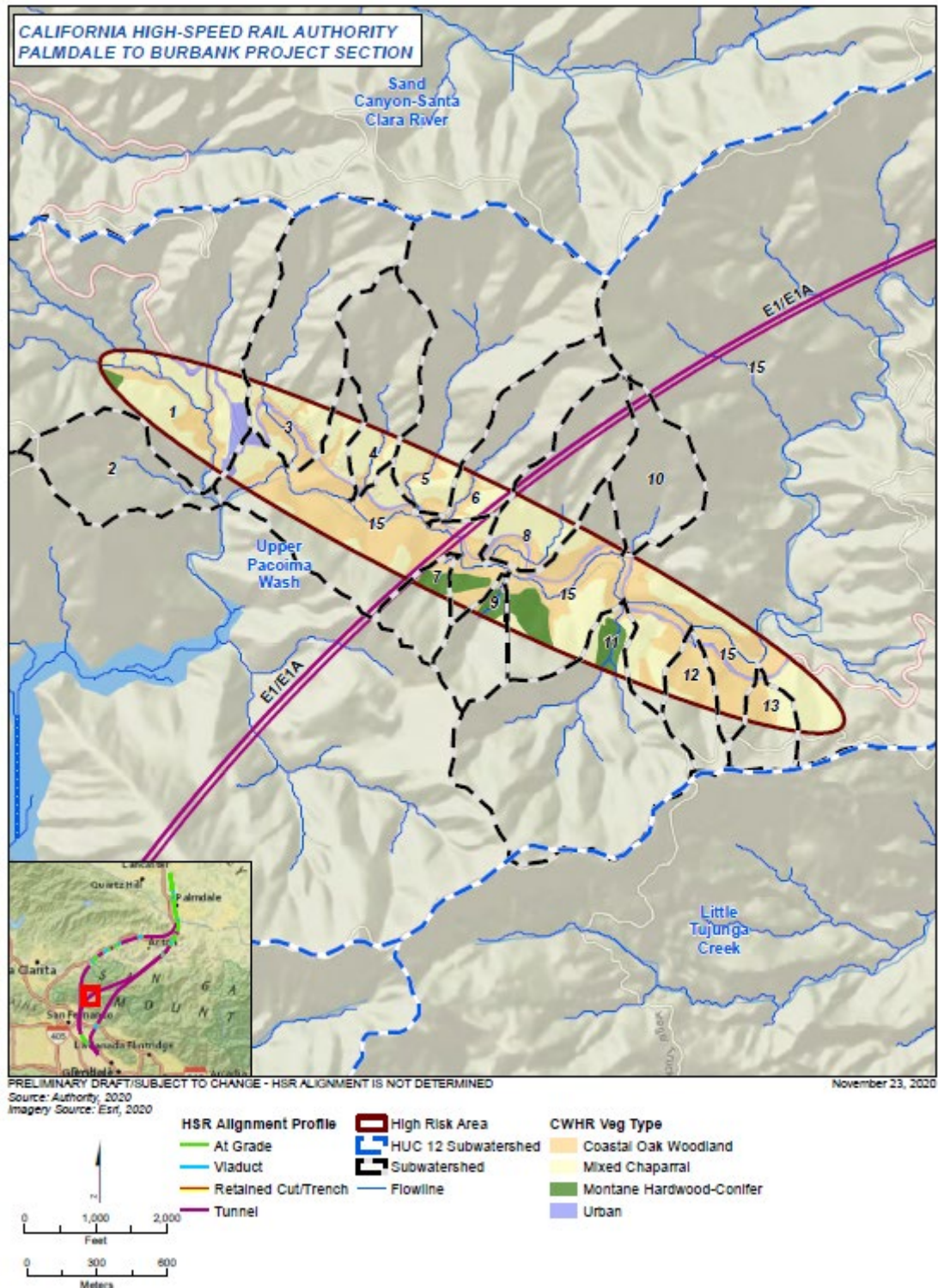


Figure 3.8-D-2 Subwatershed Impacts – High Risk Areas E1/E1A-4

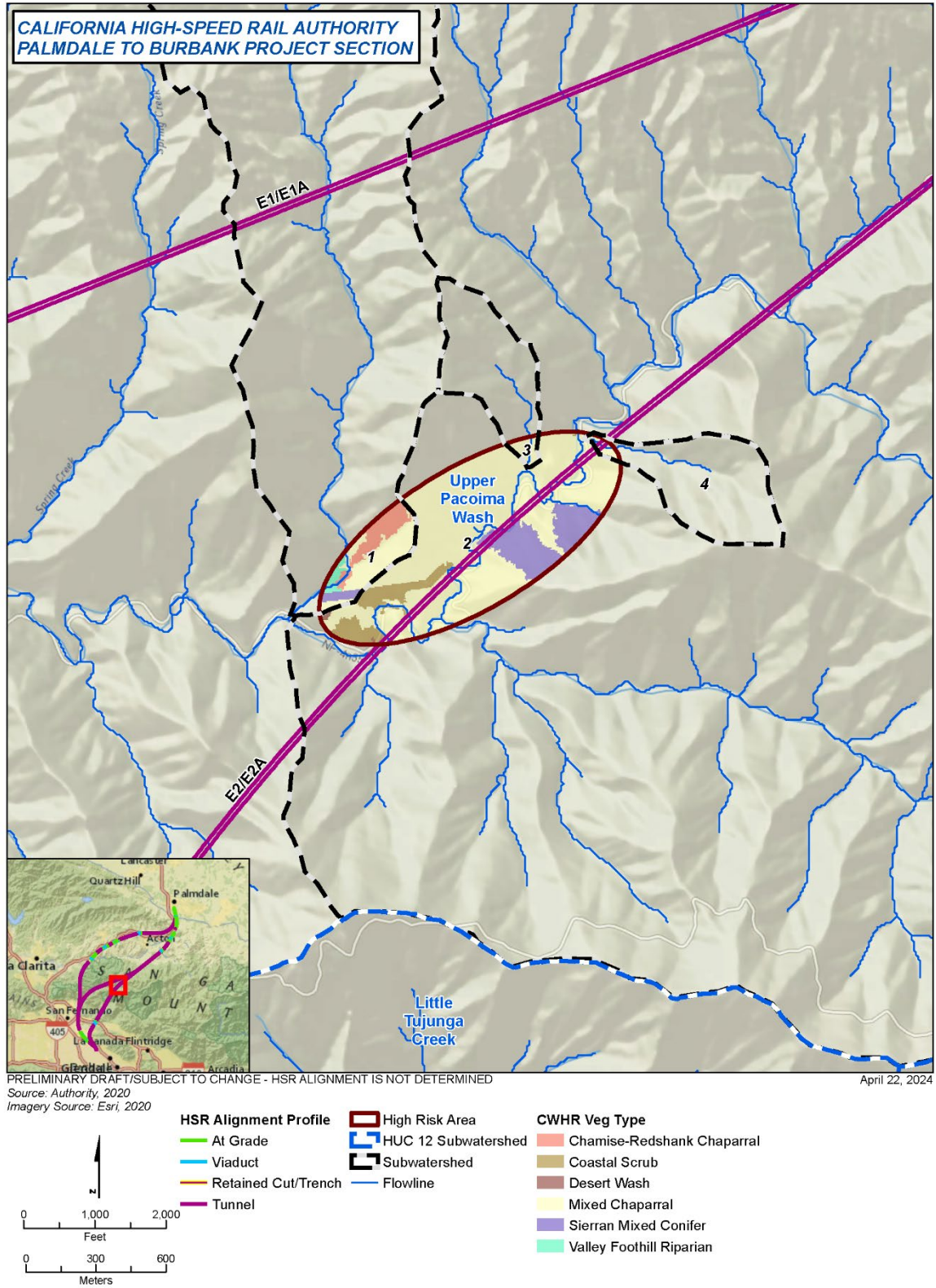


Figure 3.8-D-3 Subwatershed Impacts – High Risk Areas E2/E2A-4

Table 1 Annual Precipitation at Big Tujunga Dam and Estimated Transpiration Rates of Oak Woodland

Month	Jan	Feb	Mar	Apr	May	Jun	Jul	Aug	Sep	Oct	Nov	Dec	Total
Precipitation/ month ¹	5.55 ³	6.08	4.61	1.86	0.56	0.09	0.03	0.13	0.36	0.85	2.55	4.06	26.73
Transpiration/ month ²	2.78	3.04	2.30	0.93	0.28	0.04	0.01	0.07	0.18	0.43	1.27	2.03	13.36
Transpiration/ day	0.09	0.11	0.07	0.03	0.01	0.00	0.00	0.00	0.01	0.01	0.04	0.07	--

¹Precipitation totals came from the Big Tujunga Dam, which is in the southern part of the study area. Rainfall totals were inferred at the High Risk Areas based on these amounts. Source: *Western Regional Climate Center, 2020.*

²Estimated transpiration rates are estimated at 50% of annual precipitation.

³Quantities shown are in inches.

5. Using the information in Table 1, the following formula was used to determine the number of gallons per day for each subwatershed within Figure 3.8-D-1 and Figure 3.8-D-2 per month.

a. $[(X*Y)*A] = W$

X = # acres of oak woodland and montane hardwood-conifer in subwatershed

Y = # inches of transpiration per day per month

A = 27,154.25 gallons (1 acre-inch of water)

W = # gallons of water per day per watershed

b. Using these totals, the total amount of gallons per month and per year, by subwatershed were calculated ($W*\text{#days in month}$) = gallons of water per month per subwatershed.

c. The sum of the monthly totals provided the number of gallons of water per year per subwatershed.

d. The sum of the monthly totals divided by 365 days provided the average number of gallons per day per subwatershed.

e. Example for Subwatershed 1 (beginning with January):

– (Coastal oak woodland = 13.3 acres + Montane Hardwood-Conifer = 1.2 acres) = 14.5 acres.

– $(14.5 \text{ acres} * 0.09 \text{ inches/day}) = 1.305 \text{ acre inch/day} * 27,154.25 = 35,436 \text{ gallons/day}$ (in January)

– $35,436 * 31 = 1,098,516$ gallons for January

– Repeat for all other months

– $5,209,136 \text{ gallons per year} / 365 \text{ days} = 14,272$ gallons of water per day

Table 2 and Table 3 show the number of gallons per day and per year for each subwatershed identified in Figure 3.8-D-1 and Figure 3.8-D-2, along with the average number of gallons per day per subwatershed, respectively. The estimate for the entire High Risk area E1/E1A-4 for oak woodlands and montane hardwood-conifer communities is 70,053,892 gallons of water per year, or approximately 191,928 gallons of water per day. The estimate for the Refined SR14/SR14A-4 High Risk Area for oak woodlands and montane hardwood-conifer communities is 33,086,992 gallons of water per year, or approximately 90,649 gallons of water per day.

The estimate for the E2/E2A-4 High Risk Area for valley foothill riparian communities is 646,651 gallons of water per year, or approximately 1,772 gallons of water per day.

Table 2 Estimated Number of Gallons of Water per Day for Each Subwatershed and For Each Month – High Risk Areas E1/E1A-4

Subwatershed ¹	1	3	4	5	6	7	8	9	10	11	12	13	15
Acres in subwatershed ²	14.5	8.1	2.7	5.6	3.3	4.4	6.8	3.9	0.1	6.3	9.8	5.1	124.4
January (gallons/day)	35,436	19,795	6,598	13,686	8,065	10,753	16,618	9,531	244	15,396	23,950	12,464	304,019
February	43,311	24,194	8,065	16,727	9,857	13,143	20,311	11,649	299	18,818	29,272	15,234	371,579
March	27,562	15,396	5,132	10,644	6,273	8,364	12,925	7,413	190	11,975	18,628	9,694	236,459
April	11,812	6,598	2,199	4,562	2,688	3,584	5,539	3,177	81	5,132	7,983	4,155	101,340
May	3,937	2,199	733	1,521	896	1,195	1,846	1,059	27	1,711	2,661	1,385	33,780
June–August	0	0	0	0	0	0	0	0	0	0	0	0	0
September	3,937	2,199	733	1,521	896	1,195	1,846	1,059	27	1,711	2,661	1,385	33,780
October	3,937	2,199	733	1,521	896	1,195	1,846	1,059	27	1,711	2,661	1,385	33,780
November	15,749	8,798	2,933	6,083	3,584	4,779	7,386	4,236	109	6,843	10,644	5,539	135,120
December	27,562	15,396	5,132	10,644	6,273	8,364	12,925	7,413	190	11,975	18,628	9,694	236,459
Gallons/year	5,209,136	2,909,931	969,977	2,011,804	1,185,527	1,580,703	2,442,905	1,401,078	35,925	2,263,280	3,520,657	1,832,179	44,690,791
Average gallons/day ³	14,272	7,972	2,657	5,512	3,248	4,331	6,693	3,839	98	6,201	9,646	5,020	122,441

¹ Subwatersheds 2 and 14 do not occur in Figure 3.8-D-2.

² Acres of oak woodland and montane hardwood-conifer in subwatershed.

³ Daily average is for comparison between subwatersheds. Monthly daily requirements should be followed as they more accurately show how the daily water requirements change throughout the year.

Table 3 Estimated Number of Gallons of Water per Day for Each Subwatershed and For Each Month – High Risk Area Refined SR14/SR14A-4

Subwatershed ¹	2	5	7	9	10	12	Total
Acres in subwatershed ²	1.4	20.7	14.4	5.3	39.3	11	92.1
January (gallons/day)	3,421	50,588	35,192	12,953	96,045	26,883	225,082
February	4,182	61,830	43,012	15,831	117,388	32,857	275,100
March	2,661	39,347	27,371	10,074	74,701	20,909	175,063
April	1,140	16,863	11,731	4,318	32,015	8,961	75,027
May	380	5,621	3,910	1,439	10,672	2,987	25,009
June–August	0	0	0	0	0	0	0
September	380	5,621	3,910	1,439	10,672	2,987	25,009
October	380	5,621	3,910	1,439	10,672	2,987	25,009
November	1,521	22,484	15,641	5,757	42,686	11,948	100,036
December	2,661	39,347	27,371	10,074	74,701	20,909	175,063
Gallons/year	502,951	7,436,490	5,173,210	1,904,029	14,118,554	3,951,758	33,086,992
Average gallons/day ³	1,378	20,374	14,173	5,217	38,681	10,827	90,649

¹ Subwatersheds 1, 3, 4, 6, 8, and 11 do not contain oak woodland or montane hardwood-conifer communities.

² Acres of oak woodland and montane hardwood-conifer in subwatershed.

³ Daily average is for comparison between subwatersheds. Monthly daily requirements should be followed as they more accurately show how the daily water requirements change throughout the year.

Table 4 Estimated Number of Gallons of Water per Day for Each Subwatershed and For Each Month – High Risk Area E2/E2A-4

Subwatershed ¹	1
Acres in subwatershed ²	1.8
January (gallons/day)	4,399
February	5,377
March	3,421
April	1,466
May	489
June–August	0
September	489
October	489
November	1,955
December	3,421
Gallons/year	646,651
Average gallons/day ³	1,772

¹ Subwatersheds 2, 3, and 4 do not contain oak woodland, montane hardwood-conifer, or valley foothill riparian communities.

² Acres of valley foothill riparian in subwatershed.

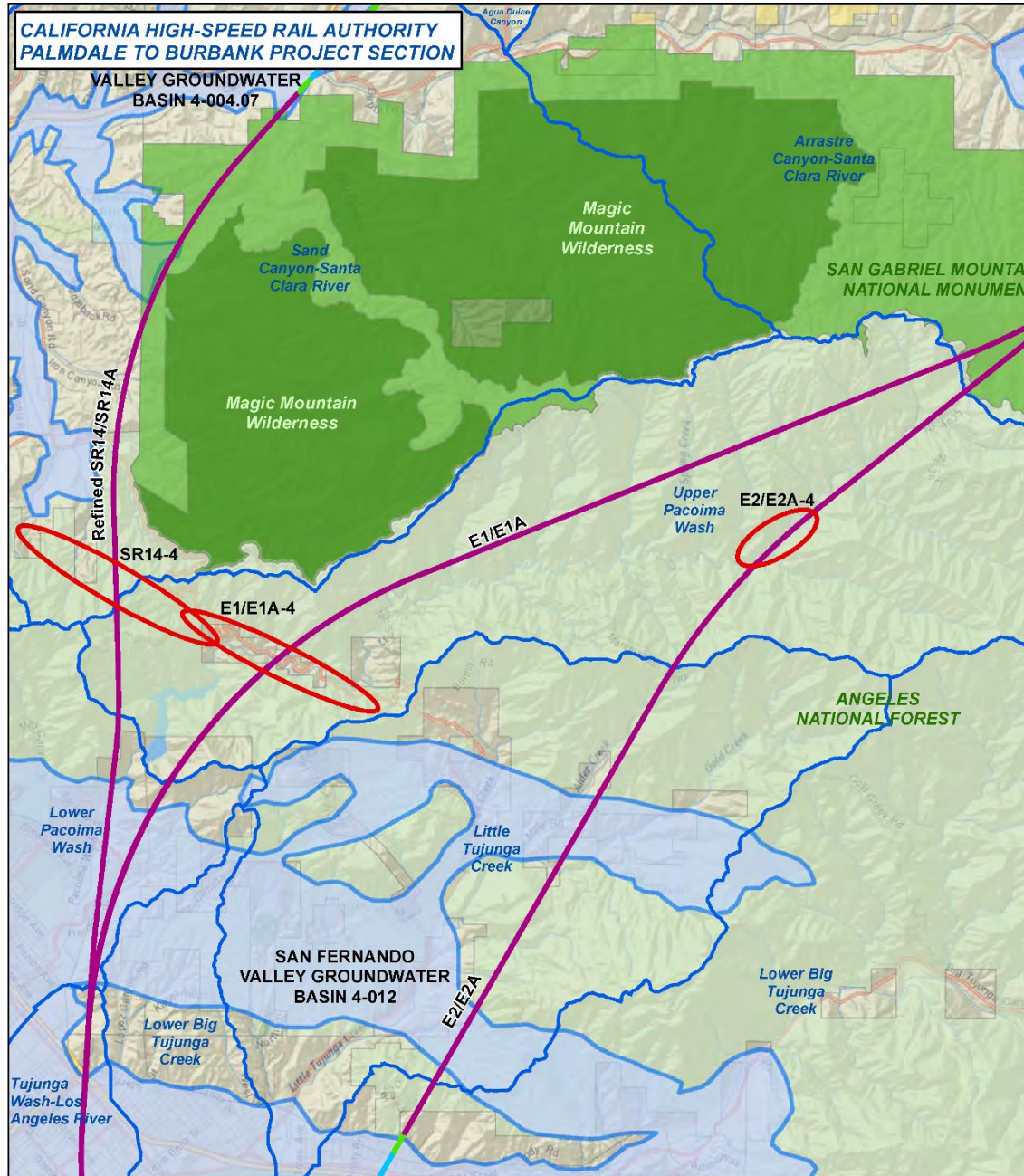
³ Daily average is for comparison between subwatersheds. Monthly daily requirements should be followed as they more accurately show how the daily water requirements change throughout the year.

Using this approach and methodology, examples of supplemental water volumes have been calculated for three High Risk Areas ranging in size— High Risk Area Refined SR14/SR14A-4, High Risk Areas E1/E1A-4, and E2/E2A-4 (Figure 3.8-D-3)—to demonstrate the range of water supply that may be required.

Table 5 shows estimated supplemental water volumes that may be needed for the three High Risk Area examples.

Table 5 Estimated Water Demand for Supplemental Water at Three High Risk Areas within the Angeles National Forest

Subsection	Estimated Water Demand	
	acre-feet/year	gallons/year
Refined SR14/SR14A		
Refined SR14/SR14A-4	101.54	33,086,992.00
With 10% contingency	111.69	36,395,691.00
E1/E1A		
E1/E1A-4	215.00	70,053,892.00
With 10% contingency	236.50	77,059,281.20
E2/E2A (includes areas within the SGMNM)		
E2/E2A-4	1.98	646,651.00
With 10% contingency	2.18	711,316.10



PRELIMINARY DRAFT/SUBJECT TO CHANGE - HSR ALIGNMENT IS NOT DETERMINED February 28, 2024

Source: Authority 2020; CDWR 2015; USGS 2015

Imagery Source: Esri

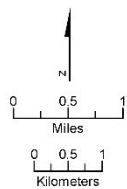
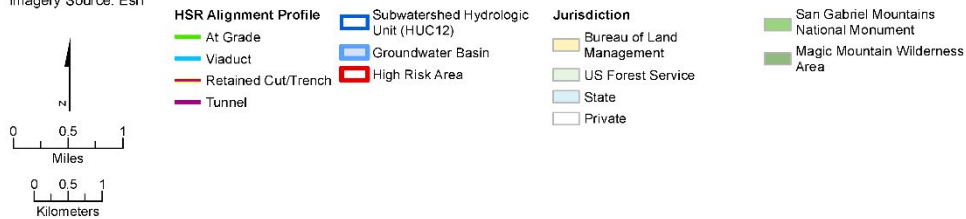


Figure 3.8-D-4 High Risk Areas

3 POTENTIAL SOURCES OF SUPPLEMENTAL WATER

This section assesses various potential sources of supplemental water to determine their practicability. Among other things, sources of supplemental water must have the capacity to provide quantities of water as determined by the supplemental water demand analysis and the quality and water chemistry of the water must be compatible with the naturally occurring water at a specific location. Three options are considered below as potential sources of supplemental water.

3.1 Existing Regional Water Supply Infrastructure and Facilities

Water required for the construction or operation of the portion of the project in the Central Subsection, regardless of the alternative, is reasonably assumed to be provided by agencies such as wholesale water and retail domestic potable water agencies that serve the area (Table 5). None of this water would be drawn from natural water sources in the ANF. The water demand analysis prepared for project construction and operation does not take into account the potential need for supplemental water to address hydrologic impacts within the ANF, as discussed in the AMMP and this analysis.

Without construction of the high-speed rail project, water providers predict that sufficient water supplies would be available to meet demands in 2020, assuming normal water year conditions and multiple dry years, depending on the provider. However, in the event of single or multiple dry year conditions, demands would exceed supplies in 2020 (Table 6). Additional water supplies would be needed to meet demands under such conditions, with or without construction of the project. Without the allocation of additional water during dry years there may not be water supplies available from these providers for AMMP purposes.

Water for construction would be delivered by domestic and wholesale providers to construction sites (primarily portal and adit locations) via pipelines that would be constructed as part of the project. These pipelines have been incorporated into the project footprint and have been evaluated in the impact analysis (See various Draft EIR/EIS chapters). Many of the portal and adit locations where domestic and wholesale water supplies would be piped in for construction are either within or near the ANF. These sources would be relatively close to Risk Areas that may require supplemental water pursuant to the AMMP.

Table 6 Water Distributors and Suppliers in the Central Subsection and Maintenance Facility Resource Study Area

Water Agency	Agency Activity					Sources of Water Supply	Service Area (square mile)	Average Daily Demand (mgd)	Maximum Day Demand (mgd)	Average Annual Demand (ac-ft/yr)	Applicable Subsections
	Retail Domestic Potable Water	Wholesale Water	Water Treatment	Recycled Water	Groundwater Management						
Antelope Valley-East Kern Water Agency	X	X	X	N/A	X	<ul style="list-style-type: none"> ▪ State Water Project ▪ Antelope Valley Groundwater Basin 	2,400	54.92 ¹	N/A	60,234	Central Subsection (all Six Build Alternatives)
Castaic Lake Water Agency	N/A	X	X	X	N/A	<ul style="list-style-type: none"> ▪ State Water Project 	195	38.0	67.0	45,000	Central Subsection (Refined SR14/SR14A Build Alternative)
Santa Clarita Water Division	X	N/A	N/A	N/A	X	<ul style="list-style-type: none"> ▪ Castaic Lake Water Agency ▪ Saugus Formation and Alluvial Aquifer ▪ Buena Vista Water Storage 	50	12.6	24.9	24,558	Central Subsection (Refined SR14/SR14A Build Alternative)
Los Angeles County Waterworks District 37, Acton	X	N/A	X	X	X	<ul style="list-style-type: none"> ▪ Los Angeles Aqueduct ▪ Central Basin ▪ Antelope Valley-East Kern Water Agency ▪ 3 local municipal wells 	23	N/A	N/A	2,200	Central Subsection (all Six Build Alternatives)

Water Agency	Agency Activity					Sources of Water Supply	Service Area (square mile)	Average Daily Demand (mgd)	Maximum Day Demand (mgd)	Average Annual Demand (ac-ft/yr)	Applicable Subsections
	Retail Domestic Potable Water	Wholesale Water	Water Treatment	Recycled Water	Groundwater Management						
Los Angeles County Waterworks District 40, Lancaster	X	N/A	N/A	X	X	<ul style="list-style-type: none"> ▪ Antelope Valley-East Kern Water Agency ▪ Antelope Valley Basin ▪ Colorado River Aqueduct 	88	N/A	N/A	46,000	Maintenance Facility (all Six Build Alternatives)

Sources: Antelope Valley-East Kern Water Agency, 2016; Santa Clarita Valley Family of Water Suppliers, Maddaus Water Management, and Western Policy Research, 2015; Los Angeles Department of Public Works, 2015; Los Angeles Department of Public Works, 2017

Los Angeles County Waterworks District 40, Lancaster would be used for both construction-period and operation demand. Antelope Valley-East Kern Water Agency would be used for construction only.

¹ The Antelope Valley-East Kern Water Agency data is representative of 2020.
ac-ft/yr = acre-feet per year; mgd = million gallons per day; N/A = not applicable

Table 7 Estimated Construction Phase Water Demand Summary – Central Subsection and Maintenance Facility area

Water Providers	Water Supply – Normal Water Year 2020 (ac-ft/yr)	Water Supply – Single Dry Year 2020 (ac-ft/yr)	Water Supply – Multiple Dry Years 2020 (ac-ft/yr)	Predicted Annual Demand 2020 (ac-ft/yr)	Construction Water Demand (ac-ft/yr)
Central Subsection					
Antelope Valley-East Kern Water Agency	89,010	46,750	74,350	383,680	Refined SR14/SR14A: 928/1,266 E1/E1A: 743/1,064 E2/E2A: 498/840
Palmdale Water District	34,689	18,680	25,580	20,800	
LA County Waterworks District 40	110,090	88,290	88,290	88,290	
Santa Clarita Valley Water District	103,402	77,082	98,597	Normal: 76,700 Dry: 84,400 Multi-dry: 84,400	
LA Department of Water and Power	611,800	642,400	642,400	Normal: 611,800 Dry: 642,400 Multi-dry: 642,400	
Maintenance Facility¹					
Los Angeles County Water District 40, Lancaster	110,090	96,490	96,490	96,490	N/A

Sources: Antelope Valley-East Kern Water Agency, 2016; Authority, 2017; Los Angeles County Waterworks Districts, 2017; Palmdale Water District 2016; LADWP 2016; Santa Clarita Valley Water District 2015

¹ Water demand estimates for the construction of the Maintenance Facility would be determined during a later stage in the design process.
ac-ft/yr = acre-feet per year

3.2 Recycled Construction Water

Recycled construction water would be a potential source of supplemental water for AMMP purposes. The volume of water that may be needed for tunnel construction under the ANF would be determined using the water requirements for construction that were estimated in the Tunnel Design and Construction Report. As an example, the volume of water necessary for construction of the SR14A and Refined SR14 Build Alternative alignment has been estimated as a total of 193,680,000 gallons for the entire construction period. It is assumed that between 10 and 20 percent of the water supply used during construction would return to the portal and be treated for reuse. The portals associated with the tunnels under the ANF are located near or within the boundaries of the ANF, which would provide a convenient and relatively close source of water for AMMP purposes.

Any potential secondary use or discharge of this water must be preceded by water treatment for conditions such as hydrocarbon separation, settling of solids, and PH neutralization. After treatment, the recycled construction water could be used as supplemental water to meet AMMP needs.

In addition, the Authority has also identified recycled water sources (in the event that water is not available to single-dry and multi-dry drought conditions). These sources and availability of recycled water are discussed in Chapter 3.6, Public Utilities and Energy, under Impact PUE#3 – Effects from Water Demand during Construction. Depending on the availability, the Authority could truck in recycled water from these sources.

3.3 Dedicated Water Supply Wells

In addition to the sources discussed above in Section 3.2, Recycled Construction Water, an additional potential source of supplemental water for AMMP purposes could be groundwater derived from dedicated water well(s). To be suitable for supplementing surface water, the quantity of water would need to be sufficient to meet the calculated supplement water demand without interruption. The quality of the water would also need to be consistent with the natural water chemistry of the application area.

In order to best match the quantity and quality requirements for supplemental water needs, the dedicated well should be located within the groundwater basin associated with the watershed of the affected Risk Area. For example, the watersheds containing the High Risk Areas ultimately drain into two alluvial groundwater basins—the Santa Clara River Valley Groundwater Basin and the San Fernando Valley Groundwater Basin. Table 8 identifies the High Risk areas identified for this analysis and their associated ground water basin(s). For maintaining water quality and natural recharge into each of the basins, dedicated water supply wells should be constructed in one or both of the two basins, depending on the location of the affected area in the upstream watershed.

Table 8 Risk Areas and Associated Groundwater Basins¹

Alignment	High Risk Area No.	Basin Name
Refined SR14/SR14A	4	Santa Clara River Valley Groundwater Basin 4-4.07 and San Fernando Valley Groundwater Basin 4-12
E1/E1A	2, 4	San Fernando Valley Groundwater Basin 4-12
E2/E2A	2, 4, 5, 6, 7, 8	San Fernando Valley Groundwater Basin 4-12

For practical purposes of filling tanks or water trucks, or pumping via a pipeline, a production well would need to produce several hundred gallons of water per minute. Most of the bedrock wells in the vicinity of the tunnel alignments are low yield wells for private uses and are not capable of producing the quantity of water needed for supplementing affected surface water resources. A large yielding well would need to be in an alluvial groundwater basin rather than in bedrock areas. This would likely result in wells being located outside the ANF and likely at a greater distance from the potentially affected areas than the other sources of water discussed above.

¹ Please note that these High Risk Areas are provided for context, to show the total number of High Risk Areas for each of the Build Alternatives. In this Appendix, the Authority chose three representative High Risk to consider and analyze, in order to evaluate the options, logistics, and feasibility of implementing the response actions that may be implemented in accordance with the AMMP. The Authority chose High Risk Area number 4 for each of the Build Alternatives (i.e., Refined SR14/SR14A-4; E1/E1A-4; and E2/E2A-4).

This page is intentionally left blank

4 ACCESS AND INFRASTRUCTURE FOR CONVEYANCE AND TRANSPORT OF SUPPLEMENTAL WATER

The supplemental water needed for AMMP purposes would need to be transported to the affected site for application. Delivery of water could occur through different methods, depending on quantity, location of water source, and location of the affected area. As a result, the method of conveyance or transport would be specific to each affected area.

Notwithstanding the above, and because most of the potential water sources identified are either within or close to the ANF, conveyance or transport of supplemental water to an affected Risk Area would likely involve either water truck service or pumps and pipelines. Selection of the appropriate method of delivery would require consideration of the following factors:

- Volume of water to be delivered
- Frequency in which the water would need to be applied or discharged
- Distance between the source and application area
- Existing infrastructure between the water source and application area (e.g., existing roads, utility corridors)
- Location, topography, and accessibility of the affected site

The volume of water needed pursuant to the AMMP may dictate whether the use of water trucks to deliver water would be adequate or whether conveyance through pipelines would be required.

To illustrate how the factors listed above would be applied to determine appropriate conveyance and transport methods, specific method(s) have been evaluated for each High Risk Area identified in this analysis. These sites provide three scenarios that illustrate how water may be delivered under different circumstances such as size, location, and accessibility (Figure 3.8-D-1 and Figure 3.8-D-4).

The SR14/SR14A High Risk area is approximately 438.7 acres; this Risk Area is easily accessible via Little Tujunga Canyon Road, as well as the paved road from Bear Divide to the County of Los Angeles Fire Department Camp 9. The volume of supplemental water estimated for this Risk Area (Table 8) could be transported using an average of 10 water truck trips per day. The closest water source location would be from Little Tujunga Canyon Road where the project could install a water line to provide water to Adit SR14 A-1. Little Tujunga Canyon Road runs along the north and east edge of this risk area, and is approximately 100 feet from the risk area boundary at its closest point. The paved road from Bear Divide to the County of Los Angeles Fire Department Camp 9 runs through the middle of this risk area providing good access for trucking water into the risk area or installing additional pipelines if needed with little or no impact to vegetation or disruptive construction activities. These roadways also provide multiple opportunities for setting up water tanks at roadside pull-outs for water storage and use within the risk area. The E1/E1A High Risk area is approximately 366.4 acres and 11,500 feet at the length of the centerline. It is easily accessible via Little Tujunga Road, a paved two-lane road that generally travels through the center of the entire Risk Area and can be accessed from main roads and freeways in the cities of Santa Clarita, Newhall, and Sylmar. The volume of supplemental water estimated for this area is very large and would require an average of 27 water truck trips per day (Table 8). This amount of truck trips is not feasible. As such, the conveyance method most suitable for this location and amount of water necessary would be via a pipeline from the nearby adit entrances, which are within and adjacent to the Risk Area and are approximately 500 and 620 linear feet from Little Tujunga Canyon Road (at the most direct connection), respectively. Constructing a water pipeline along this existing road would have minimal impact, not requiring substantial removal of vegetation, grading, or other substantially disruptive construction activities. Water tanks and irrigation systems could be established at specific locations along the road to facilitate application to the affected areas.

The E2/E2A High Risk area is approximately 171.8 acres and 4,800 feet at the length of the centerline; this Risk Area may be partially accessible by the unpaved and unmaintained Pacoima Road, which is only accessible by Forest Service roads. The volume of supplemental water estimated for this Risk Area (Table 9) could be transported using less than one to two water truck trips per day. The closest water source locations would be from Intermediate Window IW2 or from Portal 4. At both of these locations, the project would be constructing pipelines to bring municipal or wholesale water for construction purposes. Portal 4 would also be a potential source for recycled water from construction. Given the volume of supplemental water potentially needed for this Risk Area and its remote location, trucking water to the Risk Area is most feasible. Access to the limits of this High Risk area from the nearby Intermediate Window IW2 or from Portal 4 would consist of an approximately 24-mile or 31-mile one-way drive, made up of approximately 16 miles on Forest Service roads and an additional 9 and 15 miles on paved or urban roads, respectively, per visit.

A water tank and irrigation systems could be established near this High Risk area to facilitate application to the affected areas. The water would be trucked to the site at a frequency that would have minimal impact. Installation of water tank in irrigation systems at the risk site would likely have minimal effects, such as those caused by minor grading and brush removal.

Table 9 Water Truck Needs and Accessibility for Example Risk Areas

Subsection	Estimated Water Demand (ac-ft/yr) ¹	Approximate Number of Trucks/Day to Meet Annual Water Demand ²	Proximity of Closest Known Usable Road to Risk Area
Refined SR14/SR14A			
SR14/SR14A-4	111.69	10	Little Tujunga Canyon Road (a paved two-lane road) and paved road from Bear Divide to the Los Angeles Fire Department Camp 9 which travels generally through the center for the length of the Risk Area.
E1/E1A			
E1/E1A-4	236.50	27 ³	Little Tujunga Canyon Road (a paved two-lane road) travels generally through the center for the length of the Risk Area.
E2/E2A			
E2/E2A-4	2.18	<1-2	May be accessible by Pacoima Road (an unpaved and unmaintained road) that may extend through the northeastern two-thirds of the Risk Area. Pacoima Road is only accessible by Forest Service roads.

¹ Includes 10% contingency

² Assumes water truck with 8,000-gallon capacity per trip.

³ For E1/E1A-4, the amount of trucks/day needed to meet the annual water demand would be considerable. In this case, a pipe to direct water to the area would be more appropriate.

5 REFERENCES

- Antelope Valley-East Kern Water Agency. 2016. *2015 Urban Water Management Plan*.
www.avek.org/files/4f9de0772/UWMP+2015.pdf (accessed February 2017).
- California High-speed Rail Authority (Authority) 2017. *Water Demand/Wastewater Production Estimates*.
- Folliott, Peter F.; Stropki, Cody L.; Kauffman, Aaron T.; Gottfried, Gerald J. 2008. Transpiration of oak trees in the oak savannas of the Southwestern Borderlands region. In: *Hydrology and Water Resources in Arizona and the Southwest*. 38: 23-28.
- Santa Clarita Valley Family of Water Suppliers, Maddaus Water Management, and Western Policy Research. 2015. *Water Use Efficiency Strategic Plan*. June 24.
- Los Angeles County Waterworks Districts. 2017. *Water Sources*.
<https://dpw.lacounty.gov/wwd/web/YourWater/WaterSources.aspx>
- Los Angeles Department of Public Works. 2017. *Final 2015 Urban Water Management Plan for District 40*. February.
<https://dpw.lacounty.gov/wwd/web/Documents/2015%20Integrated%20Urban%20Water%20Management%20Plan%20for%20the%20Antelope%20Valley.pdf>.
- Los Angeles Department of Water and Power. 2016. *Urban Water Management Plan*.
<https://planning.lacity.gov/eir/CrossroadsHwd/deir/files/references/M217.pdf> (accessed September 2023).
- Palmdale Water District (PWD). 2016. *Urban Water Management Plan*.
https://www.palmdalewater.org/wp-content/uploads/2016/10/PWD_2015UWMP_Final_June2016.pdf (accessed September 2023).
- Santa Clarita Valley Water District 2015. *2015 Urban Water Management Plan for Santa Clarita Valley*. https://www.yourscvwater.com/sites/default/files/SCVWA/2015-FINAL-Urban-Water-Management-Plan-for-Santa-Clarita-Valley_16JUN2017-1.pdf (accessed September 2023).

This page is intentionally left blank