

California High-Speed Rail Authority

# Palmdale to Burbank Project Section

PEPD RECORD SET ADDENDUM SR14A / E1A / E2A

Railway Systems Plans

April 2024



The environmental review, consultation, and other actions required by applicable federal environmental laws for this project are being or have been carried out by the State of California pursuant to 23 U.S.C. 327 and a Memorandum of Understanding dated July 23, 2019, and executed by the Federal Railroad Administration and the State of California.

**GENERAL SHEETS**

DRAWING NO.	DRAWING DESCRIPTION	SHEET NO.
TP-B0001	ALIGNMENT "SR14A/E1A/E2A" INDEX OF DRAWINGS	
TP-B0002	ALIGNMENT "SR14A/E1A/E2A" ABBREVIATIONS	
TP-B0003	ALIGNMENT "SR14A/E1A/E2A" ABBREVIATIONS AND LEGEND	

**CHSR ALIGNMENT "E2A" RAILWAY SYSTEMS AND FACILITIES**

DRAWING NO.	DRAWING DESCRIPTION	SHEET NO.
TP-D0001-E2A	ALIGNMENT "E2A" - TRACTION POWER FACILITIES - LOCATION LAYOUT	

**CHSR ALIGNMENT "SR14A" RAILWAY SYSTEMS AND FACILITIES**

DRAWING NO.	DRAWING DESCRIPTION	SHEET NO.
TP-D0001-14A	ALIGNMENT "SR14A" - TRACTION POWER FACILITIES - LOCATION LAYOUT	
TP-B6001-14A	ALIGNMENT "SR14A" - RAILWAY SYSTEMS - KEY MAP	
TP-F4001-14A	ALIGNMENT "SR14A" - TRACTION POWER SUBSTATION 17A - VINCENT SUBSTATION 1 OF 2	
TP-F4002-14A	ALIGNMENT "SR14A" - TRACTION POWER SUBSTATION 17A - VINCENT SUBSTATION 2 OF 2	
TP-O4002-14A	ALIGNMENT "SR14A" - TRACTION POWER FACILITIES - PARALLELING STATION 2	
TP-O4003-14A	ALIGNMENT "SR14A" - TRACTION POWER FACILITIES - PARALLELING STATION 3	
TP-O4004-14A	ALIGNMENT "SR14A" - TRACTION POWER FACILITIES - SWITCHING STATION 1	
TP-O4005-14A	ALIGNMENT "SR14A" - TRACTION POWER FACILITIES - PARALLELING STATION 4	

**TRACTION POWER FACILITIES DETAIL**

DRAWING NO.	DRAWING DESCRIPTION	SHEET NO.
TP-D5001	ALIGNMENT "SR14A/E1A/E2A" - UNDERGROUND TRACTION POWER FACILITIES - DETAIL 1	
TP-D5002	ALIGNMENT "SR14A/E1A/E2A" - UNDERGROUND TRACTION POWER FACILITIES - DETAIL 2	
TP-D5003	ALIGNMENT "SR14A/E1A/E2A" - UNDERGROUND TRACTION POWER FACILITIES - DETAIL 3	

**CHSR ALIGNMENT "E1A" RAILWAY SYSTEMS AND FACILITIES**

DRAWING NO.	DRAWING DESCRIPTION	SHEET NO.
TP-D0001-E1A	ALIGNMENT "E1A" - TRACTION POWER FACILITIES - LOCATION LAYOUT	
TP-B6001-EA	ALIGNMENT "E1A/E2A" - RAILWAY SYSTEMS - KEY MAP	
TP-F4001-EA	ALIGNMENT "E1A/E2A" - TRACTION POWER SUBSTATION 17B/17C - VINCENT SUBSTATION	
TP-O4002-E1A	ALIGNMENT "E1A" - TRACTION POWER FACILITIES - PARALLELING STATION 2	
TC-F4002-EA	ALIGNMENT "E1A/E2A" - TRAIN CONTROL SYSTEM - STANDALONE RADIO SITE 2	



**TRAIN CONTROL SYSTEM**

DRAWING NO.	DRAWING DESCRIPTION	SHEET NO.
TC-E6002	ALIGNMENT "SR14A" TRAIN CONTROL SYSTEM - INTERLOCKING SITES - SITE D LOCATIONS	
TC-E6003	ALIGNMENT "E1A" TRAIN CONTROL SYSTEM - INTERLOCKING SITES - SITE D LOCATIONS	
TC-E6004	ALIGNMENT "E2A" TRAIN CONTROL SYSTEM - INTERLOCKING SITES - SITE D LOCATIONS	
TC-E6005	TRAIN CONTROL SYSTEM - INTERLOCKING SITES - BURBANK STATION	

c:\pwworking\chsr\dms28532\FB-TP-B0001.dgn

7/22/2021 7:00:58 AM

0400074

	DESIGNED BY <b>R. RODRIGUEZ</b>	<b>PEPD RECORD SET ADDENDUM SR14A/E1A/E2A</b>	 <b>SENER</b>		<b>CALIFORNIA HIGH-SPEED RAIL PROJECT PALMDALE TO BURBANK</b>	CONTRACT NO. HSR14-42				
	DRAWN BY <b>F. VASQUEZ</b>				ALIGNMENT "SR14A/E1A/E2A" GENERAL	DRAWING NO. TP-B0001				
	CHECKED BY <b>A. RELANO</b>				INDEX OF DRAWINGS	SCALE NO SCALE				
	IN CHARGE <b>A. RELANO</b>					SHEET NO.				
REV	DATE	BY	CHK	APP	DESCRIPTION	DATE <b>02/26/2021</b>				



c:\pwworking\chsr\vdms28532\PB-TP-B0002.dgn

1/26/2021 8:44:33 AM

0400074

**A**

**AB** AGGREGATE BASE  
**ABBC** ASBESTOS BONDED BITUMINOUS COATED  
**ABM** AIR-BLOWN MORTAR  
**ABN** ABANDON  
**ABUT** ABUTMENT  
**AC** ASPHALT CONCRETE  
**ACB** ASPHALT CONCRETE BASE  
**ACP** ASBESTOS CEMENT PIPE  
**ADL** ADDED DEAD LOAD  
**ADJ** ADJUST  
**AFES** ALTERNATIVE FLARED END SECTION  
**AHD** AHEAD  
**ALT** ALTERNATE  
**AM** TIME FROM MIDNIGHT TO NOON  
**AP** ALTERNATIVE PIPE  
**APC** ALTERNATIVE PIPE CULVERT  
**APPROX** APPROXIMATE  
**APU** ALTERNATIVE PIPE UNDERDRAIN  
**ARS** ACCELERATION RESPONSE SPECTRUM  
**AR** ACCESS RESTRICTION  
**AS** AGGREGATE SUBBASE  
**ASRP** ALUMINUM SPIRAL RIB PIPE  
**ASSY** ASSEMBLY  
**ATPB** ASPHALT TREATED PERMEABLE BASE  
**ATPM** ASPHALT TREATED PERMEABLE MATERIAL  
**AVE** AVENUE  
**AVG** AVERAGE  
**@** AT

**B**

**BAGR** BRIDGE APPROACH GUARD RAILING  
**BB** BEGINNING OF BRIDGE  
**BC** BEGIN HORIZONTAL CURVE  
**BCC** BALANCED CANTILEVER CONSTRUCTION  
**BCR** BEGIN CURB RETURN  
**BEG** BEGIN  
**BIT CTD** BITUMINOUS COATED  
**BK** BACK  
**BKF** BACKFILL  
**BLDG** BUILDING  
**BLM** BRIDGE-LOG MILE  
**BLVD** BOULEVARD  
**BM** BENCH MARK  
**BND** BOUND  
**BOT** BOTTOM  
**BR** BRIDGE  
**BRG** BEARING  
**BTU** BRITISH THERMAL UNIT  
**BVC** BEGIN VERTICAL CURVE  
**BW** BARBED WIRE

**C**

**CAA** CABLE ANCHOR ASSEMBLY  
**CAP** CORRUGATED ALUMINUM PIPE  
**CAPA** CORRUGATED ALUMINUM PIPE ARCH  
**CAS** CONSTRUCTION AREA SIGN  
**CB** CONCRETE BARRIER  
**CBW** CONCRETE BLOCK WALL  
**C-C** CENTER TO CENTER

**C CONTINUED**

**CHSRA** CALIFORNIA HIGH SPEED RAIL AUTHORITY  
**CHST** CALIFORNIA HIGH SPEED TRAIN  
**CHSR** CALIFORNIA HIGH SPEED RAIL  
**CG** CENTER OF GRAVITY  
**CHNL** CHANNEL  
**CI** CAST IRON  
**CIDH** CAST-IN-DRILLED-HOLE  
**CIP,C-I-P** CAST-IN-PLACE, CAST IRON PIPE  
**CIPCP** CAST IN PLACE CONCRETE PIPE  
**CISS** CAST-IN-STEEL-SHELL  
**CJP** COMPLETE JOINT PENETRATION  
**CL** CENTERLINE, CLASS  
**CL** CENTERLINE  
**CL2** CLASS 2  
**CL-6** CHAIN LINK FENCE (6 FT)  
**CLR** CLEAR, CLEARANCE  
**CM** CORRUGATED METAL  
**CM** CORRUGATED METAL PIPE  
**CO** COUNTY  
**COL** COLUMN  
**CONC** CONCRETE  
**COND** CONDUIT  
**CONN** CONNECTOR  
**CONST** CONSTRUCT, CONSTRUCTION  
**CONT** CONTINUOUS  
**COORD** COORDINATE  
**CP** CANDLEPOWER  
**CR** CREEK  
**CRCP** CONTINUOUS REINFORCED CONCRETE PAVT  
**CRSP** CONCRETED ROCK SLOPE PROTECTION  
**CS** CURVE TO SPIRAL  
**CSP** CORRUGATED STEEL PIPE  
**CSPA** CORRUGATED STEEL PIPE ARCH  
**CTB** CEMENT TREATED BASE  
**CTPB** CEMENT TREATED PERMEABLE BASE  
**CTPM** CEMENT TREATED PERMEABLE MATERIAL  
**CTRS** CENTERS  
**CULV** CULVERT  
**CVFPB** CENTRAL VALLEY FLOOD PROTECTION BOARD

**D**

**D** DEPTH  
**DD** DOWNDRAIN, DIRECTIVE DRILLING  
**DBL** DOUBLE  
**DEG** DEGREE  
**DEL** DELINEATOR  
**DET** DETAIL, DETOUR  
**DF** DOUGLAS FIR  
**DI** DRAINAGE INLET, DROP INLET  
**DIA** DIAMETER  
**DIAPH** DIAPHRAGM  
**DIST** DISTANCE, DISTRICT  
**DMBB** DOUBLE METAL BEAM BARRIER  
**DR** DRIVE  
**DTBB** DOUBLE THRIE BEAM BARRIER  
**DWY** DRIVEWAY

**E**

**E** EAST, EASTING  
**EA** ACTUAL SUPERELEVATION  
**EU** UNBALANCED SUPERELEVATION

**E CONTINUED**

**EASE** EASEMENT  
**EB** END OF BRIDGE, EASTBOUND  
**EC** END HORIZONTAL CURVE  
**ECR** END CURB RETURN  
**ED** EDGE DRAIN  
**EDC** EDGE DRAIN CLEANOUT  
**EDO** EDGE DRAIN OUTLET  
**EDV** EDGE DRAIN VENT  
**ELEC** ELECTROLIER  
**ELECT** ELECTRIC  
**ELEV** ELEVATION  
**ELLN** EXTRALEGAL LEAD NETWORK  
**EMB** EMBANKMENT  
**ENGR** ENGINEER  
**EOD** EDGE OF DECK  
**EP** EDGE OF PAVEMENT  
**EO** EQUATION, EQUAL  
**ES** EDGE OF SHOULDER  
**ETW** EDGE OF TRAVELED WAY  
**EVC** END VERTICAL CURVE  
**EW** ENDWALL  
**EXC** EXCAVATION  
**EXIST, EX.** EXISTING  
**EXP** EXPANSION  
**EXP JT** EXPANSION JOINT  
**EXT** EXTERIOR  
**EXWY** EXPRESSWAY

**F**

**F & C** FRAME AND COVER  
**F & G** FRAME AND GRATE  
**FB** FLOOR BEAM  
**F-B** FRESNO TO BAKERSFIELD  
**FDN** FOUNDATION  
**FEBT** FACING EASTBOUND TRAFFIC  
**FES** FLARED END SECTION  
**FF** FILTER FABRIC  
**FG** FINISHED GRADE  
**FH** FIRE HYDRANT  
**FIG** FIGURE  
**FL** FLOW LINE  
**FNBT** FACING NORTHBOUND TRAFFIC  
**FOC** FACE OF CONCRETE  
**FPLM** FULL SPAN PRECAST  
**FR RD** FRONTAGE ROAD  
**FS** FAR SIDE, FINISHED SURFACE  
**FSBT** FACING SOUTHBOUND TRAFFIC  
**FT** FOOT, FEET  
**FTG** FOOTING  
**FUT** FUTURE  
**FWBT** FACING WESTBOUND TRAFFIC  
**FWY** FREEWAY

**G**

**G** ACCELERATION DUE TO GRAVITY  
**GAGE** GAGE  
**GALV** GALVANIZED  
**GP** GRADING PLANE  
**GR** GUARD RAILING  
**GSP** GALVANIZED STEEL PIPE  
**GTR** GUTTER

**H**

**H** HEIGHT  
**HD** HORIZONTAL DRAIN  
**HDC** HIGH DESERT CORRIDOR  
**HDWL** HEADWALL  
**HEX HD** HEXAGONAL HEAD  
**HMA** HOT MIXED ASPHALT  
**HORIZ** HORIZONTAL  
**HP** HINGE POINT, HORSEPOWER  
**HPS** HIGH PERFORMANCE STEEL  
**HR** HOUR  
**HS** HIGH STRENGTH  
**HSR** HIGH SPEED RAIL  
**HST** HIGH SPEED TRAIN  
**HW** HEADWALL, HIGH WATER  
**HWM** HIGH WATER MARK  
**HWY** HIGHWAY

**I**

**IB** IMPORTED BORROW  
**ID** INSIDE DIAMETER  
**IF** INSIDE FACE  
**IN** INCH, INCHES  
**INT** INTERIOR  
**INV** INVERT  
**IRR** IRRIGATION

**J**

**JCT** JUNCTION  
**JP** JOINT POLE  
**JPCP** JOINTED PLAIN CONCRETE PAVEMENT  
**JS** JUNCTION STRUCTURE  
**JT** JOINT

**K**

**K** DISTANCE TO ACHIEVE 1% GRADE CHANGE

**L**

**L** LENGTH  
**LAT** LATITUDE  
**LC** LENGTH OF CURVE  
**LCB** LEAN CONCRETE BASE  
**LMF** LIGHT MAINTENANCE FACILITY  
**LN** LANE  
**LOC** LOCATION  
**LOL** LAYOUT LINE  
**LONG** LONGITUDE  
**LONGIT** LONGITUDINAL  
**LS** LENGTH OF SPIRAL  
**LT** LEFT

**M**

**MAINT** MAINTENANCE  
**MAX** MAXIMUM  
**MB** METAL BEAM  
**MBB** METAL BEAM BARRIER  
**MBGR** METAL BEAM GUARD RAILING  
**MED** MEDIAN  
**M-F** MERCED TO FRESNO  
**MH** MANHOLE  
**MIN** MINIMUM  
**MISC** MISCELLANEOUS  
**MISC I & S** MISCELLANEOUS IRON AND STEEL  
**MKR** MARKER  
**M/L** MAIN LINE (RAILWAY)

**M CONTINUED**

**MOD** MODIFIED, MODIFY  
**MON** MONUMENT  
**MP** METAL PLATE  
**MPGR** METAL PLATE GUARD RAILING  
**MPH** MILES PER HOUR  
**MR** MOVEMENT RATING  
**MSE** MECHANICALLY STABILIZED EARTH  
**MSS** MOVING SCAFFOLDING SYSTEM  
**MT** MAIN TRACK  
**MTL** MATERIAL

**N**

**N** NORTH, NORTHING  
**N/A** NOT APPLICABLE  
**NB** NORTHBOUND  
**NO.** NUMBER (MUST HAVE PERIOD)  
**NOS.** NUMBERS (MUST HAVE PERIOD)  
**NPS** NOMINAL PIPE SIZE  
**NS** NEAR SIDE  
**NTS** NOT TO SCALE

**O**

**OBLR** OBLITERATE  
**OC** OVERCROSSING  
**OCS** OVERHEAD CONTACT SYSTEM  
**OD** OUTSIDE DIAMETER  
**OF** OUTSIDE FACE  
**OG** ORIGINAL GROUND  
**OGAC** OPEN GRADED ASPHALT CONCRETE  
**OH** OVERHEAD  
**O-O** OUT TO OUT  
**OPP** OPPOSITE

**P**

**P** PAGE  
**PAP** PERFORATED ALUMINUM PIPE  
**PB** PULL BOX  
**PC** POINT OF CURVATURE, PRECAST  
**PCC** POINT OF COMPOUND CURVE, PORTLAND CEMENT CONCRETE  
**PCP** PERFORATED CONCRETE PIPE, PRESTRESSED CONCRETE PIPE  
**PCVC** POINT OF COMPOUND VERTICAL CURVE  
**PED** PEDESTRIAN  
**PED OC** PEDESTRIAN OVERCROSSING  
**PED UC** PEDESTRIAN UNDERCROSSING  
**PERM MTL** PERMEABLE MATERIAL  
**PG** PROFILE GRADE  
**PI** POINT OF INTERSECTION  
**PJP** PARTIAL JOINT PENETRATION  
**P,PL** PLATE  
**P/L** PROPERTY LINE  
**PM** POST MILE, TIME FROM NOON TO MIDNIGHT  
**PN** PAVING NOTCH  
**POB** POINT OF BEGINNING  
**POC** POINT OF HORIZONTAL CURVE  
**POE** POINT OF ENDING  
**POT** POINT OF TANGENT  
**POVC** POINT OF VERTICAL CURVE  
**PP** PIPE PILE, PLASTIC PIPE, POWER POLE  
**PPL** PREFORMED PERMEABLE LINER  
**PPP** PERFORATED PLASTIC PIPE  
**PRC** POINT OF REVERSE CURVE

DESIGNED BY  
**R. RODRIGUEZ**  
DRAWN BY  
**F. VASQUEZ**  
CHECKED BY  
**A. RELANO**  
IN CHARGE  
**A. RELANO**  
DATE  
**02/26/2021**

PEPD RECORD SET  
ADDENDUM  
SR14A/E1A/E2A  
  
NOT FOR  
CONSTRUCTION



**CALIFORNIA HIGH-SPEED RAIL PROJECT**  
**PALMDALE TO BURBANK**  
  
ALIGNMENT "SR14A/E1A/E2A"  
GENERAL  
ABBREVIATIONS

CONTRACT NO.  
**HSR14-42**  
DRAWING NO.  
**TP-B0002**  
SCALE  
**NO SCALE**  
SHEET NO.

REV	DATE	BY	CHK	APP	DESCRIPTION

**P CONTINUED**

PRF PAVEMENT REINFORCING FABRIC  
 PROP PROPOSED  
 PRVC POINT OF REVERSE VERTICAL CURVE  
 PS&E PLANS, SPECIFICATIONS AND ESTIMATES  
 PS, P/S PRESTRESSED, PARALLEL STATION  
 PSP PERFORATED STEEL PIPE  
 PT POINT OF TANGENCY  
 PVC POLYVINYL CHLORIDE  
 PVI POINT OF VERTICAL INTERSECTION  
 PVMT PAVEMENT  
 PVP MAINTENANCE VEHICLE PULLOUT

**Q**

QTY QUANTITY

**R**

R RADIUS  
 R & D REMOVE AND DISPOSE  
 R & S REMOVE AND SALVAGE  
 R/C RATE OF CHANGE  
 RCA REINFORCED CONCRETE ARCH  
 RCB REINFORCED CONCRETE BOX  
 RCP REINFORCED CONCRETE PIPE  
 RCPA REINFORCED CONCRETE PIPE ARCH  
 RD ROAD  
 REINF REINFORCED, REINFORCEMENT, REINFORCING  
 REL RELOCATE  
 REPL REPLACEMENT  
 RET RETAINING  
 REV REVISED  
 RDWY ROADWAY  
 RM ROAD-MIXED  
 R/W, ROW RIGHT OF WAY  
 RP RADIUS POINT, REFERENCE POINT  
 RR RAILROAD  
 RSP ROCK SLOPE PROTECTION  
 RT RIGHT  
 RTE ROUTE  
 RW REDWOOD, RETAINING WALL  
 RWY RAILWAY

**S**

S SOUTH, SUPPLEMENT, STATION LINE  
 SAE STRUCTURE APPROACH EMBANKMENT  
 SALV SALVAGE  
 SAPP STRUCTURAL ALUMINUM PLATE PIPE  
 SB SOUTHBOUND  
 SC SPIRAL TO CURVE  
 SCRRRA SOUTHERN CALIFORNIA REGIONAL RAIL AUTHORITY  
 SCSP SLOTTED CORRUGATED STEEL PIPE  
 SD STORM DRAIN  
 SEC SECOND  
 SECT SECTION  
 SEP SEPARATION  
 SG SUBGRADE  
 SHLD SHOULDER  
 SHT SHEET  
 SIM SIMILAR  
 SM SELECTED MATERIAL  
 SPEC SPECIAL, SPECIFICATIONS  
 SPP SLOTTED PLASTIC PIPE  
 SS SLOPE STAKE, SPIRAL TO SPIRAL

**S CONTINUED**

SSBM STRAP AND SADDLE BRACKET METHOD  
 SSD STRUCTURAL SECTION DRAIN  
 SSPA STRUCTURAL STEEL PLATE ARCH  
 SSPP STRUCTURAL STEEL PLATE PIPE  
 SSPPA STRUCTURAL STEEL PLATE PIPE ARCH  
 SSRP STEEL SPIRAL RIB PIPE  
 SR STATE ROUTE  
 ST STREET, SPIRAL TO TANGENT  
 STA STATION  
 STBB SINGLE THRIE BEAM BARRIER  
 STD STANDARD  
 STR STRUCTURE  
 SRS STAND ALONE RADIO SITE  
 SURF SURFACING  
 SW SIDEWALK, SOUND WALL  
 SWR SEWER  
 SWS SWITCHING STATION  
 SYM SYMMETRICAL  
 S4S SURFACE 4 SIDES

**T**

T SEMI-TANGENT  
 TAB TABLET  
 TAN TANGENT  
 TBB THRIE BEAM BARRIER  
 TBR TIMBER  
 TC TOP OF CURB, TANGENT TO CURVE  
 TCB TRAFFIC CONTROL BOX  
 TEL TELEPHONE  
 TEMP TEMPORARY  
 TG TOP OF GRADE  
 TM TECHNICAL MEMORANDUM  
 TOT TOTAL  
 TP TELEPHONE POLE  
 TPB TREATED PERMEABLE BASE  
 TPM TREATED PERMEABLE MATERIAL  
 TPSS TRACTION POWER SUPPLY STATION  
 TRANS TRANSITION, TRANSVERSE  
 TANGENT TO SPIRAL  
 TSMF TERMINAL STORAGE AND MAINTENANCE FACILITY  
 TYP TYPICAL  
 TOR TOP OF RAIL

**U**

UC UNDERCROSSING  
 UD UNDERDRAIN  
 UON UNLESS OTHERWISE NOTED  
 UP UNDERPASS  
 UPRR UNION PACIFIC RAILROAD  
 USFWS UNITED STATES FISH AND WILDLIFE SERVICE

**V**

V VALVE,  
 DESIGN SPEED  
 VAR VARIABLE  
 VC VERTICAL CURVE  
 VCP VITRIFIED CLAY PIPE  
 VERT VERTICAL  
 VIA VIADUCT  
 VOL VOLUME

**W**

W WEST,  
 WIDTH  
 WB WESTBOUND  
 WH WEEP HOLE  
 WM WIRE MESH  
 WS WATER SURFACE  
 WSP WELDED STEEL PIPE  
 WT WEIGHT  
 WV WATER VALVE  
 WW WINGWALL  
 WWLWL WINGWALL LAYOUT LINE  
 W/ WITH

**X**

X SEC CROSS SECTION  
 XING CROSSING

**Y**

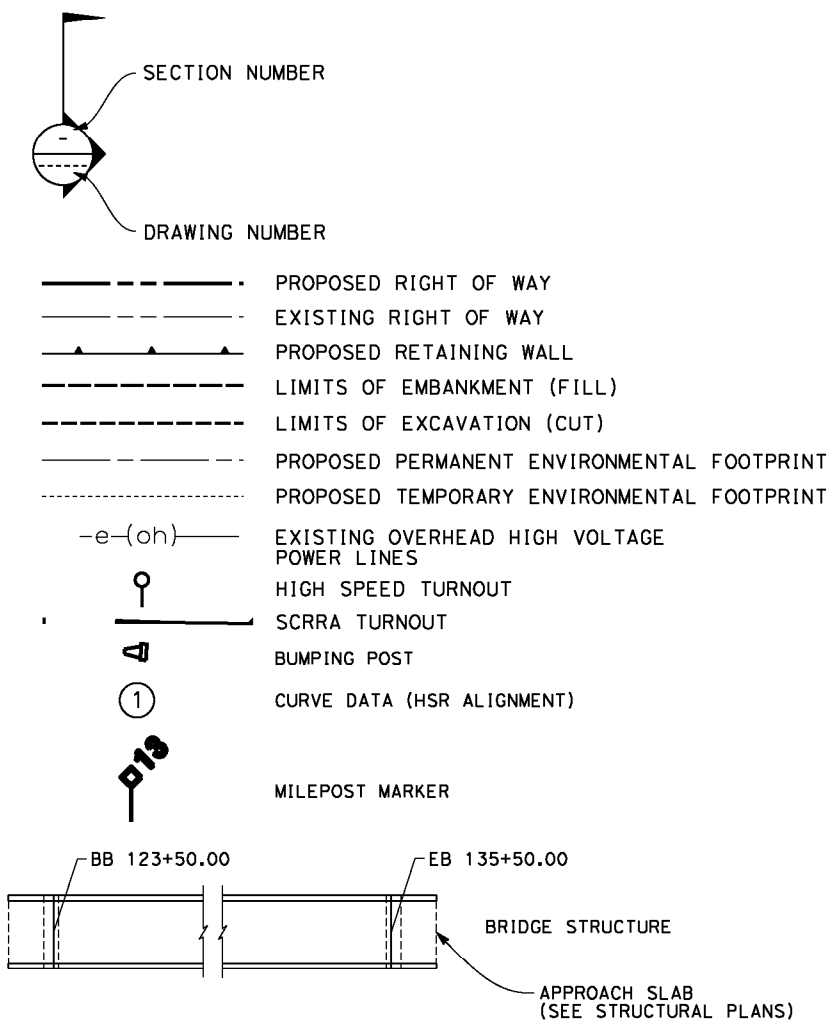
YR YEAR  
 YRS YEARS

**GENERAL NOTES**

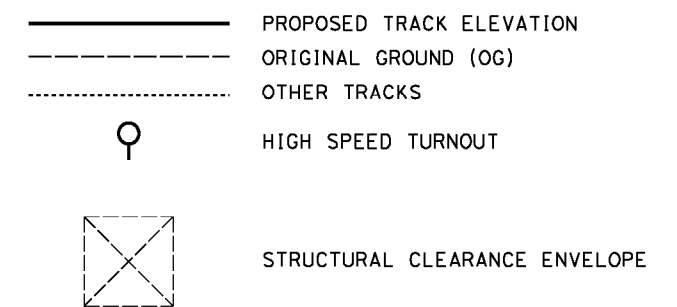
1. TRACK PROFILE IS DESIGNED AS CENTERLINE AT THE TOP OF THE SB LOW RAIL.
2. MINIMUM VERTICAL CLEARANCE REQUIREMENTS TO CANALS AND DITCHES ARE NOT KNOWN. FURTHER CONSULTATION WITH THE WATERCOURSE OWNERS WILL BE REQUIRED TO DETERMINE NECESSARY CLEARANCES. 3'-0" FREEBOARD HAS BEEN ALLOWED OVER THE 100-YEAR FLOOD LEVEL ELEVATIONS OF THE WASHES AND LA RIVER.
3. THE FOLLOWING ARE ROADWAY DESIGN STANDARD AND GUIDELINES:  
 A. CALTRANS HIGHWAY DESIGN MANUAL (2006)  
 B. AASHTO ROADSIDE DESIGN GUIDE (2006)  
 C. APPLICABLE LOCAL DESIGN STANDARD AND GUIDELINES (I.E., CITY OF LOS ANGELES)
4. FOR ROADWAY IMPROVEMENTS, SEE ROADWAY PLANS.
5. FINAL SLOPES TO BE DEFINED AT A LATER STAGE, WHEN THE GEOTECHNICAL STUDY IS AVAILABLE.
6. STRUCTURE DIMENSIONS ARE INDICATIVE.
7. STA 296+82.67 (SPRUCE CT) IS THE NORTHERN LIMIT OF THE PALMDALE-BURBANK ENVIRONMENTAL DOCUMENT. NORTH OF THIS POINT REFER TO BAKERSFIELD-PALMDALE ENVIRONMENTAL DOCUMENT. DESIGN FEATURES BETWEEN STA 265+00.00 AND STA 296+82.67 (SPRUCE CT) SHOWN FOR REFERENCE ONLY.

**LEGEND**

**PLAN**



**PROFILE**



c:\pwworking\chsr\dms28532\PB-TP-B0003.dgn

3/30/2021 4:31:30 PM

0400074

REV	DATE	BY	CHK	APP	DESCRIPTION

DESIGNED BY  
**R. RODRIGUEZ**  
 DRAWN BY  
**F. VASQUEZ**  
 CHECKED BY  
**A. RELANO**  
 IN CHARGE  
**A. RELANO**  
 DATE  
**02/26/2021**

**PEPD RECORD SET  
 ADDENDUM  
 SR14A/E1A/E2A**  
**NOT FOR  
 CONSTRUCTION**



**CALIFORNIA HIGH-SPEED RAIL PROJECT  
 PALMDALE TO BURBANK**  
 ALIGNMENT SR14A/E1A/E2A"  
 GENERAL  
 ABBREVIATIONS AND LEGEND

CONTRACT NO.  
**HSR14-42**  
 DRAWING NO.  
**TP-B0003**  
 SCALE  
**NO SCALE**  
 SHEET NO.

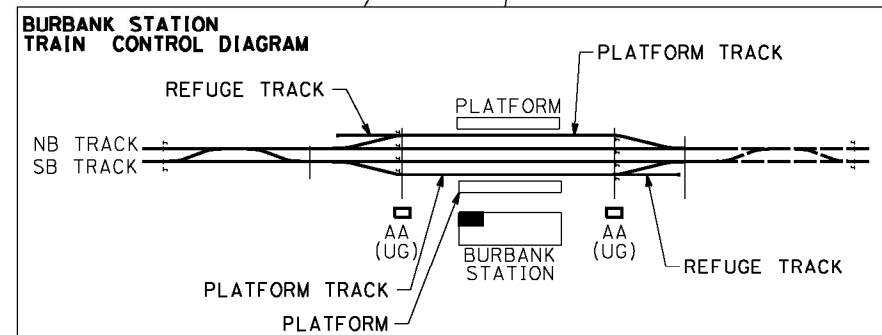
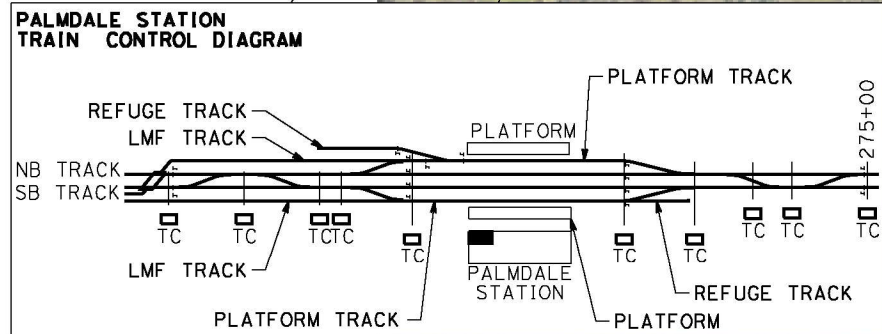
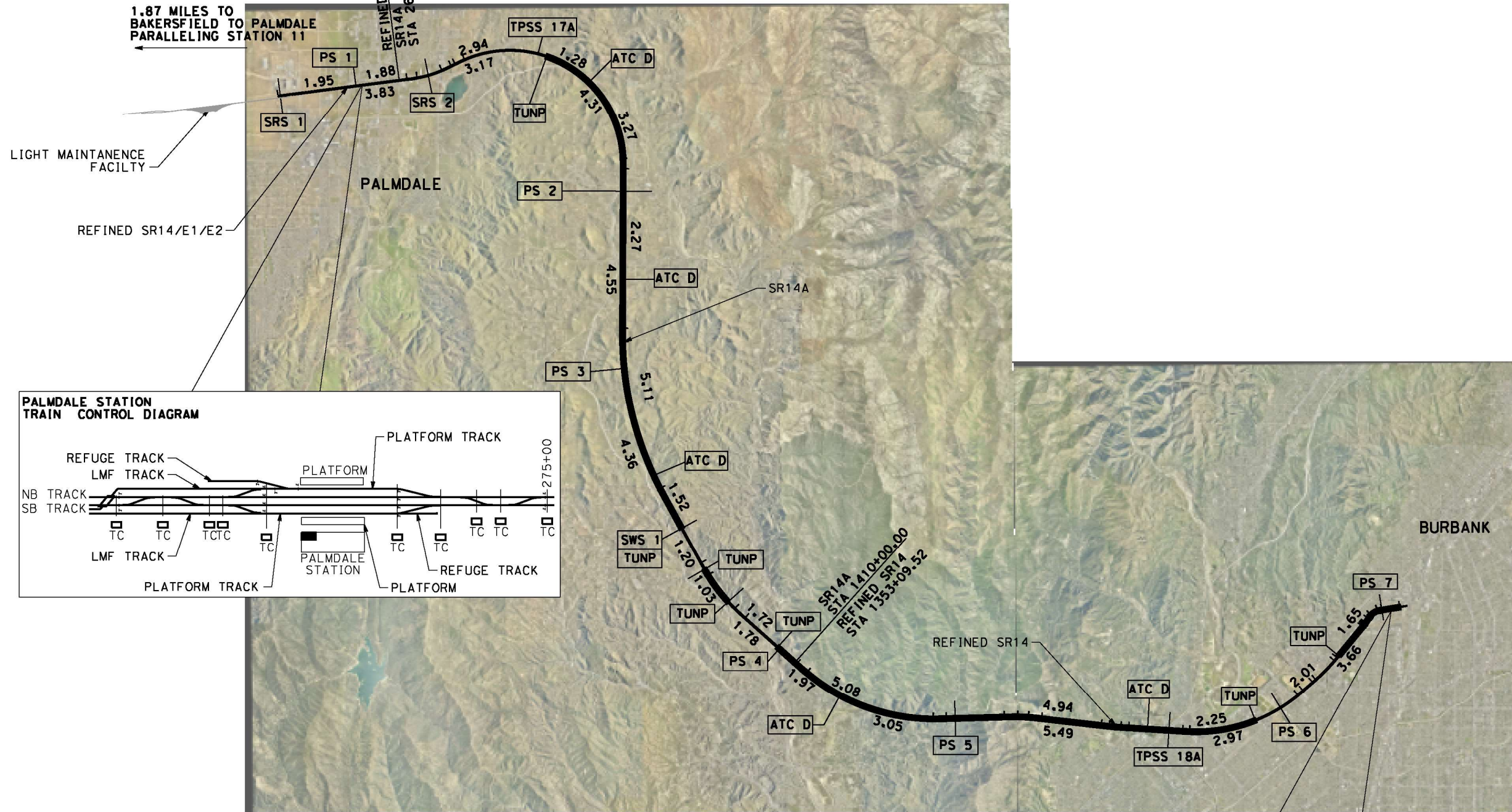


c:\pwworking\vehisr\vdms28532\PB-TP-D0001-SR14A.dgn

3/11/2021 2:29:31 PM

0400074

1.87 MILES TO BAKERSFIELD TO PARALLELING STATION 11



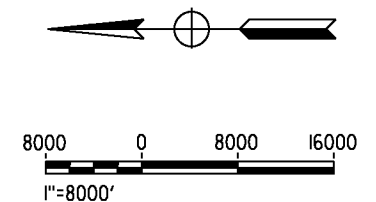
**LEGEND**

RAILWAY SYSTEMS FACILITY	5.0
SPACING (MILES)	
AT- GRADE / ELEVATED	————
UNDERGROUND	=====

**ABBREVIATIONS:**

TPSS:	TRACTION POWER SUBSTATION
PS:	PARALLELING STATION
SWS:	SWITCHING STATION
TUNP:	TUNNEL PORTAL FACILITIES
SRS:	STANDALONE RADIO SITE
TC:	TRAIN CONTROL FACILITY
ATC:	AUTOMATIC TRAIN CONTROL

- NOTES:**
1. SITE STATIONING GIVEN IS APPROXIMATE AND WILL BE FINALIZED IN FUTURE DESIGN PHASE.
  2. IN UNDERGROUND SECTIONS, RF COMMUNICATION WILL BE USING DIRECTIONAL ANTENNAS OR RADIANT CABLES.
  3. TRACTION POWER FACILITIES HAVE RADIO ANTENNAS.
  4. ALL TUNNEL PORTALS (TUNP) REQUIRE SPACE FOR RADIO MASTS AS WELL AS ANTENNAS, PLUS AN ASSOCIATED CABIN TO HOUSE RADIO EQUIPMENT. ATC EQUIPMENT CABINS WILL BE LOCATED AT THESE LOCATIONS TOO.
  5. RADIO EQUIPMENT WITHIN TUNNELS WILL BE INSTALLED IN CROSS PASSAGES EQUIPMENT ROOMS AND AT PARALLELING STATIONS.



REV	DATE	BY	CHK	APP	DESCRIPTION

DESIGNED BY  
**R. RODRIGUEZ**  
DRAWN BY  
**F. VASQUEZ**  
CHECKED BY  
**A. RELAÑO**  
IN CHARGE  
**A. RELAÑO**  
DATE  
**02/26/2021**

**PEPD RECORD SET  
ADDENDUM  
SR14A/E1A/E2A**

**NOT FOR  
CONSTRUCTION**



**CALIFORNIA HIGH-SPEED RAIL PROJECT**  
**PALMDALE TO BURBANK**  
ALIGNMENT "SR14A"

TRACTION POWER FACILITIES  
LOCATION LAYOUT

CONTRACT NO.  
**HSR14-42**

DRAWING NO.  
**TP-D0001-14A**

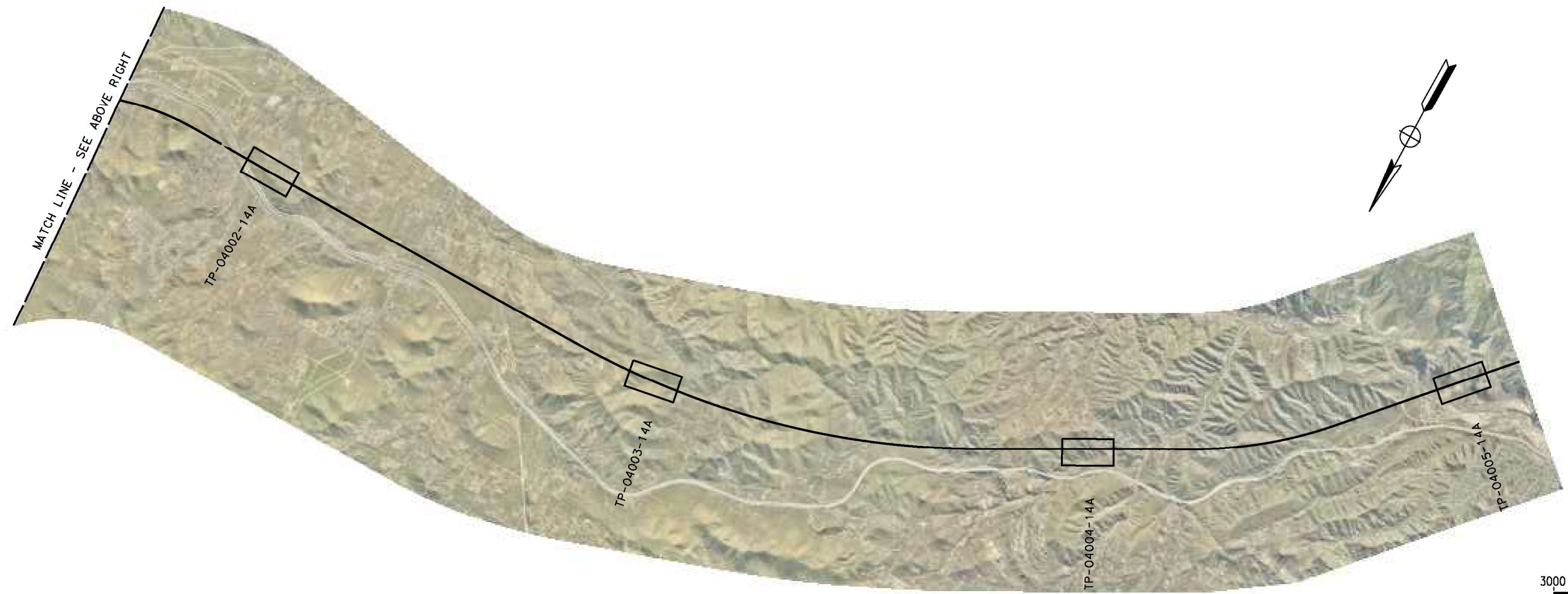
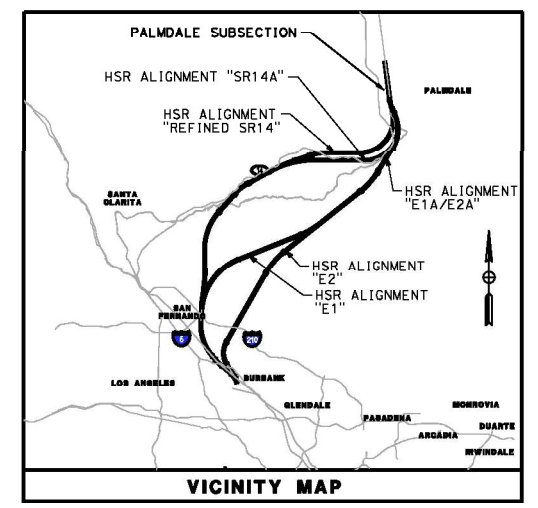
SCALE  
**AS SHOWN**

SHEET NO.

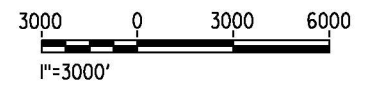




MATCH LINE - SEE BELOW LEFT



MATCH LINE - SEE ABOVE RIGHT



c:\pwworking\chris\dms28532\FB-TP-B6001-SR14A.dgn

3/4/2021 12:16:00 PM

0400074

REV	DATE	BY	CHK	APP	DESCRIPTION

DESIGNED BY  
**R. RODRIGUEZ**  
DRAWN BY  
**F. VASQUEZ**  
CHECKED BY  
**A. RELANO**  
IN CHARGE  
**A. RELANO**  
DATE  
**02/26/2021**

PEPD RECORD SET  
ADDENDUM  
SR14A/E1A/E2A  
  
NOT FOR  
CONSTRUCTION



**CALIFORNIA HIGH-SPEED RAIL PROJECT**  
**PALMDALE TO BURBANK**  
ALIGNMENT "SR14A"  
  
RAILWAY SYSTEMS  
KEY MAP

CONTRACT NO.  
**HSR14-42**  
DRAWING NO.  
**TP-B6001-14A**  
SCALE  
**AS SHOWN**  
SHEET NO.





MATCH LINE - SEE TP-F4001-14A

### TRACTION POWER SUBSTATION 17A

c:\pwworking\chsr\dms28532\pb-tp-f4001-sr14a.dgn

3/4/2021 12:12:53 PM

0400074

REV	DATE	BY	CHK	APP	DESCRIPTION

DESIGNED BY  
**R. RODRIGUEZ**

DRAWN BY  
**F. VASQUEZ**

CHECKED BY  
**A. RELANO**

IN CHARGE  
**A. RELANO**

DATE  
**02/26/2021**

**PEPD RECORD SET  
ADDENDUM  
SR14A/E1A/E2A**

**NOT FOR  
CONSTRUCTION**



**CALIFORNIA HIGH-SPEED RAIL PROJECT**  
**PALMDALE TO BURBANK**  
ALIGNMENT "SR14A"  
TRACTION POWER FACILITIES  
TRACTION POWER SUBSTATION 17A  
VINCENT SUBSTATION 1 OF 2

CONTRACT NO.  
**HSR14-42**

DRAWING NO.  
**TP-F4001-14A**

SCALE  
**AS SHOWN**

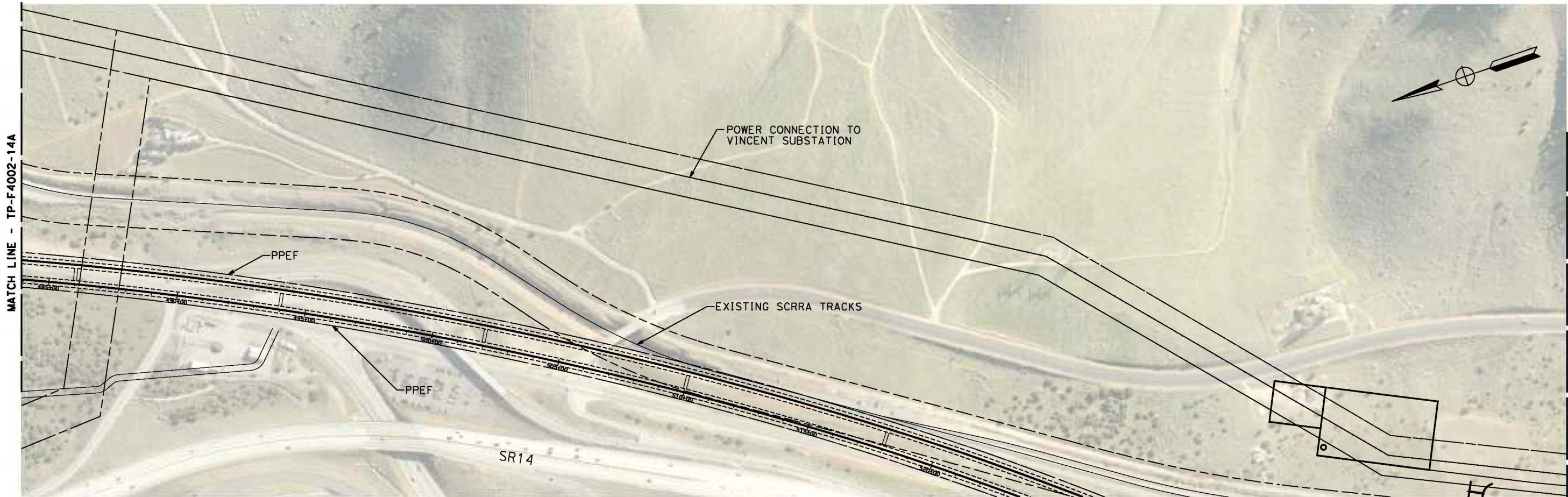
SHEET NO.



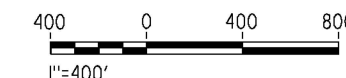
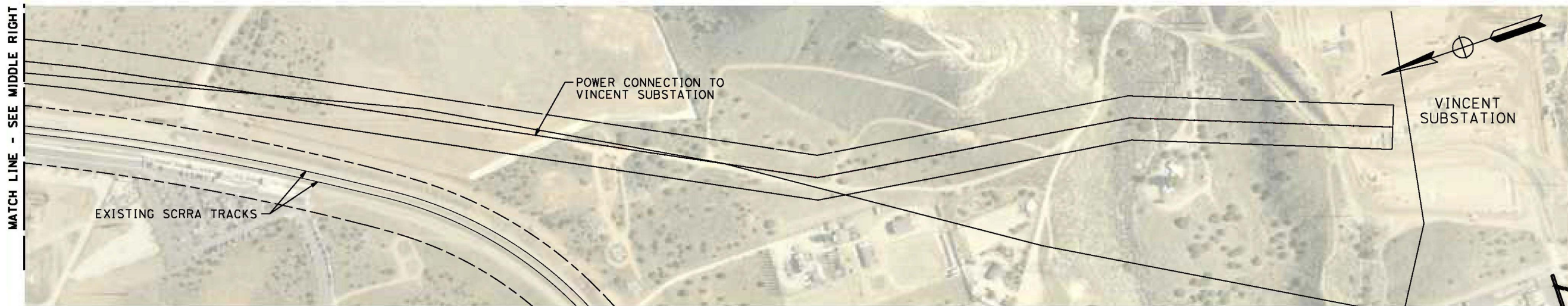
c:\pwworking\chsr\dms28532\TP-F4002-SR14A.dgn

3/4/2021 12:08:45 PM

0400074



MATCH LINE - SEE LOWER LEFT



**TRACTION POWER SUBSTATION 17A**

REV	DATE	BY	CHK	APP	DESCRIPTION

DESIGNED BY  
R. RODRIGUEZ  
DRAWN BY  
F. VASQUEZ  
CHECKED BY  
A. RELANO  
IN CHARGE  
A. RELANO  
DATE  
02/26/2021

PEPD RECORD SET  
ADDENDUM  
SR14A/E1A/E2A  
  
NOT FOR  
CONSTRUCTION



**CALIFORNIA HIGH-SPEED RAIL PROJECT**  
**PALMDALE TO BURBANK**  
ALIGNMENT "SR14A"  
TRACTION POWER FACILITIES  
TRACTION POWER SUBSTATION 17A  
VINCENT SUBSTATION 2 OF 2

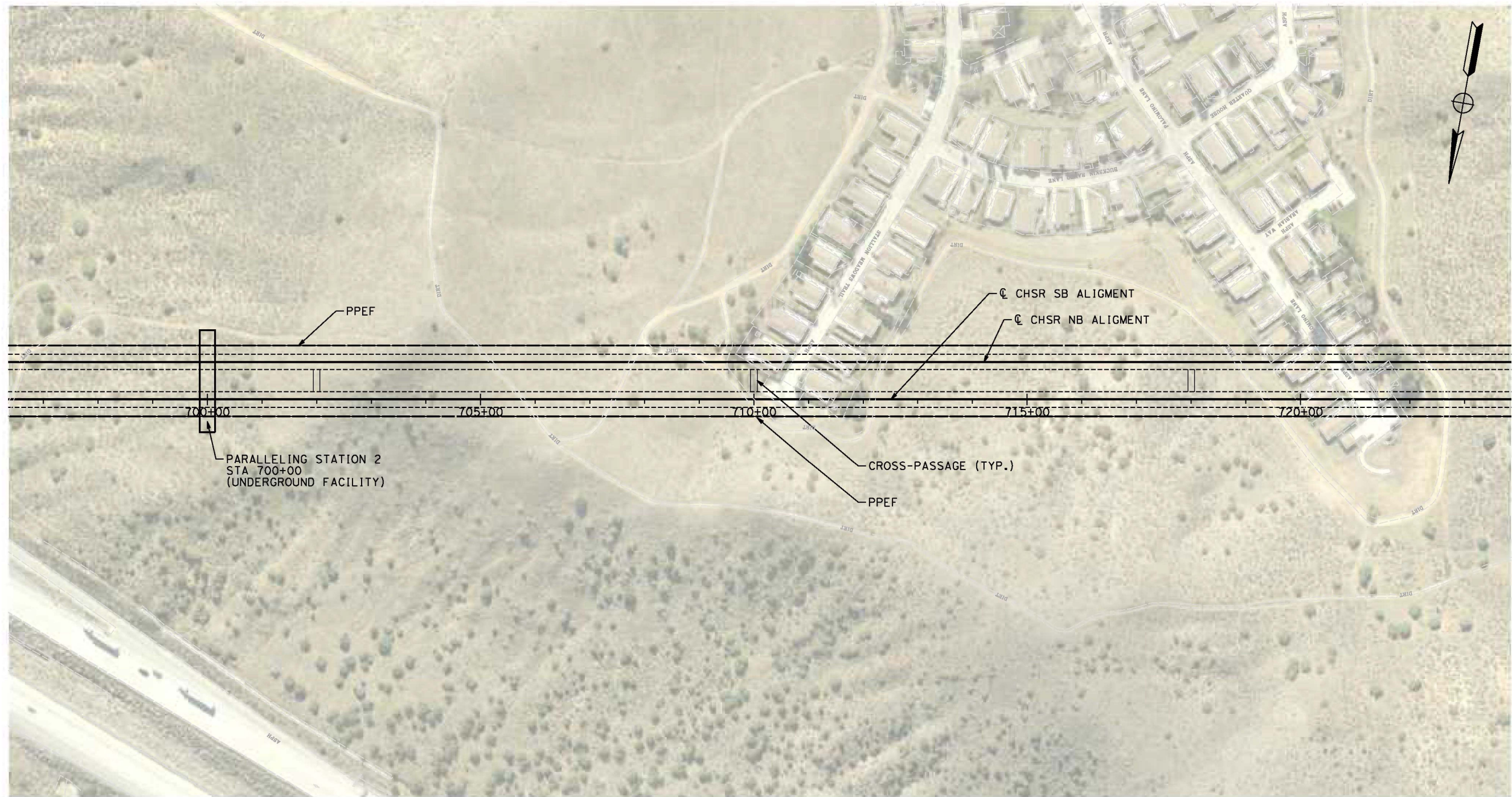
CONTRACT NO.  
HSR14-42  
DRAWING NO.  
TP-F4002-14A  
SCALE  
AS SHOWN  
SHEET NO.



c:\pwworking\chsr\dms28532\PB-TP-04002-SR14A.dgn

3/4/2021 12:05:37 PM

0400074



**PLAN**

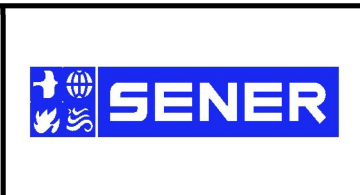


REV	DATE	BY	CHK	APP	DESCRIPTION

DESIGNED BY  
**R. RODRIGUEZ**  
DRAWN BY  
**F. VASQUEZ**  
CHECKED BY  
**A. RELANO**  
IN CHARGE  
**A. RELANO**  
DATE  
**02/26/2021**

**PEPD RECORD SET  
ADDENDUM  
SR14A/E1A/E2A**

**NOT FOR  
CONSTRUCTION**



**CALIFORNIA HIGH-SPEED RAIL PROJECT  
PALMDALE TO BURBANK**

**ALIGNMENT "SR14A"  
TRACTION POWER FACILITIES  
PARALLELING STATION 2**

CONTRACT NO.  
**HSR14-42**

DRAWING NO.  
**TP-04002-14A**

SCALE  
**AS SHOWN**

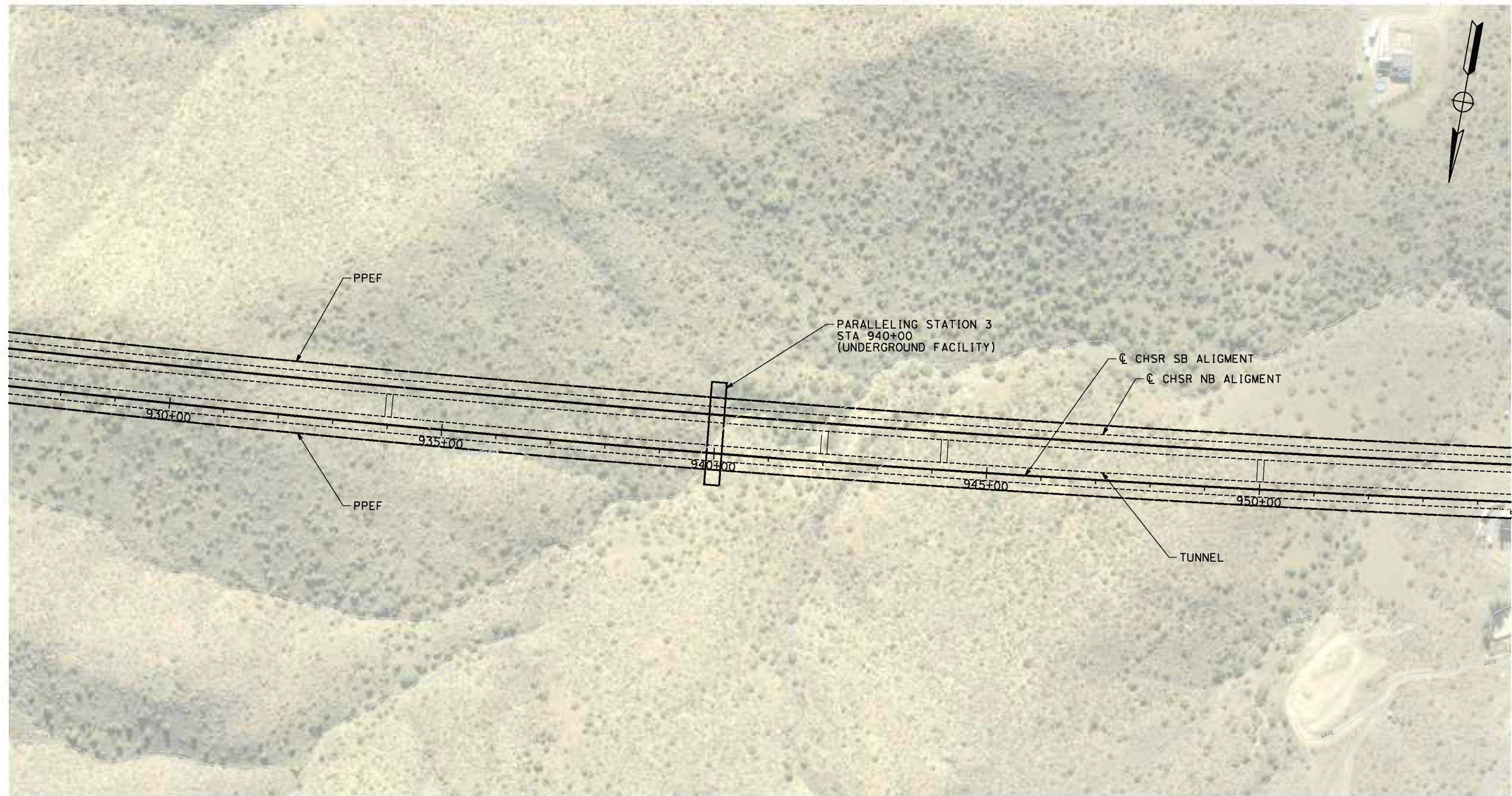
SHEET NO.



c:\pwworking\chsr\dms28532\PB-TP-04003-SR14A.dgn

3/4/2021 12:02:21 PM

0400074



**PLAN**

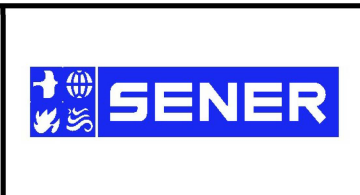


REV	DATE	BY	CHK	APP	DESCRIPTION

DESIGNED BY  
**R. RODRIGUEZ**  
DRAWN BY  
**F. VASQUEZ**  
CHECKED BY  
**A. RELANO**  
IN CHARGE  
**A. RELANO**  
DATE  
**02/26/2021**

**PEPD RECORD SET  
ADDENDUM  
SR14A/E1A/E2A**

**NOT FOR  
CONSTRUCTION**



**CALIFORNIA HIGH-SPEED RAIL PROJECT  
PALMDALE TO BURBANK**

**ALIGNMENT "SR14A"  
TRACTION POWER FACILITIES  
PARALLELING STATION 3**

CONTRACT NO.  
**HSR14-42**

DRAWING NO.  
**TP-04003-14A**

SCALE  
**AS SHOWN**

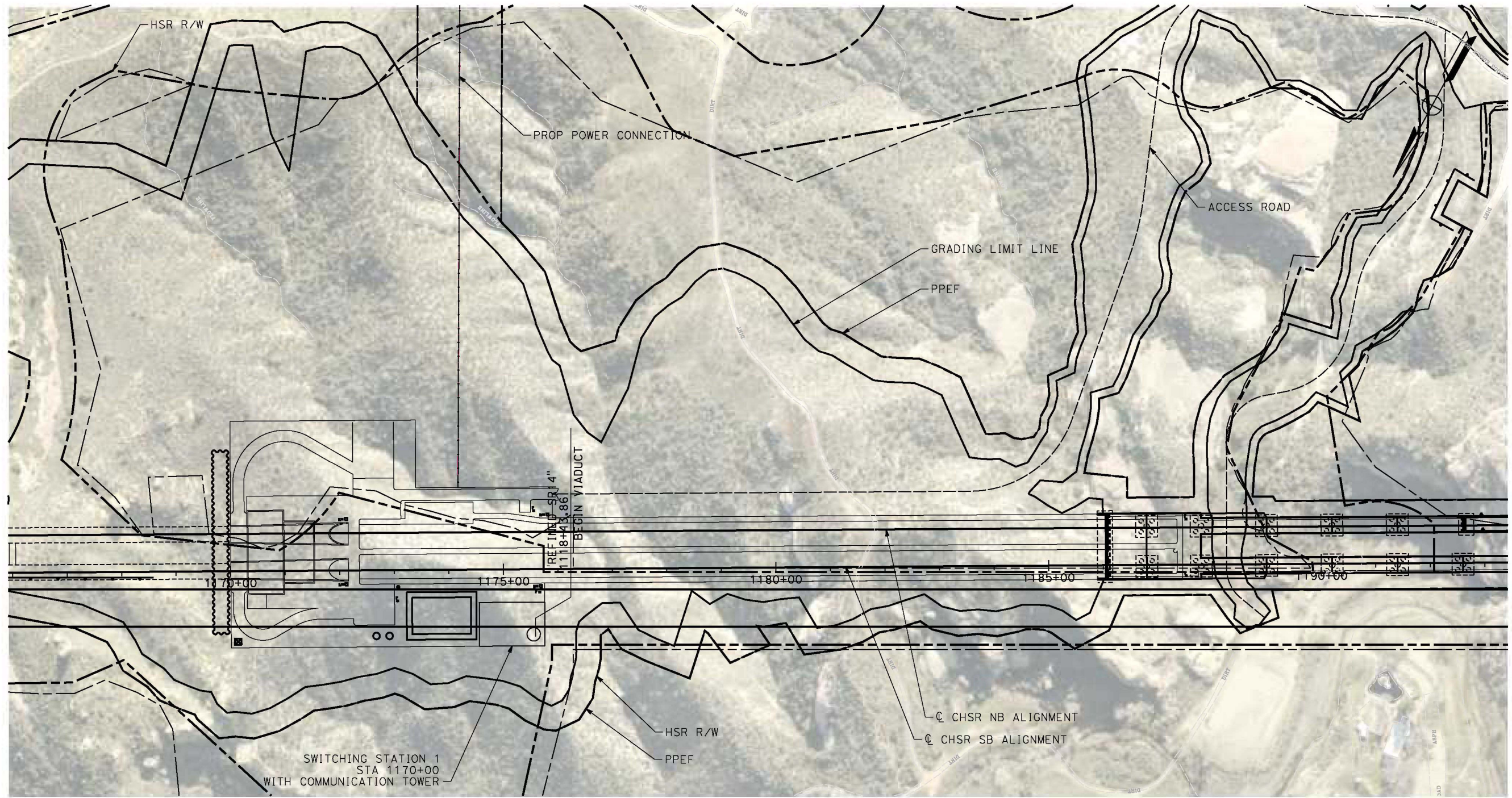
SHEET NO.



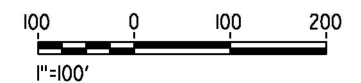
c:\pwworking\chsr\dms28532\TP-04004-SR14A.dgn

3/4/2021 11:58:23 AM

0400074



**PLAN**

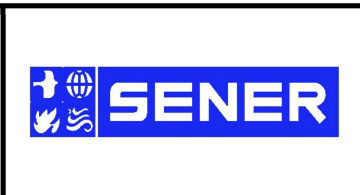


REV	DATE	BY	CHK	APP	DESCRIPTION

DESIGNED BY  
**R. RODRIGUEZ**  
DRAWN BY  
**F. VASQUEZ**  
CHECKED BY  
**A. RELANO**  
IN CHARGE  
**A. RELANO**  
DATE  
**02/26/2021**

**PEPD RECORD SET  
ADDENDUM  
SR14A/E1A/E2A**

**NOT FOR  
CONSTRUCTION**



**CALIFORNIA HIGH-SPEED RAIL PROJECT  
PALMDALE TO BURBANK**

**ALIGNMENT "SR14A"  
TRACTION POWER FACILITIES  
SWITCHING STATION 1**

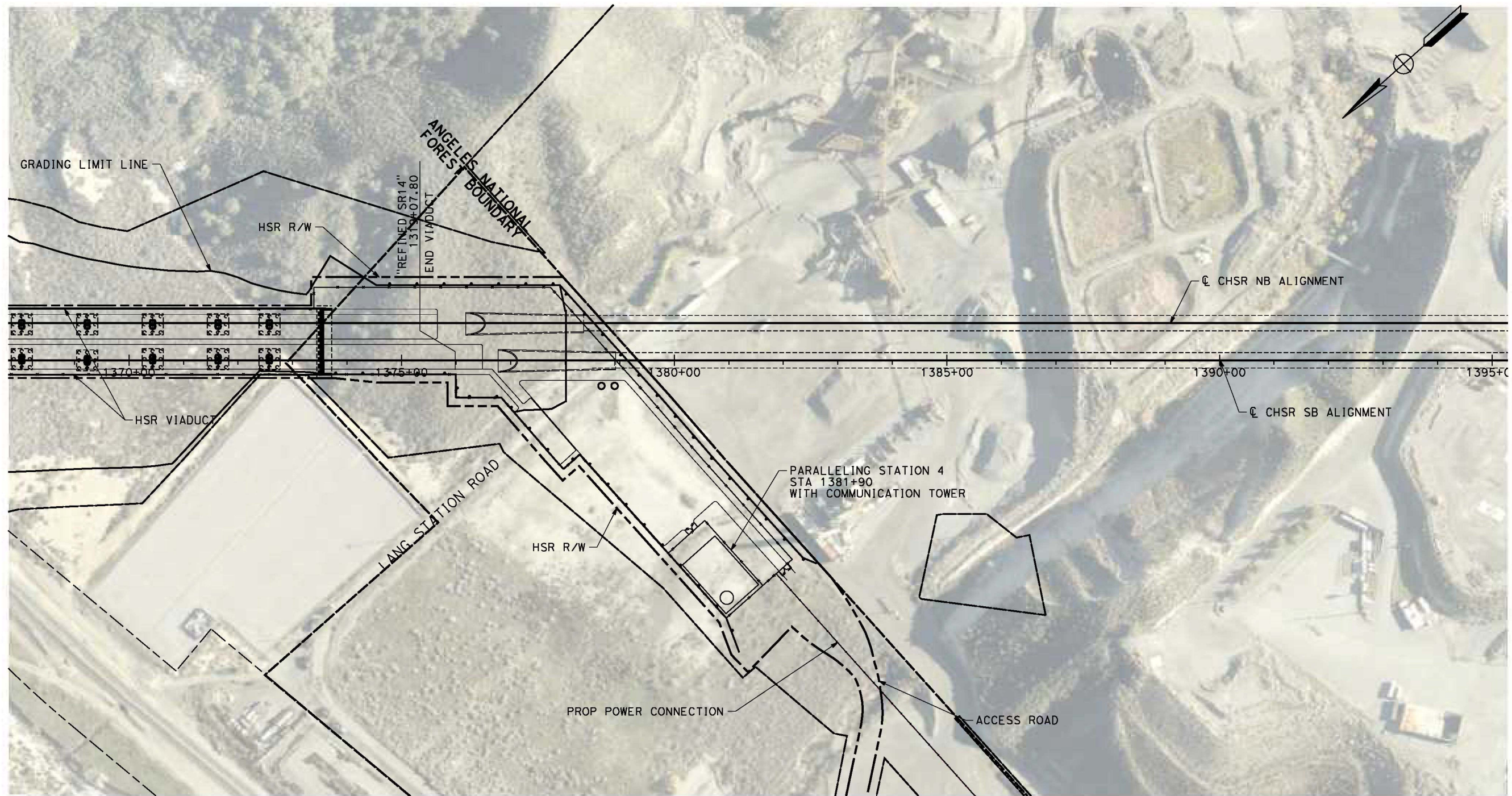
CONTRACT NO.  
**HSR14-42**

DRAWING NO.  
**TP-04004-14A**

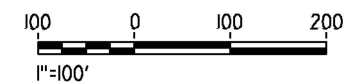
SCALE  
**AS SHOWN**

SHEET NO.





**PLAN**



c:\pwworking\chsr\dms28532\pb-tp-04005-SR14A.dgn

3/4/2021 11:55:14 AM

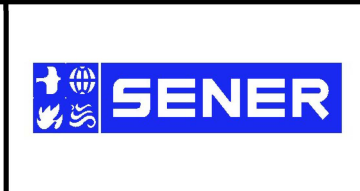
0400074

REV	DATE	BY	CHK	APP	DESCRIPTION

DESIGNED BY  
**R. RODRIGUEZ**  
DRAWN BY  
**F. VASQUEZ**  
CHECKED BY  
**A. RELANO**  
IN CHARGE  
**A. RELANO**  
DATE  
**02/26/2021**

**PEPD RECORD SET  
ADDENDUM  
SR14A/E1A/E2A**

**NOT FOR  
CONSTRUCTION**



**CALIFORNIA HIGH-SPEED RAIL PROJECT  
PALMDALE TO BURBANK**

**ALIGNMENT "SR14A"  
TRACTION POWER FACILITIES  
PARALLELING STATION 4**

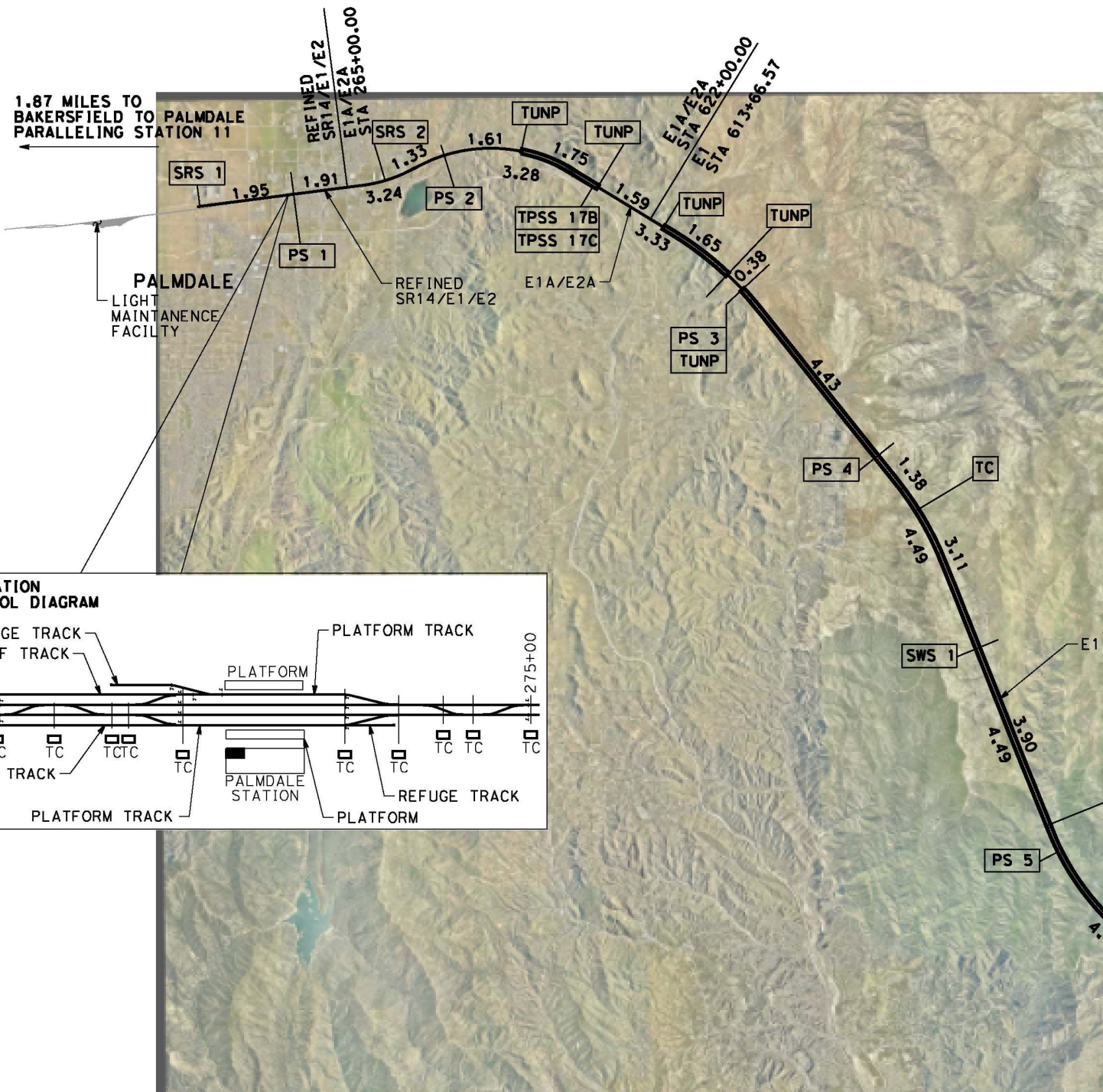
CONTRACT NO.  
**HSR14-42**

DRAWING NO.  
**TP-04005-14A**

SCALE  
**AS SHOWN**

SHEET NO.





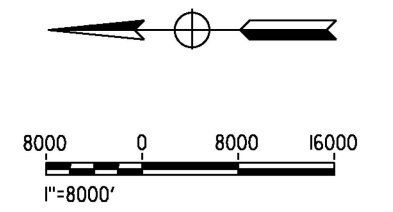
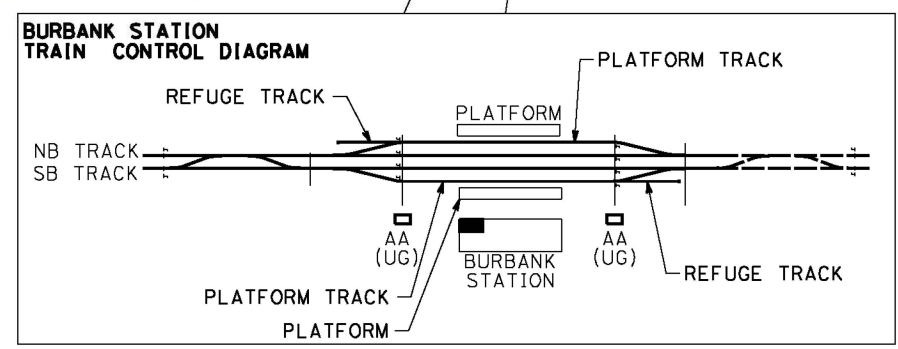
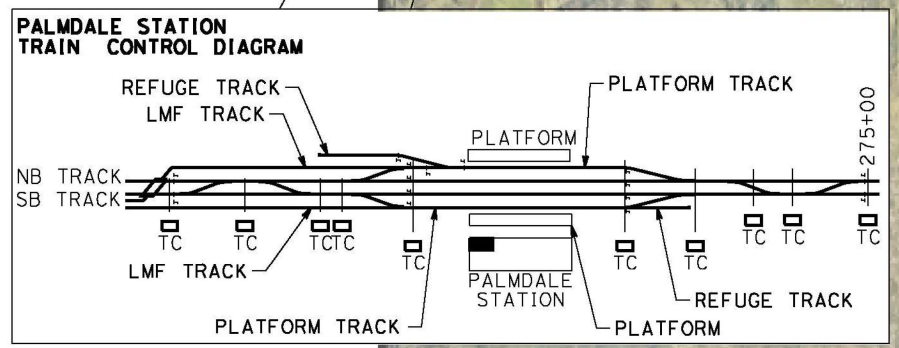
**LEGEND**

RAILWAY SYSTEMS FACILITY	5.0
SPACING (MILES)	
AT-GRADE / ELEVATED	———
UNDERGROUND	=====

**ABBREVIATIONS:**

TPSS:	TRACTION POWER SUBSTATION
PS:	PARALLELING STATION
SWS:	SWITCHING STATION
TUNP:	TUNNEL PORTAL FACILITIES
SRS:	STANDALONE RADIO SITE
TC:	TRAIN CONTROL FACILITY
ATC:	AUTOMATIC TRAIN CONTROL

- NOTES:**
1. SITE STATIONING GIVEN IS APPROXIMATE AND WILL BE FINALIZED IN FUTURE DESIGN PHASE.
  2. IN UNDERGROUND SECTIONS, RF COMMUNICATION WILL BE USING DIRECTIONAL ANTENNAS OR RADIANT CABLES.
  3. TRACTION POWER FACILITIES HAVE RADIO ANTENNAS.
  4. ALL TUNNEL PORTALS (TUNP) REQUIRE SPACE FOR RADIO MASTS AS WELL AS ANTENNAS, PLUS AN ASSOCIATED CABIN TO HOUSE RADIO EQUIPMENT. ATC EQUIPMENT CABINS WILL BE LOCATED AT THESE LOCATIONS TOO.
  5. RADIO EQUIPMENT WITHIN TUNNELS WILL BE INSTALLED IN CROSS PASSAGES EQUIPMENT ROOMS AND AT PARALLELING STATIONS.

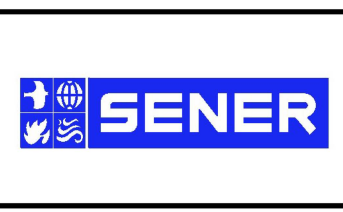


c:\pwworking\chsr\dms28523\PB-TP-D0001-E1A.dgn 3/11/2021 2:38:59 PM 0400074

REV	DATE	BY	CHK	APP	DESCRIPTION

DESIGNED BY  
**R. RODRIGUEZ**  
DRAWN BY  
**F. VASQUEZ**  
CHECKED BY  
**A. RELANO**  
IN CHARGE  
**A. RELANO**  
DATE  
**02/26/2021**

PEPD RECORD SET  
**ADDENDUM**  
**SR14A/E1A/E2A**  
  
**NOT FOR CONSTRUCTION**



**CALIFORNIA HIGH-SPEED RAIL PROJECT**  
**PALMDALE TO BURBANK**  
ALIGNMENT "E1A"  
  
TRACTION POWER FACILITIES  
LOCATION LAYOUT

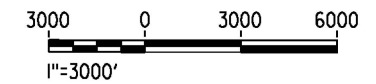
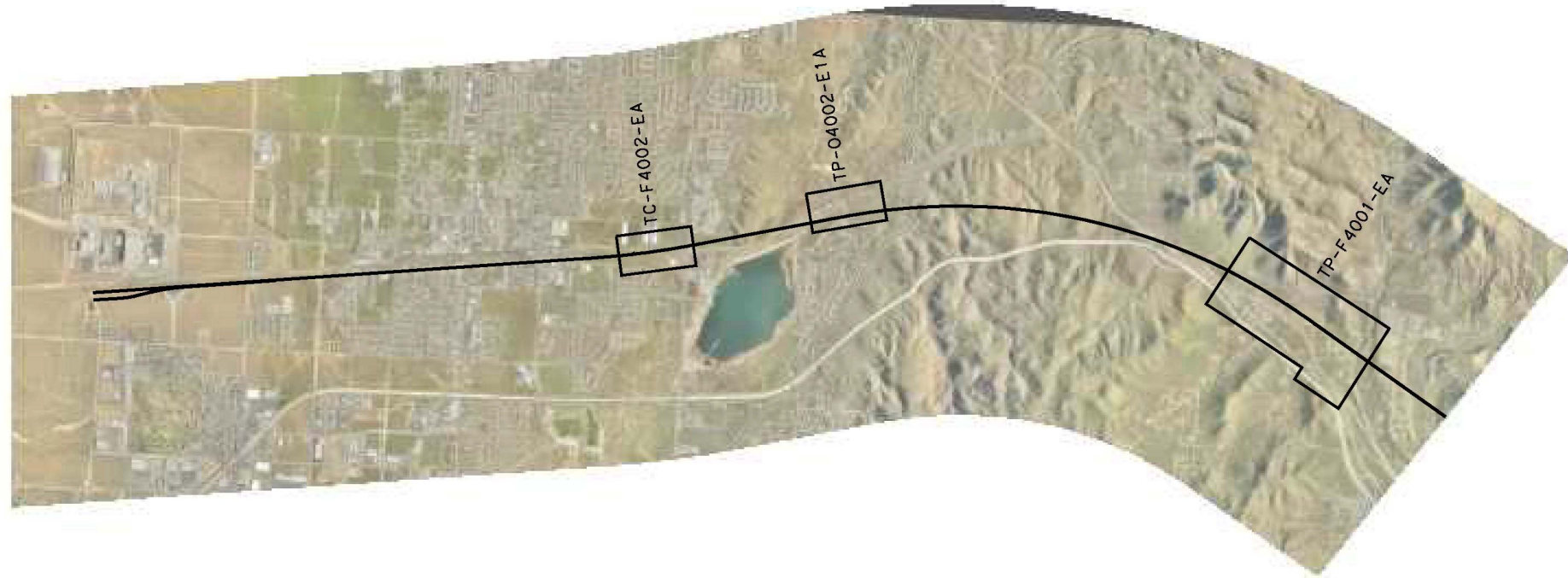
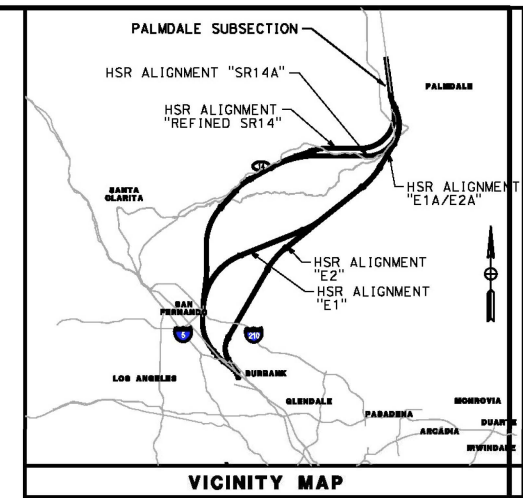
CONTRACT NO.  
**HSR14-42**  
DRAWING NO.  
**TP-D0001-E1A**  
SCALE  
**AS SHOWN**  
SHEET NO.



c:\pwworking\chsr\dms28523\PB-TP-B6001-E1A.dgn

3/4/2021 11:48:00 AM

0400074



REV	DATE	BY	CHK	APP	DESCRIPTION

DESIGNED BY  
**R. RODRIGUEZ**  
DRAWN BY  
**F. VASQUEZ**  
CHECKED BY  
**A. RELANO**  
IN CHARGE  
**A. RELANO**  
DATE  
**02/26/2021**

**PEPD RECORD SET  
ADDENDUM  
SR14A/E1A/E2A**

**NOT FOR  
CONSTRUCTION**



**CALIFORNIA HIGH-SPEED RAIL PROJECT**  
**PALMDALE TO BURBANK**  
ALIGNMENT "E1A/E2A"

RAILWAY SYSTEMS  
KEY MAP

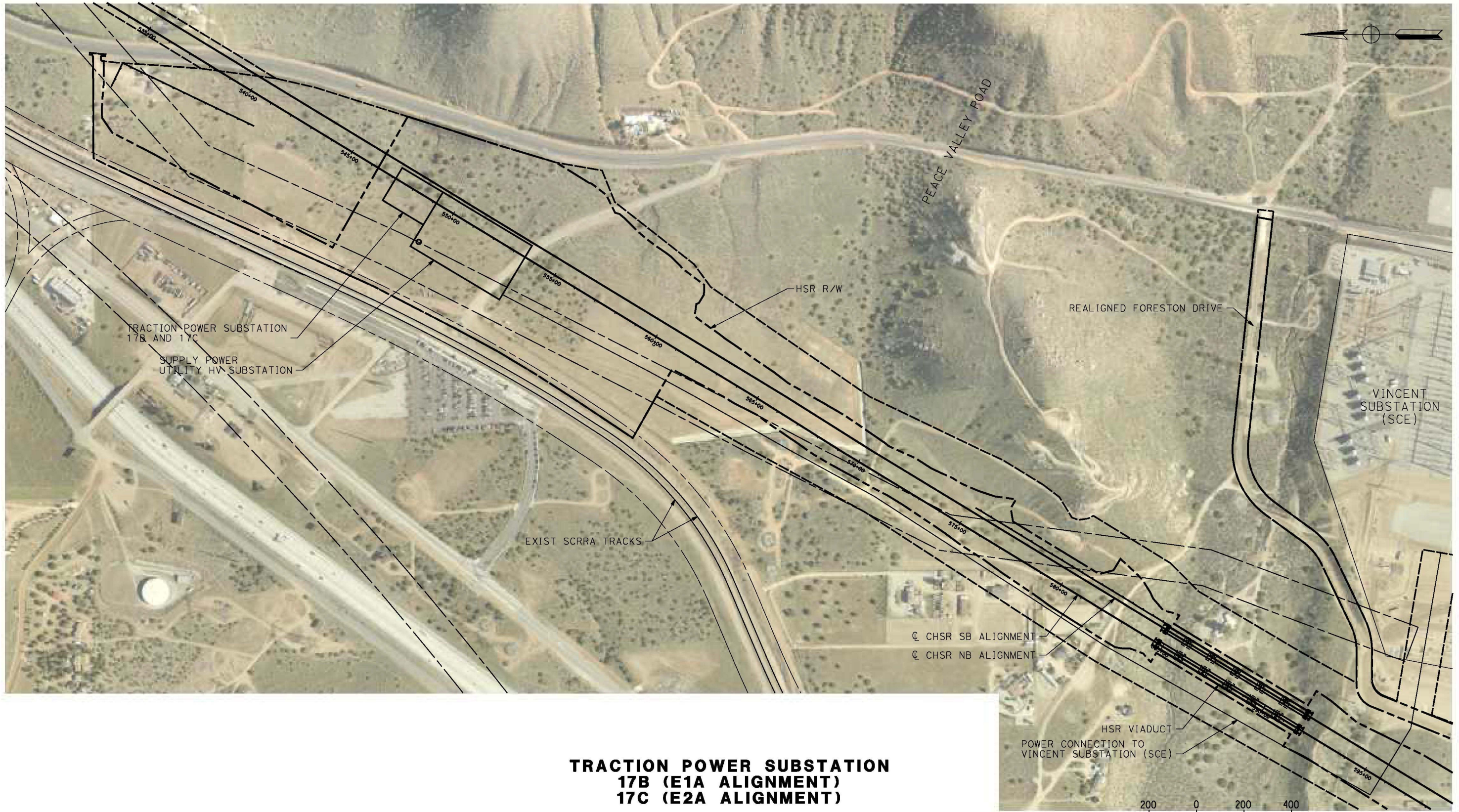
CONTRACT NO.  
**HSR14-42**

DRAWING NO.  
**TP-B6001-EA**

SCALE  
**AS SHOWN**

SHEET NO.





**TRACTION POWER SUBSTATION  
17B (E1A ALIGNMENT)  
17C (E2A ALIGNMENT)**

c:\pwworking\chsr\dms28523\PB-TP-F4001-E1A.dgn

3/4/2021 11:46:15 AM

0400074

REV	DATE	BY	CHK	APP	DESCRIPTION

DESIGNED BY  
**R. RODRIGUEZ**  
DRAWN BY  
**F. VASQUEZ**  
CHECKED BY  
**A. RELANO**  
IN CHARGE  
**A. RELANO**  
DATE  
**02/26/2021**

**PEPD RECORD SET  
ADDENDUM  
SR14A/E1A/E2A**  
  
**NOT FOR  
CONSTRUCTION**



**CALIFORNIA HIGH-SPEED RAIL PROJECT  
PALMDALE TO BURBANK**  
ALIGNMENT "E1A/E2A"  
TRACTION POWER FACILITIES  
TRACTION POWER SUBSTATION 17B/17C  
VINCENT SUBSTATION

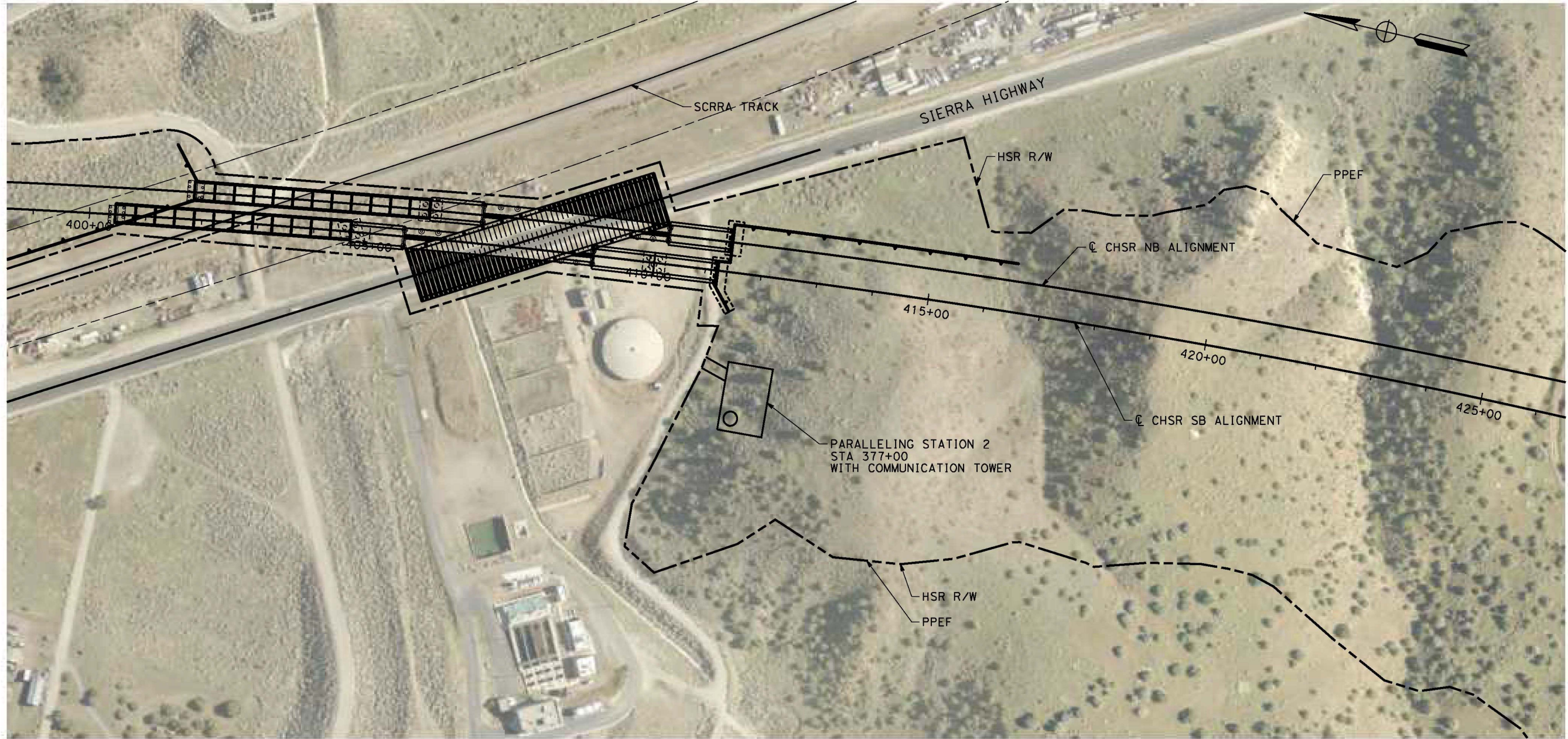
CONTRACT NO.  
**HSR14-42**  
DRAWING NO.  
**TP-F4001-EA**  
SCALE  
**AS SHOWN**  
SHEET NO.



c:\pwworking\chsr\dms28523\PB-TP-04002-E1A.dgn

3/4/2021 11:42:40 AM

0400074



**PLAN**

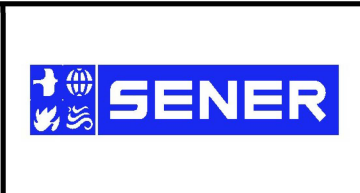


REV	DATE	BY	CHK	APP	DESCRIPTION

DESIGNED BY  
**R. RODRIGUEZ**  
DRAWN BY  
**F. VASQUEZ**  
CHECKED BY  
**A. RELANO**  
IN CHARGE  
**A. RELANO**  
DATE  
**02/26/2021**

**PEPD RECORD SET  
ADDENDUM  
SR14A/E1A/E2A**

**NOT FOR  
CONSTRUCTION**



**CALIFORNIA HIGH-SPEED RAIL PROJECT  
PALMDALE TO BURBANK**

**ALIGNMENT "E1A"  
TRACTION POWER FACILITIES  
PARALLELING STATION 2**

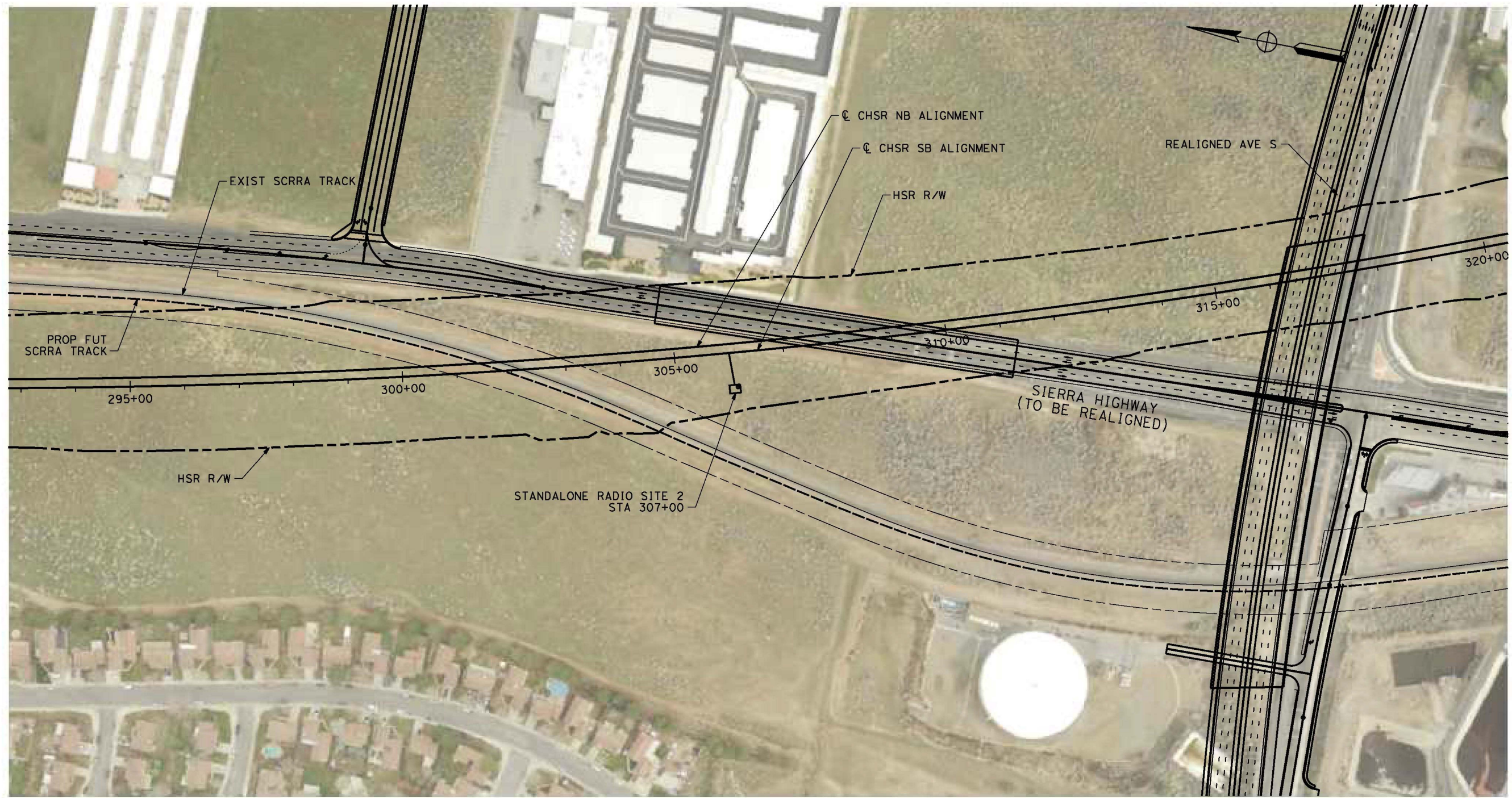
CONTRACT NO.  
**HSR14-42**

DRAWING NO.  
**TP-04002-E1A**

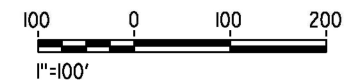
SCALE  
**AS SHOWN**

SHEET NO.





**PLAN**



c:\pwworking\chsr\dms28523\PB-TC-F4002-E1A.dgn

3/4/2021 11:36:48 AM

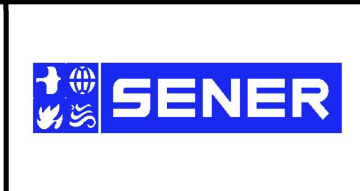
0400074

REV	DATE	BY	CHK	APP	DESCRIPTION

DESIGNED BY  
**R. RODRIGUEZ**  
DRAWN BY  
**F. VASQUEZ**  
CHECKED BY  
**A. RELANO**  
IN CHARGE  
**A. RELANO**  
DATE  
**02/26/2021**

**PEPD RECORD SET  
ADDENDUM  
SR14A/E1A/E2A**

**NOT FOR  
CONSTRUCTION**



**CALIFORNIA HIGH-SPEED RAIL PROJECT  
PALMDALE TO BURBANK**

ALIGNMENT "E1A/E2A"  
TRAIN CONTROL SYSTEM  
STANDALONE RADIO SITE 2

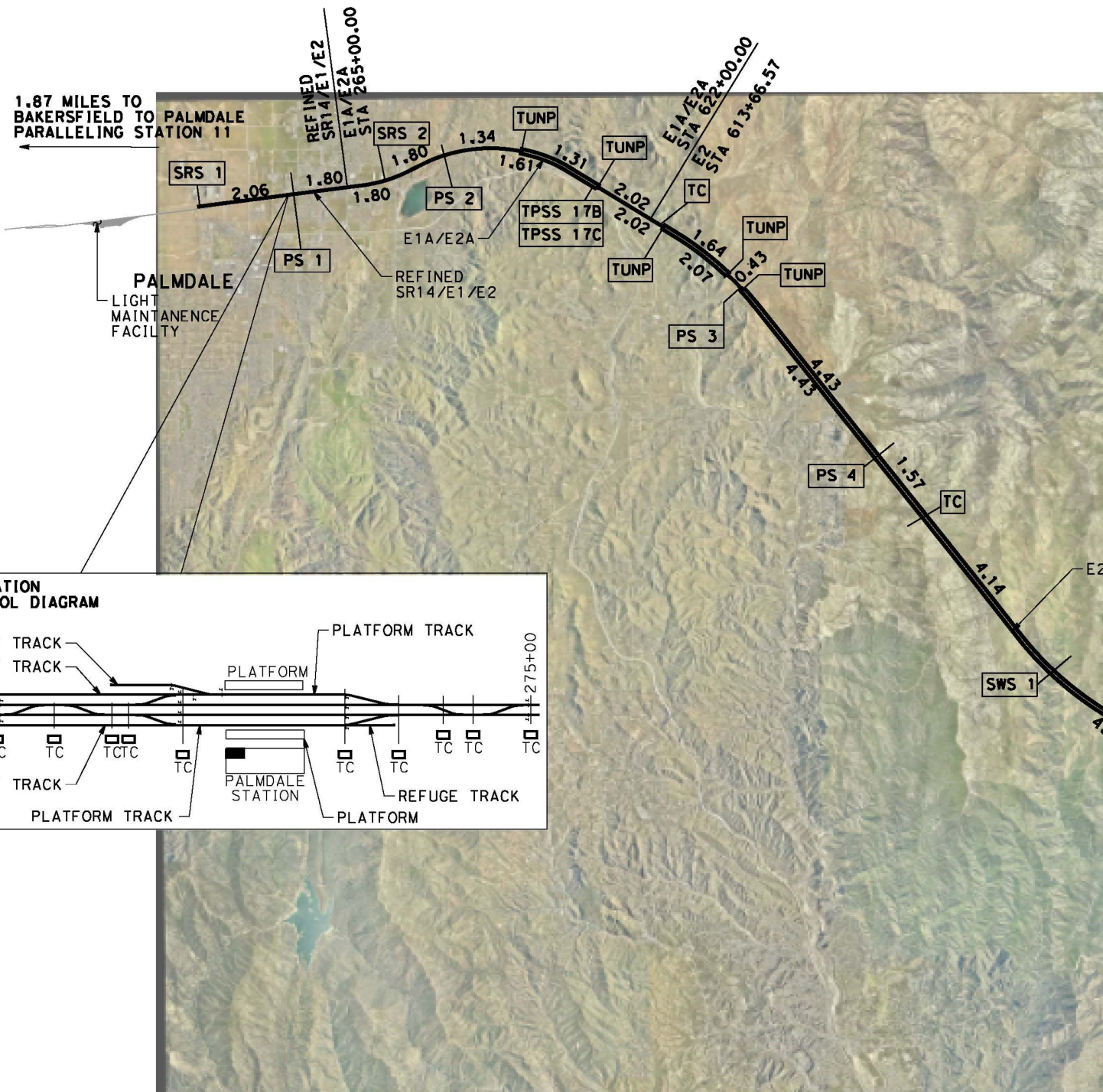
CONTRACT NO.  
**HSR14-42**

DRAWING NO.  
**TC-F4002-EA**

SCALE  
**AS SHOWN**

SHEET NO.





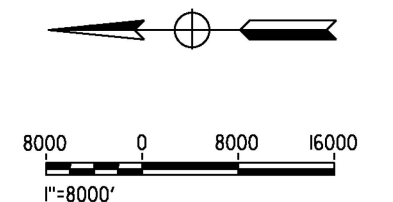
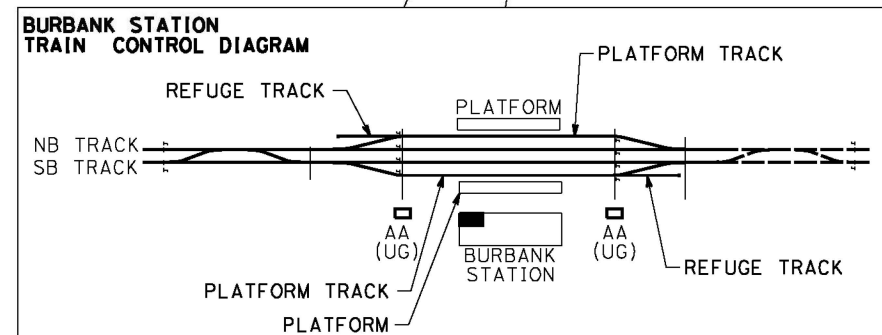
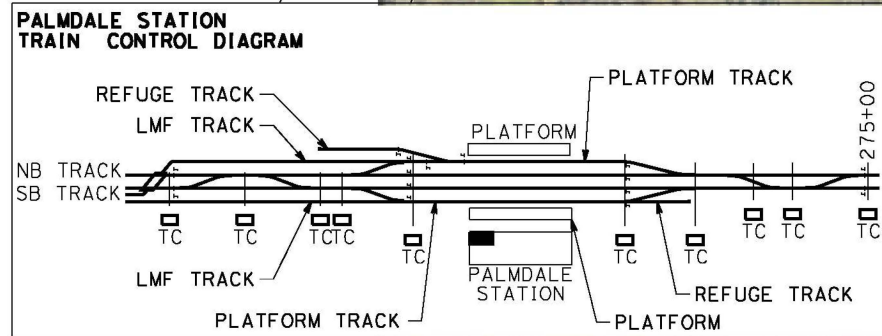
**LEGEND**

RAILWAY SYSTEMS FACILITY	5.0
SPACING (MILES)	
AT-GRADE / ELEVATED	———
UNDERGROUND	=====

**ABBREVIATIONS:**

TPSS:	TRACTION POWER SUBSTATION
PS:	PARALLELING STATION
SWS:	SWITCHING STATION
TUNP:	TUNNEL PORTAL FACILITIES
SRS:	STANDALONE RADIO SITE
TC:	TRAIN CONTROL FACILITY
ATC:	AUTOMATIC TRAIN CONTROL

- NOTES:**
1. SITE STATIONING GIVEN IS APPROXIMATE AND WILL BE FINALIZED IN FUTURE DESIGN PHASE.
  2. IN UNDERGROUND SECTIONS, RF COMMUNICATION WILL BE USING DIRECTIONAL ANTENNAS OR RADIANT CABLES.
  3. TRACTION POWER FACILITIES HAVE RADIO ANTENNAS.
  4. ALL TUNNEL PORTALS (TUNP) REQUIRE SPACE FOR RADIO MASTS AS WELL AS ANTENNAS, PLUS AN ASSOCIATED CABIN TO HOUSE RADIO EQUIPMENT. ATC EQUIPMENT CABINS WILL BE LOCATED AT THESE LOCATIONS TOO.
  5. RADIO EQUIPMENT WITHIN TUNNELS WILL BE INSTALLED IN CROSS PASSAGES EQUIPMENT ROOMS AND AT PARALLELING STATIONS.



c:\pwworking\chsr\vdms28523\PB-TP-D0001-E2A.dgn 3/11/2021 2:41:41 PM 0400074

REV	DATE	BY	CHK	APP	DESCRIPTION

DESIGNED BY  
**R. RODRIGUEZ**

DRAWN BY  
**F. VASQUEZ**

CHECKED BY  
**A. RELANO**

IN CHARGE  
**A. RELANO**

DATE  
**02/26/2021**

**PEPD RECORD SET  
ADDENDUM  
SR14A/E1A/E2A**

**NOT FOR  
CONSTRUCTION**



**CALIFORNIA HIGH-SPEED RAIL PROJECT**

**PALMDALE TO BURBANK**

ALIGNMENT "E2A"

TRACTION POWER FACILITIES  
LOCATION LAYOUT

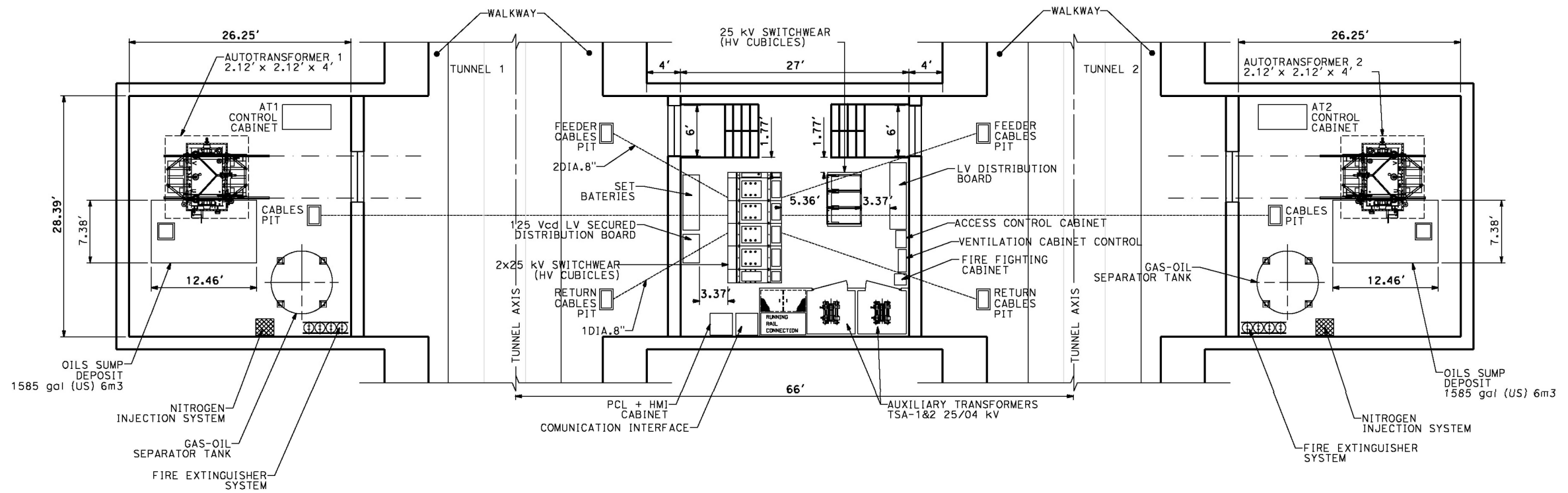
CONTRACT NO.  
**HSR14-42**

DRAWING NO.  
**TP-D0001-E2A**

SCALE  
**AS SHOWN**

SHEET NO.





**UNDERGROUND PARALLELING STATION**

c:\pwworking\chsr\dms28892\p\TP-D5001.dgn

1/26/2021 10:27:05 AM

0400074

REV	DATE	BY	CHK	APP	DESCRIPTION

DESIGNED BY  
**R. RODRIGUEZ**  
DRAWN BY  
**F. VASQUEZ**  
CHECKED BY  
**A. RELANO**  
IN CHARGE  
**A. RELANO**  
DATE  
**02/26/2021**

**PEPD RECORD SET  
ADDENDUM  
SR14A/E1A/E2A**

**NOT FOR  
CONSTRUCTION**



**CALIFORNIA HIGH-SPEED RAIL PROJECT  
PALMDALE TO BURBANK**  
ALIGNMENT "SR14A/E1A/E2A"

**UNDERGROUND TRACTION POWER FACILITIES  
DETAIL 1**

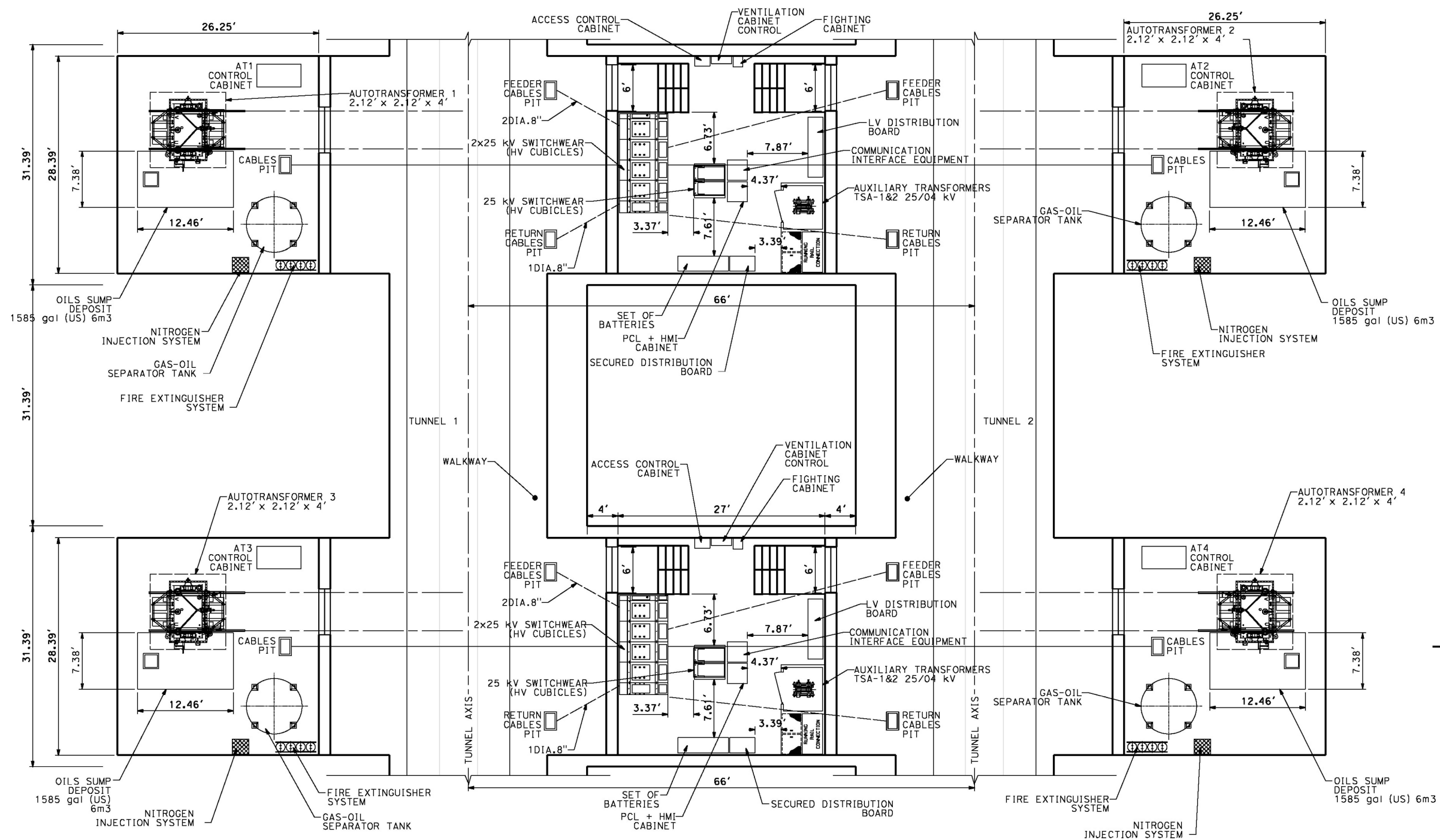
CONTRACT NO.  
**HSR14-42**

DRAWING NO.  
**TP-D5001**

SCALE  
**NOT TO SCALE**

SHEET NO.





### UNDERGROUND SWITCHING STATION

c:\pwworking\chsr\dms28892\p\TP-D5002.dgn  
 1/26/2021 10:27:09 AM  
 0400074

REV	DATE	BY	CHK	APP	DESCRIPTION

DESIGNED BY  
**R. RODRIGUEZ**  
 DRAWN BY  
**F. VASQUEZ**  
 CHECKED BY  
**A. RELANO**  
 IN CHARGE  
**A. RELANO**  
 DATE  
**02/26/2021**

**PEPD RECORD SET  
 ADDENDUM  
 SR14A/E1A/E2A**  
  
**NOT FOR  
 CONSTRUCTION**



**CALIFORNIA HIGH-SPEED RAIL PROJECT**  
**PALMDALE TO BURBANK**  
 ALIGNMENT "SR14A/E1A/E2A"  
  
 UNDERGROUND TRACTION POWER FACILITIES  
 DETAIL 2

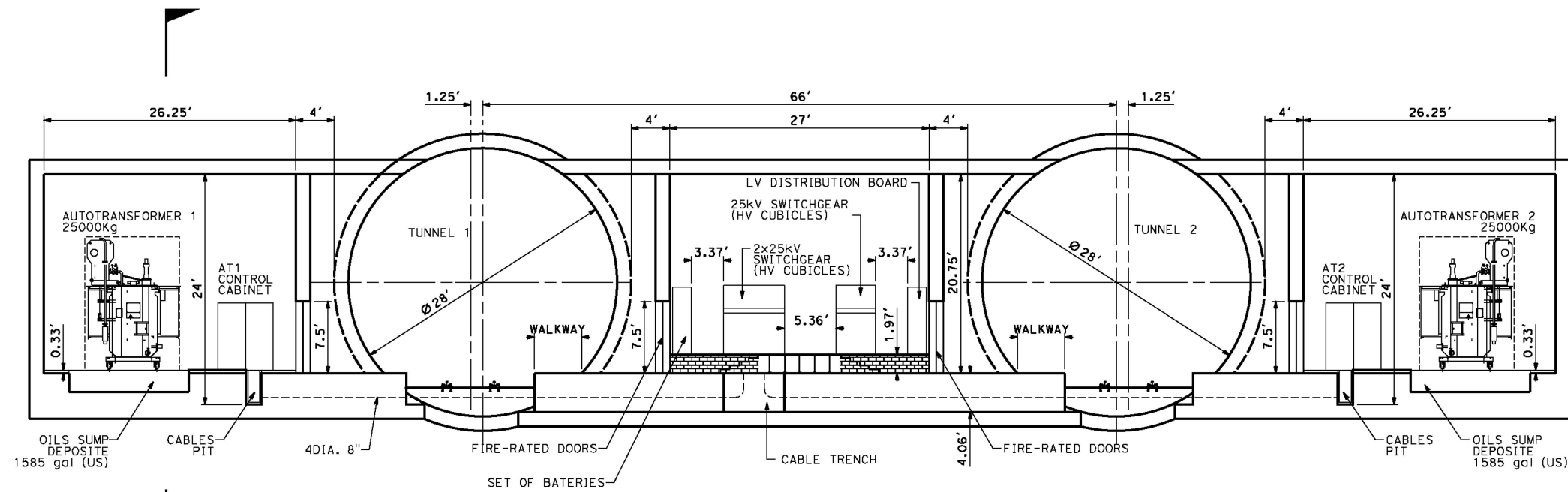
CONTRACT NO.  
**HSR14-42**  
 DRAWING NO.  
**TP-D5002**  
 SCALE  
**NOT TO SCALE**  
 SHEET NO.



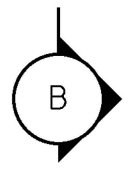
c:\pwworking\chsr\dms28892\PB-TP-D5003.dgn

1/26/2021 10:27:13 AM

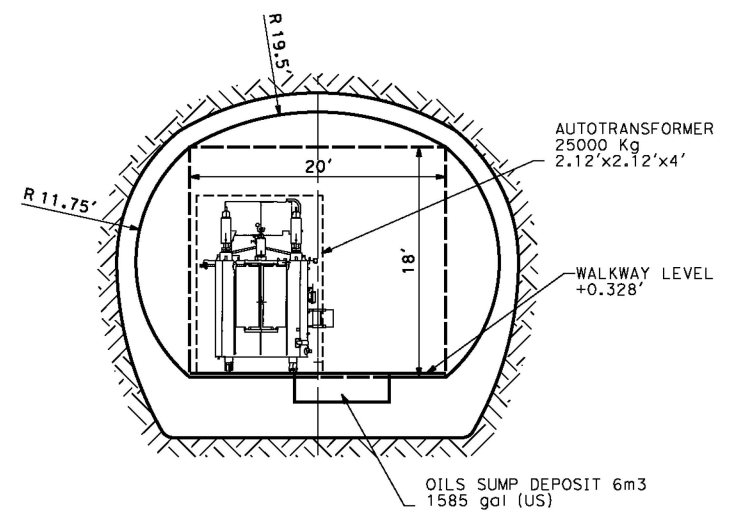
0400074



GENERAL TEXT  
(0.140 x Scale)



**SECTION A**



**SECTION B**

REV	DATE	BY	CHK	APP	DESCRIPTION

DESIGNED BY  
**R. RODRIGUEZ**  
DRAWN BY  
**F. VASQUEZ**  
CHECKED BY  
**A. RELANO**  
IN CHARGE  
**A. RELANO**  
DATE  
**02/26/2021**

PEPD RECORD SET  
ADDENDUM  
SR14A/E1A/E2A  
  
NOT FOR  
CONSTRUCTION



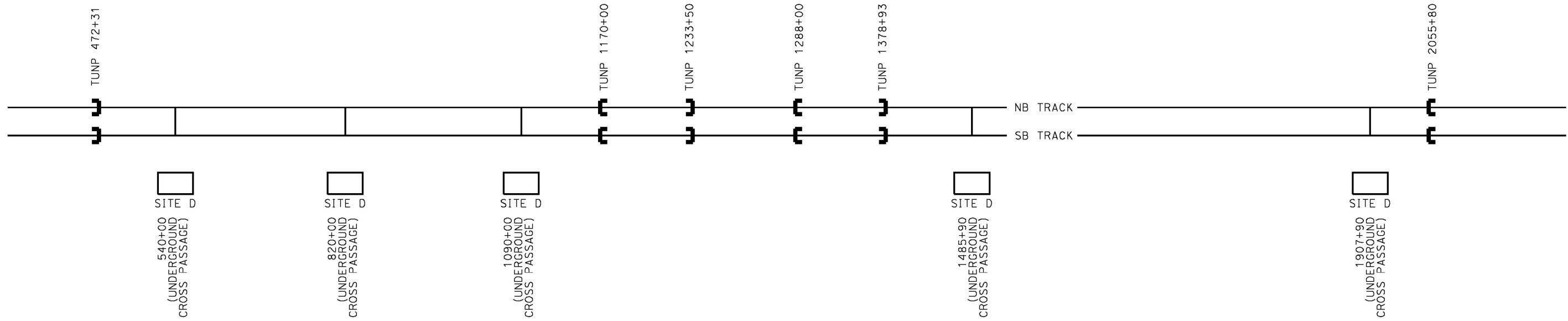
**CALIFORNIA HIGH-SPEED RAIL PROJECT**  
**PALMDALE TO BURBANK**  
ALIGNMENT "SR14A/E1A/E2A"  
  
UNDERGROUND TRACTION POWER FACILITIES  
DETAIL 3

CONTRACT NO.  
**HSR14-42**  
DRAWING NO.  
**TP-D5003**  
SCALE  
**NOT TO SCALE**  
SHEET NO.



← TO PALMDALE STATION

TO BURBANK STATION →



**SR14A ALIGNMENT**

c:\pwworking\chsr\dms28892\PB-TC-E6002.dgn

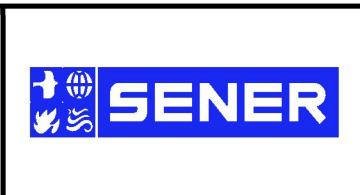
1/26/2021 10:26:50 AM

0400074

REV	DATE	BY	CHK	APP	DESCRIPTION

DESIGNED BY  
**R. RODRIGUEZ**  
DRAWN BY  
**F. VASQUEZ**  
CHECKED BY  
**A. RELANO**  
IN CHARGE  
**A. RELANO**  
DATE  
**02/26/2021**

**PEPD RECORD SET  
ADDENDUM  
SR14A/E1A/E2A**  
  
**NOT FOR  
CONSTRUCTION**



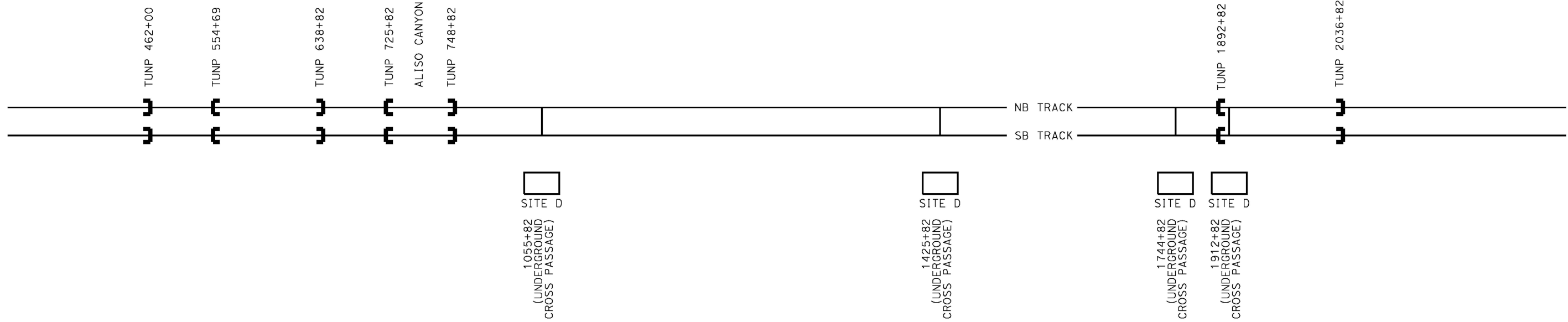
**CALIFORNIA HIGH-SPEED RAIL PROJECT  
PALMDALE TO BURBANK**  
ALIGNMENT "SR14A"  
TRAIN CONTROL SYSTEM  
INTERLOCKING SITES  
"SITE D" LOCATIONS

CONTRACT NO.  
**HSR14-42**  
DRAWING NO.  
**TC-E6002**  
SCALE  
**NOT TO SCALE**  
SHEET NO.



← TO PALMDALE STATION

TO BURBANK STATION →



**E1A ALIGNMENT**

c:\pwworking\chsr\dms28892\PB-TC-E6003.dgn

1/26/2021 10:26:54 AM

0400074

REV	DATE	BY	CHK	APP	DESCRIPTION

DESIGNED BY  
**R. RODRIGUEZ**  
DRAWN BY  
**F. VASQUEZ**  
CHECKED BY  
**A. RELANO**  
IN CHARGE  
**A. RELANO**  
DATE  
**02/26/2021**

PEPD RECORD SET  
ADDENDUM  
SR14A/E1A/E2A  
  
**NOT FOR CONSTRUCTION**



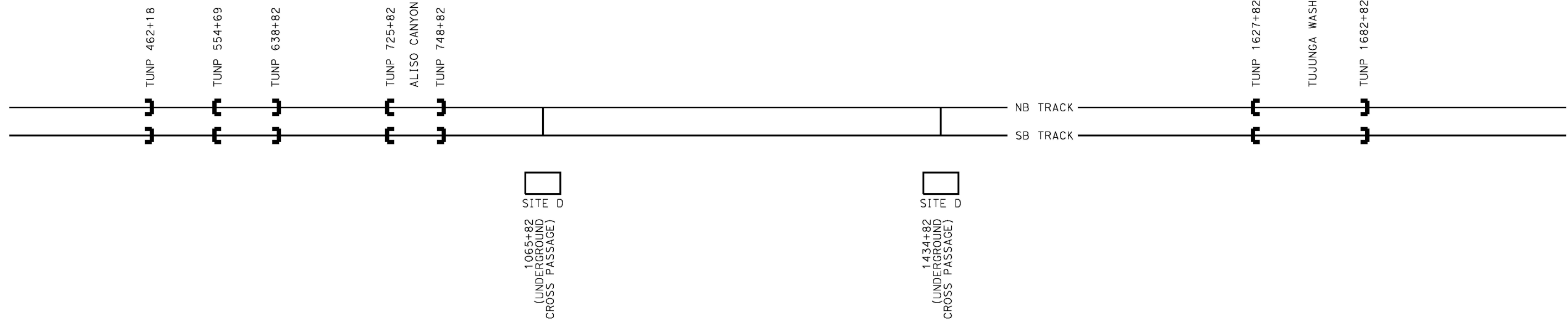
**CALIFORNIA HIGH-SPEED RAIL PROJECT**  
**PALMDALE TO BURBANK**  
ALIGNMENT "E1A"  
TRAIN CONTROL SYSTEM  
INTERLOCKING SITES  
"SITE D" LOCATIONS

CONTRACT NO.  
**HSR14-42**  
DRAWING NO.  
**TC-E6003**  
SCALE  
**NOT TO SCALE**  
SHEET NO.



← TO PALMDALE STATION

TO BURBANK STATION →



**E2A ALIGNMENT**

c:\pwworking\chsr\dms28892\PB-TC-E6004.dgn

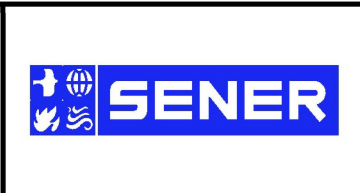
1/26/2021 10:26:58 AM

0400074

REV	DATE	BY	CHK	APP	DESCRIPTION

DESIGNED BY  
**R. RODRIGUEZ**  
DRAWN BY  
**F. VASQUEZ**  
CHECKED BY  
**A. RELANO**  
IN CHARGE  
**A. RELANO**  
DATE  
**02/26/2021**

PEPD RECORD SET  
ADDENDUM  
SR14A/E1A/E2A  
  
**NOT FOR CONSTRUCTION**



**CALIFORNIA HIGH-SPEED RAIL PROJECT**  
**PALMDALE TO BURBANK**  
ALIGNMENT "E2A"  
TRAIN CONTROL SYSTEM  
INTERLOCKING SITES  
"SITE D" LOCATIONS

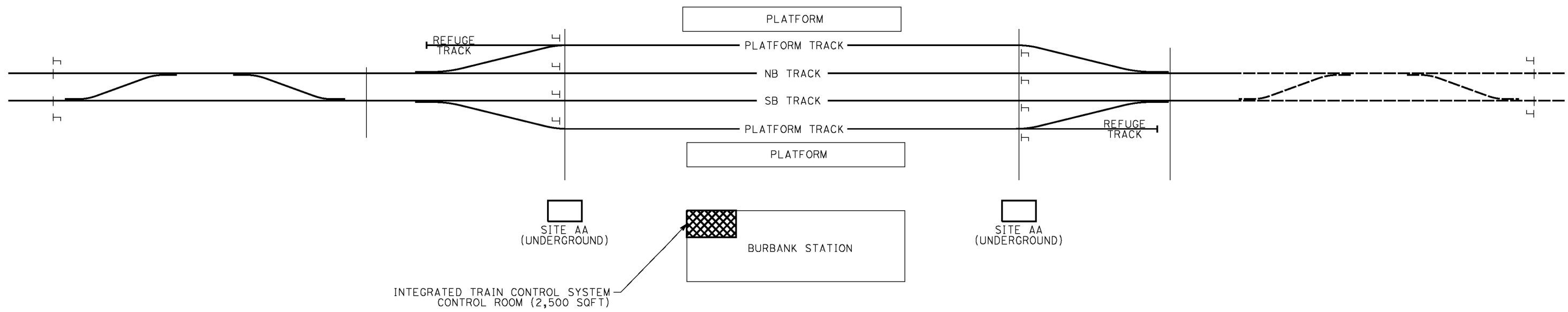
CONTRACT NO.  
**HSR14-42**  
DRAWING NO.  
**TC-E6004**  
SCALE  
**NOT TO SCALE**  
SHEET NO.



c:\pwworking\chsr\dms28892\PB-TC-E6005.dgn

3/4/2021 11:29:18 AM

0400074



**BURBANK STATION**

**NOTE:**

1. THIS SCHEMATIC DIAGRAM IS APPLICABLE TO ALL ALTERNATIVES.

REV	DATE	BY	CHK	APP	DESCRIPTION

DESIGNED BY  
**R. RODRIGUEZ**  
DRAWN BY  
**F. VASQUEZ**  
CHECKED BY  
**A. RELANO**  
IN CHARGE  
**A. RELANO**  
DATE  
**02/26/2021**

**PEPD RECORD SET  
ADDENDUM  
SR14A/E1A/E2A**

**NOT FOR  
CONSTRUCTION**



**CALIFORNIA HIGH-SPEED RAIL PROJECT  
PALMDALE TO BURBANK**

TRAIN CONTROL SYSTEM  
INTERLOCKING SITES  
BURBANK STATION

CONTRACT NO.  
**HSR14-42**

DRAWING NO.  
**TC-E6005**

SCALE  
**NOT TO SCALE**

SHEET NO.