

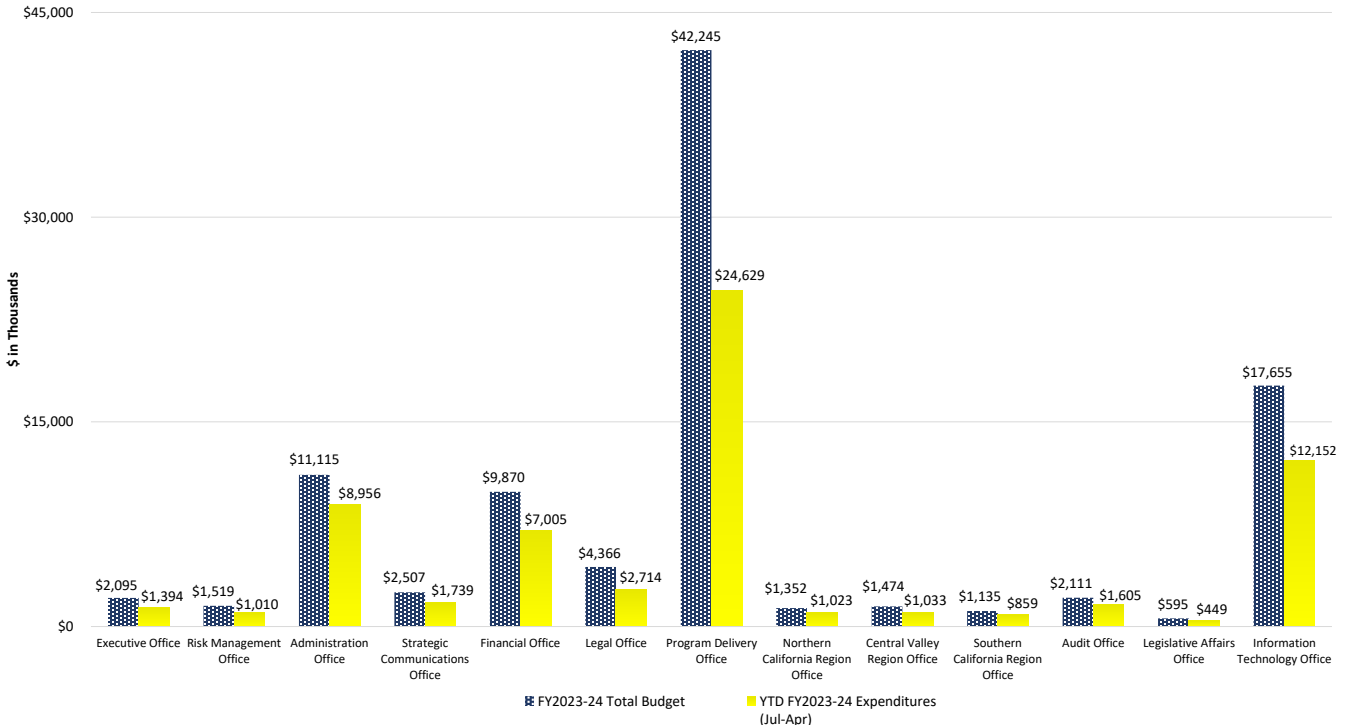
Data through April 30, 2024

Percentage of Fiscal Year Completed: 83.3%

**FY2023-24 Administrative Budget and Expenditures Summary**

Current Year 2023-24 (\$ in Thousands)	Notes	FY2023-24 Total Budget A	Monthly Expenditures (Apr) B	YTD FY2023-24 Expenditures (Jul - Apr) C	Total Remaining Budget (A - C)	YTD % of Budget Expended (C / A)	FY2023-24 Forecast (May - Jun) D	FY2023-24 YTD Expenditures & Forecast (C + D)
Executive Office		\$2,095	\$146	\$1,394	\$702	66.5%	\$444	\$1,838
Risk Management Office		\$1,519	\$102	\$1,010	\$510	66.5%	\$258	\$1,268
Administration Office	2	\$11,115	\$1,093	\$8,956	\$2,159	80.6%	\$1,669	\$10,625
Strategic Communications Office		\$2,507	\$168	\$1,739	\$768	69.4%	\$562	\$2,302
Financial Office	2	\$9,870	\$692	\$7,005	\$2,865	71.0%	\$2,542	\$9,547
Legal Office		\$4,366	\$307	\$2,714	\$1,652	62.2%	\$1,351	\$4,065
Program Delivery Office		\$42,245	\$2,597	\$24,629	\$17,615	58.3%	\$9,894	\$34,524
Northern California Region Office		\$1,352	\$117	\$1,023	\$329	75.7%	\$228	\$1,251
Central Valley Region Office	2	\$1,474	\$97	\$1,033	\$441	70.1%	\$255	\$1,288
Southern California Region Office		\$1,135	\$71	\$859	\$275	75.7%	\$173	\$1,032
Audit Office		\$2,111	\$167	\$1,605	\$506	76.0%	\$359	\$1,964
Legislative Affairs Office	2	\$595	\$45	\$449	\$146	75.5%	\$146	\$595
Information Technology Office		\$17,655	\$1,437	\$12,152	\$5,503	68.8%	\$4,524	\$16,675
<b>TOTAL</b>	<b>1, 2</b>	<b>\$98,040</b>	<b>\$7,041</b>	<b>\$64,570</b>	<b>\$33,470</b>	<b>65.9%</b>	<b>\$22,404</b>	<b>\$86,974</b>

**Expenditures vs. Total Budget  
FY2023-24**



#

**Footnotes**

- Statewide employee bargaining contracts are negotiated with the Administration on a periodic basis. Changes to these agreements impact the Authority's budget and updates to the budget are reflected subsequently at the appropriate reporting time. In some instances, forecast can exceed budget due to timing but will ultimately be trued up once DOF approves the additional funding.
- In April-24, various Transfer of Budget Allotments (TBA's) were completed to accommodate position reclasses and/or operating expenditures. These budget shifts result in a net-zero impact to the overall Administrative Budget.

Data through April 30, 2024

Percentage of Fiscal Year Completed: 83.3%

**FY2023-24 Administrative Budget Expenditures Summary  
 by Line Item Detail**

Description	Notes	FY2023-24 Total Budget	Monthly Expenditures (Apr)	YTD Expenditures (Jul - Apr)	Total Remaining Budget	FY2023-24 Forecast (May - Jun)	YTD Expenditures & Forecast
Salaries and Wages	1, 2	\$53,353,181	\$3,690,666	\$36,874,942	\$16,478,239	\$8,390,825	\$45,265,766
Benefits	1, 2	\$26,040,818	\$1,980,241	\$18,961,216	\$7,079,602	\$4,100,581	\$23,061,797
<b>TOTAL PERSONAL SERVICES</b>	<b>1, 2</b>	<b>\$79,393,999</b>	<b>\$5,670,907</b>	<b>\$55,836,158</b>	<b>\$23,557,841</b>	<b>\$12,491,405</b>	<b>\$68,327,564</b>
General Expense		\$539,298	\$31,407	\$167,903	\$371,395	\$371,395	\$539,298
Board Costs		\$49,000	\$1,333	\$38,879	\$10,121	\$10,121	\$49,000
Printing		\$238,000	\$0	\$5,284	\$232,716	\$232,716	\$238,000
Communications		\$651,000	\$33,725	\$382,035	\$268,965	\$268,965	\$651,000
Postage		\$20,000	\$2,101	\$11,043	\$8,957	\$8,957	\$20,000
Travel, In-State	2	\$702,697	\$36,078	\$384,208	\$318,489	\$318,489	\$702,697
Travel, Out-Of-State		\$91,466	\$730	\$23,775	\$67,691	\$67,691	\$91,466
Training	2	\$458,167	\$9,328	\$148,897	\$309,270	\$309,270	\$458,167
Rent - Building and Grounds		\$2,696,722	\$438,701	\$2,562,917	\$133,805	\$133,805	\$2,696,722
Consulting and Professional Services: Interdepartmental		\$3,452,715	\$123,056	\$539,747	\$2,912,968	\$2,912,968	\$3,452,715
Consulting and Professional Services: External	2	\$5,062,936	\$167,323	\$1,460,619	\$3,602,317	\$3,602,317	\$5,062,936
Consolidated Data Centers		\$1,963,000	\$0	\$673,774	\$1,289,226	\$1,289,226	\$1,963,000
Information Technology		\$2,721,000	\$525,878	\$2,334,317	\$386,683	\$386,683	\$2,721,000
<b>TOTAL OPERATING EXP AND EQUIP</b>		<b>\$18,646,001</b>	<b>\$1,369,660</b>	<b>\$8,733,398</b>	<b>\$9,912,603</b>	<b>\$9,912,603</b>	<b>\$18,646,001</b>
<b>TOTALS</b>	<b>1, 2</b>	<b>\$98,040,000</b>	<b>\$7,040,568</b>	<b>\$64,569,556</b>	<b>\$33,470,444</b>	<b>\$22,404,009</b>	<b>\$86,973,565</b>

Category	Percentage
Percentage of Personal Services Budget Expended	70.3%
Percentage of Operating Expenses & Equipment Budget Expended	46.8%
<b>Percentage of Total Budget Expended</b>	<b>65.9%</b>
Percentage of Fiscal Year Completed	83.3%

#

**Footnotes**

- 1 Statewide employee bargaining contracts are negotiated with the Administration on a periodic basis. Changes to these agreements impact the Authority's budget and updates to the budget are reflected subsequently at the appropriate reporting time. In some instances, forecast can exceed budget due to timing but will ultimately be trued up once DOF approves the additional funding.
- 2 In April-24, various Transfer of Budget Allotments (TBA's) were completed to accommodate position reclasses and/or operating expenditures. These budget shifts result in a net-zero impact to the overall Administrative Budget.

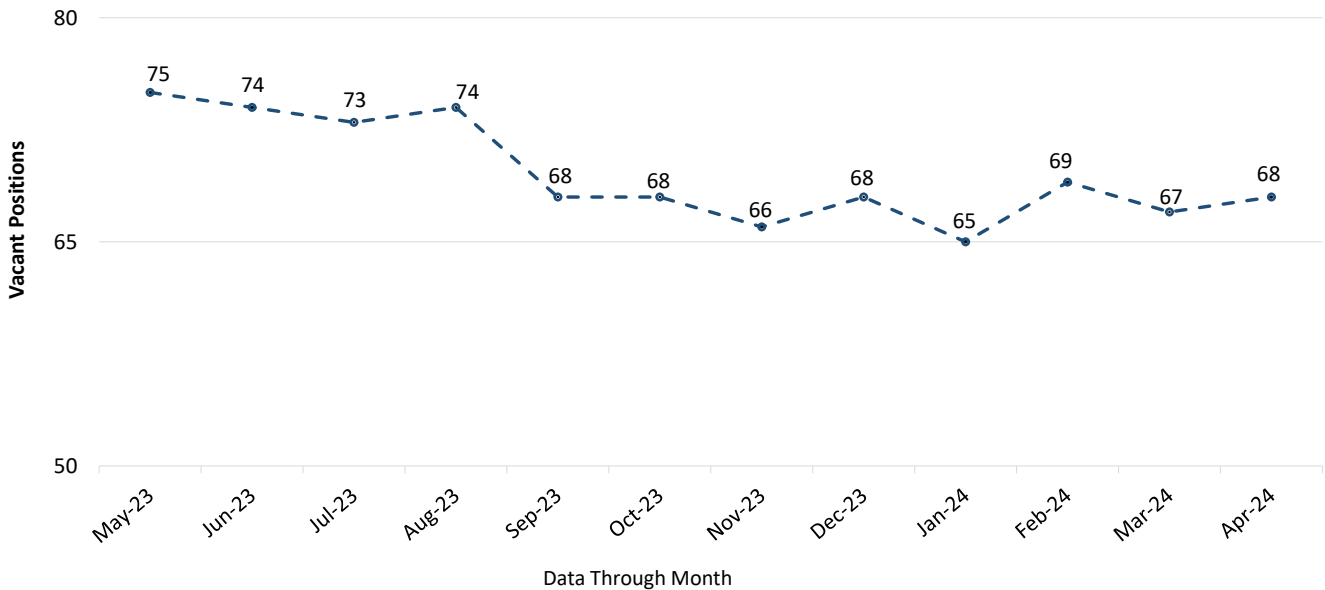
Data through April 30, 2024

Percentage of Fiscal Year Completed: 83.3%

**FY2023-24 Position Summary  
 All Offices**

All Offices	Notes	Total Authorized Positions	Total Filled Positions	Prior Month Vacant Positions	Prior Month Vacancy Rate	Total Vacant Positions	Total Vacancy Rate
Executive Office		9	8	1	11.1%	1	11.1%
Risk Management Office		6	5	1	16.7%	1	16.7%
Administration Office		52	46	7	13.5%	6	11.5%
Strategic Communications Office		14	13	1	7.1%	1	7.1%
Financial Office		59	54	4	6.8%	5	8.5%
Legal Office		13	12	2	15.4%	1	7.7%
Program Delivery Office		169	130	37	21.9%	39	23.1%
Northern California Region Office		8	8	0	0.0%	0	0.0%
Central Valley Region Office		8	7	1	12.5%	1	12.5%
Southern California Region Office		6	6	0	0.0%	0	0.0%
Audit Office		13	12	1	7.7%	1	7.7%
Legislative Affairs Office		3	3	0	0.0%	0	0.0%
Information Technology Office		69	57	12	17.4%	12	17.4%
<b>Total</b>	<b>3</b>	<b>429</b>	<b>361</b>	<b>67</b>	<b>15.6%</b>	<b>68</b>	<b>15.9%</b>

**Vacancies Trend**



#  
 3 This report reflects State employees only.

**Footnotes**

Data through April 30, 2024

FY2023-24 Vacancy Report  
 All Offices

Percentage of Fiscal Year Completed: 83.3%

Office	Notes	Total Vacant Positions
<b>Executive Office</b>		
Staff Services Manager I		1
<b>Executive Office Total</b>		<b>1</b>
<b>Risk Management Office</b>		
Supervising Transportation Engineer		1
<b>Risk Management Office Total</b>		<b>1</b>
<b>Administration Office</b>		
Staff Services Manager I		2
Associate Governmental Program Analyst		2
Senior Personnel Specialist		1
Office Technician (Typing)		1
<b>Administration Office Total</b>		<b>6</b>
<b>Strategic Communications Office</b>		
Information Officer I (Specialist)		1
<b>Strategic Communications Office Total</b>		<b>1</b>
<b>Financial Office</b>		
Deputy Director of Business Analytics and Strategic Planning		1
Associate Governmental Program Analyst		1
Associate Accounting Analyst		2
Staff Services Analyst		1
<b>Financial Office Total</b>		<b>5</b>
<b>Legal Office</b>		
Staff Services Analyst		1
<b>Legal Office Total</b>		<b>1</b>
<b>Program Delivery Office</b>		
Director of Engineering		1
Director of Contracts Administration (C.E.A.)		1
Director of Program Safety and Security (C.E.A.) B		1
Deputy Director of Real Property (C.E.A.)		1
Deputy Director (C.E.A.) A		1
Deputy Director of Architecture (C.E.A.) B		1
Principal Transportation Engineer		4
Supervising Transportation Engineer		6
Senior Transportation Electrical Engineer		1
Senior Transportation Engineer		11
Transportation Engineer (Civil)		1
Senior Environmental Scientist (Supervisory)		1
Principal Right of Way Agent		1
Supervising Right of Way Agent		1
Associate Right of Way Agent		1
Supervising Environmental Planner		1
Staff Services Manager III		1
Staff Services Manager I		1
Structural Design Technician II		1
Associate Governmental Program Analyst		2
<b>Program Delivery Office Total</b>		<b>39</b>
<b>Central Valley Region Office</b>		
Associate Governmental Program Analyst		1
<b>Central Valley Region Office Total</b>		<b>1</b>
<b>Audit Office</b>		
Associate Management Auditor		1
<b>Audit Office Total</b>		<b>1</b>
<b>Information Technology Office</b>		
Information Technology Manager II		1
Information Technology Supervisor II		2
Information Technology Specialist II		1
Information Technology Specialist I		3
Information Technology Associate		4
Graphic Designer II		1
<b>Information Technology Office Total</b>		<b>12</b>
<b>Total Vacancies</b>	<b>3</b>	<b>68</b>

#

3 This report reflects State employees only.

Footnotes