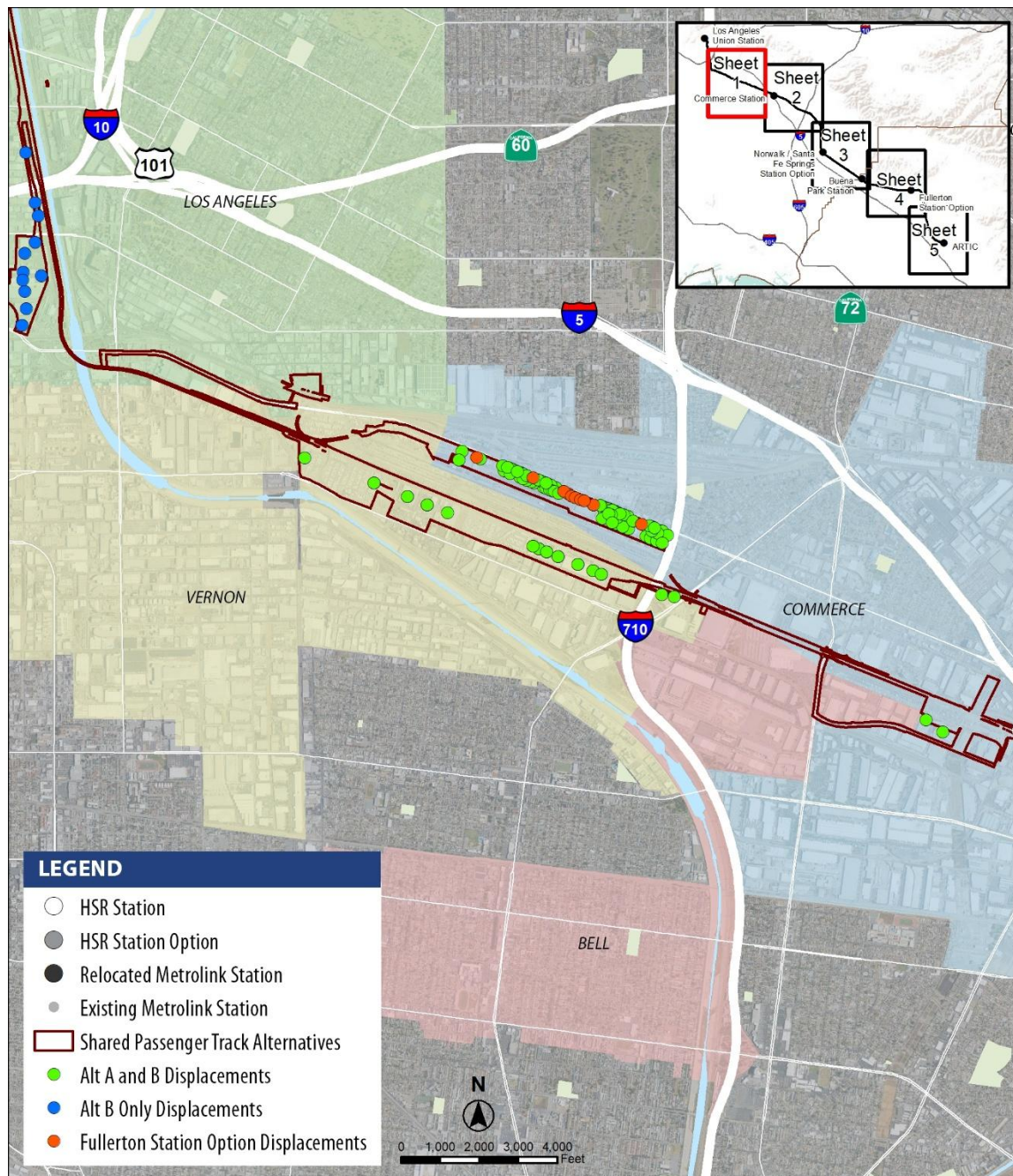


## APPENDIX 3.12-E: BUSINESS DISPLACEMENT MAPS



Sources: Authority 2025; Los Angeles County Assessor 2023; Orange County Assessor 2023

**Figure 3.12-E-1 Business Displacements, Sheet 1 of 5**



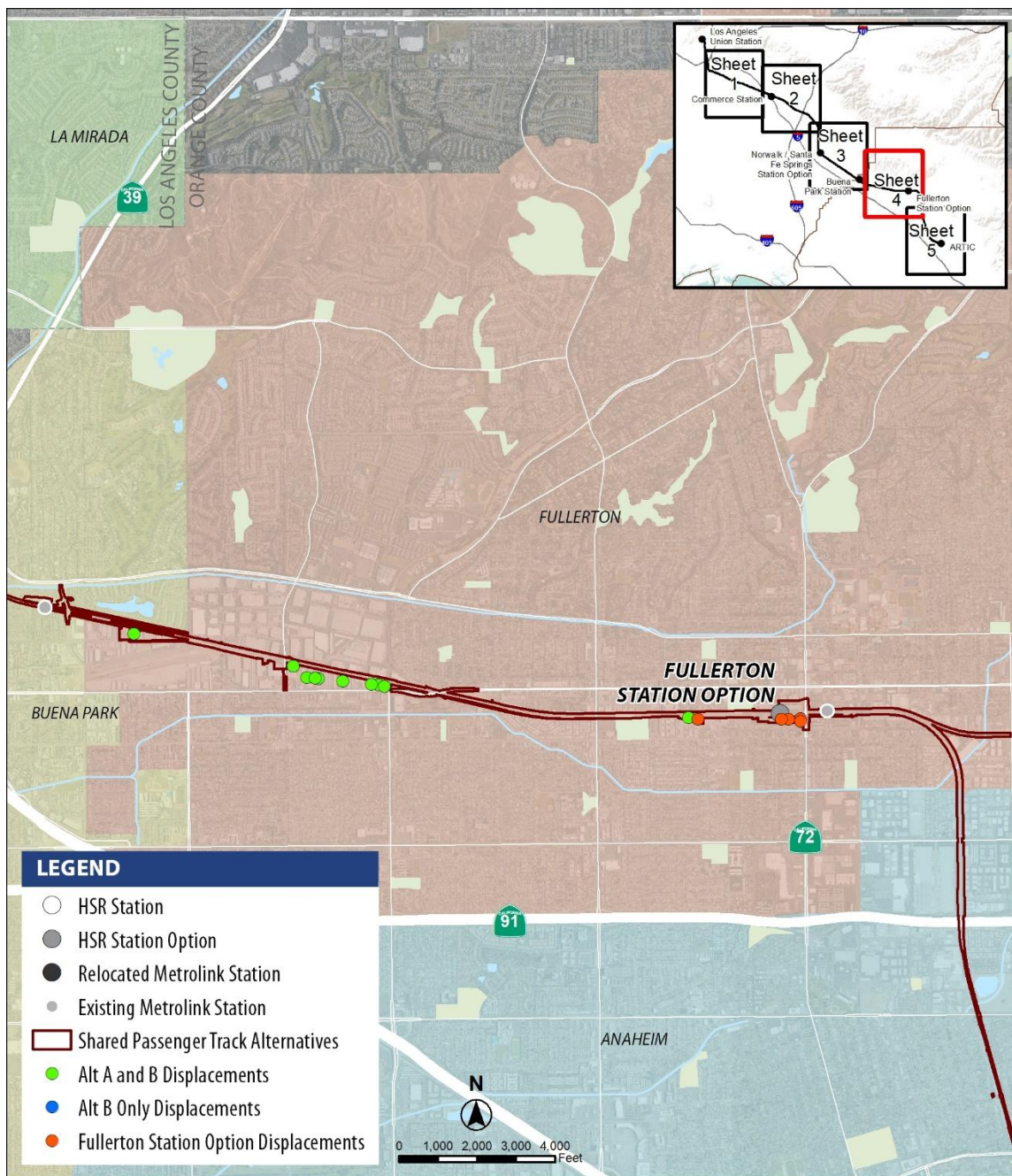
Sources: Authority 2025; Los Angeles County Assessor 2023; Orange County Assessor 2023

**Figure 3.12-E-1 Business Displacements, Sheet 2 of 5**



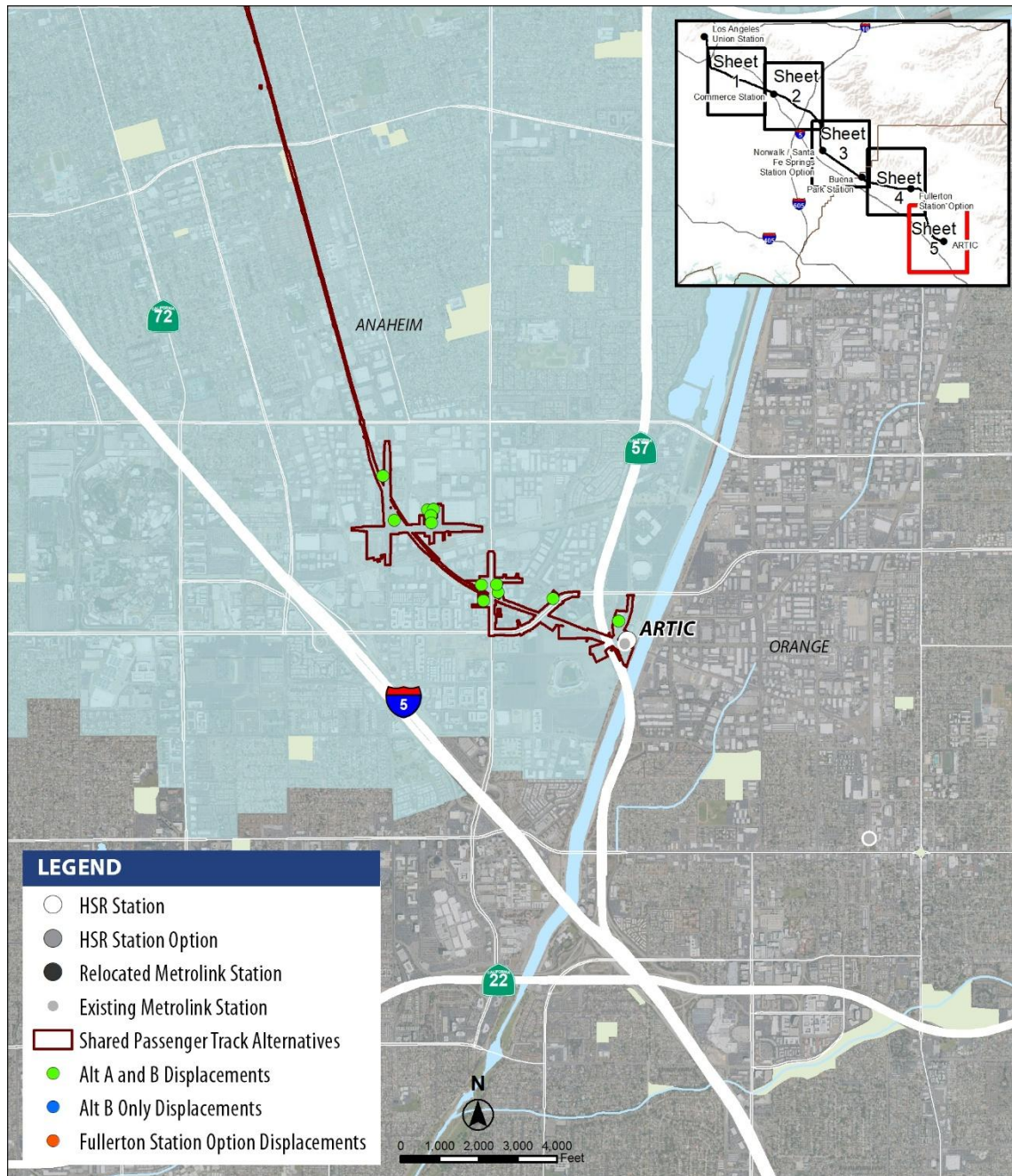
Sources: Authority 2025; Los Angeles County Assessor 2023; Orange County Assessor 2023

**Figure 3.12-E-1 Business Displacements, Sheet 3 of 5**



Sources: Authority 2025; Los Angeles County Assessor 2023; Orange County Assessor 2023

**Figure 3.12-E-1 Business Displacements, Sheet 4 of 5**



Sources: Authority 2025; Los Angeles County Assessor 2023; Orange County Assessor 2023

**Figure 3.12-E-1 Business Displacements, Sheet 5 of 5**

## References

California High-Speed Rail Authority (Authority). 2025. *Los Angeles to Anaheim Project Section Draft Relocation Impact Report*.

Los Angeles County Assessor. 2023. Parcel GIS Data. January.

Orange County Assessor. 2023. Parcel GIS Data. January.