

9 PUBLIC AND AGENCY INVOLVEMENT

Pursuant to the requirements of the National Environmental Policy Act (NEPA) and California Environmental Quality Act (CEQA), the California High-Speed Rail Authority (Authority) and Federal Railroad Administration (FRA) have implemented, and the Authority is currently implementing a public and agency involvement program as part of the environmental review process. Pursuant to U.S. Code (U.S.C.) Title 23 Section 327, under the NEPA Assignment Memorandum of Understanding (MOU) between FRA and the State of California, effective July 23, 2019, the Authority is the federal lead agency for environmental reviews and approvals for all Authority Phase 1 and Phase 2 California HSR System projects. In this role, the Authority is the project sponsor and the lead federal agency for compliance with NEPA and other federal laws for the California HSR System, including the Bakersfield to Palmdale Project Section.

Public and agency involvement efforts initiated the alternatives analysis, including development of the alternatives evaluated in this document. This chapter describes the continuing public and agency involvement program for this Bakersfield to Palmdale Project Section (B-P) Draft Environmental Impact Report/Environmental Impact Statement (EIR/EIS).

The public and agency involvement program includes the following efforts:

- Preparing and distributing informational materials, such as fact sheets
- Conducting informational meetings, public and agency scoping meetings, meetings with individuals and groups, and presentations to stakeholders
- Conducting workshops and open house meetings about the Bakersfield to Palmdale Project Section
- Giving briefings to interested and/or affected stakeholders
- Conducting agency scoping meetings, interagency working group meetings with agency representatives, and other agency consultation
- Notifying the public and circulating this Draft EIR/EIS

The Authority posts meeting notices and public documents on its website, www.hsr.ca.gov. The site includes information about the California High-Speed Rail (HSR) System and the Bakersfield to Palmdale Project Section. It also houses the Authority's biennial business plans, newsletters, press releases, meetings, recent developments, status of the environmental review process, Authority contact information, and related links. Authority meetings are open to the public, and one of the first items on each meeting agenda offers an opportunity for public comment, questions, or discussion.

California High-Speed Rail Authority Website

Information on HSR project activities, including meeting notices and publications, are available online: www.hsr.ca.gov

The Authority posted this Draft EIR/EIS and technical appendices on its website. For information on how to access and review technical reports, please refer to the Authority's website at www.hsr.ca.gov. Materials (in English and Spanish) on how to participate during the public comment period and navigate the document are also available on the Authority's website.

While the Draft EIR/EIS was being prepared, questions were received from a variety of means, including the meetings and workshops listed above. Frequently asked questions concerned impacts on property, agricultural lands and operations, traffic circulation and access on local roads, noise and vibration, and the process by which the final alignment would be selected. Other concerns had to do with impacts of other alternatives not pursued and the status of changes that individuals and organizations had suggested. When possible, project staff answered these and other questions, but often the response was to refer them to the environmental analysis forthcoming in the Draft EIR/EIS. This included mention of opportunities for public comment on that document.

Because CEQA requires the environmental review process to consider public comments, these comments inform the preparation of this Draft EIR/EIS. This includes suggestions from individuals and organizations about the alternatives. When received, questions that could not be answered at public meetings were logged and HSR staff followed up with individuals and organizations; otherwise, items were noted for discussion at future public meetings as more specific information became available. Table 9-1, presented at the end of this chapter, provides a comprehensive list of all meetings held as part of the Authority's public outreach effort for the Bakersfield to Palmdale Project Section.

9.1 Fresno to Bakersfield Locally Generated Alternative from the Intersection of 34th Street and L Street to Oswell Street Public and Agency Involvement

This section describes the public and agency involvement program conducted as a part of the Fresno to Bakersfield Locally Generated Alternative (F-B LGA) environmental review process, particularly for the public and agencies potentially impacted by implementation of the project from the intersection of 34th Street and L Street to Oswell Street. Details about project development and public and agency involvement can be found in Chapter 9 of the *Fresno to Bakersfield Section Draft Supplemental EIR/EIS* (Authority and FRA 2017).

9.1.1 Environmental Justice Outreach

The Authority conducted specific outreach efforts to low-income and minority populations and to communities of concern for the F-B LGA between the intersection of 34th Street and L Street and Oswell Street. Identification of potentially impacted populations is described in Chapter 5 and Section 9.1 of the *Fresno to Bakersfield Section Draft Supplemental EIR/EIS* (Authority and FRA 2017). Informational open houses were held in Bakersfield on August 25, 2015, and November 5, 2015.

9.1.2 Public Agency Scoping

Public and agency scoping conducted for the F-B LGA from the intersection of 34th Street and L Street to Oswell Street involved stakeholder and agency coordination as listed in Table 9-1 of the *Fresno to Bakersfield Section Draft Supplemental EIR/EIS* (Authority and FRA 2017), and took place between the March 5, 2015, kick-off meeting with the Kern Council of Governments and the December 19, 2018, public hearing in Bakersfield. Activities included meetings with school districts and the City of Bakersfield; activity centers held at cultural facilities like Mercado Latino Tianguis, the Los Amigos Swapmeet, and the Bakersfield Art Walk; and meetings with local stakeholders like the owner of Mercado Latino Tianguis, the Golden Empire Gleaners, and the Bakersfield Homeless Center. Section 9.3 of the *Fresno to Bakersfield Section Draft Supplemental EIR/EIS* includes a description of the types of meetings and activities undertaken by the Authority.

9.1.3 Notification and Circulation of the Draft Supplemental EIR/EIS

Notice regarding the availability and circulation of the *Fresno to Bakersfield Section Draft Supplemental EIR/EIS* (Authority and FRA 2017) was provided pursuant to CEQA and NEPA requirements. The notice was provided in both English and Spanish. Furthermore, public transit agencies with facilities within one-half mile of the project received the notice of availability of the Draft EIR/EIS and/or a copy of the Draft EIR/EIS. The Authority published an announcement in newspapers with general circulation in areas potentially affected by the portion of the F-B LGA between the intersection of 34th Street and L Street and Oswell Street.

9.2 Environmental Justice Outreach

Environmental justice as a NEPA topic is rooted in Title VI of the Civil Rights Act of 1964, which prohibits discrimination on the basis of race, color, and national origin, including the denial of meaningful access for limited English proficiency persons, in programs and activities receiving federal financial assistance. Following the direction of U.S. Executive Order 12898, federal

agencies developed guidelines to foster equitable outcomes for low-income and minority populations (for more information, refer to Chapter 5, Environmental Justice).

The Environmental Justice Outreach Plan (Appendix 5-B) prepared for the Bakersfield to Palmdale Project Section guides the Authority in engaging minority and low-income populations to communicate project information, listen to and respond to community thoughts and concerns, and provide opportunities for meaningful participation. Outreach and engagement activities with environmental justice populations were initiated in 2009, when public involvement activities began concerning the design and environmental review process for the Bakersfield to Palmdale Project Section alternatives. These activities also have continued throughout the design and environmental review process to ensure environmental justice communities have a voice in identifying and evaluating the alternatives. The outreach included facilitating meaningful participation and input, documenting the concerns of the participants, and retaining all comments as part of the public record. In this way, the analyses and conclusions accurately reflect the setting and potential impacts of the Bakersfield to Palmdale Project Section alternatives in environmental justice communities.

Environmental justice populations were identified using 2009–2013 American Community Survey data from the U.S. Census Bureau (Chapter 5, Environmental Justice). The *Bakersfield to Palmdale Project Section: Community Impact Assessment Technical Report* (Authority 2018a) contains a list of environmental justice-related interest groups engaged during the outreach efforts. The Authority engaged organizations and groups with interest in environmental and social justice issues, such as the California Rural Legal Assistance and Central California Environmental Justice Network, minority organizations such as the Mexican American Political Association, and civic and group leaders from the region. Specific outreach efforts for environmental justice-related interest groups included one-on-one briefings, presentations to large groups, booths at local conferences and community festivals, and public meeting notices posted at key locations in targeted areas throughout the Bakersfield to Palmdale Project Section corridor. The Authority distributed mailings and emails for public meetings. Materials for public meetings hosted by the Authority were provided in English and Spanish, and Spanish-language interpreters were available at all public meetings.

For additional information about environmental justice outreach to low-income and minority populations, see Section 5.6, Environmental Justice Engagement, in Chapter 5. Appendix 5-B, Table 5-B-4, provides a detailed inventory of key environmental stakeholder outreach meetings and events held between March 2012 and March 2019. Table 9-1 lists all public involvement activities, including outreach to minority and low-income populations.

9.3 Public and Agency Scoping

Both NEPA (Code of Federal Regulations [C.F.R.] Title 43, Part 46.235) and CEQA (Title 14, Chapter 3, Section 21083.9) require scoping for an EIS on projects of statewide significance. Public and agency scoping is an important element in the process of determining the focus and content of an EIR/EIS; it provides an opportunity for public involvement and helps identify the range of actions, alternatives, environmental effects, and mitigation measures to be analyzed. Public and agency scoping helps focus detailed study on those issues pertinent to final approval of the proposed Bakersfield to Palmdale Project Section and certification of the Final EIR/EIS. The Authority conducted scoping for the Bakersfield to Palmdale Project Section Draft EIR/EIS from August 24 to November 2, 2009.

9.3.1 Notices of Preparation, Notices of Intent, and Public Information Materials

On August 24, 2009, the Authority issued a Notice of Preparation (#2009082062) for the Bakersfield to Palmdale Project Section EIR/EIS. The Notice of Preparation was distributed to the State Clearinghouse; elected officials; local, regional, and state agencies; and members of the public who had expressed interest in receiving it. A Notice of Intent was published in the *Federal Register* on September 4, 2009, stating publicly FRA's intention to prepare an EIR/EIS for the Bakersfield to Palmdale Project Section of the California HSR System. Information from the

scoping meetings includes the Bakersfield to Palmdale Project Section HSR Fact Sheet (in English and Spanish), scoping meeting notification postcards (in English and Spanish), public meeting presentations, and the Agency Coordination Plan. For information on how to access and review scoping meeting materials, please refer to the Authority's website at www.hsr.ca.gov. Approximately 1,600 members of the public received direct mail announcements of the public scoping meetings. The direct mail recipients included members of the public identified as stakeholders, affected property owners, and those who had attended project meetings previously. Local newspapers published advertisements of the meetings and local media outlets received press releases.

9.3.2 Scoping Meetings

The scoping period for the environmental process occurred from August 24 to November 2, 2009, with three public scoping meetings held in September. The specific places and dates of the scoping meetings are listed below.

- **Bakersfield**—Red Lion Hotel, September 15, 2009
- **Tehachapi**—Stallion Springs Community Center, September 16, 2009
- **Palmdale**—Chimbole Cultural Center, September 17, 2009

The *Bakersfield to Palmdale Project Section Scoping Report* (Authority 2009) summarizes the scoping process and the comments received during the scoping period. For information on how to access and review the Scoping Report, please refer to the Authority's website at www.hsr.ca.gov.

Email notifications were sent alerting stakeholders of the opening of the public comment period, and a press release was issued to encourage participation and public comments at the public hearings. All scoping meetings were held from 3:00 p.m. to 7:00 p.m. to allow agency representatives and the public sufficient time to participate. The open house format of the scoping meetings allowed people to arrive at any time during the meeting, obtain project information, and submit comments. Information was displayed on large poster boards, in PowerPoint slideshows, and on handouts.

Scoping comment cards were provided to attendees at each of the meetings as a way for them to comment on the information and to express their concerns, ideas, and questions. Written comments and questions were collected and transferred to flip charts and large maps at the meetings. Verbal comments were recorded by a court reporter. Comments could also be submitted by mail or through the Authority's website. All of the comments received at the scoping meetings were documented and are summarized in the subsections that follow. They are provided in detail in the *Bakersfield to Palmdale Project Section Scoping Report* (Authority 2009). For information on how to access and review the Scoping Report, please refer to the Authority's website at www.hsr.ca.gov.

Beyond the scoping meetings, public input was sought on the scope of the environmental review through smaller group presentations and briefings. Comment cards were distributed at these meetings with the option that they could be completed at the meeting or mailed at a later date. Table 9-1 at the end of this chapter lists all of the meetings held for the Bakersfield to Palmdale Project Section outreach effort.

9.3.3 Scoping Comments

By the end of the scoping process, the Authority and FRA received 50 written public comments from individuals and organizations (comment cards, letters, emails, and transcriptions), 15 comments from agencies, and 2 comments from private businesses on the proposed project. Comments received at scoping meetings held in Bakersfield, Tehachapi, and Palmdale generally related to two major topic areas: project alternatives and environmental concerns. The issues and comments are summarized in the *Bakersfield to Palmdale Project Section Scoping Report* (Authority 2009). The scoping meeting comments and those received in response to the Notice of Intent/Notice of Preparation helped the lead agencies identify general environmental issues to address in the Bakersfield to Palmdale Project Section Draft EIR/EIS. These included issues with

the proposed alternatives, suggestions for new or modified alternatives and stations, and issues of potential concern related to the proposed project (listed below). Major issues identified during scoping included the following:

- Air quality impacts in Tehachapi
- Cost and financing of the HSR system
- Desert habitat impacts/maintenance of wildlife corridors
- Disruption of the existing transportation system
- Earthquake faults/plan for safety
- Economic growth impacts
- Floodplain avoidance
- Location and adequacy of parking at stations
- National Forest impacts
- Noise levels at full speed on the HSR system and in residential areas
- Protection of agricultural lands
- Protection of Native American lands
- Recreation impacts
- Soil contamination (mercury) in the Tehachapi Mountains
- Station and alignment locations
- System safety

9.4 Alternatives Analysis Process

The alternatives analysis process used conceptual planning, environmental data, and engineering information to identify feasible and practicable alternatives to evaluate in the EIR/EIS. Public and agency input provided valuable information that assisted in the evaluation of project alternatives. Chapter 2, Alternatives, describes the process of evaluating and selecting the Bakersfield to Palmdale Project Section alternatives.

The sections below summarize the results of the collaborative public and agency outreach process and how that input contributed to identification and consideration of alternatives for the Bakersfield to Palmdale Project Section. Figure 9-1 illustrates stakeholder involvement during the scoping and identification of project-level alternatives, the collaborative approach to public outreach as the alternatives were refined, and the solicitation of public comments during public circulation of the EIR/EIS.

9.4.1 Scoping and Identifying Potential Alternative Alignments

Initially, the Authority and FRA selected a preferred corridor for the Bakersfield to Palmdale Project Section in the statewide *Program EIR/EIS* (Authority and FRA 2005) and the *Bay Area to Central Valley Program EIR/EIS* (Authority and FRA 2008). Based on analysis provided in the Statewide Program EIR/EIS, the Authority and FRA chose to advance the State Route 58/ Soledad Canyon Corridor (Antelope Valley) to the Tier 2 (project-level) study (Authority and FRA 2005).

The project-level studies for the Bakersfield to Palmdale Project Section were initiated in 2007, before scoping for the project section began. After the public scoping process was completed in 2009, preliminary alternatives were developed to consider the alignments and station development in Bakersfield and Palmdale. The alternatives analysis process looked at the design options for each alternative to isolate specific concerns. This effort helped screen and refine the alternatives to avoid key environmental issues and improve operation performance of the HSR trains.

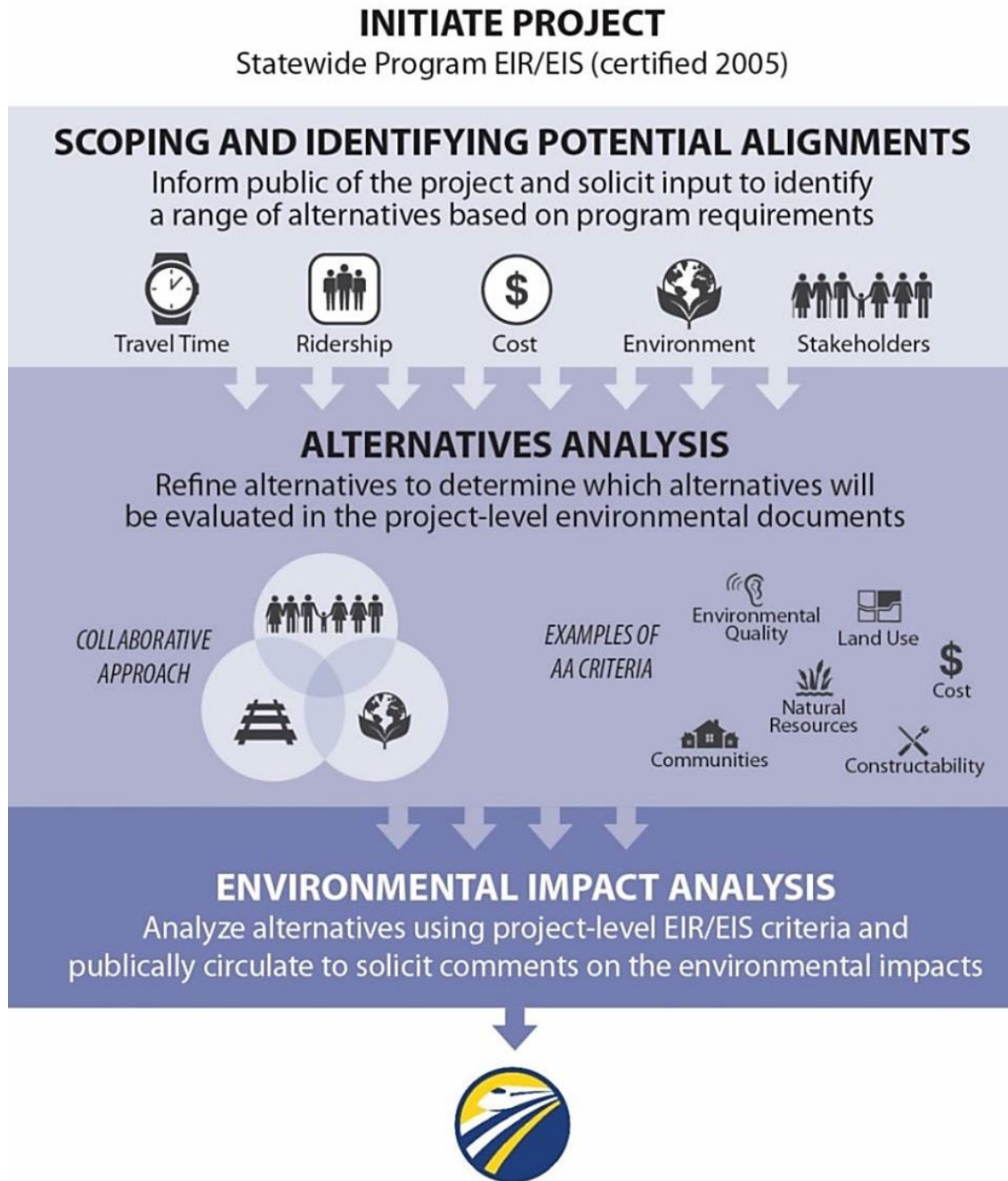


Figure 9-1 Public Outreach during the Environmental and Alternatives Analysis Processes

While the alternatives process considered multiple evaluation criteria, the project-wide objective was to maximize the use of existing transportation corridors and available rights-of-way, where feasible, as this could minimize the impacts caused by the new linear transportation corridor. The engineering, geologic, and grade requirements of this project section substantially influenced the development of alternative alignments as well. The alternatives not carried forward had greater direct and indirect environmental impacts, were impracticable, or failed to meet the project purpose. Section 2.3.12, Range of Potential Alternatives Considered and Findings, further describes the evaluation of early alternatives.

9.4.2 Public Outreach during Refinement of Alternatives

Following scoping, the Authority and FRA engaged in a formal alternatives analysis process to provide information and documentation on how evaluation measures and criteria had been applied to each of the preliminary alternatives. The alternatives were evaluated using a collaborative approach to optimize project objectives, minimize potential environmental impacts, and incorporate community input.

The history of the process and its reporting is as follows:

- In 2010, the Authority issued the *Bakersfield to Palmdale Preliminary Alternatives Analysis Report, Volume 1* (Authority and FRA 2010). This document introduced a range of project alternatives based on the HSR corridor selected in 2005 and the programmatic EIR/EIS for the statewide system (Authority and FRA 2005). Public and agency comments received during preliminary feasibility studies, the scoping period, and ongoing interagency coordination and public information meetings helped identify which of the initial alternatives were carried forward for further analysis.
- In 2012, the Authority released the *Bakersfield to Palmdale Project Section: Supplemental Alternatives Analysis (SAA) Report, Volume 2* (Authority and FRA 2012). This report presented a refined range of alternatives for the corridor based on new information obtained since the publication of the 2010 alternatives analysis. The 2012 SAA responded specifically to the Authority's concerns about reducing environmental impacts and overall project costs. The alternatives were modified based on potential land use conflicts, wetland issues, and other possible environmental impacts; they were also changed based on project purpose/objectives and requirements, and stakeholder input. The higher costs associated with elevated profiles and tunneling were reduced by increasing track grade; lowering alignment profiles and bringing them close to grade; and reducing tunnel lengths where possible. The proposed alignments in the 2012 SAA avoided permanent direct impacts on the Nuestra Señora Reina de La Paz/César E. Chávez National Monument (La Paz) through design modifications that included moving the associated access road to avoid La Paz.
- In 2014, new subsection alternatives were studied in the Edison, Tehachapi, and Antelope Valley areas because new geotechnical data and further input from stakeholders along the alignment were received. In 2015, refinements to the alternatives were developed to address the potential impacts on wind energy facilities in the Tehachapi and Rosamond areas. Additional geotechnical research on the Tehachapi Creek Fault Corridor more clearly defined the likely fault zone locations along the alignment. Studies were performed to determine the optimal track grade for ascending and descending the Tehachapi Mountains. New input from cities and stakeholders along the route was incorporated. This evaluation process is documented in the Alternatives Screening Memorandum (Authority 2016a), which resulted in the identification of eight end-to-end alignment alternatives for the project section.
- In 2016, the Authority issued the 2016 Bakersfield to Palmdale Project Section SAA Report (Authority 2016b), which evaluated and recommended further refinements to four of the alternatives studied in the 2010 Preliminary Alternatives Analysis and the 2012 SAA. The 2016 SAA sought to further avoid and minimize potential impacts on existing facilities, land uses, and environmental resources. While the previous SAA evaluated three subsections, the 2016 SAA added a new subsection for the Keene area to allow for a more detailed analysis of effects on that community.

The 2016 SAA concluded that Alternatives 1, 2, 3, and 5 would be more constructible as they would have fewer tunnel miles and lower capital costs. It also determined these four alternatives would have lower potential impacts on rights-of-way and displacements, potential Section 4(f) resources, cultural resources, and community resources compared to Alternatives 4, 6, 7, and 8. It was recommended, therefore, that Alternatives 4, 6, 7, and 8 be withdrawn. Table 2-4 of Chapter 2, Alternatives, offers an inclusive list of the recommended alternatives identified through the SAA process.

- In 2017 and 2018, consultation under Section 106 of the National Historic Preservation Act of 1966 (NHPA) took place with the consulting parties for the National Chavez Center and studied alignment options near La Paz to avoid and minimize adverse noise and visual effects on this National Historic Landmark.¹ In 2018, the Authority issued the *Avoidance and Minimization Options Screening Memorandum for the César E. Chávez/Nuestra Señora Reina de la Paz National Historic Landmark* (Authority 2018b), which evaluates five options developed to avoid or minimize impacts on La Paz. The analysis resulted in the development of the César E. Chávez National Monument Design Option (CCNM Design Option), a design alternative that can be applied to any of the B-P Build Alternatives.
- In response to concerns expressed by consulting parties between June 2017 and February 2019, the Authority developed additional design options that further avoid or minimize adverse effects to the National Historic Landmark. In 2019, the Authority issued the *Design Options Screening Report for the César E. Chávez/Nuestra Señora Reina de la Paz National Historic Landmark* (Authority 2019a) and the *Addendum to the Design Options Screening Report for the César E. Chávez/Nuestra Señora Reina de la Paz National Historic Landmark* (Authority 2019b), which evaluate 10 potential design options developed to avoid or minimize impacts on La Paz. This process resulted in the Refined CCNM Design Option, a second design alternative that can be applied to any of the B-P Build Alternatives.

Section 106 Consulting Parties

- Cesar Chavez Foundation*
- National Park Service*
- National Parks Conservation Association*
- California Office of Historic Preservation (State Historic Preservation Officer)
- Los Angeles County Department of Regional Planning
- San Manuel Band of Mission Indians
- Fernandeño Tataviam Band of Mission Indians
- Tejon Indian Tribe
- Kern Valley Indian Council
- Barbareño/Ventureño Band of Mission Indians
- Central Valley Yokuts Coalition
- Advisory Council on Historic Preservation (informal participation)

*Consulting specifically on impacts on Nuestra Señora Reina de La Paz/César E. Chávez National Monument

This collaborative approach will continue to inform the project planning process, including the identification of a final preferred alternative, the certification of the environmental document, and final project approval.

9.4.3 Public Information Meetings and Materials during the Alternatives Analysis Process

The Authority held public information meetings during the alternatives analysis process to gather, confirm, and understand key community concerns and to include them in the development of the B-P Build Alternatives and inform the environmental process for the Bakersfield to Palmdale Project Section. Information was presented in various meeting formats, such as stakeholder working groups (SWG), community open house meetings, and individual and group briefings, where participants had opportunities to express their input and offer alternatives analysis recommendations. The meetings included the following:

- Four SWGs held in September 2015
- Five community open house meetings held in September and October 2015
- More than 150 briefings with community stakeholders, businesses, local agencies, and elected officials

¹ Federal agencies are required to involve parties that have consultative roles in the Section 106 process, including (1) State Historic Preservation Officer, (2) Native American tribes and Native Hawaiian organizations, (3) representatives of local governments, (4) applicants for federal assistance, permits, licenses, and other approvals; and (5) additional consulting parties (36 C.F.R. Part 800, Subpart A, Section 800.2, Participants in the Section 106 Process).

The community open house meetings provided detailed information displays about the alternatives analysis process and updates to the alternatives. Key comments addressed the following topics:

- Aesthetics (including impacts on La Paz)
- Agricultural land
- Alignment proposals
- Business resources
- Connectivity
- Consistency with other plans
- Construction issues
- Cultural resources
- Earthquakes
- Engineering design
- Environmental justice
- Flood zones
- Funding
- Future development plans
- Geologic faults
- Grade crossings
- Groundwater
- Health
- Historical resources
- Job opportunities
- Land acquisition
- Mitigation
- Noise and vibration (including impacts on La Paz)
- Operational issues
- Property values
- Quality of life
- Rights-of-way
- Safety and security
- Schools
- Sensitive habitats and species
- Traffic
- Water resources
- Wildlife

Table 9-1, provided at the end of this chapter, lists the public outreach meetings associated with ongoing outreach efforts.

9.4.4 Stakeholder Working Group Meetings during the Alternatives Analysis Process

The Authority formed SWGs to engage regional participants on an ongoing basis in a forum for exchanging ideas and integrating local input into the environmental process. SWGs are informal, voluntary groups of stakeholders who represent a broad range of regional and local interests. The groups are composed of leaders from various constituencies close to the B-P Build Alternatives, including those involved in land use, transportation, environmental sustainability, and social issues in the region. Each group is designed to be small enough (approximately 35 members) for constructive collaboration to take place.

Participation in SWG meetings is by invitation through recommendation by regional HSR management or management of the jurisdictions, facilities, institutions, agencies, and organizations represented in the corridor. The SWG participant's role is to represent the interests of a jurisdiction, facility, service, agency, or organization and to serve as a liaison for these interests. The scope and influence of the SWG is locally oriented in relation to a limited part of the corridor. SWGs are not a formal voting body, but they enhance local input for the HSR planning process. Table 9-1, presented at the end of this chapter, lists the SWG meeting dates.

The Authority held meetings with four SWGs on the analysis process for the initial range of alternatives in September 2015. The Authority distributed meeting notices via mail and email, and provided meeting attendees with agendas, statewide HSR program fact sheets, and Bakersfield to Palmdale Project Section fact sheets. The Authority invited an average of 35 stakeholders to participate, with approximately 7 to 15 people in attendance at each of the four meetings. At each meeting, participants received an informational presentation and Authority staff addressed questions regarding the project and the process. The SWG forum provided input on the alternatives and information about city and county land use, transportation, and other planning projects. The meetings were also used to communicate updates to various boards or councils.

After the initial review of preliminary alternatives, the project team continued to meet with the SWGs to refine the potential alternatives and discuss more detailed information about transportation and land use development patterns that could be affected by the alternatives. SWG members offered site-specific information and insights about community resources, features, and

values. These insights resulted in adjustments in the position and profile of the alternatives to avoid and minimize impacts on community resources.

9.4.5 Environmental Resource Agency Meetings During the Alternatives Analysis Process

The Authority and the FRA consulted, and the Authority is consulting with environmental resource agencies, including the U.S. Environmental Protection Agency (USEPA), the U.S. Fish and Wildlife Service (USFWS), the U.S. Army Corps of Engineers (USACE), the California Department of Fish and Wildlife (CDFW), the State Water Resources Control Board (SWRCB), and other agencies with jurisdiction over the B-P Build Alternatives. Meetings were held with environmental resource agencies to review and approve the project's purpose and need, provide an overview and review of the alternatives analysis process, and receive comments on the alternatives. The primary feedback included information about the environmental permitting processes and site-specific knowledge the agency representatives possessed. Environmental concerns raised at these meetings included impacts on aquatic resources, threatened or endangered species, and potential historic resources.

The FRA consulted with the USACE regarding the results of the *Bakersfield to Palmdale Project Section Aquatic Resources Delineation Report* (Authority 2016c). The USACE determined that although many features in these areas meet the federal technical criteria that define wetlands and other waters, the waterbodies identified in the *Aquatic Resources Delineation Report* were determined to be isolated. Thus, the USACE will not assert jurisdiction under Section 404 of the Clean Water Act (Section 9.5.7 provides further discussion of this decision).

The Authority engaged in extensive early consultation with the SWRCB, the agency responsible for issuing approvals for proposed discharges of dredged and fill material to waters of the state. The Authority facilitated monthly agency coordination meetings to seek consideration and issuance of a waste discharge permit for discharges of dredged and fill material to waters of the state. The participants included representatives from the SWRCB and other regulatory agencies, including the USACE, USEPA, USFWS, and CDFW. The meetings set the framework for regulatory agency technical reviews, analyses, and comments on administrative, draft, and final CEQA documents and supporting technical reports. In addition to monthly agency coordination meetings and CEQA document review, field tours provided opportunities to review project aquatic features, with specific focus on claypan delineation methodology.

Under the Authority's NHPA Section 106 *Programmatic Agreement among the FRA, the Advisory Council on Historic Preservation, the SHPO, and the Authority Regarding Compliance with Section 106 of the NHPA, as it Pertains to the California High-Speed Rail Project* (Section 106 PA) (Authority 2011a) (Stipulations II.A and VII.B, as discussed in Section 9.5.6), and pursuant to 36 C.F.R. Part 800.10(c), FRA sent correspondence on August 24, 2016, to the National Park Service (NPS), which manages the visitor center and memorial gardens around César Chávez's gravesite at La Paz. The letter notified NPS of consultation involving the National Historic Landmark and included a description of the undertaking and an invitation to consult with the FRA regarding the potential impacts on the historic property. NPS met with FRA and Authority staff on December 7, 2016, and according to a letter dated March 16, 2017, NPS accepted the invitation to be a consulting party for the undertaking. These meetings are summarized in Table 9-1 at the end of this chapter.

9.5 Outreach during Development of the Draft EIR/EIS

With the selection of the B-P Build Alternatives following publication of the 2016 SAA, the Authority began to prepare this Draft EIR/EIS and to identify the preferred alternative for the Bakersfield to Palmdale Project Section. The public and agency outreach associated with this Draft EIR/EIS continues to include public discussion of the preferred alternative. Throughout this process, the Authority continued to hold meetings to update and obtain feedback from the public and meet with federal, state, and local agencies. The following subsections provide details on these activities.

9.5.1 Public Information Materials and Meetings

Public meetings were held during preparation of this Draft EIR/EIS to offer information about the environmental analysis, alternatives refinements, recommendations for the preferred alternative, and the status of the Draft EIR/EIS. These meetings provided information on various HSR project components and served as forums to obtain feedback. The public information meetings included brief presentations and project information materials (on display and in fact sheets), and project staff were available to answer questions. Meetings were announced through direct mail to those who requested involvement in and notification of activities related to the project section. The Authority also published advertisements in local newspapers and posted materials on its website. Public information meetings were held in a community open house format or in a more formal meeting setting (i.e., Authority Board meeting or local transportation committee). Table 9-1 lists the public meeting dates and topics.

9.5.2 Stakeholder Working Group Meetings

The SWGs formed during the alternatives analysis process continued to meet regularly during preparation of this Draft EIR/EIS to facilitate information exchange about modifications to alignments selected for analysis. The SWG meetings helped identify concerns and preferences, and relay important project updates. Table 9-1 lists these meeting dates.

9.5.3 Agreements and Memoranda of Understanding

The Authority has several agreements and memoranda of understanding (MOU) in place for the HSR system that are applicable to the Bakersfield to Palmdale Project Section.

The Authority and the FRA prepared an MOU in 2010 with the USEPA and the USACE to integrate NEPA (12 U.S. Code [U.S.C.] § 4321 et seq.), Clean Water Act (33 U.S.C. § 1251 et seq.), and Rivers and Harbors Act Section 14 (33 U.S.C. § 408) processes for the HSR project. On June 29, 2017, however, the Authority and FRA submitted a Notice of Withdrawal from the MOU for the Bakersfield to Palmdale Project Section due to the lack of federal jurisdiction over the waters in that particular project section. Section 9.5.7 provides further discussion of the process and justification for this determination. No additional NEPA Section 404 coordination was completed. The USACE's decision to not assert jurisdiction under Section 404 of the Clean Water Act is summarized in Section 9.5.7, and the consultation efforts are discussed in Section 9.4.5).

The 2011 *Memorandum of Understanding (MOU) for Achieving an Environmentally Sustainable High-Speed Train System for California* establishes a framework under which the signatory agencies committed to working together to achieve an environmentally sustainable HSR system (Authority 2011b). Signatories include the Authority, FRA, the U.S. Department of Housing and Urban Development, the Federal Transit Administration, and the USEPA. This MOU defines common goals, identifies key areas for collaboration, and defines expectations and terms for signatory agencies.

Consistent with the MOU, the Authority recognizes the need to build the project using sustainable methods that accomplish the following:

- Promote sustainable housing and development patterns
- Integrate station access and amenities into the fabric of surrounding neighborhoods
- Stimulate multimodal connectivity and increase options for affordable, convenient access to goods, services, and employment
- Reduce passenger transportation emissions across California, thereby reducing associated environmental and health impacts
- Promote energy efficiency and renewable energy
- Encourage best practices for water efficiency and conservation
- Protect ecologically sensitive and agricultural lands

The Authority and the FRA also executed the NHPA Section 106 PA in June 2011 (Authority 2011a). The Section 106 PA provides an overall framework for conducting the Section 106 process for this project section and includes interested party and tribal consultations. Agency coordination activities associated with the Section 106 PA and MOU are summarized in Section 9.5.5.

In 2019, the NEPA Assignment MOU between FRA and the State of California, effective July 23, 2019, identified the Authority as the federal lead agency for environmental reviews and approvals for all Authority Phase 1 and Phase 2 California HSR System projects.

9.5.4 Tribal Coordination Meetings

As a federal agency, FRA has a statutory obligation to fulfill the requirements of Section 106 (36 C.F.R. Part 800), and pursuant to the Section 106 PA, FRA is responsible for conducting government-to-government consultation with federally recognized Native American tribes. This includes preparing a memorandum of agreement for each project section that adversely affects, or has the potential to adversely affect, historic properties and participating in the resolution of disputes. FRA delegated responsibility to the Authority for implementation of the following provisions of the agreement: consult with non-federally recognized Native American groups, other consulting parties, and the public; conduct Section 106 reviews; and coordinate with Native American groups and other interested parties to participate in each undertaking MOU. For a full list of responsibilities, refer to the Section 106 PA (Authority 2011a).²

As part of the cultural resources investigation efforts conducted under Section 106, FRA and the Authority consulted with federally recognized Native American tribes (including the Soboba Band of Luiseño Indians) and the Pechanga. Both the Soboba Band of Luiseño Indians and the Pechanga requested to be concurring parties under the agreement (Authority 2011a). Tribal input is sought early in the project planning process to obtain Native American tribal input on concerns for tribal heritage resources potentially affected by the project. In this way, such concerns were accounted for early in project planning. Outreach and consultation with tribal stakeholders occurred and will continue to occur at key milestones throughout the project delivery process.

Formal consultation between FRA and the federally designated tribes began in March 2015. The California Native American Heritage Commission was contacted on March 26, 2015, for a search of its Sacred Lands File and to obtain lists of Native American contacts. The California Native American Heritage Commission is responsible for maintaining a list of all federally recognized tribes and non-federally recognized tribes that are recognized by the State of California. The Authority relied on the list of tribal governments provided by the California Native American Heritage Commission to determine which tribes to contact for the project. Twelve tribes were invited to participate in the Bakersfield to Palmdale Project Section Tribal Information Meeting after being identified by the California Native American Heritage Commission as potentially having cultural resources concerns regarding the project. The contacts for all 12 identified tribes were sent letters about the proposed project alternatives. The letters also requested information about traditional cultural properties that could be affected by the project. All 12 tribes identified by the California Native American Heritage Commission's contact were invited:

- Fernandeano Tataviam Band of Mission Indians
- Kawaiisu Tribe of Tejon Reservation
- Kern Valley Indian Council
- Kitanemuk and Yowlumne Tejon Indians
- San Fernando Band of Mission Indians
- San Manuel Band of Mission Indians
- Santa Rosa Tachi Tribe
- Santa Ynez Band of Chumash Indians/Santa Ynez Tribal Elders Council

² Pursuant to the NEPA Assignment MOU between the FRA and the State of California executed on July 23, 2019, the Authority has assumed the FRA's responsibilities for complying with the requirements of Section 106. However, under the NEPA Assignment MOU, the FRA retains the responsibility to conduct formal government-to-government consultations.

- Soboba Band of Luiseño Indians
- Table Mountain Rancheria
- Tejon Indian Tribe
- Tule River Indian Tribe of California

Of the 12 tribes invited, eight representatives of the following six tribes attended the meetings:

- Kern Valley Indian Council
- Kitanemuk and Yowlumne Tejon Indians
- San Manuel Band of Mission Indians
- Table Mountain Rancheria
- Tejon Indian Tribe
- Tule River Indian Tribe of California

The presentation to the tribal participants at the first meeting included an overview of the Bakersfield to Palmdale Project Section, a summary and status of the cultural resources investigation, and an overview of how tribes could participate in the project as consulting parties under Section 106 of the NHPA. After the Tribal Information Meeting, the Authority followed up with a meeting summary to all participants and sent consulting-party invitations to each of the 12 tribes, inviting them to identify tribal monitors to represent their respective tribe for tribal monitoring opportunities on the project.

Ultimately, four tribes elected to participate as Section 106 consulting parties for the Bakersfield to Palmdale Project Section: the San Manuel Band of Mission Indians; the Tejon Indian Tribe; the Kern Valley Indian Council; and the Fernandeño Tataviam Band of Mission Indians. In addition, the Yokuts tribes in the Central Valley (the Table Mountain Rancheria, the Picayune Rancheria of Chukchansi Indians, the Santa Rosa Rancheria Tachi Yokut Tribe, and the Tule River Indian Tribe of California) have all expressed interest in consulting on the northern portion of the Bakersfield to Palmdale Project Section that occurs within Yokuts ancestral tribal territory.

As a part of early tribal outreach, a Tribal Coordination Meeting was held Thursday, November 5, 2015, at 11:00 a.m. at the Bakersfield Convention Center/Rabobank Arena. Six tribes attended this meeting: the San Manuel Band of Mission Indians, the Tejon Indian Tribe, the Tule River Tribe of California, the Table Mountain Rancheria, the Kern Valley Indian Council, and the Kitanemuk and Yowlumne Tejon Indians. The meeting facilitated tribal participation by describing the statewide HSR system and providing an overview of the Bakersfield to Palmdale Project Section, with information regarding the planned cultural resources investigations.

The Authority and the FRA engaged and the Authority is currently engaged in ongoing meetings with the tribal consulting parties. As consulting parties, the tribes are afforded a chance to review and contribute to cultural resources technical reports; participate in tribal monitoring opportunities (including monitoring required during pedestrian archaeological field surveys and ground-disturbing construction activities in culturally sensitive areas); and contribute to the development of treatment and mitigation for potential impacts on significant resources. Meetings with tribal representatives are included in Table 9-1. A more detailed discussion of the tribal outreach and consultation efforts, as well as the findings of the cultural resources investigation for this project section, is provided in Section 3.17, Cultural Resources, of this Draft EIR/EIS.

9.5.5 Agency Meetings and Consultation

The Authority and the FRA consulted and the Authority is currently consulting with cooperating or participating federal, state, and local agencies under NEPA, ad with trustee and responsible agencies under CEQA, regarding specific resource areas associated with these agencies. Three cooperating agencies are included in the NEPA review process for the Bakersfield to Palmdale

Project Section: USACE, Bureau of Land Management (BLM), and the Surface Transportation Board.³

A number of California agencies (state and regional) serve as CEQA responsible agencies for the Bakersfield to Palmdale Project Section. These include the CDFW, California Department of Transportation (Caltrans), California Public Utilities Commission, California State Lands Commission, Central Valley Water Quality Control Board, Lahontan Regional Water Quality Control Board, San Joaquin Valley Air Pollution Control District, Eastern Kern Air Pollution Control District, Antelope Valley Air Quality Management District, and SWRCB.

Agency coordination is discussed in Section 3.7, Biological and Aquatic Resources; Section 3.8, Hydrology and Water Quality; Section 3.14, Agricultural Farmland and Forest Land; and Section 3.17, Cultural Resources, of this Draft EIR/EIS.

Since January 2015, the Authority has organized the Southern California project section regulatory agency meetings to obtain agency input on technical reports. Agencies invited to these meetings include the BLM, the USEPA, USACE, the Surface Transportation Board, the NPS, the National Oceanic and Atmospheric Administration, the USFWS, the CDFW, the SWRCB, and the U.S Forest Service (USFS). Resource topics of agency concern have been and continue to be presented and discussed monthly in a workshop format to discuss all of the southern California HSR System project sections, including the Bakersfield to Palmdale Project Section. Technical reports and the upcoming project section schedules are discussed during these meetings.

The Authority consulted with the USFS, the Pacific Crest Trail Association, and the BLM on several occasions to discuss realignment of the Pacific Crest Trail to satisfy the requirements set forth in Section 4(f) of the Department of Transportation Act of 1966. The USFS and the Pacific Crest Trail Association were involved because they have jurisdiction over the Pacific Crest Trail, and the BLM was involved as an interested party.

The Authority consulted with public transit agencies with facilities within one-half mile of the Bakersfield to Palmdale Project Section, including the Antelope Valley Transit Authority. Table 9-1, provided at the end of this chapter, provides a full list of the various agency meetings.

9.5.6 Section 106 Consultation, National Historic Preservation Act

In compliance with the NHPA, the Authority and FRA invited consulting parties (including other federal, state, regional, or local agencies that may have responsibilities for historic properties) to review project historic resource reports and findings.

A letter regarding the project was sent to parties potentially interested in historic architectural resources on September 11, 2015. (Refer to the list of interested parties contacted by letter in Table 3-1 of the *Bakersfield to Palmdale Project Section Section 106 Finding of Effect Report* [Authority 2019c]). One response received from the County of Los Angeles Department of Regional Planning stated that it does not maintain a listing of cultural or historic resources within its jurisdiction in the project vicinity. The Department of Regional Planning recommended contacting the regional information center and offered no other comment. Subsequently, the South Central Coastal Information Center was contacted in March 2015 and April 2016. The Authority has added the County of Los Angeles as a consulting party for the Bakersfield to Palmdale Project Section.

The Authority also met with the State Office of Historic Preservation on March 30, 2016, in Sacramento. The purpose of the meeting was to discuss preliminary findings regarding historic properties, including linear resources and La Paz, in the Bakersfield to Palmdale Project Section.

³ The U.S. Army Corps of Engineers agreed by letter, dated December 30, 2009, to be a cooperating agency under NEPA. The Bureau of Land Management agreed by letter, dated September 25, 2013, to be a cooperating agency under NEPA. The Authority sent a letter dated April 8, 2013, to the Department of Defense, representing the U.S. Air Force, to confirm its status as a cooperating agency. A response letter from the Department of Defense was not received. The Administrative Draft EIR/EIS was also provided for Air Force review but no comments were returned. The Surface Transportation Board, by letter dated May 2, 2013, is also a cooperating agency under NEPA.

Four meetings with representatives of the National Chavez Center took place between March 2013 and March 2017. FRA sent a notification letter to NPS on August 24, 2016, that included a description of the project section undertaking and an invitation to consult with FRA regarding potential impacts on the historic property. Meetings with the National Chavez Center and NPS occurred on December 7 and 16, 2016; March 13, April 18 and 25, and June 5 and 25, 2017; and September 4, 2018. A detailed summary of Section 106 consultation is available in the Section 106 Finding of Effect Report (Authority 2019c) prepared for the proposed Bakersfield to Palmdale Project Section. Table 9-1 lists meetings that have taken place as part of the Section 106 consultation process.

9.5.7 Section 404 Consultation, Clean Water Act

In December 2010, the Authority, FRA, USEPA, and USACE signed an MOU to integrate the NEPA (12 U.S.C. § 4321 et seq.), Clean Water Act (33 U.S.C. § 1251 et seq.), and Rivers and Harbors Act Section 14 (33 U.S.C. § 408) processes for the entire HSR system. The MOU recognized new information and changes in project decisions that must be considered to select alternatives for the project-level EIR/EIS analysis, and established a system of “checkpoints” to guide the process of selecting and analyzing alternatives.

Pursuant to the MOU, on June 26, 2012, the Authority and FRA submitted a purpose and need statement for the Bakersfield to Palmdale Project Section to the USEPA and USACE (Checkpoint A). The USACE agreed with the purpose and need statement on July 25, 2012, and the USEPA agreed on July 20, 2012.

From 2013 to 2016, the Authority and FRA consulted regularly with the USACE throughout the development of the *Bakersfield to Palmdale Project Section Aquatic Resources Delineation Report* (Authority 2016c) (Table 9-1).

Upon completion of the Aquatic Resources Delineation Report, the Authority and FRA requested an Approved Jurisdictional Determination on January 6, 2017, for the Bakersfield to Palmdale Project Section, to formally confirm findings of the delineation report. An Approved Jurisdictional Determination was requested because the USACE had made previous determinations of nonjurisdiction for major receiving waters in the watersheds crossed by the Aquatic Resources Study Area due to the aquatic features being nonnavigable, intrastate isolated waters with no apparent interstate or foreign commerce (33 C.F.R. Part 328.3(a)(3)). The USACE responded on December 11, 2017, with an Approved Jurisdictional Determination confirming the isolation of all waters in the subject study area (Cohen 2017). Because there is no federal jurisdiction over the waters in the Bakersfield to Palmdale Project Section, no additional NEPA/Section 404 coordination was required. Therefore, on June 29, 2017, the Authority sent the USEPA and USACE a Notice of Withdrawal from the NEPA/Section 404/Section 408 MOU for the entire HSR system (Authority and FRA 2017b).

Table 9-1 provides a list of all meetings held as part of the Authority’s Section 404 consultation efforts for the Bakersfield to Palmdale Project Section. Section 9.4.5 of this chapter provides detail on the meeting process.

9.5.8 Section 7 Consultation, Federal Endangered Species Act

When a federal agency takes action subject to the Federal Endangered Species Act, it must comply with Section 7(a)(2) of that act, which describes two duties for a federal action agency: (1) an independent, substantive duty to ensure its proposed actions would not jeopardize the continued existence of an endangered species, and (2) an independent, substantive duty to ensure its proposed actions would not result in the destruction or adverse modification of critical habitat. To meet these duties, the federal agency taking action must use the best available scientific and commercial data to assess the effects of the proposed action, and it must consult with the USFWS and the National Marine Fisheries Service for assistance. Through these formal consultations, federal agencies determine whether a proposed action is likely to jeopardize the continued existence of a listed species and/or result in the destruction or adverse modification of its critical habitat.

On March 1, 2011, FRA designated the Authority as the nonfederal representative for Section 7 consultation for the HSR program.⁴ A Biological Assessment was prepared for the Bakersfield to Palmdale Project Section to initiate formal consultation with USFWS and satisfy all information requirements identified at 50 C.F.R. Part 402.14(c). Consultation with the National Marine Fisheries Service was not initiated because no species or designated or proposed critical habitat under that agency's jurisdiction occurs or has potential to occur in the Bakersfield to Palmdale Project Section.

The Authority informally consulted with the USFWS throughout development of the Biological Assessment and associated technical studies and preparation of this Draft EIR/EIS. Meetings began in April 2015 to discuss the Section 7 consultation approach and project overview, and to determine whether the project may affect listed species or critical habitat. Starting in July 2015, several meetings were held to discuss conservation strategies and the species modeling approach by which impacts on species could be identified and avoided. Discussions included approaches to documenting concurrences during the consultation process for specific species modeling, informal review of species natural history information (listing status, species description, life history attributes, and conservation needs), and No Effect determinations.⁵ Review and discussion of species models, conservation targets, No Effect determinations, and Section 7 schedule and timeline continued regularly through 2016.

Starting in November 2016, preliminary species effects assessments (i.e., examination of potential adverse effects of the proposed project on listed species) were presented to the USFWS for review and feedback prior to incorporation into the Biological Assessment. In February 2017, regional mitigation efforts were presented to the USFWS for feedback on mitigation lands acquisition. In June 2017, the Authority presented an overview of the B-P Build Alternatives and their alignments so the agencies could review potential impacts on listed species. In August 2018, the Authority presented Alternative 2 with the CCM Design Option for the same purpose. In December 2018, the Authority submitted a Draft Biological Assessment to the USFWS for review and input. Table 9-1 lists the meetings with USFWS that have occurred as part of the Section 7 consultation process.

9.6 Notification and Circulation of the Draft EIR/EIS

In January 2020, public notice regarding the availability and circulation of this Draft EIR/EIS was provided pursuant to CEQA and NEPA requirements, and text of the public notice was prepared in English and Spanish. Notice included publication of an advertisement in newspapers with general circulation in areas potentially affected by the proposed project. The Draft EIR/EIS public comment period was advertised in the following newspapers:

- *Antelope Valley Press*
- *Antelope Valley Times*
- *Bakersfield.com*
- *The Bakersfield Californian*
- *El Popular* (Spanish)
- *La Gaceta* (Spanish)
- *Rosamond News*
- *Tehachapi News*
- *The Loop Newspaper*

⁴ A federal agency can designate a nonfederal representative (a person, agency, or organization) to conduct informal consultation or prepare a Biological Assessment. The nonfederal representative is designated by written notice to the director. If a permit or license applicant is involved and that entity is not the designated nonfederal representative, then the applicant and the federal agency must agree on the choice of the designated nonfederal representative (50 C.F.R. Parts and 402.08).

⁵ No Effect determinations were made for federally listed, proposed, and candidate species that would not be affected by the proposed project due to a lack of suitable habitat, local or regional extirpations, and/or because the project falls outside the species' known and extant geographic range.

The advertisement indicated that the Bakersfield to Palmdale Project Section Draft EIR/EIS was available on the Authority’s website for review. It also noted the times and locations of workshops and public hearings, as well as the period during which public comments would be received. A letter, informational brochure, fact sheet, and Notice of Availability were provided in English and Spanish. These were distributed by direct mail to members of the public who subscribed to the property mailing list, had attended project events (scoping, public meetings, etc.), or had sent comments or questions via email or on the Authority’s website. In addition, notice was sent to persons who own or live on properties as follows:

- In unincorporated areas, within 1,000 feet of the four B-P Build Alternatives’ footprints and the CCNM Design Option
- In incorporated areas, within 300 feet of the four B-P Build Alternatives’ and F-B LGA between the intersection of 34th Street and L Street and Oswell Street footprints
- Within 1,200 feet of the HSR station footprint(s)

A postcard in English and Spanish was mailed to additional stakeholders who had indicated interest in the project and requested that they be kept informed. A Notice of Completion indicating the availability of the Bakersfield to Palmdale Project Section Draft EIR/EIS was filed with the State Clearinghouse, and copies were sent to state agencies. Several dozen notices were displayed at businesses, public gathering places (e.g., post offices, Amtrak stations, local libraries, and community centers), and the offices of city and county elected officials in the communities surrounding the project section alternative alignments.

Printed or electronic copies of the Bakersfield to Palmdale Project Section Draft EIR/EIS were sent to federal, state, and local agencies; regional transportation agencies; and other organizations and persons who had expressed an interest in the project. The Draft EIR/EIS and appendices are available on the Authority’s website (www.hsr.ca.gov/). Electronic copies of these documents are available upon request at no cost at the Authority’s main office (700 L Street, Suite 620, Sacramento, California 95814) and Southern California regional office (355 S Grand Avenue, Suite 2050, Los Angeles, California 90071), by mail, or at: www.hsr.ca.gov/Programs/Statewide_Rail_Modernization/Project_Sections/bakersfield_palmdale.html. Printed and electronic copies of the Draft EIR/EIS are available at public libraries, the Authority’s offices, and county clerk offices. For information on how to access and review technical reports, please refer to the Authority’s website at www.hsr.ca.gov. Public hearing dates and locations are posted on the Authority’s website. Chapter 10, EIR/EIS Distribution, provides a full distribution list for the Draft EIR/EIS.

Table 9-1 Summary of Bakersfield to Palmdale Project Section Key Stakeholder Outreach Meetings

Date	Meetings Held from April 2009 to January 2020	Topic	Category ¹
April 22, 2009	California Transportation Commission Town Hall Meeting, Bakersfield	Proposed Bakersfield to Palmdale Project Section alignment alternatives and project updates	B
May 6–7, 2009	Great Valley Center Conference	Proposed Bakersfield to Palmdale Project Section alignment alternatives (activity center)	P
May 14, 2009	Bakersfield Technical Advisory Group	Proposed Bakersfield to Palmdale Project Section alignment alternatives	TAG
May 20, 2009	Tulare Rotary Club Breakfast Meeting	Proposed Bakersfield to Palmdale Project Section alignment alternatives	S
May 21, 2009	Caltrans Central Region, Fresno	Proposed Bakersfield to Palmdale Project Section alignment alternatives	AS

Date	Meetings Held from April 2009 to January 2020	Topic	Category ¹
May 26, 2009	North County Transportation Coalition, Palmdale	Proposed Bakersfield to Palmdale Project Section alignment alternatives	S
May 26, 2009	On-Air Interview with Time Warner for SoCal News Evening Broadcast, Time Warner Studio, Palmdale	Proposed Bakersfield to Palmdale Project Section alignment alternatives	P
May 26, 2009	Antelope Valley Board of Trade	Proposed Bakersfield to Palmdale Project Section alignment alternatives and potential impacts	S
May 26, 2009	Antelope Valley News Press Interview	Proposed Bakersfield to Palmdale Project Section alignment alternatives and potential impacts	P
May 26, 2009	Antelope Valley Board of Trade, Transportation Committee	Proposed Bakersfield to Palmdale Project Section alignment alternatives and potential impacts	S
May 27, 2009	Caltrans Environmental Planning Summit, Fresno	Proposed Bakersfield to Palmdale Project Section alignment alternatives and potential impacts	AS
June 4, 2009	Lancaster Sunrise Rotary Club Meeting	Proposed Bakersfield to Palmdale Project Section alignment alternatives and potential impacts	P
June 5, 2009	IDEAL Seminar on Transportation, Los Angeles County/Kern County	Proposed Bakersfield to Palmdale Project Section alignment alternatives (activity center)	P
June 8, 2009	Bakersfield–Kern County Alternatives Review	Proposed Bakersfield to Palmdale Project Section alignment alternatives	AS
June 13, 2009	PBS Interview with Gene Tackett	Proposed Bakersfield to Palmdale Project Section alignment alternatives	P
June 16, 2009	Bakersfield Technical Advisory Group	Proposed Bakersfield to Palmdale Project Section alignment alternatives	TAG
June 24, 2009	Fresno Mayor Ashley Swearingin	Bakersfield to Palmdale Project Section updates	B
June 26, 2009	San Joaquin Valley Regional Policy Council	Bakersfield to Palmdale Project Section updates	S
July 1, 2009	Fresno–Bakersfield Technical Advisory Group	Bakersfield to Palmdale Project Section updates	TAG
July 24, 2009	Tehachapi Scoping Call (email and phone call)	Bakersfield to Palmdale Project Section updates and work in Tehachapi	AS
July 16, 2009	Bakersfield Technical Advisory Group	Bakersfield to Palmdale Project Section updates and potential impacts in Bakersfield	TAG
July 28, 2009	Fresno Mayor Ashley Swearingin	Bakersfield to Palmdale Project Section updates	B
July 29, 2009	Statewide Agency Group Meeting	Statewide HSR Project	AS
July 30, 2009	Office of State Senator George Runner	Bakersfield to Palmdale Project Section updates	B
August 4, 2009	Office of Assemblyman Steve Knight	Bakersfield to Palmdale Project Section updates	B
August 10, 2009	Palmdale Mayor Jim Ledford	Bakersfield to Palmdale Project Section updates	B

Date	Meetings Held from April 2009 to January 2020	Topic	Category ¹
August 12, 2009	The Nature Conservancy	Bakersfield to Palmdale Project Section updates	S
August 18, 2009	Kern County Supervisor John McQuiston	Bakersfield to Palmdale Project Section updates	B
August 18, 2009	Bakersfield Mayor Harvey Hall	Bakersfield to Palmdale Project Section updates and potential impacts in Bakersfield	B
August 19, 2009	Kern High School District Superintendent Don Carter and Associate Superintendent Dennis Scott	Bakersfield to Palmdale Project Section updates and potential impacts on Kern County school districts	B
August 19, 2009	Kern County Supervisor Mike Maggard	Bakersfield to Palmdale Project Section updates and potential impacts on the supervisor's district	B
August 19, 2009	Bakersfield City Councilmember Harold Hanson	Bakersfield to Palmdale Project Section updates and potential impacts on the councilmember's district	B
August 19, 2009	Kern County Supervisor Ray Watson	Bakersfield to Palmdale Project Section updates and potential impacts on the supervisor's district	B
August 19, 2009	Bakersfield Vice Mayor and Councilmember Zack Scrivner	Bakersfield to Palmdale Project Section updates and potential impacts in Bakersfield and to the supervisor's district	B
August 19, 2009	Bakersfield Councilmember David Couch	Bakersfield to Palmdale Project Section updates and potential impacts on the councilmember's district	B
August 19, 2009	Bakersfield Councilmember Irma Carson	Bakersfield to Palmdale Project Section updates and potential impacts on the councilmember's district	B
August 19, 2009	Kern County Supervisor Don Maben	Bakersfield to Palmdale Project Section updates and potential impacts on the supervisor's district	P
August 20, 2009	Corcoran Rotary Club	Bakersfield to Palmdale Project Section updates	P
August 31, 2009 ²	Mexican American Political Association	Bakersfield to Palmdale Project Section updates	S
September 3, 2009	Leaders of the Hill (meeting of Tehachapi-area leaders)	Bakersfield to Palmdale Project Section updates and potential impacts in Tehachapi	S
September 3, 2009	Lockheed Martin Aeronautics Corporation	Bakersfield to Palmdale Project Section updates	S
September 3, 2009	U.S. Air Force Plant 42	Bakersfield to Palmdale Project Section updates	AS
September 8, 2009	Lancaster Mayor R. Rex Parris and City Manager Mark Bozigian	Bakersfield to Palmdale Project Section updates and potential impacts in Lancaster	B
September 8, 2009	Lancaster Vice Mayor Ron Smith	Bakersfield to Palmdale Project Section updates and potential impacts in Lancaster	B
September 8, 2009	Lancaster Councilmember Sherry Marquez and City Manager Mark Bozigian	Bakersfield to Palmdale Project Section updates and potential impacts in Lancaster	B
September 9, 2009	Palmdale Mayor Jim Ledford	Bakersfield to Palmdale Project Section updates and potential impacts in Palmdale	B

Date	Meetings Held from April 2009 to January 2020	Topic	Category ¹
September 9, 2009	Lancaster Councilmember Ken Mann	Bakersfield to Palmdale Project Section updates and potential impacts in Lancaster	B
September 9, 2009	Time Warner Television Broadcast	Bakersfield to Palmdale Project Section updates	P
September 10, 2009	Community of Rosamond	Bakersfield to Palmdale Project Section updates and potential impacts in Rosamond	AS
September 11, 2009	Edwards Air Force Base Community Council Meeting	Bakersfield to Palmdale Project Section updates	S
September 15, 2009	Air and Waste Management Association Luncheon	Bakersfield to Palmdale Project Section updates	S
September 15, 2009	Scoping Meeting in Bakersfield	Bakersfield to Palmdale Project Section scoping meeting	SM
September 16, 2009	Scoping Meeting in Tehachapi	Bakersfield to Palmdale Project Section scoping meeting	SM
September 17, 2009	Scoping Meeting in Palmdale	Bakersfield to Palmdale Project Section scoping meeting	SM
September 30, 2009	Antelope Valley Transportation Summit Meeting	Bakersfield to Palmdale Project Section updates	S
November 3, 2009	Lancaster City Council Meeting	Bakersfield to Palmdale Project Section updates	B
December 9, 2009	Tehachapi SWG	Bakersfield to Palmdale Project Section updates and potential impacts on Tehachapi	S
December 10, 2009	Lancaster SWG	Bakersfield to Palmdale Project Section updates and potential impacts on Lancaster	S
January 6, 2010	Caltrans	Bakersfield to Palmdale Project Section updates	AS
February 16, 2010	Antelope Valley Republican Women	Bakersfield to Palmdale Project Section updates	B
February 24, 2010	Rosamond Community Services District	Bakersfield to Palmdale Project Section updates and potential impacts in Rosamond	AS
February 24, 2010	City of Lancaster	Bakersfield to Palmdale Project Section updates and potential impacts in Lancaster	AS
April 15, 2010	Edison School District Superintendent Meeting	Bakersfield to Palmdale Project Section updates and potential impacts in Edison School District	B
April 29, 2010	City of Lancaster	Bakersfield to Palmdale Project Section updates and potential impacts in Lancaster	AS
June 1, 2010 ²	Antelope Valley University	Bakersfield to Palmdale Project Section updates	B
June 1, 2010	Antelope Valley Hispanic Chamber of Commerce	Bakersfield to Palmdale Project Section updates	S
June 2, 2010	Sempra, East Kern County Airport District, and Mojave Airport Meeting	Bakersfield to Palmdale Project Section updates	B
September 2, 2010	Authority Board Meeting	Bakersfield to Palmdale Project Section updates	P
October 27, 2010	Bureau of Land Management	Bakersfield to Palmdale Project Section updates	AS
December 13, 2010	Statewide Regulatory Agency Meeting	Bakersfield to Palmdale Project Section updates	AS

Date	Meetings Held from April 2009 to January 2020	Topic	Category ¹
March 3, 2011	City of Tehachapi	Bakersfield to Palmdale Project Section updates and potential impacts in Tehachapi	AS
March 3, 2011	Tejon Ranch/The Nature Conservancy	Bakersfield to Palmdale Project Section updates	S
March 3, 2011	Loop Ranch	Bakersfield to Palmdale Project Section updates and potential impacts on Loop Ranch	B
April 13, 2011	City of Tehachapi	Bakersfield to Palmdale Project Section updates and potential impacts in Tehachapi	AS
April 13, 2011	Edison Agriculture/Water Stakeholders	Bakersfield to Palmdale Project Section updates and potential impacts in Edison	B
April 14, 2011	Kern County Planning Department	Bakersfield to Palmdale Project Section updates and potential impacts in Kern County	AS
April 14, 2011	Edison School District	Bakersfield to Palmdale Project Section updates and potential impacts on Edison School District	AS
April 26, 2011	City of Lancaster	Bakersfield to Palmdale Project Section updates and potential impacts in Lancaster	AS
April 26, 2011	Bureau of Land Management	Bakersfield to Palmdale Project Section updates	AS
April 27, 2011	Rosamond Community Services District	Bakersfield to Palmdale Project Section updates and potential impacts in Rosamond	AS
April 27, 2011	Los Angeles County Supervisor Michael Antonovich	Bakersfield to Palmdale Project Section updates and potential impacts in the supervisor's district	B
April 28, 2011	City of Palmdale Meeting	Bakersfield to Palmdale Project Section updates and potential impacts in Palmdale	AS
April 28, 2011	U.S. Air Force Plant 42	Bakersfield to Palmdale Project Section updates	AS
May 11, 2011	North County Transportation Commission	Proposed Bakersfield to Palmdale Project Section alignment alternatives	S
May 18, 2011	Los Angeles County Supervisor Michael Antonovich	Bakersfield to Palmdale Project Section updates and potential impacts in the supervisor's district	B
June 14, 2011	Los Angeles County Supervisor Michael Antonovich	Bakersfield to Palmdale Project Section updates and potential impacts in the supervisor's district	B
June 22, 2011	Democratic Club of the Antelope Valley	Bakersfield to Palmdale Project Section updates	B
August 9, 2011	Mojave Air and Space Port	Bakersfield to Palmdale Project Section updates and potential impacts in Mojave	B
August 10, 2011	City of Palmdale	Bakersfield to Palmdale Project Section updates and potential impacts in Palmdale	AS
August 10, 2011	Los Angeles County Supervisor Michael Antonovich	Bakersfield to Palmdale Project Section updates and potential impacts in the supervisor's district	B
August 11, 2011	Rosamond Community Services District	Bakersfield to Palmdale Project Section updates and potential impacts in Rosamond	AS
August 11, 2011	City of Lancaster	Bakersfield to Palmdale Project Section updates and potential impacts in Lancaster	AS
August 23, 2011	Kern County Planning Department	Bakersfield to Palmdale Project Section updates and potential impacts in Kern	AS

Date	Meetings Held from April 2009 to January 2020	Topic	Category ¹
August 24, 2011	City of Tehachapi	Bakersfield to Palmdale Project Section updates and potential impacts in Tehachapi	AS
October 11, 2011	Los Angeles Department of Water and Power	Bakersfield to Palmdale Project Section updates	AS
October 11, 2011	University of Antelope Valley	Bakersfield to Palmdale Project Section updates	B
October 12, 2011	Sempra Energy	Bakersfield to Palmdale Project Section updates	B
October 12, 2011	Southern California Edison	Bakersfield to Palmdale Project Section updates	B
October 12, 2011	U.S. Air Force Plant 42	Bakersfield to Palmdale Project Section updates	AS
January 5, 2012	Tehachapi Mountain Democratic Club	Bakersfield to Palmdale Project Section updates	B
February 2, 2012	Authority Board Meeting	Bakersfield to Palmdale Project Section updates	P
March 21, 2012	Rosamond Community Services District	Bakersfield to Palmdale Project Section updates and potential impacts in Rosamond	AS
March 22, 2012	City of Lancaster	Bakersfield to Palmdale Project Section updates and potential impacts in Lancaster	AS
March 22, 2012	U.S. Air Force Plant 42	Bakersfield to Palmdale Project Section updates	AS
April 19, 2012	Greater Antelope Valley Economic Alliance	Bakersfield to Palmdale Project Section updates	S
May 9, 2012	Greater Antelope Valley Association of Realtors	Bakersfield to Palmdale Project Section updates	S
May 15, 2012	Kern County Farm Bureau	Bakersfield to Palmdale Project Section updates and potential impacts on agricultural lands in Kern County	S
May 16, 2012	City of Tehachapi	Bakersfield to Palmdale Project Section updates and potential impacts in Lancaster	AS
June 19, 2012	Metrolink	Bakersfield to Palmdale Project Section updates	AS
June 26, 2012	Sempra	Bakersfield to Palmdale Project Section updates	S
June 26, 2012	U.S. Air Force Plant 42	Bakersfield to Palmdale Project Section updates	AS
June 27, 2012	Southern California Edison	Bakersfield to Palmdale Project Section updates	S
June 28, 2012	Los Angeles Department of Water and Power	Bakersfield to Palmdale Project Section updates	S
August 23, 2012	Rosamond Community Services District/Municipal Advisory Council	Bakersfield to Palmdale Project Section updates and potential impacts in Rosamond	S
August 23, 2012	Kern Wind Energy Association	Bakersfield to Palmdale Project Section updates	S
August 23, 2012	City of Lancaster	Bakersfield to Palmdale Project Section updates and potential impacts in Lancaster	AS
August 28, 2012	Los Angeles County Supervisor Mike Antonovich	Bakersfield to Palmdale Project Section updates and potential impacts in the supervisor's district	B
August 28, 2012	Los Angeles County Sanitation Districts	Bakersfield to Palmdale Project Section updates	AS
October 9, 2012	U.S. Air Force Plant 42	Bakersfield to Palmdale Project Section updates	AS

Date	Meetings Held from April 2009 to January 2020	Topic	Category ¹
October 10, 2012	Rosamond Community Services District	Bakersfield to Palmdale Project Section updates and potential impacts in Rosamond	AS
October 10, 2012	City of Lancaster	Bakersfield to Palmdale Project Section updates and potential impacts in Lancaster	AS
October 11, 2012	City of Palmdale	Bakersfield to Palmdale Project Section updates and potential impacts in Palmdale	AS
January 8, 2013	City of Palmdale	Bakersfield to Palmdale Project Section updates and potential impacts in Palmdale	AS
January 9, 2013	Antelope Valley Transportation Summit	Bakersfield to Palmdale Project Section updates	P
January 14, 2013	Los Angeles County Supervisor Mike Antonovich	Bakersfield to Palmdale Project Section updates and potential impacts in the supervisor's district	B
January 15, 2013	City of Lancaster	Bakersfield to Palmdale Project Section updates and potential impacts in Lancaster	AS
January 15, 2013	City of Palmdale	Bakersfield to Palmdale Project Section updates and potential impacts in Palmdale	AS
January 30, 2013	Kern County Planning Department	Bakersfield to Palmdale Project Section updates and potential impacts in Kern County	AS
January 30, 2013	Kern County Roads Department	Bakersfield to Palmdale Project Section updates and potential impacts in Kern County	AS
January 30, 2013	Kern County Farm Bureau	Bakersfield to Palmdale Project Section updates and potential impacts on agricultural lands in Kern County	S
January 31, 2013	City of Tehachapi	Bakersfield to Palmdale Project Section updates and potential impacts in Tehachapi	AS
January 31, 2013	Lehigh Southwest Cement Plant	Bakersfield to Palmdale Project Section updates and potential impacts on the cement plant	B
February 6, 2013	University of Antelope Valley	Bakersfield to Palmdale Project Section updates and potential impacts on the University of Antelope Valley	B
February 6, 2013	U.S. Air Force Plant 42	Bakersfield to Palmdale Project Section updates	AS
February 19, 2013	USACE	Bakersfield to Palmdale Project Section updates	AS
March 6, 2013	National Chavez Center	Bakersfield to Palmdale Project Section updates	AS
March 6, 2013	Loop Ranch	Bakersfield to Palmdale Project Section updates and potential impacts on Loop Ranch	S
March 6, 2013	Tejon Ranch	Bakersfield to Palmdale Project Section updates and potential impacts on Tejon Ranch	S
March 7, 2013	Edison Agricultural Businesses	Bakersfield to Palmdale Project Section updates	S
March 7, 2013	Edison Middle School	Bakersfield to Palmdale Project Section updates and potential impacts in Edison	S
March 14, 2013	Kern County Planning and Community Development	Bakersfield to Palmdale Project Section updates	AS
March 14, 2013	City of Tehachapi	Bakersfield to Palmdale Project Section updates and potential impacts in Tehachapi	AS

Date	Meetings Held from April 2009 to January 2020	Topic	Category ¹
April 10, 2013	Willow Springs Raceway	Bakersfield to Palmdale Project Section updates and potential impacts on the raceway	B
April 10, 2013	Bureau of Land Management	Bakersfield to Palmdale Project Section updates	AS
April 11, 2013	Community of Rosamond Community Services District	Bakersfield to Palmdale Project Section updates and potential impacts in Rosamond	AS
April 11, 2013	Cummings Ranch	Bakersfield to Palmdale Project Section updates and potential impacts on Cummings Ranch	B
April 17, 2013	Antelope Valley Transportation Summit	Bakersfield to Palmdale Project Section updates	P
May 6, 2013	Union Pacific Railroad	Bakersfield to Palmdale Project Section updates	S
May 14, 2013	City of Lancaster	Bakersfield to Palmdale Project Section updates and potential impacts in Lancaster	AS
May 14, 2013	Los Angeles Supervisor Michael Antonovich (Norm Hickling)	Bakersfield to Palmdale Project Section updates and potential impacts in the supervisor's district	B
August 21, 2013	Los Angeles County Sanitation Districts	Bakersfield to Palmdale Project Section updates	AS
September 11, 2013	Palmdale Water District	Bakersfield to Palmdale Project Section updates and potential impacts in Palmdale	AS
September 24, 2013	Antelope Valley Board of Trade Monthly Luncheon	Bakersfield to Palmdale Project Section updates	S
October 2, 2013	Antelope Valley Transportation Summit	Bakersfield to Palmdale Project Section updates	P
October 2, 2013	Caltrans District 6	Bakersfield to Palmdale Project Section updates	AS
October 17, 2013	Kern County Fire Department	Bakersfield to Palmdale Project Section updates and potential impacts in Kern County	AS
November 3, 2015	CDFW	Bakersfield to Palmdale Project Section updates	AS
November 14, 2013	Antelope Valley Board of Trade Transportation Committee Meeting	Bakersfield to Palmdale Project Section updates	S
November 19, 2013	American Public Works Association, Antelope Valley Chapter	Bakersfield to Palmdale Project Section updates	S
January 13, 2014	City of Lancaster	Bakersfield to Palmdale Project Section updates and potential impacts in Lancaster	AS
January 22, 2014	North County Transportation Commission	Bakersfield to Palmdale Project Section updates and potential impacts in north Los Angeles County	B
January 29, 2014	City of Lancaster	Bakersfield to Palmdale Project Section updates and potential impacts in Lancaster	AS
January 29, 2014	City of Palmdale	Bakersfield to Palmdale Project Section updates and potential impacts in Palmdale	AS
April 16, 2014	City of Palmdale	Bakersfield to Palmdale Project Section updates and potential impacts in Palmdale	AS

Date	Meetings Held from April 2009 to January 2020	Topic	Category ¹
April 16, 2014	City of Lancaster	Bakersfield to Palmdale Project Section updates and potential impacts in Lancaster	AS
April 16, 2014	Office of Assemblymember Steve Fox Briefing	Bakersfield to Palmdale Project Section updates and potential impacts in the assembly member's district	B
April 23, 2014	Antelope Valley Transportation Summit	Bakersfield to Palmdale Project Section updates	P
April 23, 2014	High Desert Corridor/Xwest/Antelope Valley Transit Authority	Bakersfield to Palmdale Project Section updates	AS
May 27, 2014	Steve Perez, Rosamond Community Services District	Bakersfield to Palmdale Project Section updates and potential impacts in Rosamond	AS
May 27, 2014	Antelope Valley Board of Trade Transportation Committee	Bakersfield to Palmdale Project Section updates	S
May 29, 2014	U.S. Air Force Plant 42	Bakersfield to Palmdale Project Section updates	AS
June 19, 2014	California Public Agencies Procurement Summit	Bakersfield to Palmdale Project Section updates	P
July 9, 2014	Antelope Valley Transportation Summit	Bakersfield to Palmdale Project Section updates	P
July 9, 2014	Office of Senator Steve Knight	Bakersfield to Palmdale Project Section updates and potential impacts in north Los Angeles County	B
July 14, 2014	City of Palmdale	Bakersfield to Palmdale Project Section updates and potential impacts in Palmdale	AS
July 23, 2014	Antelope Valley Democratic Club	Bakersfield to Palmdale Project Section updates	S
July 28, 2014	Kern County Farm Bureau	Discussion on HSR project section updates and potential impacts on agricultural lands in Kern County	S
July 28, 2014	Kern County Separation Grade District/Kern Council of Governments	Bakersfield to Palmdale Project Section updates	AS
July 28, 2014	Kern Transportation Foundation	Bakersfield to Palmdale Project Section updates	S
July 28, 2014	Office of Kern County Supervisor Zack Scrivner	Bakersfield to Palmdale Project Section updates and potential impacts on the supervisor's district	B
July 28, 2014	Kern County Planning and Community Development Department	Bakersfield to Palmdale Project Section updates	AS
August 22, 2014 ²	California Black Chamber of Commerce Business and Economic Summit	Bakersfield to Palmdale Project Section updates	S
August 27, 2014	North County Transportation Coalition	Bakersfield to Palmdale Project Section updates and potential impacts in north Los Angeles County	S

Date	Meetings Held from April 2009 to January 2020	Topic	Category ¹
August 28, 2014	Office of Kern County Supervisor Leticia Perez	Bakersfield to Palmdale Project Section updates and potential impacts on the supervisor's district	B
September 5, 2014	Mobility 21 Summit	Bakersfield to Palmdale Project Section updates	P
September 16, 2014	Authority Board Meeting	Bakersfield to Palmdale Project Section updates	P
September 17, 2014	Los Angeles County Economic Development Corporation SoCal Jobs Defense Council	Bakersfield to Palmdale Project Section updates	S
October 3, 2014 ²	Regional Hispanic Chamber of Commerce—Southern California Business Development Conference	Bakersfield to Palmdale Project Section updates	S
October 6-7, 2014	Los Angeles Cleantech Incubator Cleantech Global Showcase 2014	Bakersfield to Palmdale Project Section updates	S
October 9, 2014	The Women's and Girls' Fund Reception	Bakersfield to Palmdale Project Section updates	S
October 10, 2014	Greater Bakersfield Chamber of Commerce	Bakersfield to Palmdale Project Section updates	S
October 10, 2014	California State University, Bakersfield	Bakersfield to Palmdale Project Section updates	S
October 10, 2014	Office of Kern County Supervisor Mike Maggard	Bakersfield to Palmdale Project Section updates and potential impacts in the supervisor's district	B
October 11, 2014	Neighborhood Sustainability Symposium	Bakersfield to Palmdale Project Section updates	P
October 15, 2014	City of Palmdale	Bakersfield to Palmdale Project Section updates and potential impacts in Palmdale	AS
October 15, 2014	City of Lancaster	Bakersfield to Palmdale Project Section updates and potential impacts in Lancaster	AS
October 23, 2014	Successful Women in Business Leadership and Procurement Conference	Bakersfield to Palmdale Project Section updates	B
October 23, 2014	Orange County Transportation Authority Business Expo	Bakersfield to Palmdale Project Section updates (activity center)	S
October 29, 2014	Antelope Valley Transportation Summit	Bakersfield to Palmdale Project Section updates	P
December 2, 2014	High-Speed Rail Conference	Bakersfield to Palmdale Project Section updates	P
December 12, 2014 ²	Antelope Valley African American Chamber of Commerce	Bakersfield to Palmdale Project Section updates	S
December 13, 2014	Anaheim Regional Transportation Intermodal Center Station Grand Opening	Bakersfield to Palmdale Project Section updates (activity center)	S
January 14, 2015	Antelope Valley Transportation Summit	Bakersfield to Palmdale Project Section updates	P

Date	Meetings Held from April 2009 to January 2020	Topic	Category ¹
February 24, 2015	CalPortland Company	Bakersfield to Palmdale Project Section updates and potential impacts on CalPortland property	S
February 27, 2015	Antelope Valley 2015 Business Outlook Conference	Bakersfield to Palmdale Project Section updates	P
March 4, 2015	Greater Tehachapi Economic Development Council	Bakersfield to Palmdale Project Section updates	S
March 4, 2015	City of Tehachapi	Bakersfield to Palmdale Project Section updates and potential impacts in Tehachapi	AS
March 4, 2015	Cummings Ranch	Bakersfield to Palmdale Project Section updates and potential impacts on Cummings Ranch	S
March 5, 2015	National Chavez Center	Bakersfield to Palmdale Project Section updates and potential impacts on La Paz	S
March 12, 2015	Tejon Ranch	Bakersfield to Palmdale Project Section updates and potential impacts on Tejon Ranch	S
March 12, 2015	Kern County Farm Bureau	Bakersfield to Palmdale Project Section updates and potential impacts on agricultural lands in Kern County	S
March 12, 2015	Edison Elementary School District	Bakersfield to Palmdale Project Section updates	S
March 12, 2015	Kern County Planning and Community Development	Bakersfield to Palmdale Project Section updates and potential impacts in Kern County	AS
April 7, 2015 ²	Building Ladders of Opportunity—A Pathway to Transportation	Bakersfield to Palmdale Project Section updates	P
April 13, 2015	Rosamond Community Services District	Bakersfield to Palmdale Project Section updates and potential impacts in Rosamond	AS
April 18–19, 2015	California Poppy Festival	Bakersfield to Palmdale Project Section updates (activity center)	P
April 22, 2015	City of Tehachapi	Bakersfield to Palmdale Project Section updates and potential impacts in Tehachapi	AS
April 28, 2015	USFWS and Strategic Growth Council	Regional Section 7 consultation approach	AS
May 1–3, 2015	Women Building the Nation Conference	Bakersfield to Palmdale Project Section updates (information booth)	P
May 4, 2015	City of Tehachapi	Bakersfield to Palmdale Project Section updates and potential impacts in Tehachapi	AS
May 6, 2015	Antelope Valley Transportation Summit	Bakersfield to Palmdale Project Section updates (information booth)	P
May 6, 2015	University of Antelope Valley	Bakersfield to Palmdale Project Section updates and potential impacts on the University of Antelope Valley	S
May 6, 2015	City of Lancaster	Bakersfield to Palmdale Project Section updates and potential impacts in Lancaster	AS
May 21, 2015	Women Can Build!	Bakersfield to Palmdale Project Section updates	S

Date	Meetings Held from April 2009 to January 2020	Topic	Category ¹
May 26, 2015	Antelope Valley Board of Trade Monthly Business Luncheon	Bakersfield to Palmdale Project Section updates	S
May 26, 2015	Rosamond Municipal Advisory Council	Bakersfield to Palmdale Project Section updates and potential impacts in Rosamond (meet and greet)	B
May 27–30, 2015	Sustainatopia	Bakersfield to Palmdale Project Section updates (information booth)	P
May 28, 2015	Mojave Chamber of Commerce	Bakersfield to Palmdale Project Section updates	S
June 2, 2015	CalPortland Company	Bakersfield to Palmdale Project Section updates and potential impacts on CalPortland property	S
June 2, 2015	2015 Small Business Awards	Bakersfield to Palmdale Project Section updates (information booth)	P
June 16, 2015	Greater Tehachapi Chamber of Commerce	Bakersfield to Palmdale Project Section updates	S
June 22, 2015	City of Lancaster	Bakersfield to Palmdale Project Section updates and potential impacts in Lancaster	AS
June 24, 2015	University of Antelope Valley	Bakersfield to Palmdale Project Section updates and potential impacts on University of Antelope Valley	S
June 24, 2015	City of Lancaster	Bakersfield to Palmdale Project Section updates and potential impacts in Lancaster	AS
June 24, 2015	CDFW	Bakersfield to Palmdale Project Section updates	AS
July 2, 2015	Tehachapi Area Association of Realtors	Bakersfield to Palmdale Project Section updates	S
July 8, 2015	USFWS	Section 7 consultation approach	AS
July 16, 2015	Rosamond Municipal Advisory Council/Rosamond Chamber of Commerce	Bakersfield to Palmdale Project Section updates and potential impacts in Rosamond	S
July 25, 2015	USFWS	Section 7 consultation approach and project overview	AS
July 29, 2015	USFWS	Draft species list and updated species modeling approach	AS
July 30, 2015	California SWRCB	Bakersfield to Palmdale Project Section updates	AS
July 30, 2015	Kern Wind Energy Association	Bakersfield to Palmdale Project Section updates	S
August 4, 2015	CalPortland Company	Bakersfield to Palmdale Project Section updates and potential impacts on CalPortland	S
August 5, 2015	Antelope Valley Transportation Summit	Bakersfield to Palmdale Project Section updates	P
August 20, 2015	USFWS and Strategic Growth Council	General modeling approach and regional conservation strategies	AS
September 8, 2015	City of Lancaster Mayor R. Rex Parris	Bakersfield to Palmdale Project Section updates and potential impacts in Lancaster	B
September 9, 2015	USFWS and Strategic Growth Council	Project description, species list, and modeling approach	AS

Date	Meetings Held from April 2009 to January 2020	Topic	Category ¹
September 15, 2015	Tehachapi SWG Meeting	Bakersfield to Palmdale Project Section updates and potential impacts in Tehachapi	S
September 15, 2015	Edison SWG Meeting	Bakersfield to Palmdale Project Section updates and potential impacts in Edison	S
September 16, 2015	Rosamond SWG Meeting	Bakersfield to Palmdale Project Section updates and potential impacts in Rosamond	S
September 17, 2015	Lancaster SWG Meeting	Species modeling coordination	S
September 26–27, 2015	Streets of Lancaster	Bakersfield to Palmdale Project Section updates (information booth)	P
September 30, 2015	Edison Community Open House	Bakersfield to Palmdale Project Section presentation (open house)	P
September 30, 2015	USFWS and Strategic Growth Council	Sample models and regional mitigation planning efforts	AS
October 1, 2015	Tehachapi Community Open House	Bakersfield to Palmdale Project Section presentation (open house)	P
October 5, 2015	Mojave Community Open House	Bakersfield to Palmdale Project Section presentation (open house)	P
October 6, 2015	Brookfield Renewable Energy	Bakersfield to Palmdale Project Section updates	S
October 6, 2015	Rosamond Community Open House	Bakersfield to Palmdale Project Section presentation (open house)	P
October 7, 2015	Lancaster Community Open House	Bakersfield to Palmdale Project Section presentation (open house)	P
October 20, 2015	USFWS	Discuss regional consultation process and updated species list	AS
November 2, 2015	Presentation to Lancaster High School Science, Technology, Engineering, and Math Students	Bakersfield to Palmdale Project Section updates	P
November 3, 2015	Windland, Inc.	Bakersfield to Palmdale Project Section updates	S
November 3, 2015	USEPA	Bakersfield to Palmdale Project Section updates	AS
November 3, 2015	CDFW	Bakersfield to Palmdale Project Section updates	AS
November 4, 2015	Antelope Valley Transportation Summit	Information booth on HSR project section updates	P
November 5, 2015	Tribal Information Meeting	Bakersfield to Palmdale Project Section updates	S
November 10, 2015	USFWS and CDFW	Discuss species list	AS
November 10, 2015	USFWS, USFS, and CDFW	Discuss species modeling approach	AS
November 10, 2015	City of Tehachapi Traffic Analysis Kickoff Conference Call	Bakersfield to Palmdale Project Section updates and potential impacts in Tehachapi	AS
November 10, 2015	Kern County Traffic Analysis Kickoff Conference Call	Bakersfield to Palmdale Project Section updates and potential impacts in Kern County	AS
November 10, 2015	City of Bakersfield Traffic Analysis Kickoff Conference Call	Bakersfield to Palmdale Project Section updates and potential impacts in Bakersfield	AS

Date	Meetings Held from April 2009 to January 2020	Topic	Category ¹
November 12, 2015	City of Lancaster Traffic Analysis Kickoff Conference Call	Bakersfield to Palmdale Project Section updates and potential impacts in Lancaster	AS
November 17, 2015	USFWS, USFS, and CDFW	Demonstration of Data Basin software and discussion of draft maps and models for species	AS
November 24, 2015	NRG Renew, LLC	Bakersfield to Palmdale Project Section updates	S
December 3, 2015	Valley Small Business and Construction Report Business, Transportation and Construction Expo	Information booth on HSR project section updates	P
December 4, 2015	USFWS and CDFW	Discuss draft maps and models for species	AS
December 9, 2015	Smart Growth-Tehachapi Valley	Discussion on HSR project section updates	S
December 10, 2015	USFWS and Strategic Growth Council	Discuss status of consultation process	AS
December 15, 2015	USFWS, CDFW, and USFS	Discuss draft maps and models for species	AS
January 12, 2016	Back Country Horsemen, Antelope Valley Chapter	Bakersfield to Palmdale Project Section updates	B
January 13, 2016	USFWS, CDFW, and USFS	Discuss draft maps and models for species	AS
January 21, 2016	USFWS, Federal Railroad Administration, and Strategic Growth Council	Discuss species modeling effort and regional mitigation approach, and draft proposed Southern California Section 7 timeline	AS
January 27, 2016	USFWS, CDFW, and USFS	Discuss draft maps and models for species	AS
February 10, 2016	USFWS, CDFW, and USFS	Review revised species models	AS
February 11, 2016	USFWS, CDFW, and USFS	Review of species modeling effort and project description	AS
February 23, 2016	Kern County Farm Bureau	Bakersfield to Palmdale Project Section updates and potential impacts on agricultural lands in Kern County	S
February 23, 2016	Tejon Ranch and Tejon Ranch Conservancy	Bakersfield to Palmdale Project Section updates and potential impacts on Tejon Ranch property	S
February 23, 2016	City of Tehachapi	Bakersfield to Palmdale Project Section updates and potential impacts on Tehachapi	AS
February 26, 2016	44th Annual Antelope Valley Business Outlook Conference	Information booth for Bakersfield to Palmdale Project Section updates	P
March 3, 2016	USFWS	Review draft detailed Section 7 schedule and discuss plant species models and limited plant surveys	AS
March 8, 2016	Lancaster Vice Mayor Marvin Crist	Bakersfield to Palmdale Project Section updates and potential impacts in Lancaster	B
March 9, 2016	USFWS, CDFW, and USFS	Discussion on species models	AS
March 15, 2016	Stakeholder Meeting with Property Owner Jenny Hannah	Bakersfield to Palmdale Project Section updates and potential impacts on stakeholder	S

Date	Meetings Held from April 2009 to January 2020	Topic	Category ¹
March 22, 2016	Office of Kern County Supervisor Zack Scrivner	Bakersfield to Palmdale Project Section updates and potential impacts on the supervisor's district	B
March 22, 2016	Office of Kern County Supervisor Leticia Perez	Bakersfield to Palmdale Project Section updates and potential impacts on the supervisor's district	B
March 22, 2016	Edison SWG Meeting	Bakersfield to Palmdale Project Section updates	S
March 22, 2016	Crossing (Tehachapi) SWG Meeting	Bakersfield to Palmdale Project Section updates	S
March 23, 2016	USFWS, CDFW, and USFS	Revised species models and revised Bakersfield to Palmdale Project Section alignment alternatives	AS
March 24, 2016	USFWS	Bakersfield to Palmdale Project Section alignment alternatives, plant and vernal pool surveys, and species modeling and regional mitigation efforts	AS
March 24, 2016	North Antelope Valley (Rosamond) SWG Meeting	Bakersfield to Palmdale Project Section updates	S
March 24, 2016	Lancaster SWG Meeting	Bakersfield to Palmdale Project Section updates and potential impacts in Lancaster	S
March 30, 2016	State Office of Historic Preservation	Bakersfield to Palmdale Project Section updates	AS
April 6, 2016	USFWS, CDFW, and USFS	Model for California red-legged frog	AS
April 12, 2016	Authority Board Meeting	Bakersfield to Palmdale Project Section updates	P
April 14, 2016	USFWS	Section 7 revised draft detailed schedule and species modeling process	AS
April 18, 2016	CDFW	Bakersfield to Palmdale Project Section updates	AS
April 16–17, 2016 ²	California Poppy Festival	Bakersfield to Palmdale Project Section updates	P
April 21, 2016	USFWS	Species modeling approach and review of species models	AS
April 25, 2016	USFWS	Bakersfield to Palmdale Project Section and species modeling approach, review of species models	AS
April 26, 2016	USFWS and USFS	Species modeling approach and review of species models	AS
May 3, 2016	Stakeholder Meeting with Property Owner Jenny Hannah	Bakersfield to Palmdale Project Section updates and potential impacts on stakeholder	S
May 3, 2016	Giumarra Vineyards Corporation	Bakersfield to Palmdale Project Section updates and potential impacts on Giumarra property	S
May 5, 2016	USFWS	Bakersfield to Palmdale Project Section alignment alternatives	AS
May 6, 2016	2016 Southern California Association of Governments Regional Conference and General Assembly	Bakersfield to Palmdale Project Section updates	P
May 12, 2016	CalPortland Company	Bakersfield to Palmdale Project Section updates and potential impacts on CalPortland property	S

Date	Meetings Held from April 2009 to January 2020	Topic	Category ¹
May 13, 2016	San Joaquin Valley Contracting Procurement and Transportation Conference 2016	Information booth for HSR project section updates	P
May 19, 2016	Kern County Roads Department	Bakersfield to Palmdale Project Section updates	AS
May 19, 2016	Joint F-B LGA and Bakersfield to Palmdale Project Section Presentation to Kern Council of Governments Transportation Planning Policy Committee	Bakersfield to Palmdale Project Section updates	P
May 23, 2016	CDFW	Species models in Data Basin	AS
May 26, 2016	USFWS	Discuss Data Basin maps and animal preliminary effects assessment	AS
June 16, 2016	USFWS, Strategic Growth Council, and CDFW	Preliminary species model implementation and preliminary effects assessments for species	AS
June 21, 2016	Los Angeles Department of Water and Power	Bakersfield to Palmdale Project Section updates	AS
June 22, 2016	USFWS, CDFW, and USFS	Updated species models	AS
June 28, 2016	Cummings Ranch and Loop Ranch	Bakersfield to Palmdale Project Section updates and potential impacts on ranch lands	S
June 28, 2016	Edison SWG Meeting	Bakersfield to Palmdale Project Section updates	S
June 28, 2016	Crossing (Tehachapi) SWG Meeting	Bakersfield to Palmdale Project Section updates	S
June 29, 2016	North Antelope Valley (Rosamond) SWG Meeting	Bakersfield to Palmdale Project Section updates	S
June 29, 2016	Lancaster SWG Meeting	Bakersfield to Palmdale Project Section updates and potential impacts in Lancaster	S
July 7, 2016	USFWS and Strategic Growth Council	No Effect memoranda for species and on species model revisions	AS
July 11, 2016	USACE, USEPA, and CDFW	Bakersfield to Palmdale Project Section updates	AS
July 11, 2016	Caltrans	Bakersfield to Palmdale Project Section updates	AS
July 13, 2016	Statewide Monthly Regulatory Agency Meetings with USACE, USEPA, USFWS, CDFW, and SWRCB	Bakersfield to Palmdale Project Section updates	AS
July 14, 2016	Caltrans, Tejon Ranch Conservancy, The Nature Conservancy, Los Angeles Regional Planning, and University of California, Davis	Bakersfield to Palmdale Project Section updates	AS, S
July 18, 2016	USACE and California SWRCB	Field visit to review mapped jurisdictional waters	AS
July 19, 2016	Edison Community Open House Meeting	Bakersfield to Palmdale Project Section presentation (open house)	P

Date	Meetings Held from April 2009 to January 2020	Topic	Category ¹
July 20, 2016	Kern County Roads Department	Bakersfield to Palmdale Project Section updates	AS
July 20, 2016	City of Tehachapi Field Visit	Bakersfield to Palmdale Project Section updates and the four alternative routes through the area	AS
July 20, 2016	Tehachapi Community Open House Meeting	Bakersfield to Palmdale Project Section presentation (open house)	P
July 21, 2016	Terra-Gen LLC	Bakersfield to Palmdale Project Section updates	S
July 21, 2016	Lancaster Community Open House Meeting	Bakersfield to Palmdale Project Section presentation (open house)	P
July 26, 2016	Rosamond Community Open House Meeting	Bakersfield to Palmdale Project Section presentation (open house)	P
July 26, 2016	USFWS and CDFW	Bakersfield to Palmdale Project Section updates	AS
July 28, 2016	USFWS and Strategic Growth Council	Bakersfield to Palmdale Project Section updates	AS
August 3, 2016	Greater Tehachapi Economic Development Council	Bakersfield to Palmdale Project Section updates	S
August 5, 2015	Soboba Band of Luiseño Indians	Bakersfield to Palmdale Project Section updates	AS
August 8, 2016	CDFW	Bakersfield to Palmdale Project Section updates	AS
August 10, 2016	Mogul Energy Partners LLC	Bakersfield to Palmdale Project Section updates	B
August 10, 2016	Arvin-Edison Water Storage District	Bakersfield to Palmdale Project Section updates	B
August 10, 2016	Statewide Monthly Regulatory Agency Meetings with USACE, USEPA, USFWS, CDFW, and SWRCB	Bakersfield to Palmdale Project Section updates	AS
August 18, 2016	Bureau of Land Management and Pacific Crest Trail Association	Bakersfield to Palmdale Project Section updates	AS, S
August 29, 2016	CDFW	Bakersfield to Palmdale Project Section updates	AS
August 30, 2016	Anatase Products	Bakersfield to Palmdale Project Section updates	B
August 30, 2016	Benz Sanitation, Inc.	Bakersfield to Palmdale Project Section updates	B
August 30, 2016	Rosamond Community Services District	Bakersfield to Palmdale Project Section updates and potential impacts in Rosamond	B
September 6, 2016	Tejon Ranch	Bakersfield to Palmdale Project Section updates and potential impacts on Tejon Ranch property	B
September 6, 2016	Bolthouse Farms	Bakersfield to Palmdale Project Section updates	B
September 8, 2016	Exotic Feline Breeding Compound's Feline Conservation Center	Bakersfield to Palmdale Project Section updates and potential impacts on the Exotic Feline Breeding Compound	B
September 13, 2016	USFWS and Strategic Growth Council	Methodology modeling effort to date, updated species list, and effects process overview	AS
September 13, 2016	City of Lancaster	Bakersfield to Palmdale Project Section updates and potential impacts in Lancaster	AS

Date	Meetings Held from April 2009 to January 2020	Topic	Category ¹
September 14, 2016	Statewide Monthly Regulatory Agency Meetings with USACE, USEPA, USFWS, CDFW, and SWRCB	Bakersfield to Palmdale Project Section updates	AS
September 20, 2016	Cummings Ranch	Bakersfield to Palmdale Project Section updates and potential impacts on Cummings Ranch	B
September 20, 2016	Edison Elementary School District/Edison Middle School	Bakersfield to Palmdale Project Section updates	AS
September 20, 2016	Stakeholder Meeting of Area Residences	Bakersfield to Palmdale Project Section updates	B
September 22, 2016	U.S. Air Force Plant 42	Bakersfield to Palmdale Project Section updates	AS
September 24, 2016 ²	September Fest (Rosamond)	Bakersfield to Palmdale Project Section updates (information booth)	P
September 27, 2016	Kern County Roads Department	Bakersfield to Palmdale Project Section updates	AS
September 27, 2016	National Chavez Center	Bakersfield to Palmdale Project Section updates	S
October 4, 2016	CDFW and USFWS	Discussion on model status and effects analysis overview schedule	AS
October 6, 2016	Bureau of Land Management	Bakersfield to Palmdale Project Section updates	AS
October 11, 2016	City of Lancaster	Bakersfield to Palmdale Project Section updates and potential impacts in Lancaster	AS
October 12, 2016	Statewide Monthly Regulatory Agency Meetings with USACE, USEPA, USFWS, CDFW, and SWRCB	Bakersfield to Palmdale Project Section updates	AS
October 20, 2016	USFWS and CDFW	Impact avoidance and minimization features and preliminary effects assessments for species	AS
October 21, 2016	USFWS and CDFW	Preliminary effects assessments for state-listed-only species	AS
October 24, 2016	Caltrans Division 6	Bakersfield to Palmdale Project Section updates	AS
October 26, 2016	Bolthouse Farms	Bakersfield to Palmdale Project Section updates	S
November 8, 2016	City of Lancaster	Bakersfield to Palmdale Project Section updates and potential impacts in Lancaster	AS
November 9, 2016	Statewide Monthly Regulatory Agency Meetings with USACE, USEPA, USFWS, CDFW, and SWRCB	Bakersfield to Palmdale Project Section updates	AS
November 10, 2016	USFS, USFWS, and CDFW	Preliminary effects assessments for species	AS
December 1, 2016 ²	Pop-Up Booth at Carnicería Gonzalez (Lancaster)	Bakersfield to Palmdale Project Section updates	P
December 1, 2016	USFWS and CDFW	Preliminary effects assessments for species	AS
December 1, 2016	Tehachapi Rotary Club	Bakersfield to Palmdale Project Section updates	P
December 6, 2016	CalPortland Company	Bakersfield to Palmdale Project Section updates	B
December 7, 2016	USFWS and CDFW	Bakersfield to Palmdale Project Section updates	AS

Date	Meetings Held from April 2009 to January 2020	Topic	Category ¹
December 7, 2016	National Chavez Center and National Park Service	Bakersfield to Palmdale Project Section updates	AS
December 8, 2016 ²	Pop-Up Booth at Walmart Supercenter (Palmdale)	Bakersfield to Palmdale Project Section updates	P
December 8, 2016 ²	Pop-Up Booth at Walmart Neighborhood Market (Palmdale)	Bakersfield to Palmdale Project Section updates	P
December 13, 2016	City of Lancaster	Bakersfield to Palmdale Project Section updates and potential impacts in Lancaster	AS
December 14, 2016	Monthly Regulatory Agency Meetings with USACE, USEPA, USFWS, CDFW, and SWRCB	Bakersfield to Palmdale Project Section updates	AS
December 16, 2016	National Chavez Center and National Park Service	Bakersfield to Palmdale Project Section updates	AS
January 10, 2017	City of Tehachapi	Bakersfield to Palmdale Project Section updates	AS
January 10, 2017	Tehachapi SWG Meeting	Bakersfield to Palmdale Project Section updates	S
January 10, 2017	Edison SWG Meeting	Bakersfield to Palmdale Project Section updates	S
January 11, 2017	Palmdale SWG Meeting	Bakersfield to Palmdale Project Section updates	S
January 12, 2017	North Antelope Valley (Rosamond) SWG Meeting	Bakersfield to Palmdale Project Section updates	S
January 12, 2017	Lancaster SWG Meeting	Bakersfield to Palmdale Project Section updates and potential impacts in Lancaster	S
January 12, 2017	City of Lancaster	Bakersfield to Palmdale Project Section updates and potential impacts in Lancaster	AS
January 12, 2017	USFWS	Update on Biological Assessment schedule and planning of upcoming agency workshops	AS
January 17, 2017 ²	Pop-Up Activity Center Event at Walmart Supercenter (Palmdale)	Bakersfield to Palmdale Project Section updates	P
January 17, 2017 ²	Pop-Up Activity Center Event at Walmart Neighborhood Market (Palmdale)	Bakersfield to Palmdale Project Section updates	P
January 18, 2017 ²	Pop-Up Activity Center Event at K-Mart (Tehachapi)	Bakersfield to Palmdale Project Section updates	P
January 18, 2017 ²	Pop-Up Activity Center Event at Albertson's (Tehachapi)	Bakersfield to Palmdale Project Section updates	P
January 20, 2017	CDFW	Bakersfield to Palmdale Project Section updates	AS
January 24, 2017	Wildlife Connectivity and Regional Mitigation Update Stakeholder Meeting	Bakersfield to Palmdale Project Section updates	S
January 24, 2017 ²	Pop-Up Activity Center Event at Los Amigos Swap Meet (Bakersfield)	Bakersfield to Palmdale Project Section updates	P

Date	Meetings Held from April 2009 to January 2020	Topic	Category ¹
January 24, 2017 ²	Pop-Up Activity Center Event at Walmart Neighborhood Market (Bakersfield)	Bakersfield to Palmdale Project Section updates	P
January 25, 2017 ²	Pop-Up Activity Center Event at Carnicería Gonzalez (Lancaster)	Bakersfield to Palmdale Project Section updates	P
January 25, 2017 ²	Pop-Up Activity Center Event at Walmart Supercenter (Lancaster)	Bakersfield to Palmdale Project Section updates	P
January 25, 2017	Lancaster Open House Meeting	Bakersfield to Palmdale Project Section presentation (open house)	P
January 28, 2017	Rosamond Open House Meeting	Bakersfield to Palmdale Project Section presentation (open house)	P
January 31, 2017	Lancaster Open House Meeting	Bakersfield to Palmdale Project Section presentation (open house)	P
February 1, 2017	Tehachapi Open House Meeting	Bakersfield to Palmdale Project Section presentation (open house)	P
February 1, 2017	U.S. Air Force Plant 42 and Plant 10	Bakersfield to Palmdale Project Section updates	AS
February 2, 2017	USFWS	Regional mitigation efforts	AS
February 2, 2017	Edison Open House Meeting	Bakersfield to Palmdale Project Section presentation (open house)	P
February 2, 2017	Office of Kern County Supervisor Leticia Perez	Bakersfield to Palmdale Project Section updates and potential impacts on the supervisor's district	B
February 2, 2017	Office of Kern County Supervisor Zack Scrivner	Bakersfield to Palmdale Project Section updates and potential impacts on the supervisor's district	B
February 7, 2017	Windswept Ranch	Bakersfield to Palmdale Project Section updates and potential impacts on Windswept Ranch	B
February 7, 2017	Palmdale Open House Meeting	Bakersfield to Palmdale Project Section presentation (open house)	P
February 13, 2017	City of Lancaster	Bakersfield to Palmdale Project Section updates	AS
February 16, 2017	The Boulevard Association	Bakersfield to Palmdale Project Section updates	B
February 25, 2017 ²	Bakersfield Black American History Parade	Bakersfield to Palmdale Project Section updates	P
March 1, 2017	Bureau of Land Management and Los Angeles County Department of Parks and Recreation	Bakersfield to Palmdale Project Section updates	AS
March 1, 2017	Telephone Meeting with NRG Renew, LLC (Alta Wind Energy Center)	Bakersfield to Palmdale Project Section updates	B
March 2, 2017	CDFW	Bakersfield to Palmdale Project Section updates	AS
March 3, 2017 ²	Pop-Up Activity Center Event at Mercado Latino Tianguis (Bakersfield)	Bakersfield to Palmdale Project Section updates	P

Date	Meetings Held from April 2009 to January 2020	Topic	Category ¹
March 8, 2017	Monthly Regulatory Agency Meeting	Bakersfield to Palmdale Project Section updates	AS
March 13, 2017	National Chavez Center, National Park Service, and State Office of Historic Preservation	Bakersfield to Palmdale Project Section updates	AS
March 14, 2017	CDFW	Bakersfield to Palmdale Project Section updates	AS
March 14, 2017	City of Lancaster	Bakersfield to Palmdale Project Section updates and potential impacts in Lancaster	AS
March 16, 2017	Bureau of Land Management and Pacific Crest Trail Association	Bakersfield to Palmdale Project Section updates	AS
March 22, 2017	Plant 10 (Lockheed Martin, Skunkworks)	Bakersfield to Palmdale Project Section updates	B
March 22, 2017	Anatase Products	Bakersfield to Palmdale Project Section updates	B
March 24, 2017	Build Your Dreams America	Bakersfield to Palmdale Project Section updates	B
April 4, 2017	CDFW	Bakersfield to Palmdale Project Section updates	AS
April 11, 2017	City of Lancaster	Bakersfield to Palmdale Project Section updates	AS
April 17, 2017	National Chavez Center and National Park Service	Bakersfield to Palmdale Project Section updates	AS
April 18, 2017	Advisory Council on Historic Preservation and State Office of Historic Preservation	Bakersfield to Palmdale Project Section updates	AS
April 22-23, 2017 ²	Activity Center Event at the California Poppy Festival (Lancaster)	Bakersfield to Palmdale Project Section updates	P
April 25, 2017	National Chavez Center , National Park Service, Advisory Council on Historic Preservation, and State Office of Historic Preservation	Bakersfield to Palmdale Project Section updates	AS
April 27, 2017	USFWS and CDFW	Mitigation parcel database	AS
May 25, 2017	City of Palmdale	Bakersfield to Palmdale Project Section updates	AS
June 1, 2017	USFWS	Bakersfield to Palmdale Project Section overview	AS
June 5, 2017	National Chavez Center National Park Service, Advisory Council on Historic Preservation, and State Office of Historic Preservation	Bakersfield to Palmdale Project Section updates	AS
June 9, 2017 ²	Antelope Valley African American Chamber of Commerce	Bakersfield to Palmdale Project Section updates	S
June 20, 2017 ²	Antelope Valley Hispanic Chamber of Commerce	Bakersfield to Palmdale Project Section updates	S
June 20, 2017	City of Tehachapi	Bakersfield to Palmdale Project Section updates	AS

Date	Meetings Held from April 2009 to January 2020	Topic	Category ¹
July 7, 2017	Environmental Justice Pop-Up Activity Center Event at Mercado Latino (Bakersfield)	Bakersfield to Palmdale Project Section updates	P
August 1, 2017	Tehachapi National Night Out Information Table	Bakersfield to Palmdale Project Section updates	P
August 17, 2017	Rosamond Municipal Advisory Council Board Meeting	Bakersfield to Palmdale Project Section updates	P
August 23, 2017 ²	Antelope Valley Hispanic Chamber of Commerce Spanish Luncheon	Bakersfield to Palmdale Project Section updates	S
August 24, 2017 ²	Kern County Black Chamber of Commerce Small Business Diversity Expo and Trade Show	Bakersfield to Palmdale Project Section updates	P
August 24, 2017	USFS, Bureau of Land Management, and Pacific Crest Trail Association	Bakersfield to Palmdale Project Section updates	AS
September 1, 2017	Tehachapi National Night Out Information Table	Bakersfield to Palmdale Project Section updates	P
September 8, 2017	USFS	Bakersfield to Palmdale Project Section updates	AS
September 17, 2017	Rosamond Municipal Advisory Council Board Meeting	Bakersfield to Palmdale Project Section updates	P
September 23, 2017 ²	Antelope Valley Hispanic Chamber of Commerce Spanish Luncheon	Bakersfield to Palmdale Project Section updates	S
September 24, 2017	USFS, Bureau of Land Management, and Pacific Crest Trail Association	Bakersfield to Palmdale Project Section updates	AS
September 24, 2017 ²	Kern County Black Chamber of Commerce Small Business Diversity Expo and Trade Show	Bakersfield to Palmdale Project Section updates	P
September 28, 2017	Tehachapi Rotary Club	Bakersfield to Palmdale Project Section updates	P
December 12, 2017	U.S. Air Force Plant 42	Bakersfield to Palmdale Project Section updates	AS
June 25, 2018	National Chavez Center, National Park Service, Advisory Council on Historic Preservation, State Office of Historic Preservation, and National Parks Conservation Association	Bakersfield to Palmdale Project Section updates	AS
June 8, 2018	USACE and RWQCB (Bakersfield to Palmdale)	Bakersfield to Palmdale Project Section updates	AS
July 8, 2018	Pacific Crest Trail Association, U.S. Forest Service, and others on the Pacific Crest Trail alignment	Bakersfield to Palmdale Project Section updates	AS

Date	Meetings Held from April	Topic	Category ¹
July 23, 2018	North Los Angeles County Transportation Coalition	Bakersfield to Palmdale Project Section updates	B
August 15, 2018	USFWS, CDFW, FRA, USEPA, National Oceanic and Atmospheric Administration, and National Park Service	Bakersfield to Palmdale Project Section updates	AS
August 22, 2018	Palmdale SWG Meeting	Bakersfield to Palmdale Project Section updates	P
August 28, 2018	Edison SWG Meeting	Bakersfield to Palmdale Project Section updates	S
August 28, 2018	Tehachapi SWG Meeting	Bakersfield to Palmdale Project Section updates	S
August 29, 2018	Rosamond SWG Meeting	Bakersfield to Palmdale Project Section updates	S
August 29, 2018	Lancaster SWG Meeting	Bakersfield to Palmdale Project Section updates	S
August 29, 2018	Palmdale SWG Meeting	Bakersfield to Palmdale Project Section updates	S
September 4, 2018	National Chavez Center and National Park Service	Bakersfield to Palmdale Project Section updates	AS
September 5, 2018	Tehachapi Community Open House Meeting	Bakersfield to Palmdale Project Section presentation (open house)	P
September 10, 2018	Edison Community Open House Meeting	Bakersfield to Palmdale Project Section presentation (open house)	P
September 10, 2018	Kern County Planning Department	Bakersfield to Palmdale Project Section updates	AS
September 10, 2018	Office of Kern County Supervisor Leticia Perez	Bakersfield to Palmdale Project Section updates and potential impacts on the supervisor's district	B
September 12, 2018	Lancaster Community Open House Meeting	Bakersfield to Palmdale Project Section presentation (open house)	P
September 13, 2018	Pacific Crest Trail Association, U.S. Forest Service, and others on the Pacific Crest Trail alignment	Bakersfield to Palmdale Project Section updates	AS
September 26, 2018 ²	Pop-Up Activity Center Event at Albertson's (Tehachapi)	Bakersfield to Palmdale Project Section updates	P
September 27, 2018 ²	Pop-Up Activity Center Event at Carniceria Gonzalez (Lancaster)	Bakersfield to Palmdale Project Section updates	P
September 28, 2018 ²	Pop-Up Activity Center Event at Mercado Latino (Bakersfield)	Bakersfield to Palmdale Project Section updates	P
September 28, 2018 ²	Pop-Up Activity Center Event at Walmart Neighborhood Market (Palmdale)	Bakersfield to Palmdale Project Section updates	P
October 18, 2018	Pacific Crest Trail Association, U.S. Forest Service, and others on the Pacific Crest Trail alignment	Bakersfield to Palmdale Project Section updates	AS
December 11, 2018	CalPortland Company	Bakersfield to Palmdale Project Section updates and potential impacts on CalPortland	S
December 13, 2018	LADWP	Bakersfield to Palmdale Project Section updates	AS

Date	Meetings Held from April 2009 to January 2020	Topic	Category ¹
January 23, 2019	Caltrans District 6	Bakersfield to Palmdale Project Section updates	AS
February 5, 2019	Plant 10 and Northrop Grumman	Bakersfield to Palmdale Project Section updates	S
February 14, 2019	Mogul Energy Partners I, LLC	Bakersfield to Palmdale Project Section updates	S
February 14, 2019	U.S. Air Force Plant 42	Bakersfield to Palmdale Project Section updates	AS
February 15, 2019	CalPortland Company	Bakersfield to Palmdale Project Section updates and potential impacts on CalPortland	S
February 27, 2019	Brookfield Renewable	Bakersfield to Palmdale Project Section updates	AS
February 27, 2019	City of Tehachapi	Bakersfield to Palmdale Project Section updates	AS
March 4, 2019	Pacific Crest Trail Association, U.S. Forest Service, and others on the Pacific Crest Trail alignment	Bakersfield to Palmdale Project Section updates	AS
March 25, 2019	USFWS	Bakersfield to Palmdale Project Section Biological Assessment	AS
April 11, 2019	Kern County Planning	Bakersfield to Palmdale Project Section updates	AS
April 11, 2019	Kern County Public Works	Bakersfield to Palmdale Project Section updates	AS
April 11, 2019	Kern COG	Bakersfield to Palmdale Project Section updates	AS
April 23, 2019	CalPortland Company	Bakersfield to Palmdale Project Section updates	S
May 6, 2019	USFWS	Bakersfield to Palmdale Project Section Biological Assessment	AS
May 13, 2019	USFWS	Bakersfield to Palmdale Project Section Biological Assessment	AS
May 14, 2019	Edison School District	Bakersfield to Palmdale Project Section updates	AS
May 14, 2019	Greater Bakersfield Separation of Grade District	Bakersfield to Palmdale Project Section updates	AS
May 14, 2019	Tejon Ranch	Bakersfield to Palmdale Project Section updates	AS
June 5, 2019	City of Lancaster	Bakersfield to Palmdale Project Section updates	AS
July 11, 2019	National Chavez Center and National Park Service	Bakersfield to Palmdale Project Section updates	AS
July 22, 2019	North Los Angeles County Transportation Coalition	Bakersfield to Palmdale Project Section updates	B
August 15, 2019	City of Tehachapi	Bakersfield to Palmdale Project Section updates	AS
August 28, 2019	National Chavez Center and National Park Service	Bakersfield to Palmdale Project Section updates	AS
October 16, 2019	National Chavez Center, National Park Service, Advisory Council on Historic Preservation, State Office of Historic Preservation, National Trust for Historic Preservation, and National Parks Conservation Association	Bakersfield to Palmdale Project Section updates	AS
October 17, 2019	Cummings Ranch	Bakersfield to Palmdale Project Section updates	S

Date	Meetings Held from April 2009 to January 2020	Topic	Category ¹
October 17, 2019	Mogul Energy	Bakersfield to Palmdale Project Section updates	S
November 5, 2019	City of Lancaster	Bakersfield to Palmdale Project Section updates	AS
November 5, 2019	CalPortland Company	Bakersfield to Palmdale Project Section updates	S
November 14, 2019	Antelope Valley Board of Trade	Bakersfield to Palmdale Project Section updates	S
January 8, 2020	City of Lancaster	Bakersfield to Palmdale Project Section updates	AS
January 8, 2020	City of Tehachapi	Bakersfield to Palmdale Project Section updates	AS
January 8, 2020	Office of Kern County Supervisor Kathryn Barger	Bakersfield to Palmdale Project Section updates and potential impacts in the supervisor's district	B
January 9, 2020	Office of Kern County Supervisor Leticia Perez	Bakersfield to Palmdale Project Section updates and potential impacts in the supervisor's district	B
January 9, 2020	Office of Kern County Supervisor Zack Scrivner	Bakersfield to Palmdale Project Section updates and potential impacts in the supervisor's district	B
January 9, 2020	Office of Kern County Supervisor Mike Maggard	Bakersfield to Palmdale Project Section updates and potential impacts in the supervisor's district	B
January 15, 2020 ²	Pop-Up Activity Center Event at Mercado Latino (Bakersfield)	Bakersfield to Palmdale Project Section updates	P
January 15, 2020 ²	Pop-Up Activity Center Event at Public Library (Rosamond)	Bakersfield to Palmdale Project Section updates	P
January 22, 2020	Bureau of Land Management	Bakersfield to Palmdale Project Section updates	AS

¹ Categories: AS = Agency Staff P = Public Meeting SM = Scoping Meeting
 B = Briefing S = Stakeholder Meeting TAG = Technical Advisory Group

² Environmental justice meeting
 Authority = California High-Speed Rail Authority
 Caltrans = California Department of Transportation
 CDFW = California Department of Fish and Wildlife
 F-B LGA = Fresno to Bakersfield Locally Generated Alternative
 FRA = Federal Railroad Administration
 La Paz = Nuestra Señora Reina de La Paz/César E. Chávez National Monument
 RWQCB = Regional Water Quality Control Board
 SWG = stakeholder working group
 SWRCB = State Water Resources Control Board
 USACE = U.S. Army Corps of Engineers
 USEPA = U.S. Environmental Protection Agency
 USFS = U.S. Forest Service
 USFWS = U.S. Fish and Wildlife Service

This page intentionally left blank