



MILLBRAE-SFO STATION

High-Speed Rail Station Modifications

The Millbrae-SFO Station modifications would be the same under both alternatives. New high-speed rail infrastructure would be built at the existing BART/Caltrain Station, including a new station entrance hall with ticketing and support services. Other station area modifications would include:

- Two new tracks and new high-speed rail platform
- Overhead pedestrian crossing to connect high-speed rail to Caltrain and BART
- Extension of California Drive to Victoria Avenue for station access
- Replacement parking for displaced Caltrain and BART parking
- New signals and pedestrian crossings at Chadbourne Avenue and El Camino Real
- New dedicated bicycle path for westside station access

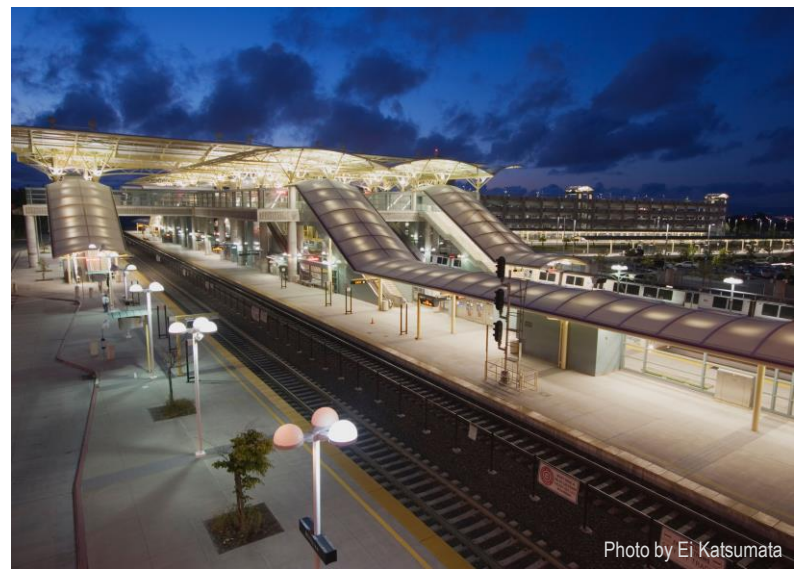
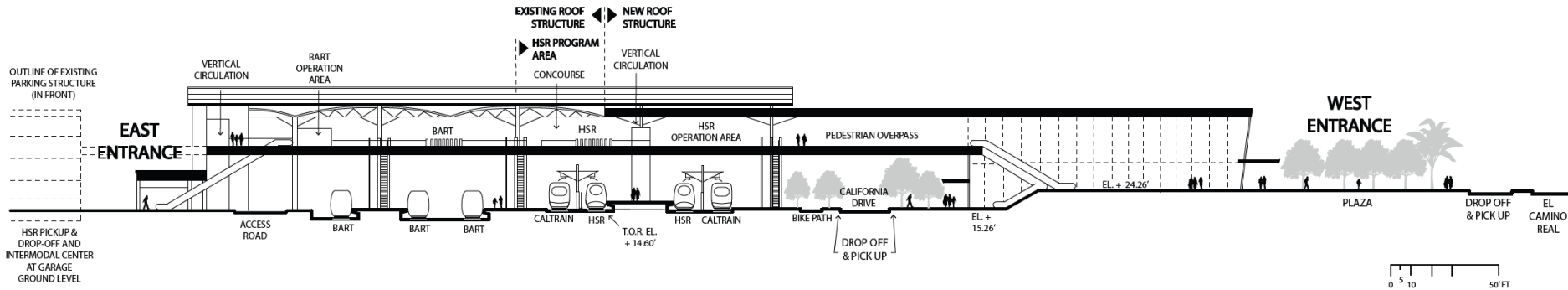


Photo by Ei Katsumata

Station Section



For more information on high-speed rail stations in the San Francisco to San Jose Project Section, see Volume 1, Chapter 2 of the Draft EIR/EIS.